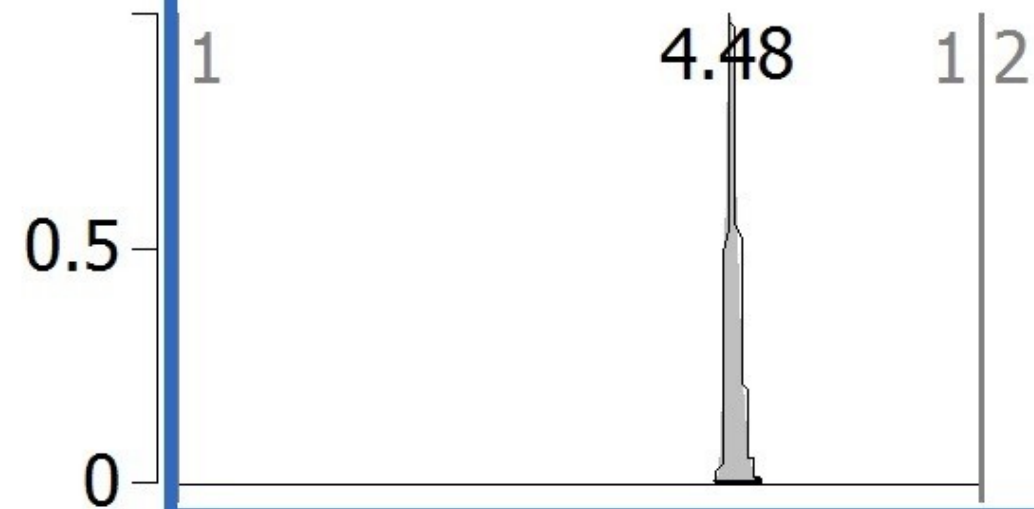
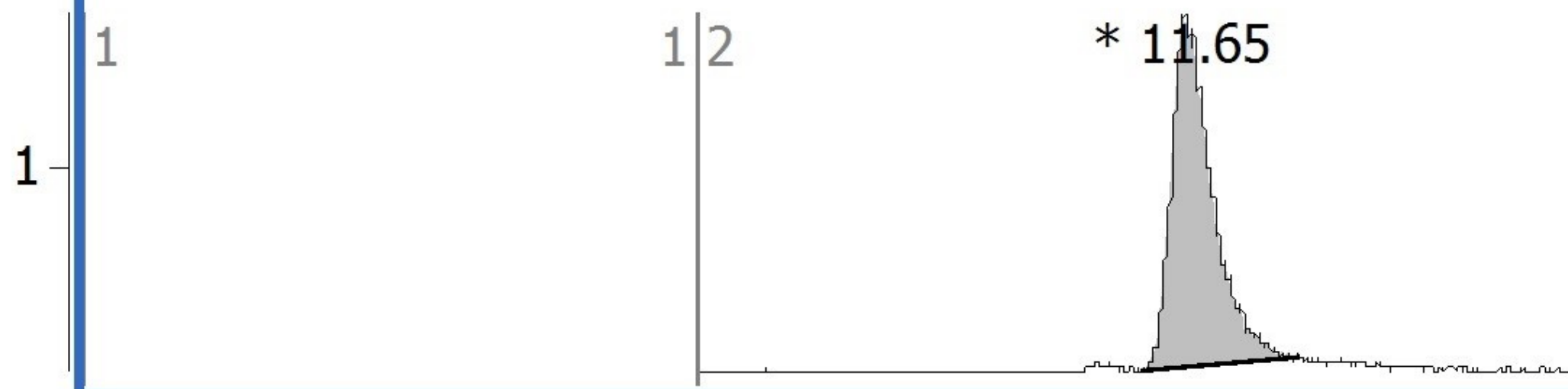


x10² +ESI MRM Frag=135.0V CID@20.0 (317.1 ->261.1) PL02.d



+ESI MRM Frag=135.0V CID@28.0 (324.2->262.1) PL02.d



1 2 3 4 5 6 7 8 9 10 11 12 13 14 15

Counts (%) vs. Acquisition Time (min)