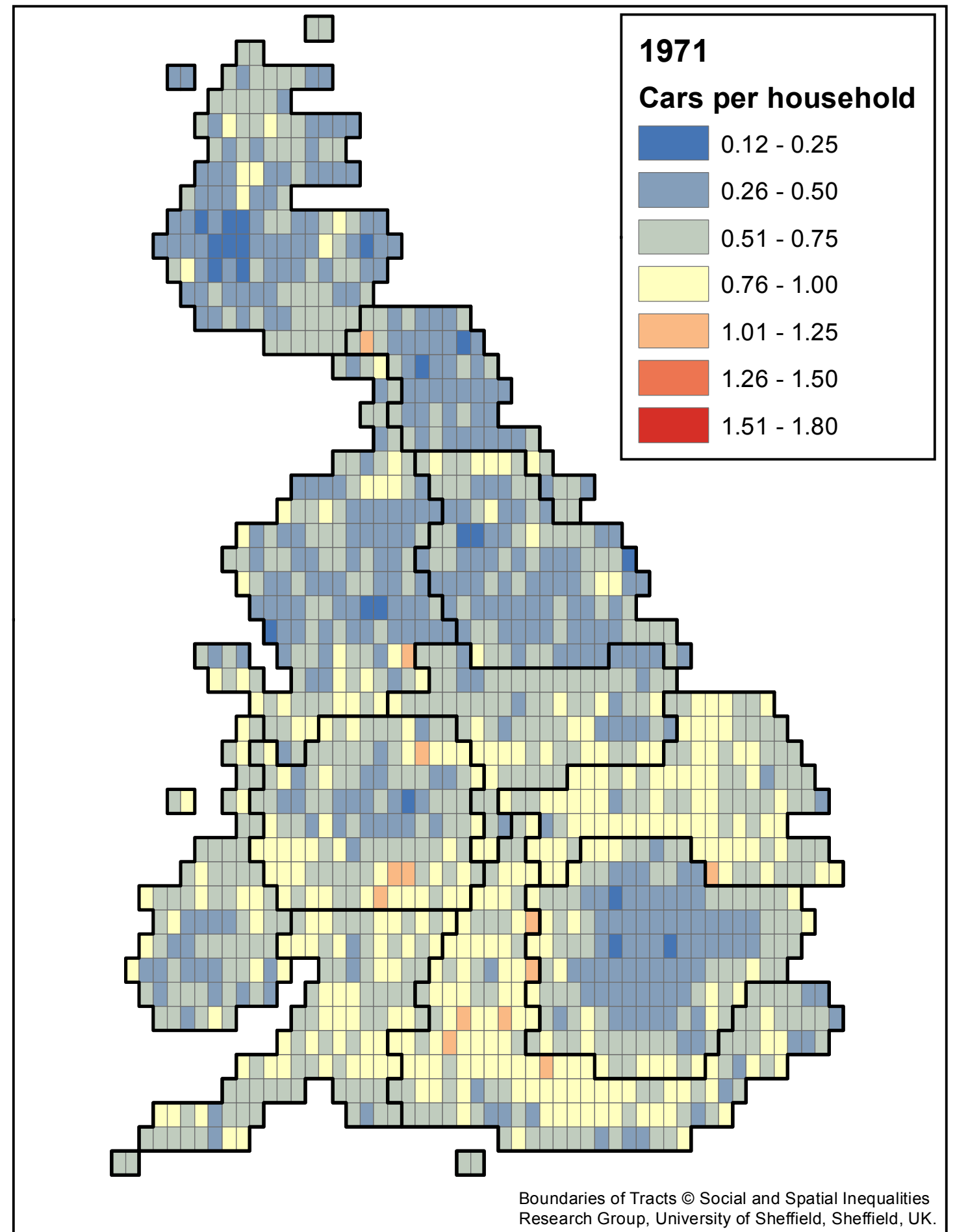


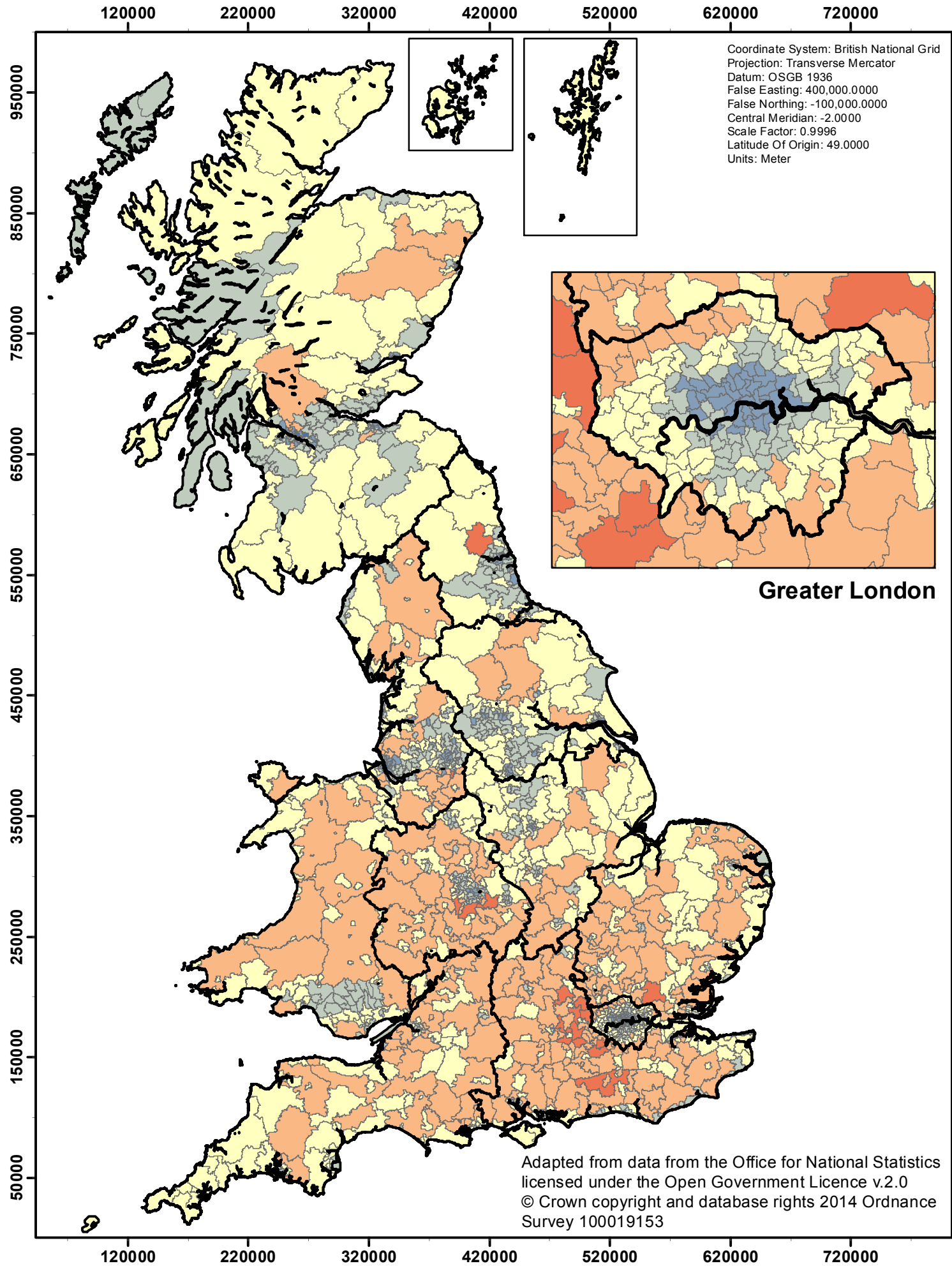
Map 1a : Geographic representation of car ownership in the 1971 census

Mapping Car Ownership in Great Britain over Four Decades

Stephen D Clark, School of Geography, University of Leeds, UK, LS2 9JT
 email : gysc@leeds.ac.uk tel : +44 113 3436707 © Journal of Maps, 2014



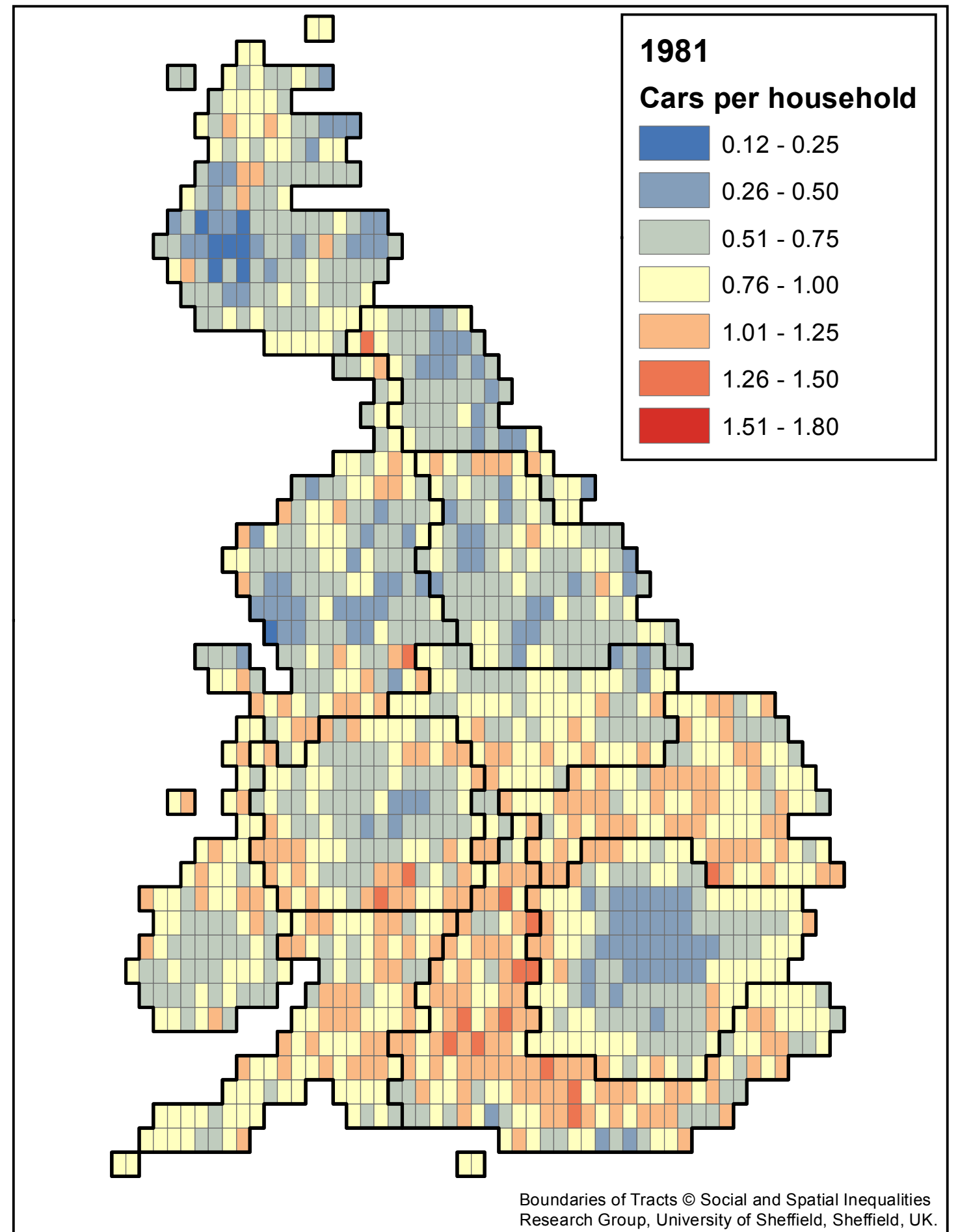
Map 1b : Cartographic representation of car ownership in the 1971 census



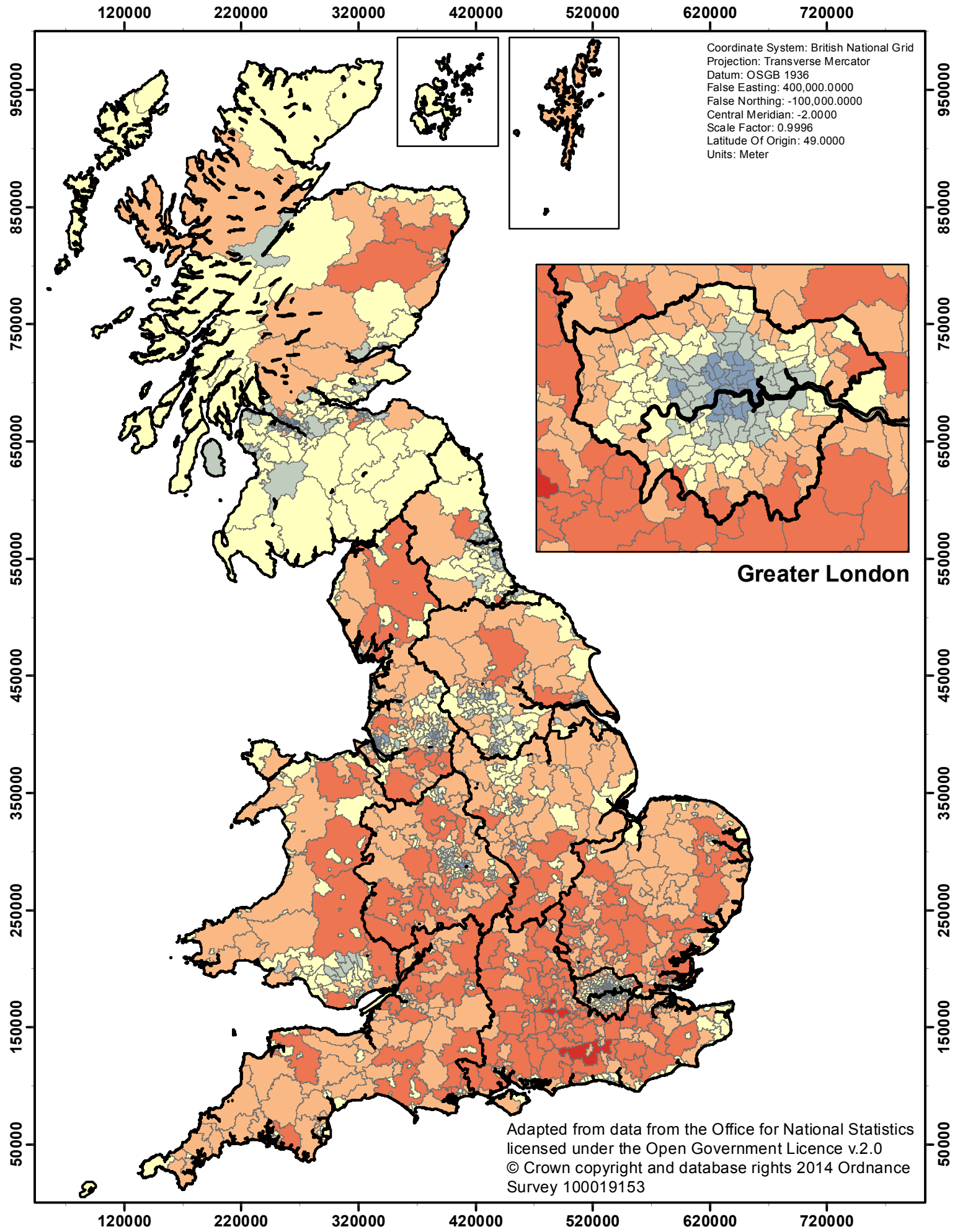
Map 2a : Geographic representation of car ownership in the 1981 census

Mapping Car Ownership in Great Britain over Four Decades

Stephen D Clark, School of Geography, University of Leeds, UK, LS2 9JT
 email : gysc@leeds.ac.uk tel : +44 113 3436707 © Journal of Maps, 2014



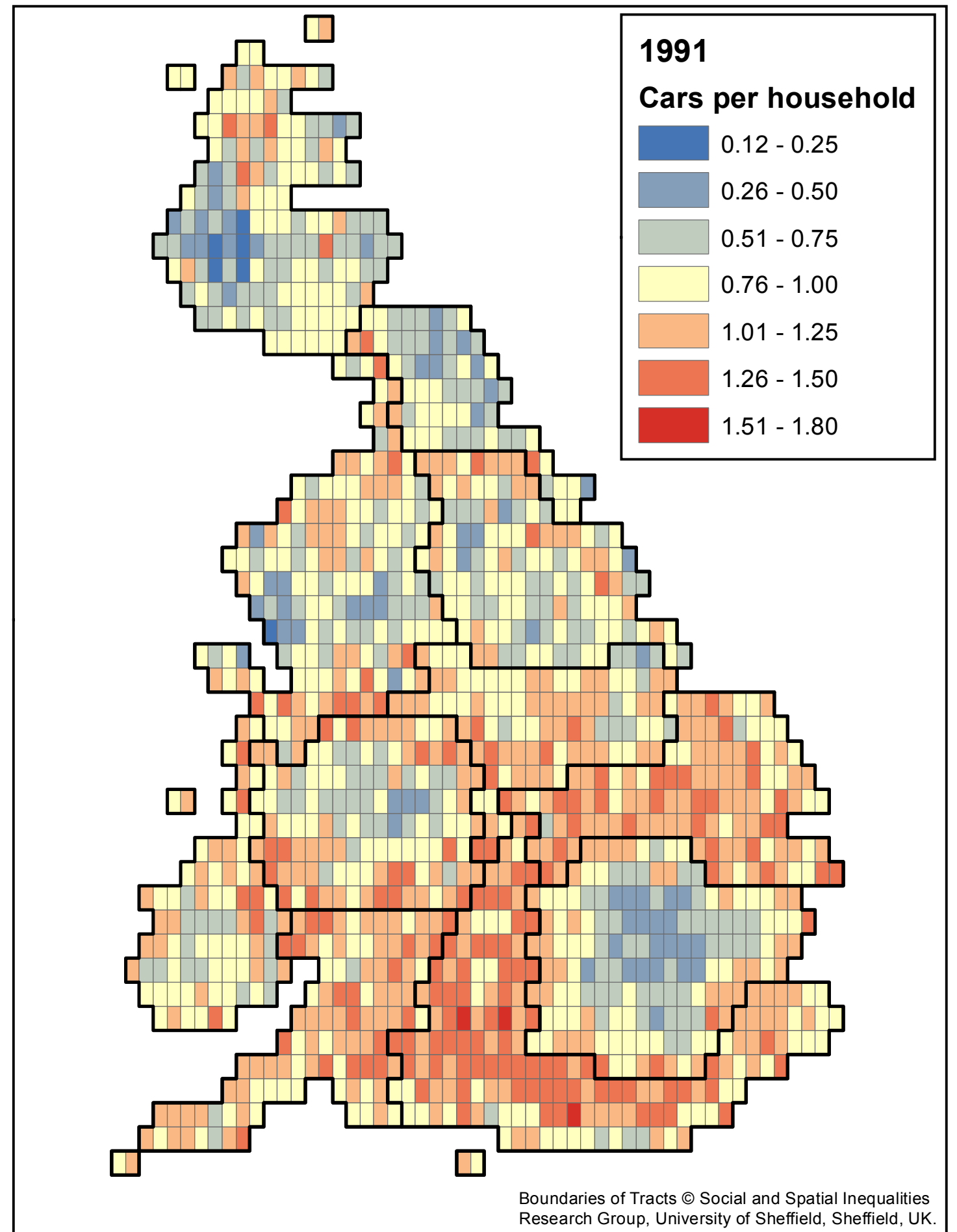
Map 2b : Cartographic representation of car ownership in the 1981 census



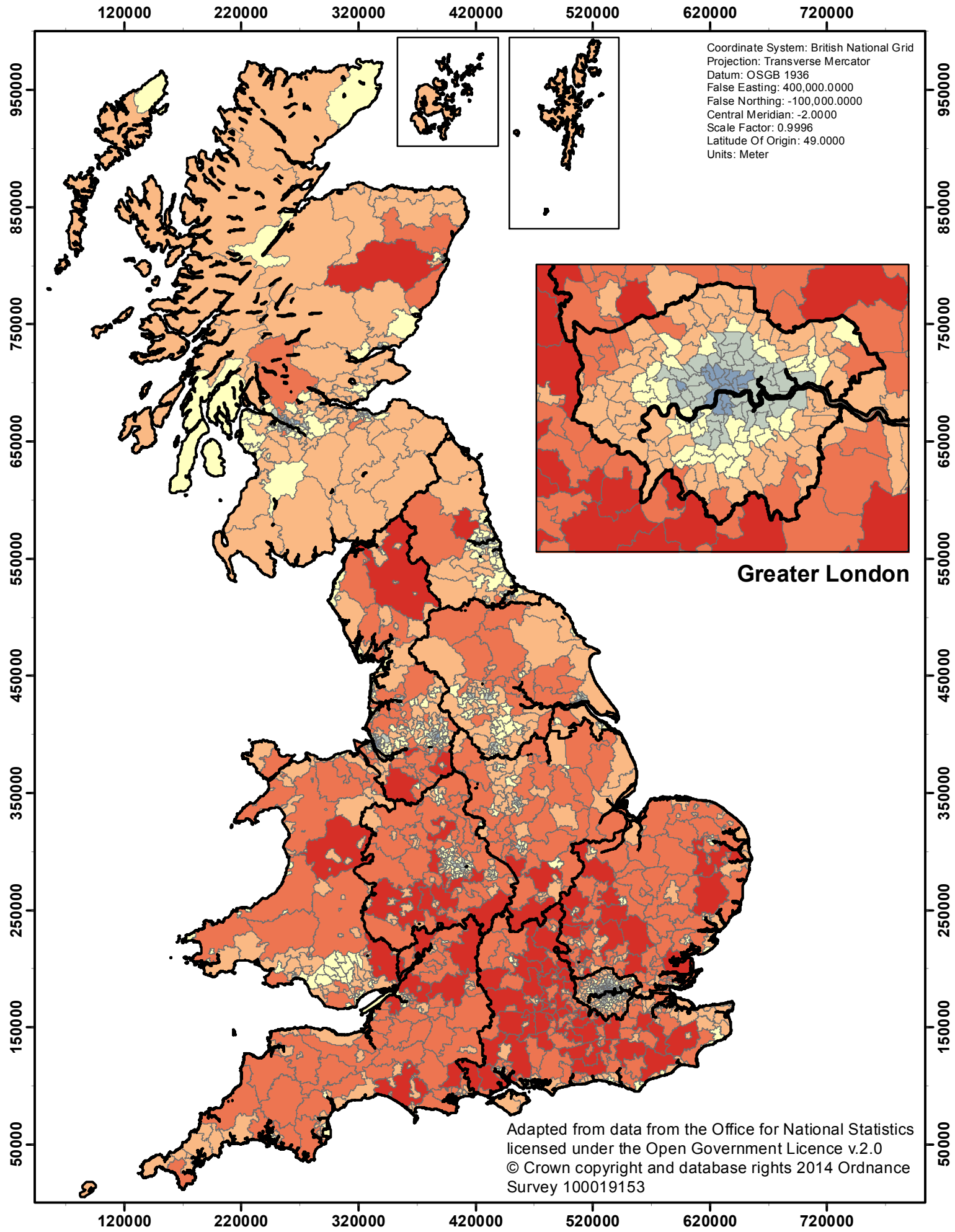
Map 3a : Geographic representation of car ownership in the 1991 census

Mapping Car Ownership in Great Britain over Four Decades

Stephen D Clark, School of Geography, University of Leeds, UK, LS2 9JT
 email : gysc@leeds.ac.uk tel : +44 113 3436707 © Journal of Maps, 2014



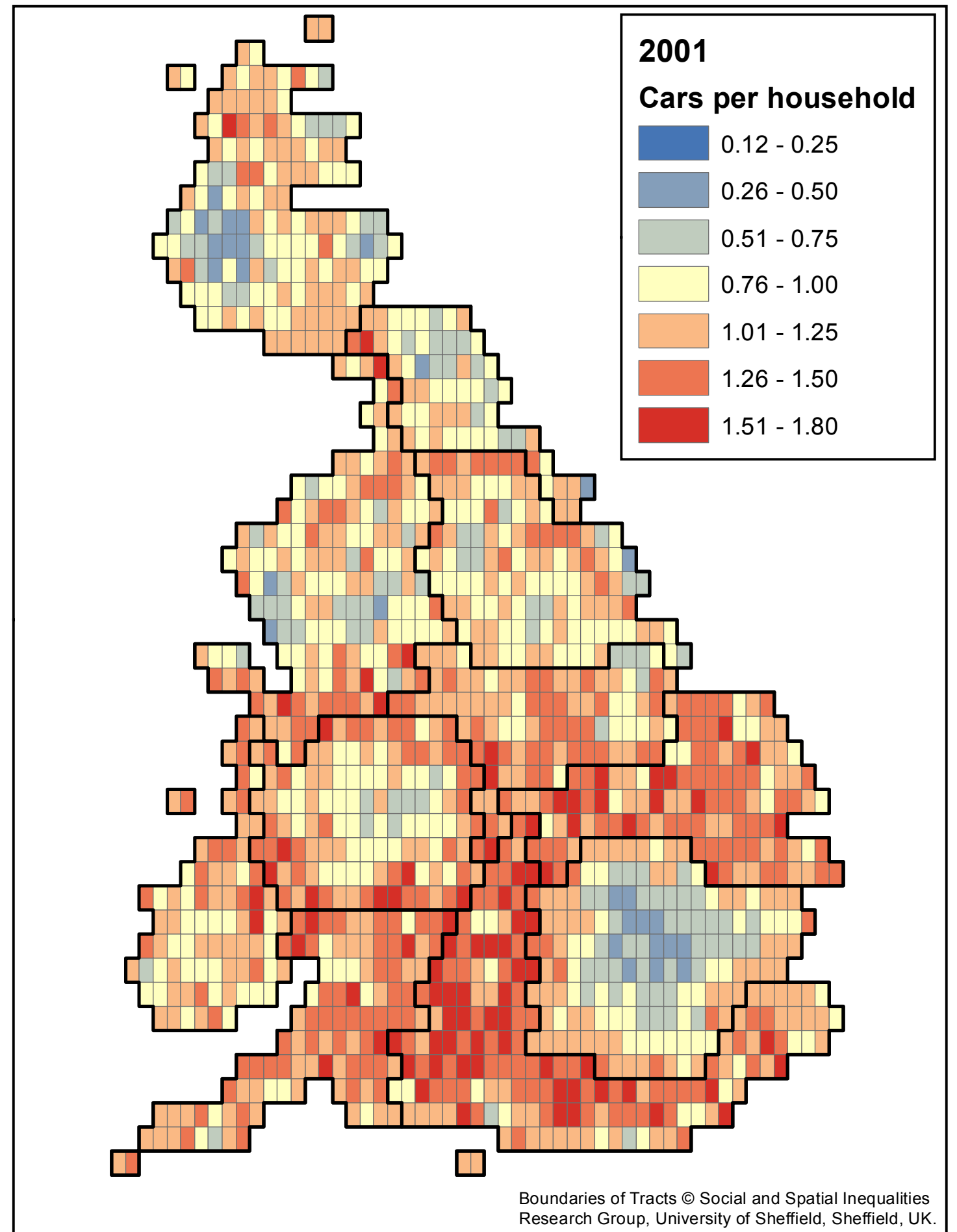
Map 3b : Cartographic representation of car ownership in the 1991 census



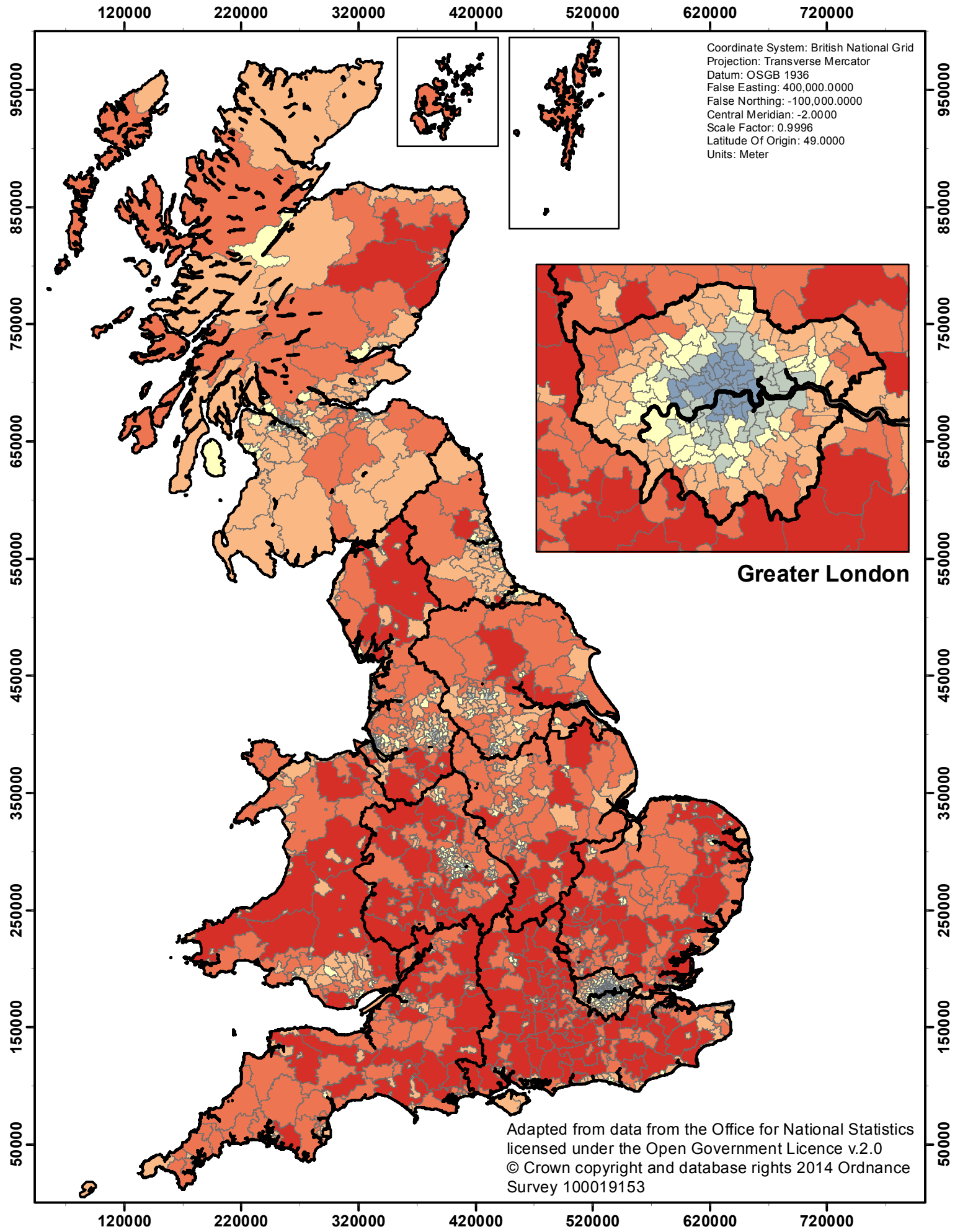
Map 4a : Geographic representation of
 car ownership in the 2001 census

Mapping Car Ownership in Great Britain over Four Decades

Stephen D Clark, School of Geography, University of Leeds, UK, LS2 9JT
 email : gysc@leeds.ac.uk tel : +44 113 3436707 © Journal of Maps, 2014



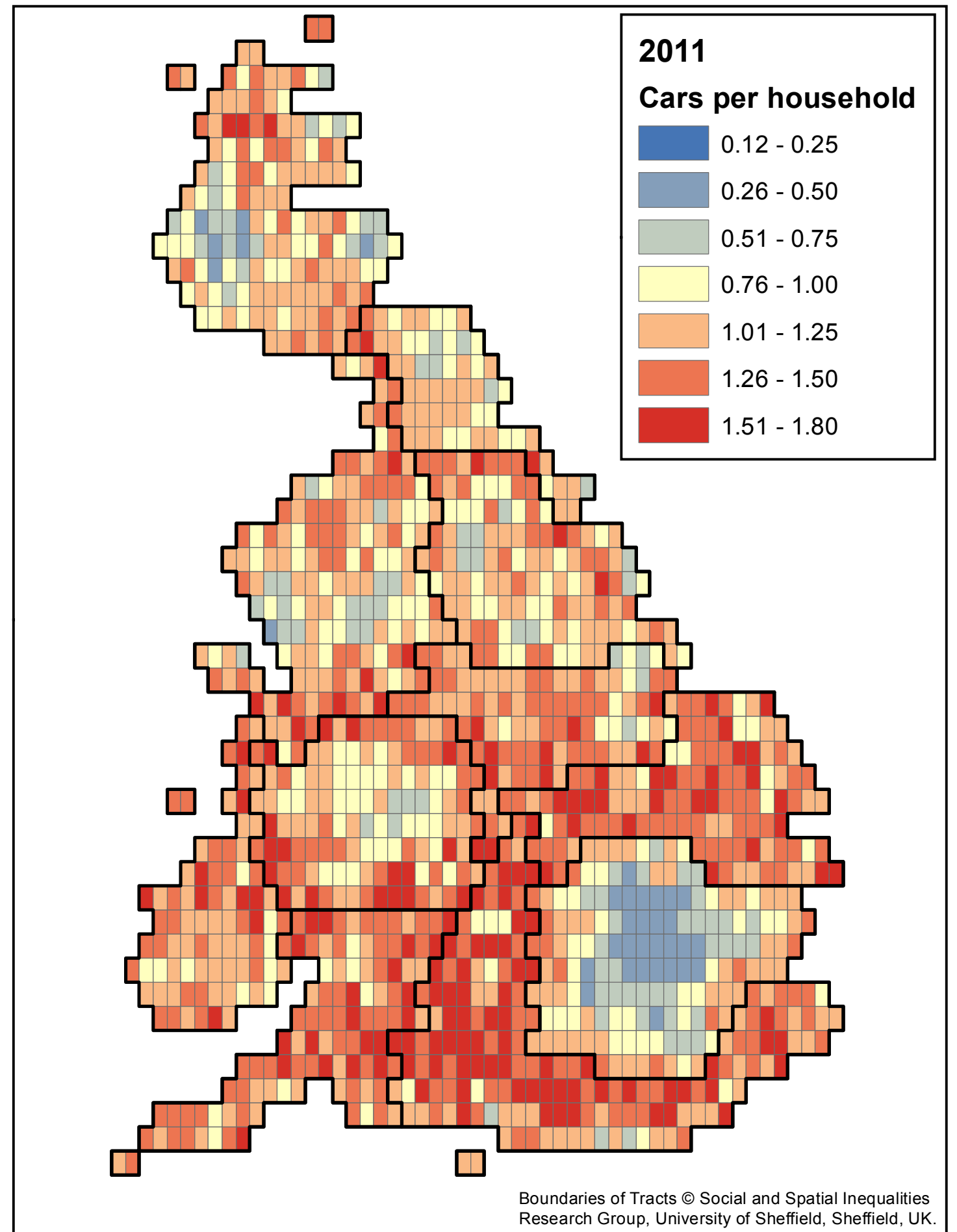
Map 4b : Cartographic representation of
 car ownership in the 2001 census



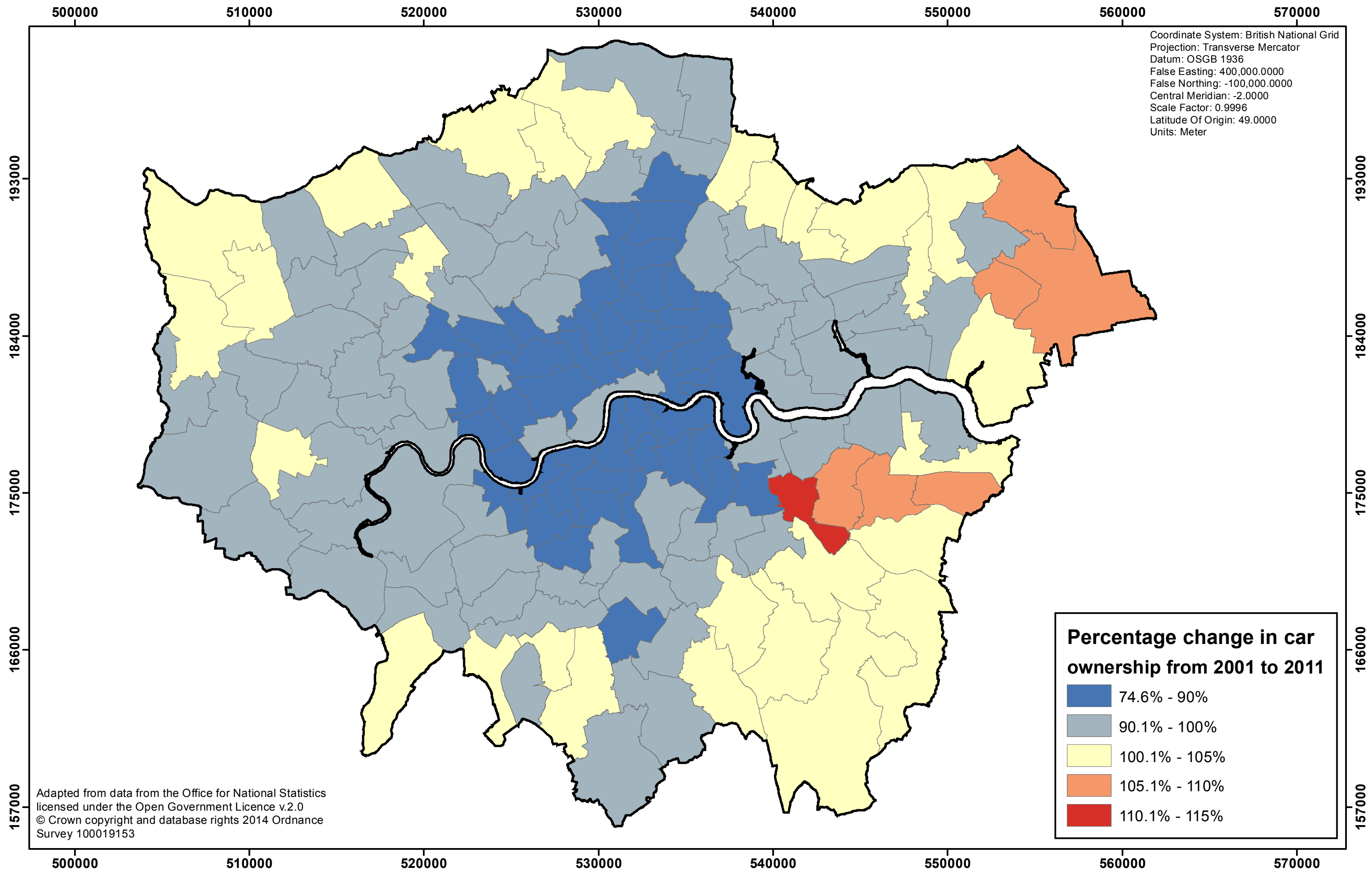
Map 5a : Geographic representation of car ownership in the 2011 census

Mapping Car Ownership in Great Britain over Four Decades

Stephen D Clark, School of Geography, University of Leeds, UK, LS2 9JT
 email : gysc@leeds.ac.uk tel : +44 113 3436707 © Journal of Maps, 2014



Map 5b : Cartographic representation of car ownership in the 2011 census



Map 6 : Percentage change in car ownership levels
in London between the 2001 and 2011 Censuses

Mapping Car Ownership in Great Britain over Four Decades
 Stephen D Clark, School of Geography, University of Leeds, UK, LS2 9JT
 email : gysc@leeds.ac.uk tel : +44 113 3436707 © Journal of Maps, 2014