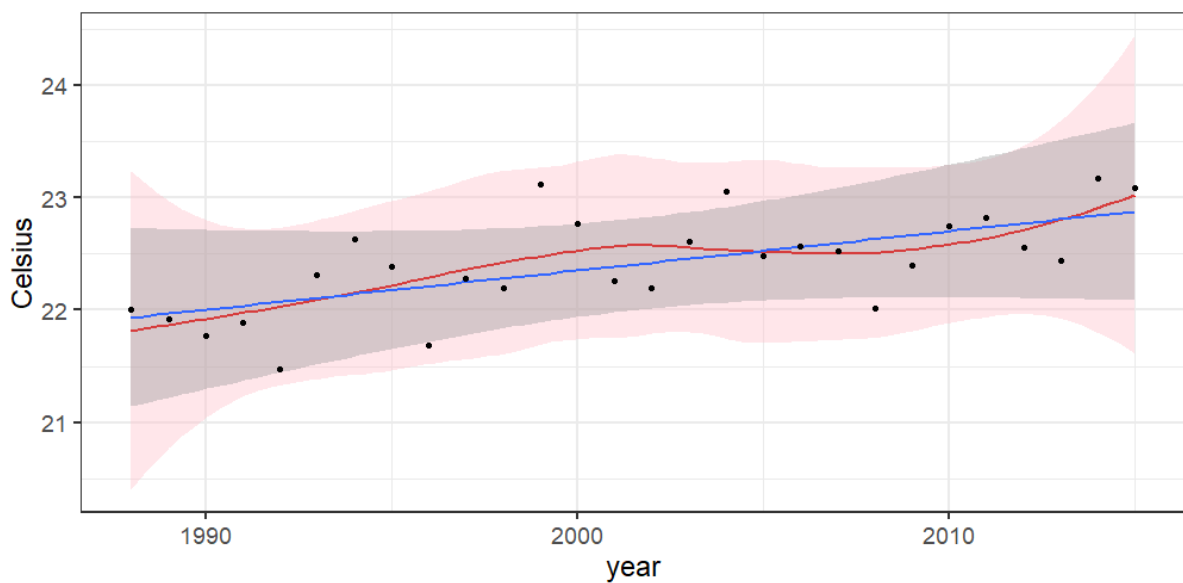


## SUPPLEMENTARY FIGURES

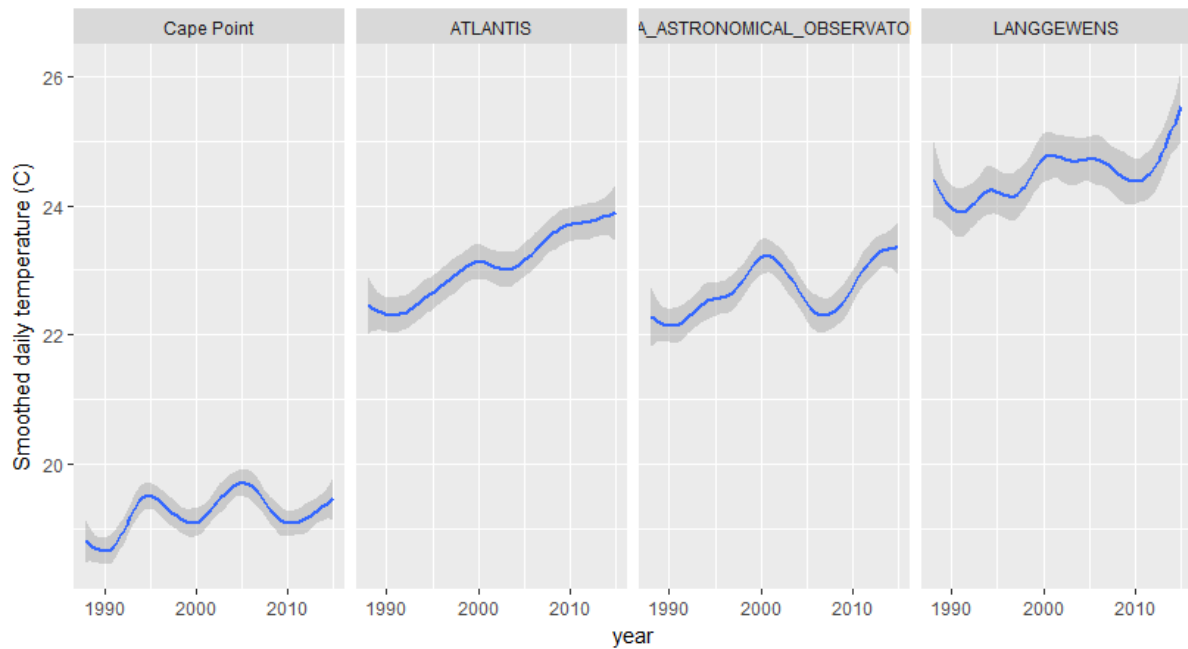
*Ostrich 2020: 1–14*

### **Body mass and condition of a fynbos bird community: investigating impacts of time, weather and raptor abundance from long-term citizen science datasets**

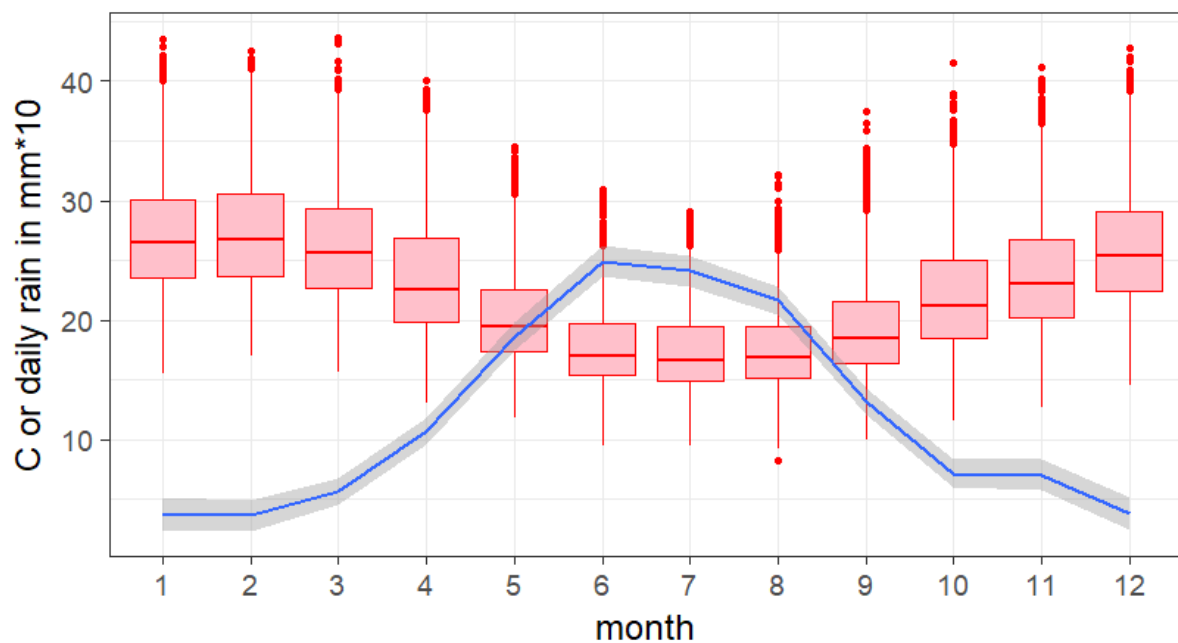
Alan Tristram Kenneth Lee, Phoebe Barnard, Mike Fraser, Chris Lennard, Ben Smit and Hans-Dieter Oschadleus



Supplementary Figure 1. The annual mean maximum daily temperature for 1988 – 2015 aggregated from four weather stations around Cape Town. A linear regression is illustrated by the blue line (standard error (se) as grey shading), while a loess smoother is illustrated as the red line (seen as pink shading).



Supplementary Figure 2. Temperature trends from 1988 to 2015 across four weather stations in the greater Cape Town area from which the smoothed temperature trends were obtained. Trend lines are loess smoothers, with 95% confidence interval indicated by grey shading.



Supplementary Figure 3. Boxplots indicating daily maximum temperature (C) across four weather stations around Cape Town, aggregated from 1988 – 2015 period, with mean daily rainfall trend indicated by blue line.