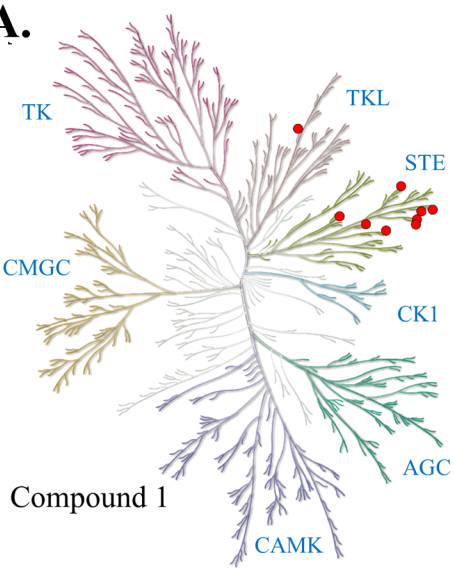
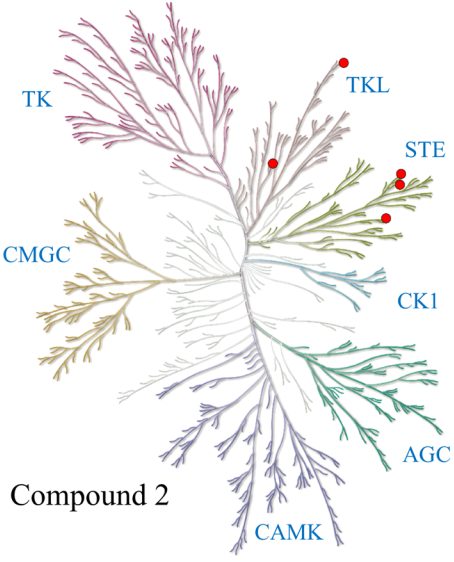


Supplemental Figure 3.

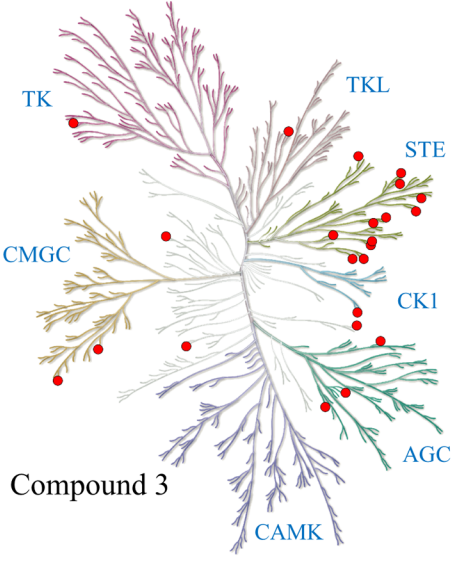
A.



"Illustration reproduced courtesy of Cell Signaling Technology, Inc. (www.cellsignal.com)"



"Illustration reproduced courtesy of Cell Signaling Technology, Inc. (www.cellsignal.com)"



"Illustration reproduced courtesy of Cell Signaling Technology, Inc. (www.cellsignal.com)"

B.

Group	Family	Subfamily	Kinase	Compound		
				1	2	3
AGC	Akt	-	AKT1	1%	21%	13%
AGC	DMPK	ROCK	ROCK2	6%	15%	0%
AGC	GRK	GRK	RHOK	14%	6%	56%
AGC	MAST	MASTL	MASTL	24%	5%	57%
AGC	NDR	-	LATS2	15%	15%	63%
AGC	PDK1	-	PDK1	1%	3%	13%
AGC	PKA	-	PKACa	5%	13%	6%
AGC	PKC	Eta	PKCe	10%	34%	0%
CAMK	CAMK1	-	CaMK1d	5%	1%	8%
CAMK	CAMKL	CHK1	CHK1	10%	0%	14%
CAMK	CAMKL	MELK	MELK	39%	44%	28%
CAMK	DCAMKL	-	DCAMKL1	0%	15%	0%
CAMK	MAPKAPK	MAPKAPK	MAPKAPK2	3%	7%	24%
CAMK	PIM	-	PIM1	14%	3%	22%
CAMK	TSSK	-	TSSK1	10%	12%	7%
CK1	VRK	-	VRK2	46%	45%	79%
CMGC	CDK	CDC2	CDK2	35%	0%	57%
CMGC	CDK	CDK4	CDK4	11%	8%	0%
CMGC	CDK	CDK8	CDK11	16%	29%	40%
CMGC	CDK	CDK9	CDK9	23%	2%	76%
CMGC	CDKL	-	CDKL5	3%	3%	0%
CMGC	MAPK	ERK1	ERK1	45%	7%	0%
CMGC	SRPK	-	MSSK1	14%	0%	2%
Other	Aur	-	AurA	13%	22%	33%
Other	IKK	-	IKKb	13%	18%	46%
Other	IRE	-	IRE1	44%	10%	57%
Other	NEK	NEK2	NEK2	4%	20%	0%
Other	PLK	PLK2	PLK3	15%	20%	72%
Other	ULK	ULK	ULK2	12%	5%	69%
STE	STE7	MEK1	MAP2K1	9%	8%	67%
STE	STE7	MEK1	MAP2K2	20%	8%	61%
STE	STE7	MEK3	MAP2K6	24%	10%	70%
STE	STE7	MEK4	MAP2K4	49%	18%	77%
STE	STE7	MEK5	MAP2K5	10%	0%	53%
STE	STE11	ASK	MAP3K5	19%	0%	43%
STE	STE11	MEKK15	MAP3K19	31%	45%	16%
STE	STE11	MEKK2	MAP3K2	32%	0%	63%
STE	STE20	FRAY	STLK3	51%	8%	34%
STE	STE20	KHS	HPK1 (MAP4K1)	36%	22%	46%
STE	STE20	KHS	GCK (MAP4K2)	19%	53%	76%
STE	STE20	KHS	KHS2 (MAP4K3)	29%	7%	44%
STE	STE20	MSN	MINK	77%	15%	0%
STE	STE20	MSN	TNIK	86%	16%	57%
STE	STE20	MST	MST1	5%	3%	0%
STE	STE20	MST	MST2	0%	2%	0%
STE	STE20	NinaC	MYO3A	51%	12%	37%
STE	STE20	NinaC	MYO3B	57%	42%	52%
STE	STE20	PAKA	PAK1	0%	0%	0%
STE	STE20	PAKA	PAK2	4%	2%	0%
STE	STE20	PAKB	PAK4	2%	6%	28%
STE	STE20	PAKB	PAK6	5%	0%	0%
STE	STE20	SLK	SLK	74%	28%	43%
STE	STE20	TAO	TAO2 (TAOK2)	17%	19%	0%
STE	STE20	TAO	TAO3 (TAOK3)	20%	28%	55%
STE	STE20	YSK	MST3	23%	33%	0%
STE	STE20	YSK	YSK1	6%	12%	0%
STE	STE-Unique	-	COT	22%	4%	23%
STE	STE-Unique	-	NIK	7%	0%	43%
TK	EGFR	-	ErbB2	14%	44%	0%
TK	Eph	-	EphA2	46%	0%	0%
TK	FAK	-	FAK	7%	3%	0%
TK	InsR	-	IGF1R	10%	0%	4%
TK	Syk	-	ZAP70	6%	1%	4%
TK	Tec	-	BTK	13%	17%	70%
TK	Tie	-	TIE2	34%	19%	23%
TKL	IRAK	-	IRAK1	12%	12%	12%
TKL	LISK	TESK	TESK1	26%	31%	55%
TKL	LRRK	-	LRRK2	33%	58%	0%
TKL	MLK	MLK	MLK1	19%	51%	5%
TKL	MLK	ZAK	ZAK	54%	2%	32%