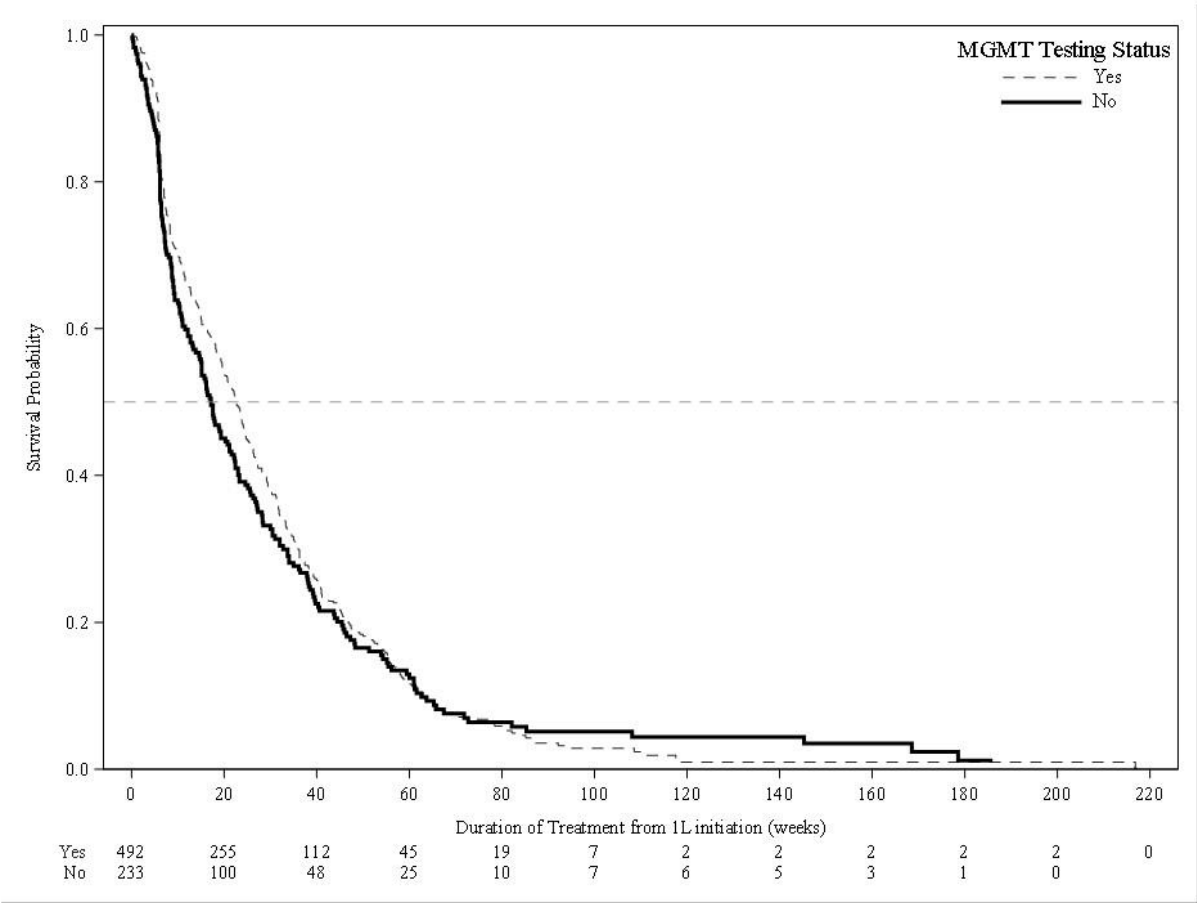


Supplementary Figure 1. Kaplan-Meier curves and estimates for duration of treatment (a) by testing status (b) by methylation status

(a)

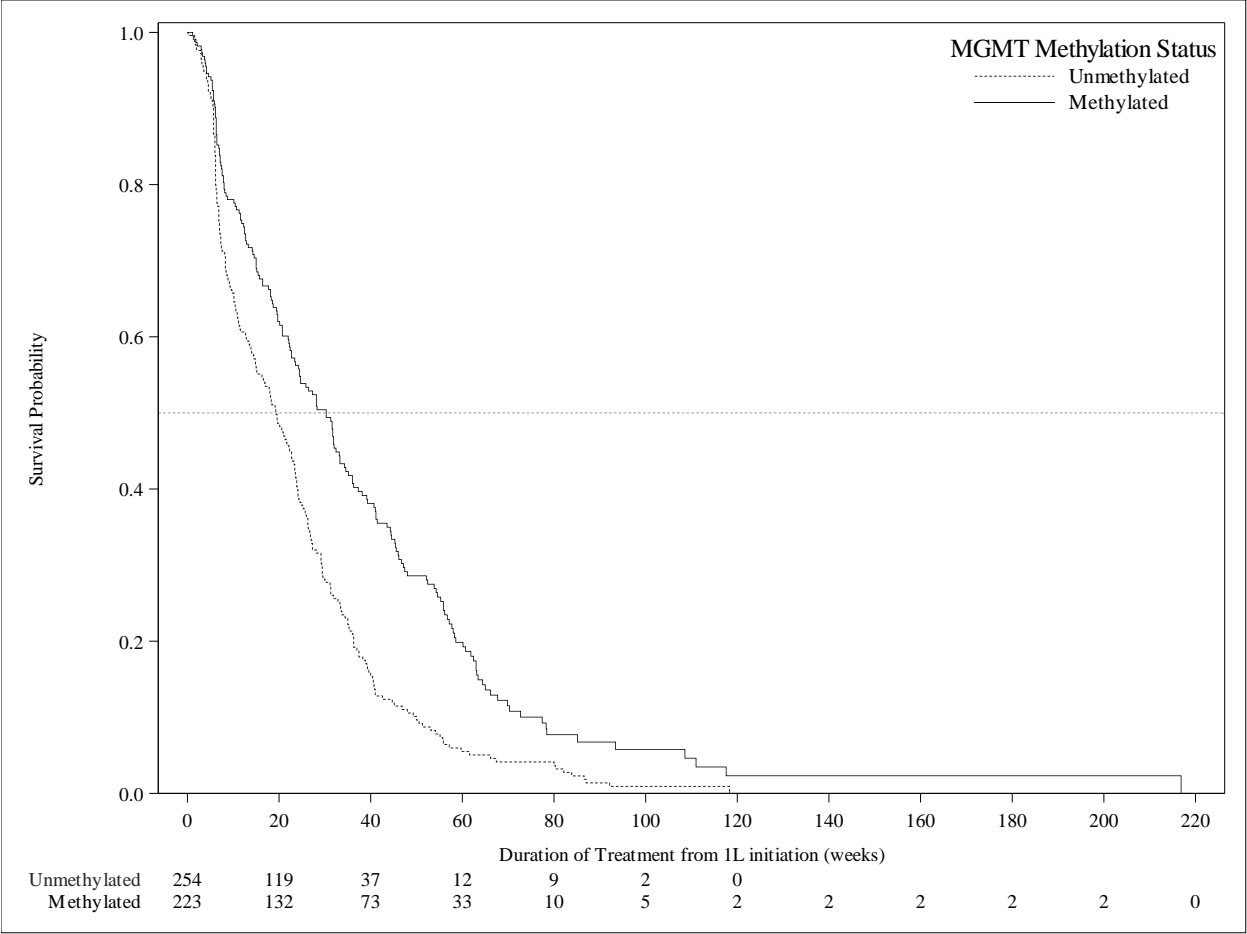


MGMT Testing Status				
Variable	Overall	No	Yes	Log rank p-value
N	725	233	492	0.3697
Events, n (%)	655 (90.3)	211 (90.6)	444 (90.2)	
Mean (SE), weeks	30.2 (1.4)	29.6 (2.6)	30.0 (1.5)	

MGMT Testing Status				
Variable	Overall	No	Yes	Log rank p-value
Median (95% CI), weeks	20.9 (18.3, 23.0)	17.1 (14.6, 21.1)	22.7 (19.7, 24.4)	
Survival probability,				
20 weeks	51.2 (47.4, 54.8)	45.1 (38.5, 51.4)	54.0 (49.5, 58.3)	
40 weeks	24.7 (21.5, 28.0)	22.5 (17.2, 28.2)	25.7 (21.7, 29.7)	
60 weeks	12.0 (9.6, 14.7)	12.4 (8.3, 17.3)	11.8 (8.9, 15.0)	
80 weeks	5.8 (4.1, 8.0)	6.4 (3.5, 10.5)	5.5 (3.5, 8.2)	
100 weeks	3.6 (2.2, 5.5)	5.1 (2.6, 9.0)	2.8 (1.4, 5.1)	
120 weeks	2.2 (1.1, 3.9)	4.4 (2.0, 8.2)	0.9 (0.2, 2.9)	
140 weeks	2.2 (1.1, 3.9)	4.4 (2.0, 8.2)	0.9 (0.2, 2.9)	
160 weeks	1.9 (0.9, 3.6)	3.5 (1.4, 7.3)	0.9 (0.2, 2.9)	
180 weeks	1.1 (0.4, 2.8)	1.2 (0.1, 5.1)	0.9 (0.2, 2.9)	
200 weeks	1.1 (0.4, 2.8)	NA	0.9 (0.2, 2.9)	

Abbreviations: CI, confidence interval; MGMT, O-methylguanine-DNA methyltransferase; NA, not available;
SE, standard error

(b)



MGMT Methylation Status				Log rank p-value
Variable	Overall	Unmethylated	Methylated	
N	477	254	223	<0.0001
Events, n (%)	431 (90.4)	242 (95.3)	189 (84.8)	
Mean (SE), weeks	30.4 (1.5)	23.7 (1.3)	38.6 (3.0)	
Median (95% CI), weeks	23.0 (20.1, 24.7)	19.3 (14.9, 23.0)	30.3 (23.4, 33.3)	

MGMT Methylation Status				Log rank p-value
Variable	Overall	Unmethylated	Methylated	
Survival probability, %				
20 weeks	54.9 (50.3, 59.2)	48.6 (42.3, 54.6)	62.0 (55.2, 68.0)	
40 weeks	25.8 (21.8, 30.0)	15.4 (11.1, 20.2)	38.1 (31.5, 44.7)	
60 weeks	12.1 (9.1, 15.4)	5.5 (3.0, 9.0)	19.9 (14.5, 25.8)	
80 weeks	5.7 (3.6, 8.4)	3.7 (1.7, 6.7)	7.7 (4.2, 12.6)	
100 weeks	2.9 (1.4, 5.2)	0.9 (0.2, 3.0)	5.8 (2.7, 10.6)	
120 weeks	1.0 (0.2, 3.0)	NA	2.3 (0.5, 6.8)	
140 weeks	1.0 (0.2, 3.0)	NA	2.3 (0.5, 6.8)	
160 weeks	1.0 (0.2, 3.0)	NA	2.3 (0.5, 6.8)	
180 weeks	1.0 (0.2, 3.0)	NA	2.3 (0.5, 6.8)	
200 weeks	1.0 (0.2, 3.0)	NA	2.3 (0.5, 6.8)	

Abbreviations: CI, confidence interval; MGMT, O-methylguanine-DNA methyltransferase; NA, not available;

SE, standard error