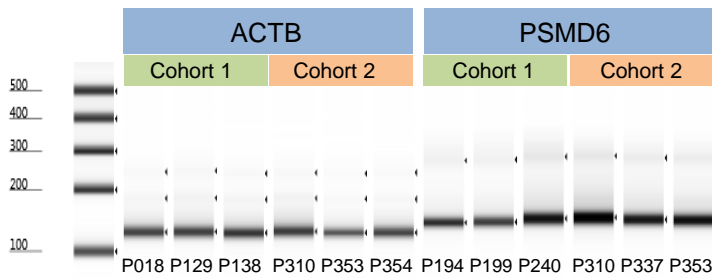


A



B

Primers used for methylation-specific PCR

Gene ^a	Primer sequences, 5'-3'	Amplicon (bp) ^b	T _m (°C) ^c
ACTB_F	TGGTGATGGAGGAGGTTTAGTAAGT	133	60
ACTB_R	AACCAATAAAACCTACTCCTCCCTTAA		
PSMD6_F	GTGTAAATTTTTCGATTGGTAGATAGAC	154	60
PSMD6_R	CGACCTTTACCATCATTACATCG		

^aF: Forward primer, R: Reverse primer

^bbp: Base pair

^cT_m: Melting temperature

Supplementary Figure S2. Methylation-specific PCR (MSP) of bisulfite converted DNA isolated by different methods. (A) MSP products for selected tumors from cohort 1 and cohort 2 using primers for ACTB (β -actin) and PSMD6. DNA from tumors in cohort 1 was isolated using proteinase K, phenol, chloroform, and isoamylalcohol, whereas DNA from tumors in cohort 2 was isolated using PureLink™ Genomic DNA Mini Kit. (B) Primer sequences, amplicon length, and melting temperature for ACTB and PSMD6.