

# Supplementary Figure 1

## A eIF5A1: 201122\_x\_at

Geometric Means:

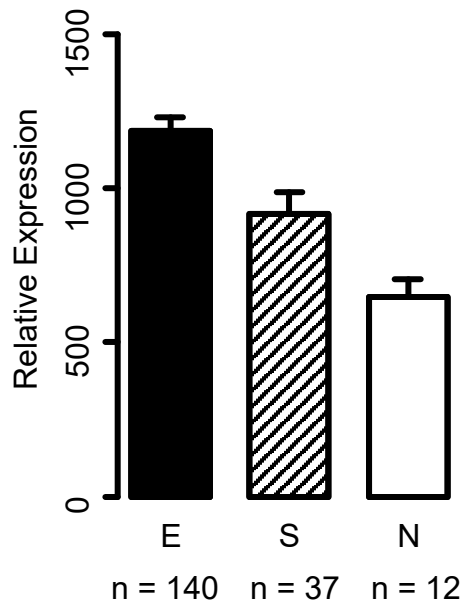
E = 1185, S = 915, N = 649

Ratios:

E/N = 1.83,  $p = 0.000004$

E/S = 1.29,  $p = 0.0015$

S/N = 1.41,  $p = 0.0173$



## B eIF5A2: 220198\_s\_at

Geometric Means:

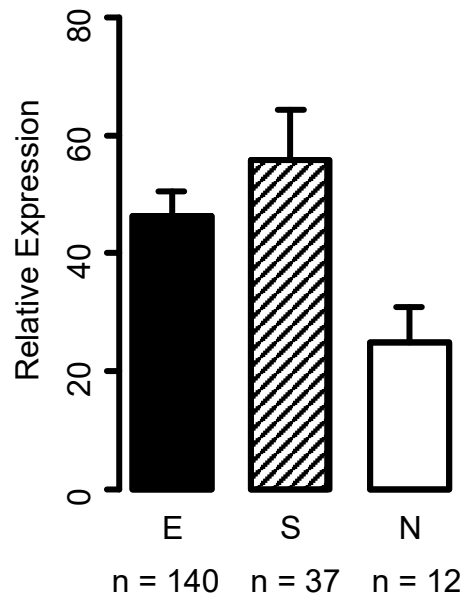
E = 46.3, S = 55.9, N = 24.8

Ratios:

E/N = 1.86,  $p = 0.043$

E/S = 0.82,  $p = 0.310$

S/N = 2.25,  $p = 0.0047$



**Supplementary Figure 1.** Relative expression levels of eIF5A1 and eIF5A2 in 177 EC tumor samples and 12 normal endometrium control samples from our laser captured epithelial / tumor Affymetrix data. E= Endometrioid, S = Serous histologic type of EC and N = normal epithelial cells. n = number of cases. Error bars indicate standard error of mean.