

Picher Field Underground Mine Workings of the Abandoned Tri-State Lead-Zinc Mining District in the United States

Nicholas L. Shepherd^{1*}, Ed Keheley² Russell C. Dutnell³, Carlton A. Folz¹, Brandon Holzbauer-Schweitzer¹, and Robert W. Nairn¹

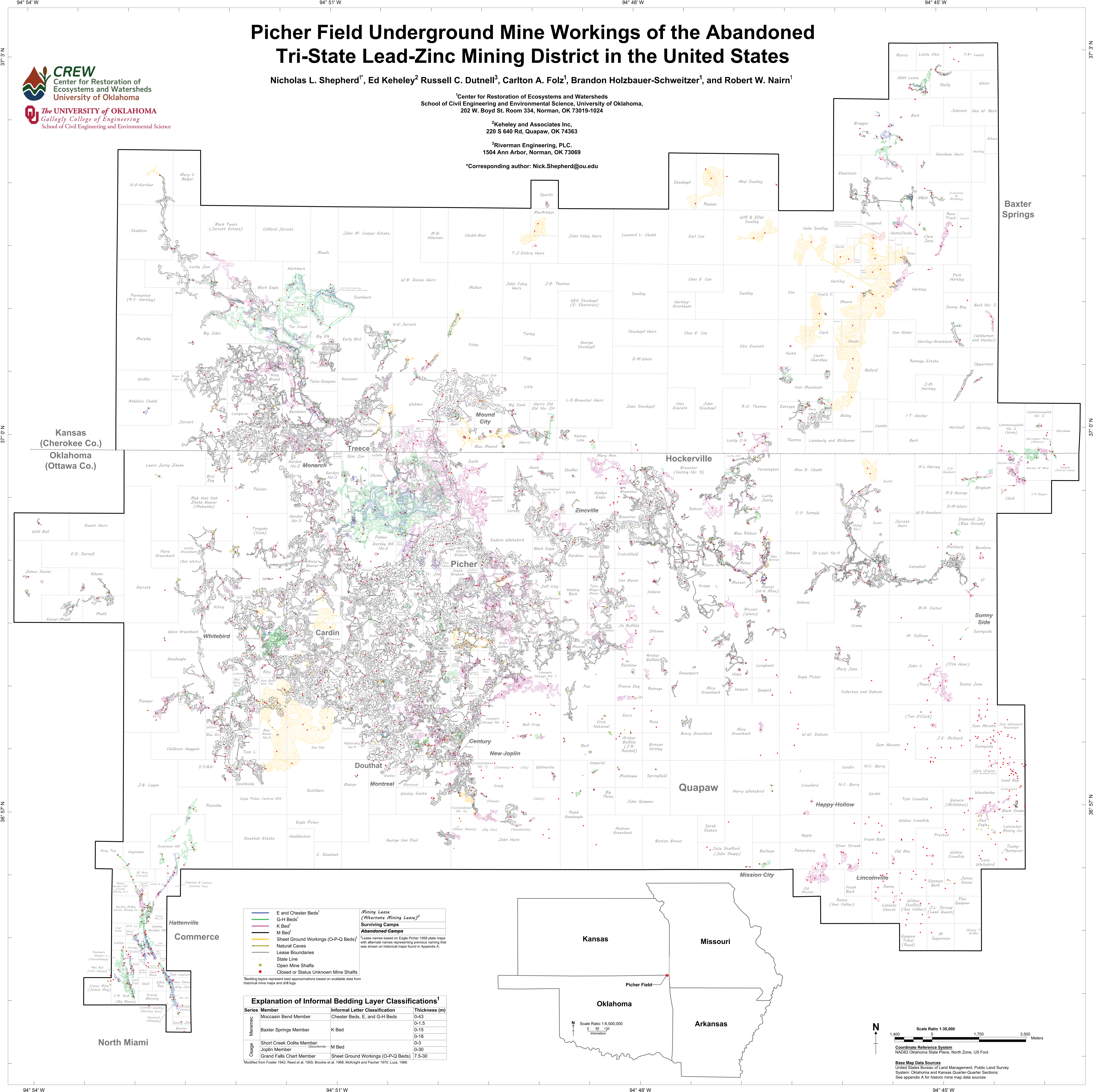


¹Center for Restoration of Ecosystems and Watersheds
School of Civil Engineering and Environmental Science, University of Oklahoma,
202 W. Boyd St. Room 334, Norman, OK 73019-1024

²Keheley and Associates Inc,
220 S 640 Rd, Quapaw, OK 74363

³Riverman Engineering, PLC,
1504 Ann Arbor, Norman, OK 73069

*Corresponding author: Nick.Shepherd@ou.edu



Mining Lease (Alternate Mining Lease)²
Surviving Camps
Abandoned Camps
¹Lease names based on Eagle Picher 1958 plate maps with alternate names representing previous naming that was shown on historical maps found in Appendix A.

Explanation of Informal Bedding Layer Classifications ¹			
Series	Member	Informal Letter Classification	Thickness (m)
Meramec	Moccasin Bend Member	Chester Beds, E, and G-H Beds	0-43
	Baxter Springs Member	K Bed	0-1.5
	Short Creek Oolite Member	M Bed	0-15
Osage	Joelinton Member	M Bed	0-18
	Joelinton Member	M Bed	0-3
	Grand Falls Chert Member	Sheet Ground Workings (O-P-Q Beds)	0-30
Modified from Fowler 1942; Reed et al. 1955; Brockie et al. 1968; McKnight and Fischer 1970; Luza, 1988.			

Base Map Data Sources
United States Bureau of Land Management, Public Land Survey
System: Oklahoma and Kansas Quarter-Quarter Sections;
See appendix A for historic mine map data sources