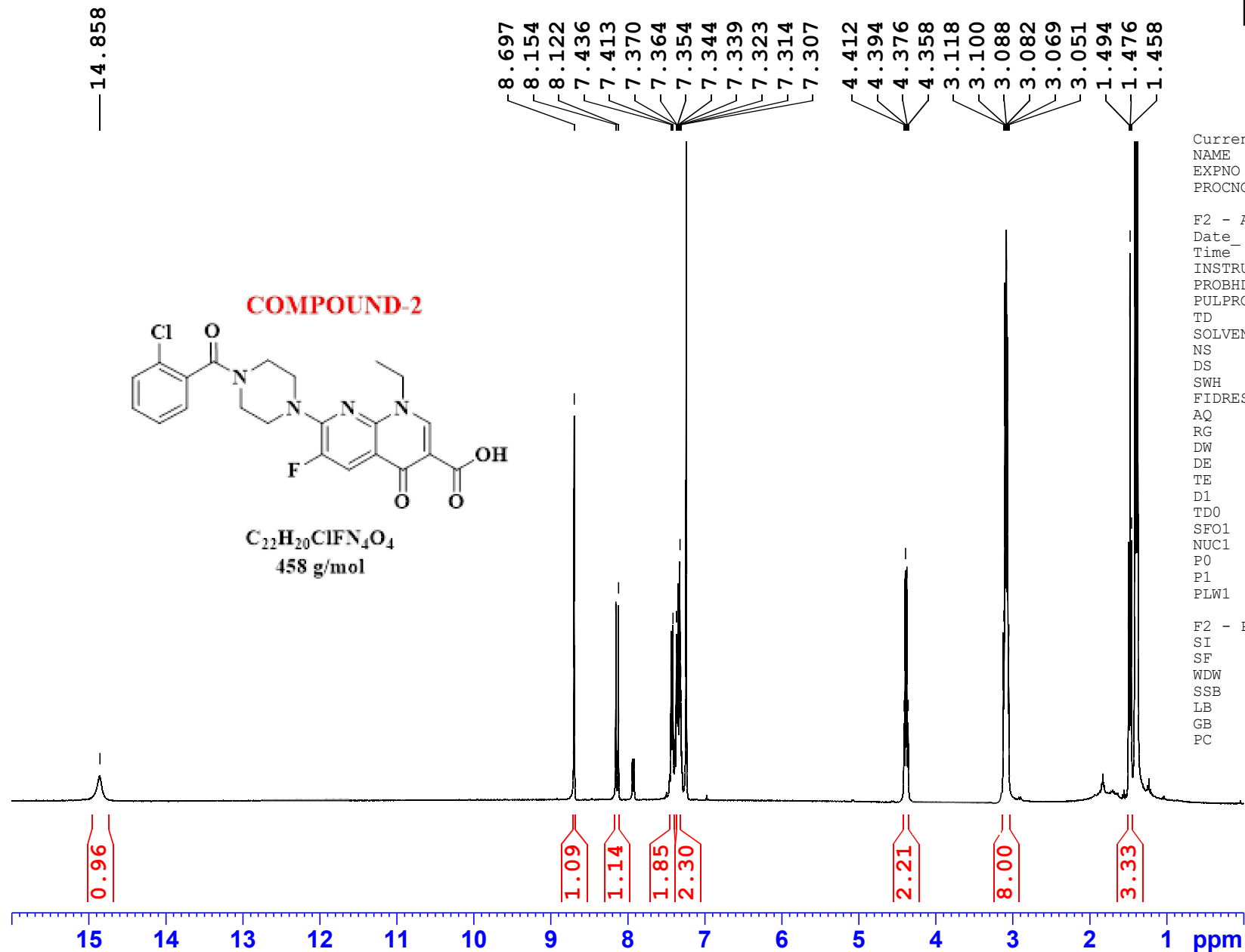


```

F2 - Processing parameters
SI                      32768
SF                      399.9300176 MHz
WDW                      EM
SSB                      0
LB                      0.30 Hz
GB                      0
PC                      1.00

```

Mehwish Solangi/Dr,Khalid/RSE-05-MS/Cdcl3/  
1H



Current Data Parameters  
NAME ENOXACIN (RSE-MS)  
EXPNO 7  
PROCNO 1

F2 - Acquisition Parameters

Date 20211116  
Time 11.21 h  
INSTRUM AVNeo\_400  
PROBHD Z8247\_0040 (PH  
PULPROG zg30  
TD 32768  
SOLVENT CDCl3  
NS 64  
DS 0  
SWH 7812.500 Hz  
FIDRES 0.476837 Hz  
AQ 2.0971520 sec  
RG 101  
DW 64.000 usec  
DE 14.30 usec  
TE 299.0 K  
D1 2.00000000 sec  
TD0 1  
SF01 399.9331994 MHz  
NUC1 1H  
P0 3.32 usec  
P1 9.95 usec  
PLW1 6.00000000 W

F2 - Processing parameters

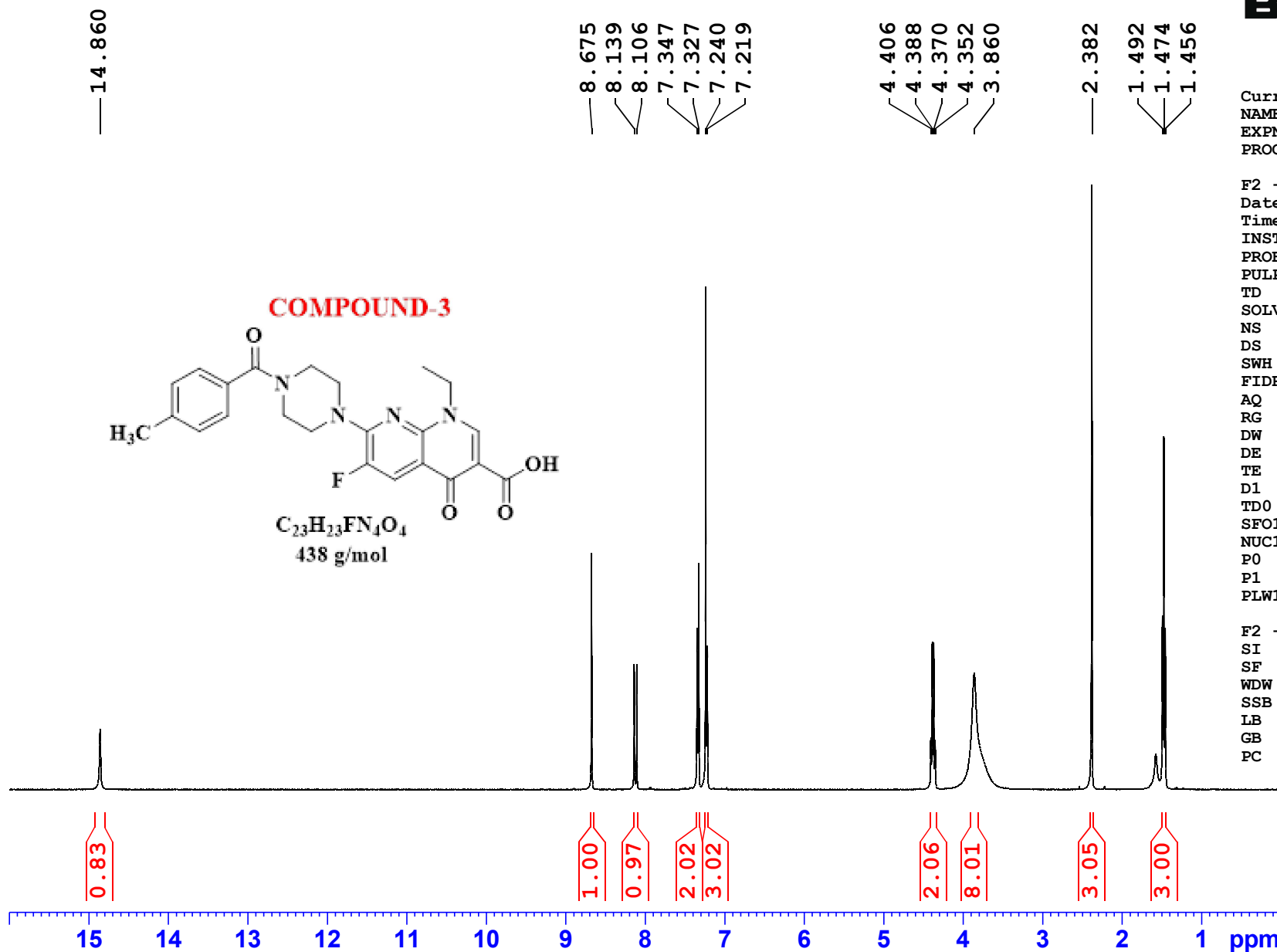
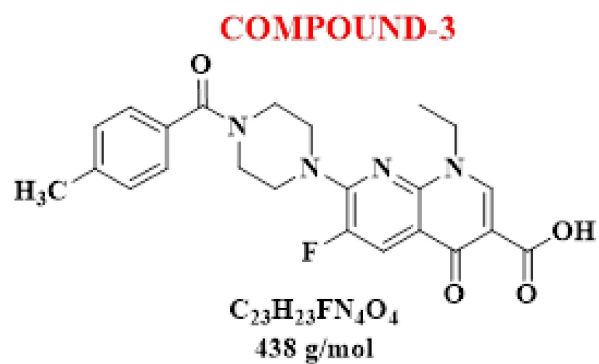
SI 32768  
SF 399.9300176 MHz  
WDW EM  
SSB 0  
LB 0.30 Hz  
GB 0  
PC 1.00

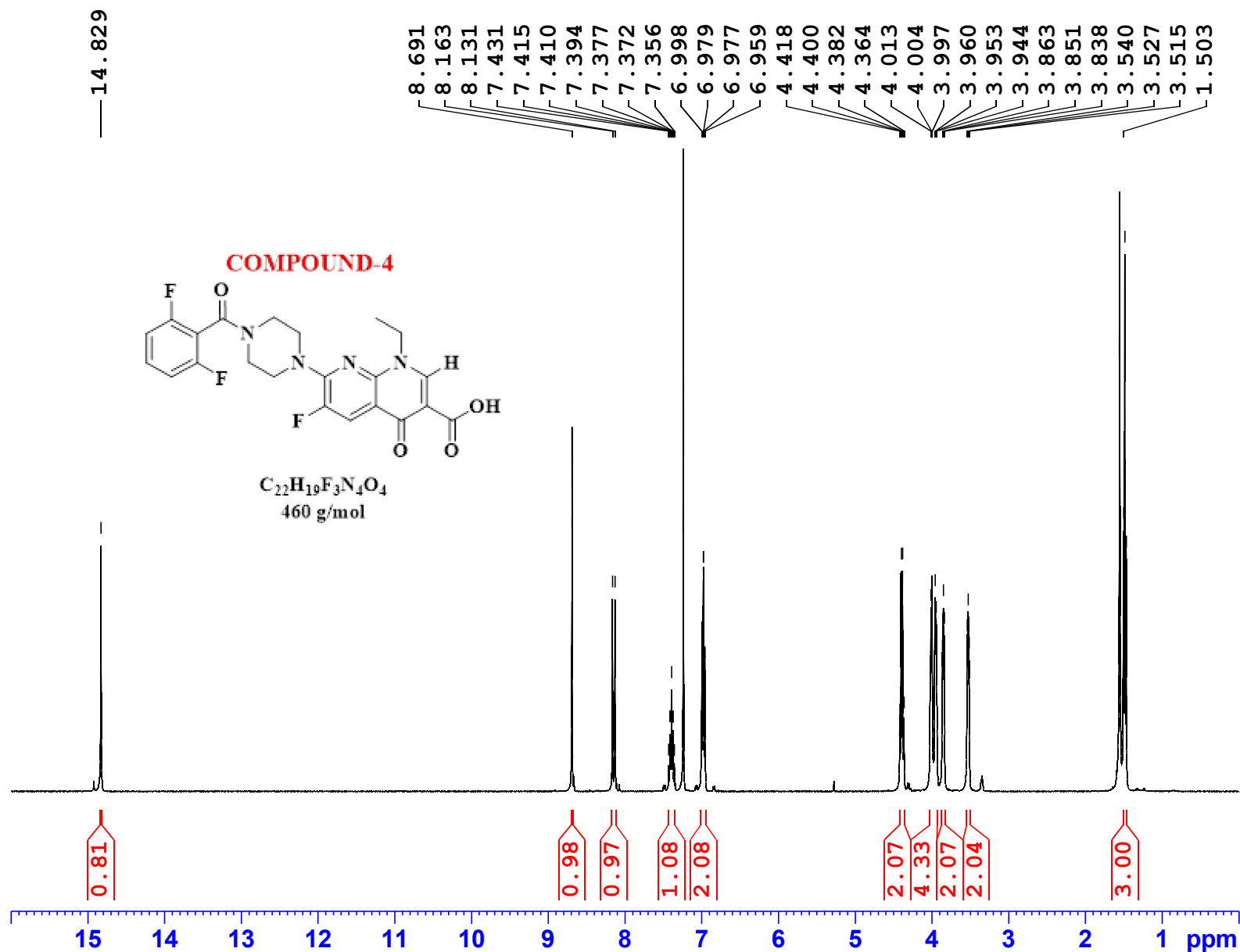


Current Data Parameters  
NAME ENOXACIN (RSE-MS)  
EXPNO 9  
PROCNO 1

F2 - Acquisition Parameters  
Date\_ 20211116  
Time 11.43 h  
INSTRUM AVNeo\_400  
PROBHD Z8247\_0040 (PH  
PULPROG zg30  
TD 32768  
SOLVENT CDCl3  
NS 64  
DS 0  
SWH 7812.500 Hz  
FIDRES 0.476837 Hz  
AQ 2.0971520 sec  
RG 101  
DW 64.000 usec  
DE 14.30 usec  
TE 299.0 K  
D1 2.00000000 sec  
TD0 1  
SFO1 399.9331994 MHz  
NUC1 1H  
P0 3.32 usec  
P1 9.95 usec  
PLW1 6.00000000 W

F2 - Processing parameters  
SI 32768  
SF 399.9300176 MHz  
WDW EM  
SSB 0  
LB 0.30 Hz  
GB 0  
PC 1.00





Current Data Parameters  
NAME ENOXACIN (RSE-MS)  
EXPNO 14  
PROCNO 1

F2 - Acquisition Parameters  
Date\_ 20211115  
Time 15.42 h  
INSTRUM AVNeo\_400  
PROBHD Z8247\_0040 (PH  
PULPROG zg30  
TD 32768  
SOLVENT CDCl3  
NS 32  
DS 0  
SWH 7812.500 Hz  
FIDRES 0.476837 Hz  
AQ 2.0971520 sec  
RG 101  
DW 64.000 usec  
DE 14.30 usec  
TE 299.0 K  
D1 2.00000000 sec  
TD0 1  
SFO1 399.9331994 MHz  
NUC1 1H  
P0 3.32 usec  
P1 9.95 usec  
PLW1 6.00000000 W

F2 - Processing parameters  
SI 32768  
SF 399.9300177 MHz  
WDW EM  
SSB 0  
LB 0.30 Hz  
GB 0  
PC 1.00

```
F2 - Processing parameters
SI                32768
SF                399.9300177 MHz
WDW                EM
SSB                0
LB                0.30 Hz
GB                0
PC                1.00
```

