

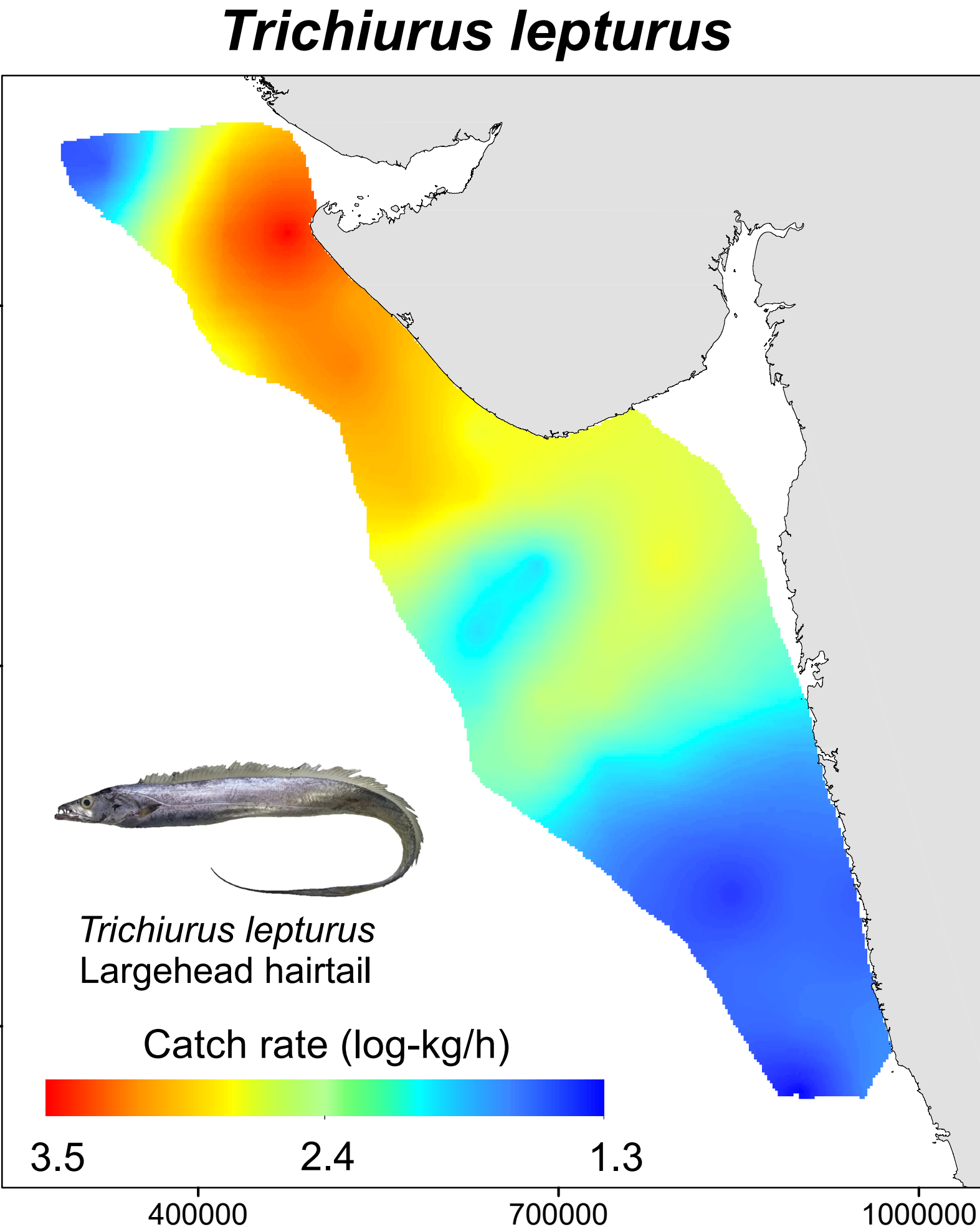
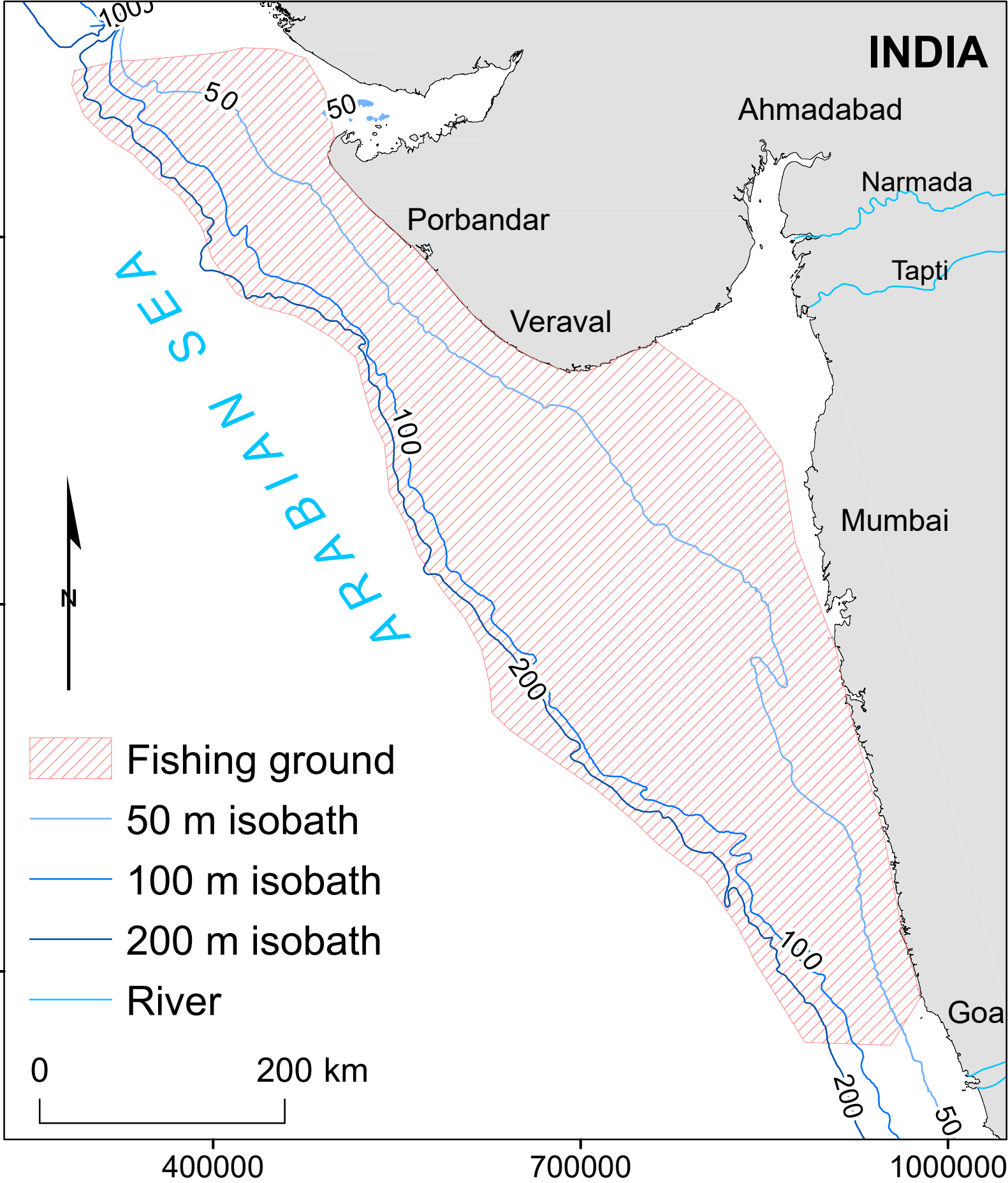
Bycatch species distribution from mid-water trawlers in the north-eastern Arabian Sea: A step towards the implementation of Marine Spatial Planning

P. Abdul Azeez^a, Prathibha Rohit^a, K. Mohammed Koya^a, Latha Shenoy^b, A. K. Jaiswar^b, Mini Raman^c, Shikha Rahangdale^a, Divu Damodaran^a

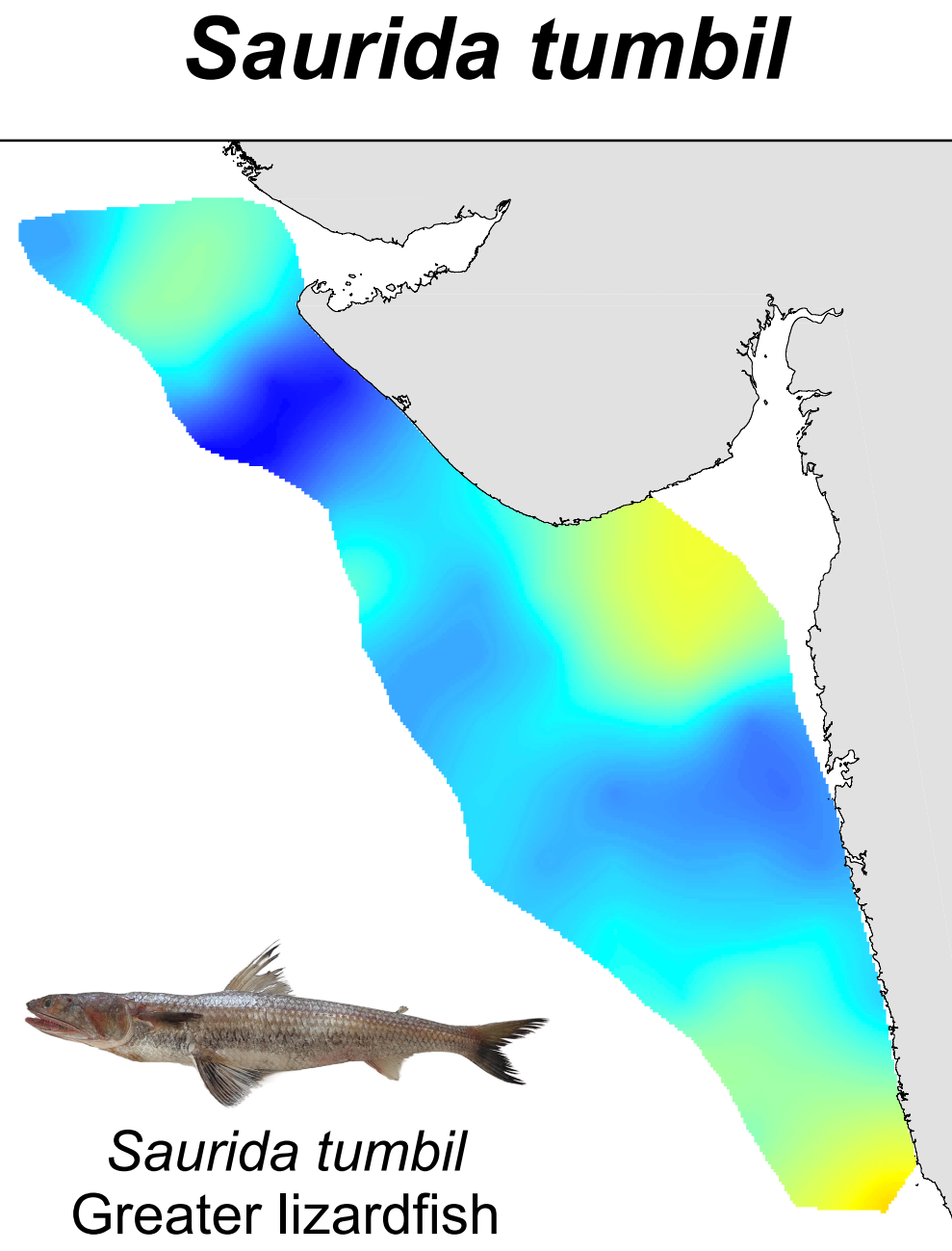
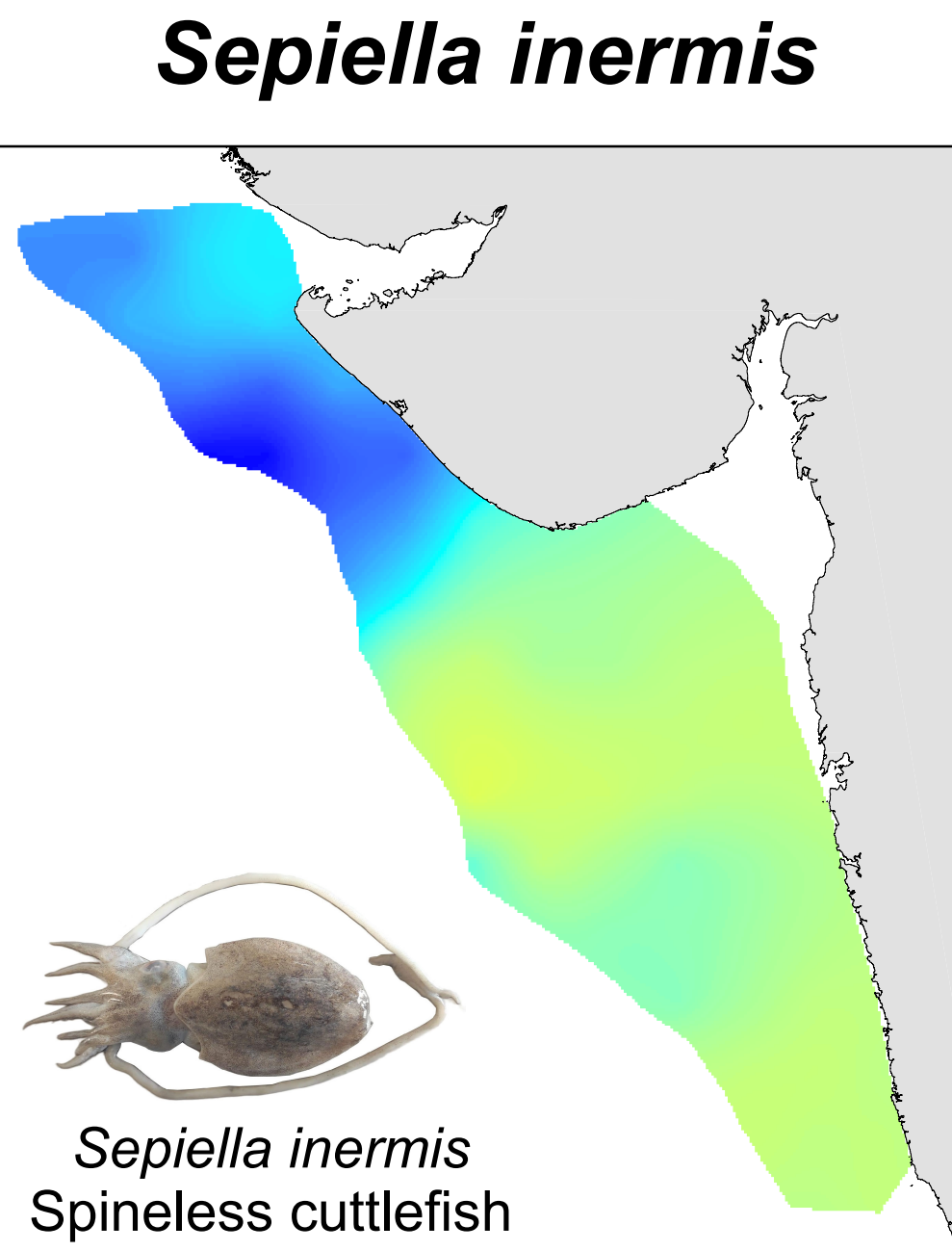
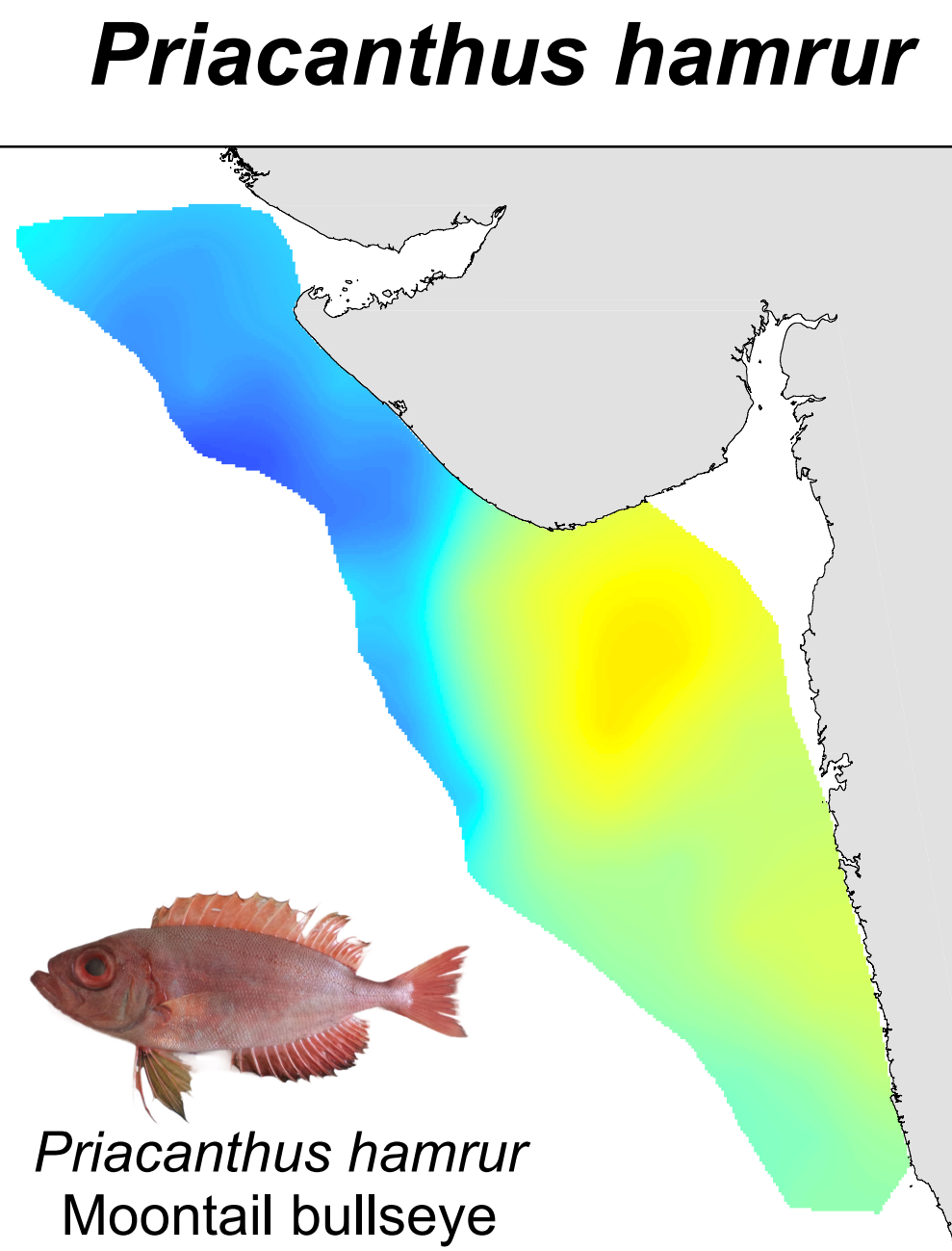
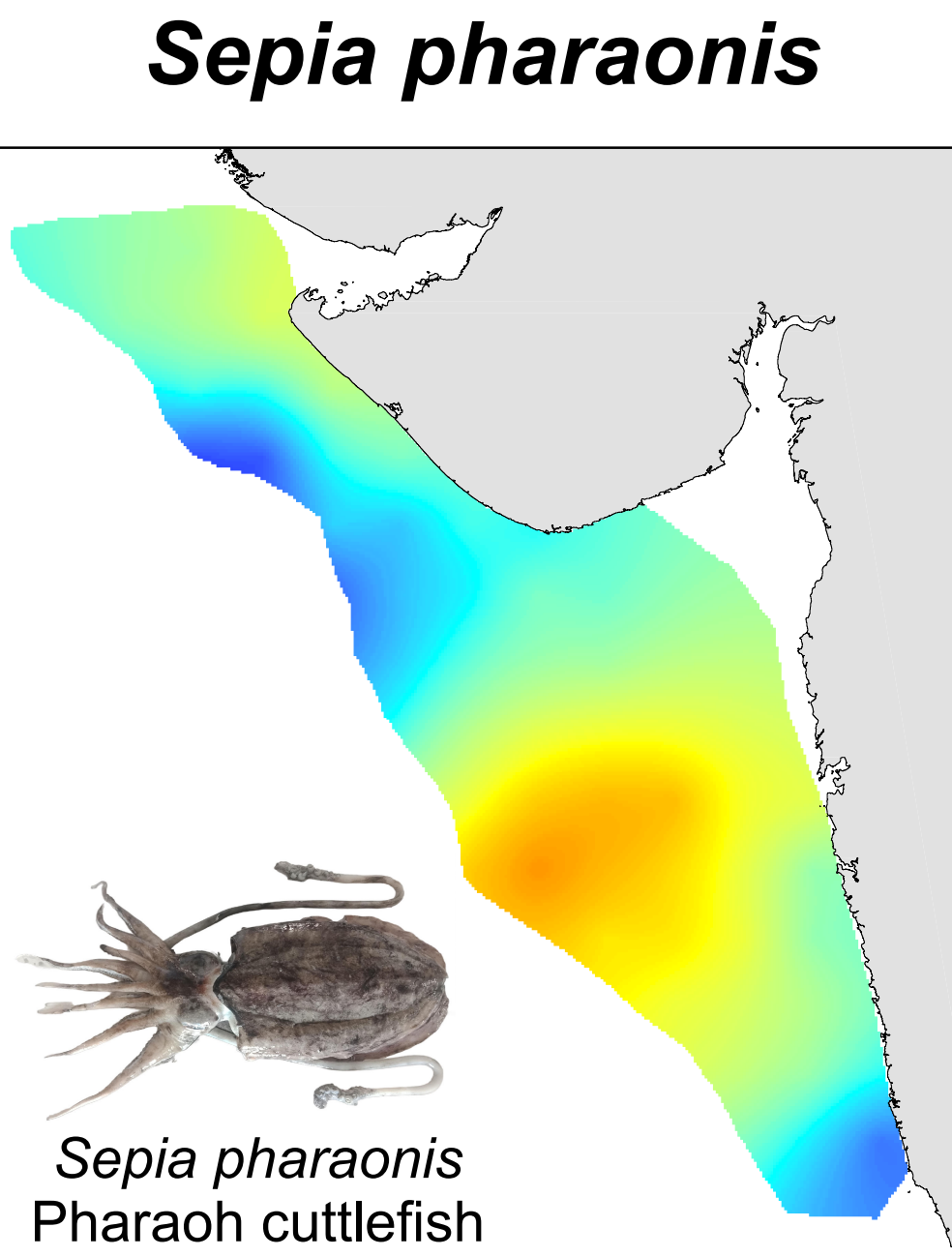
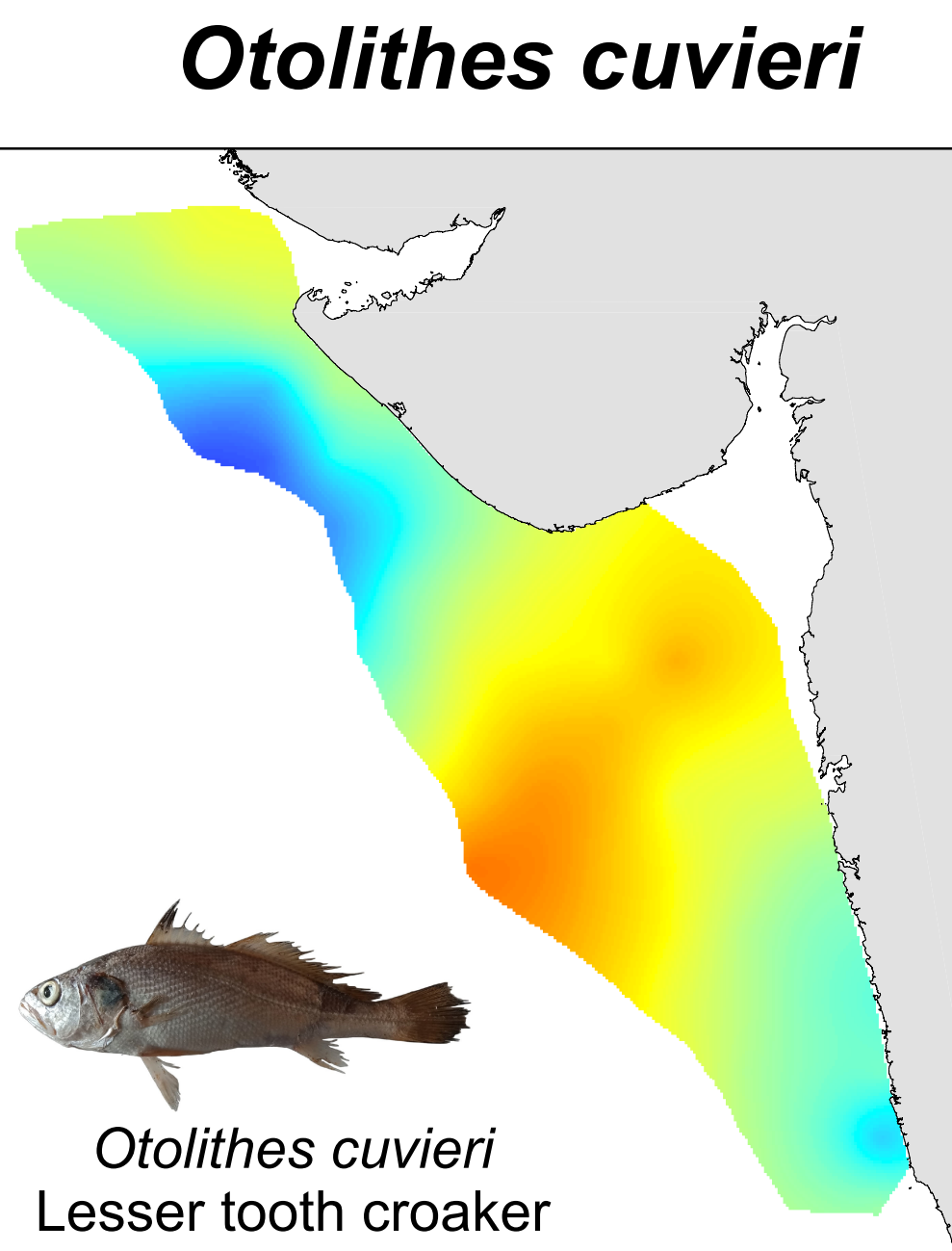
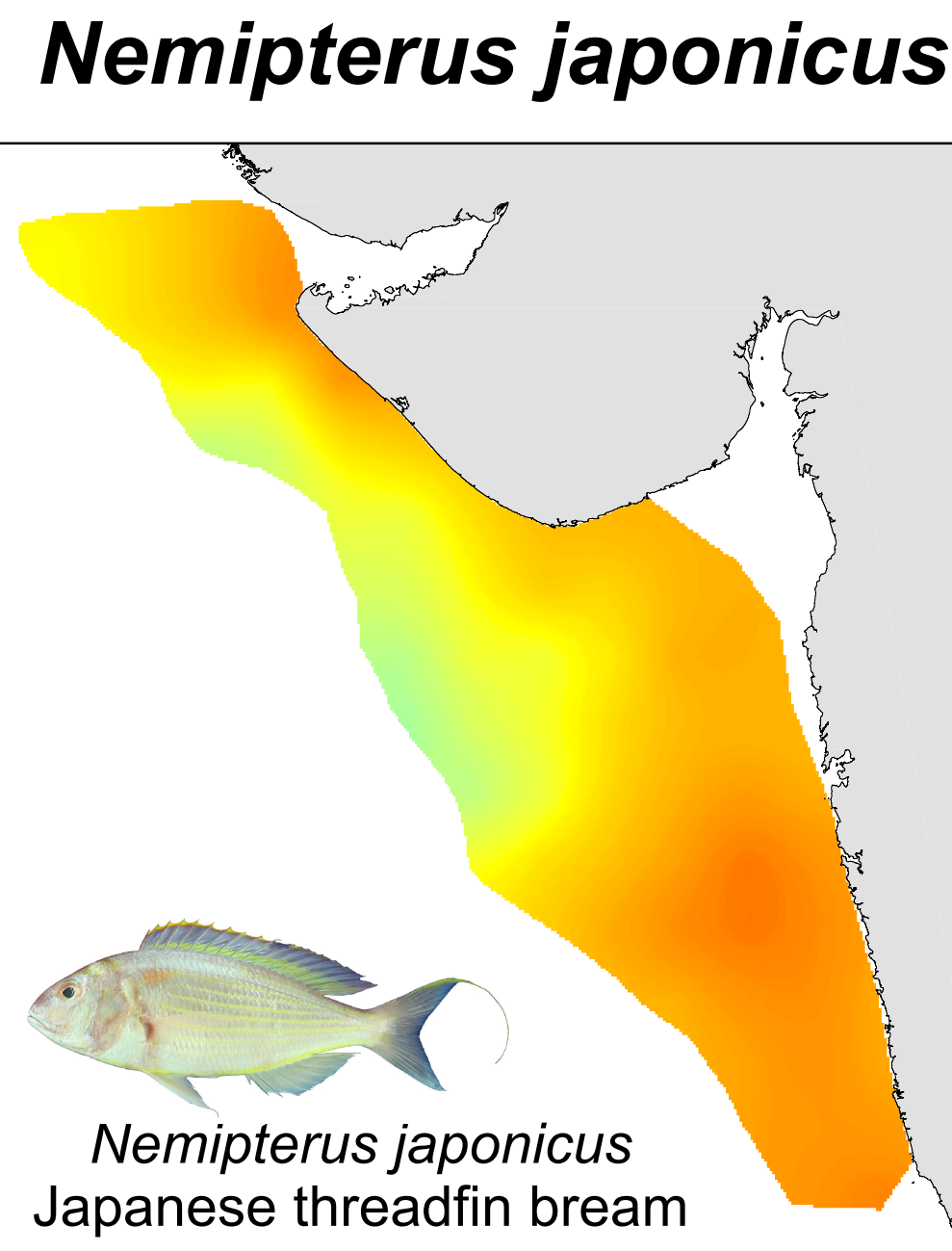
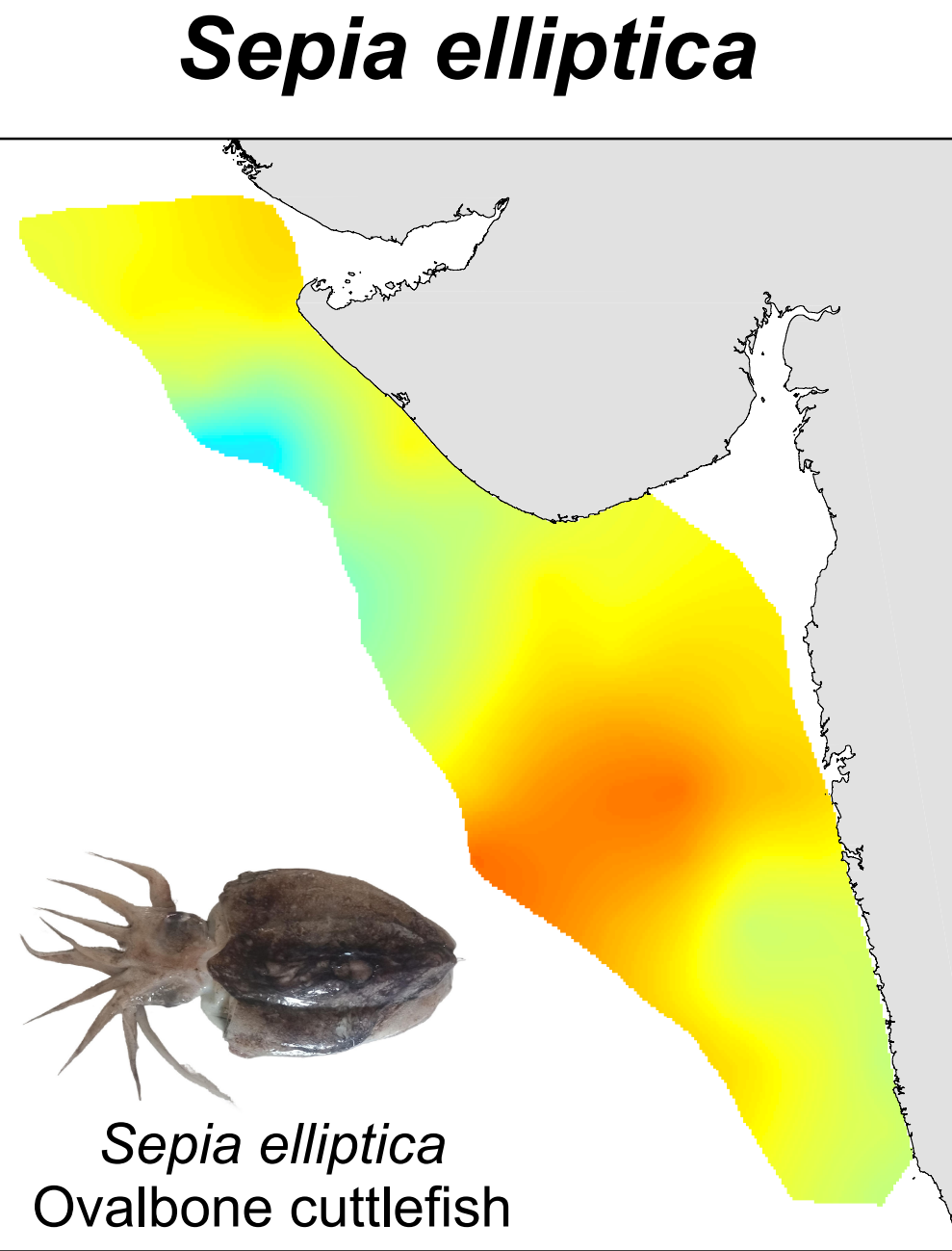
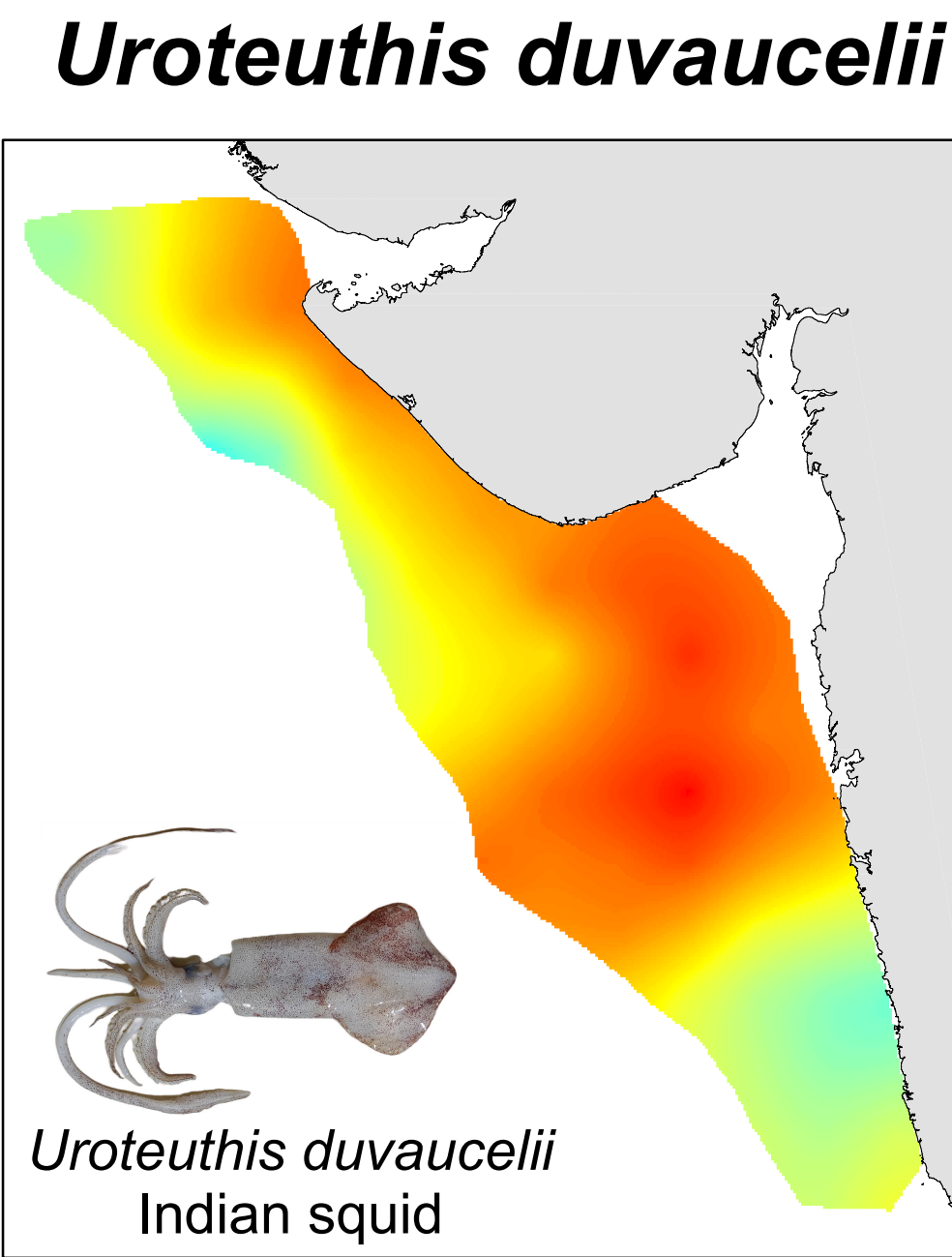
^aICAR-Central Marine Fisheries research Institute, Kochi, India; ^bICAR-Central Institute of Fisheries Education, Mumbai, India
^cSpace Applications Centre-ISRO, Ahmedabad, India



Map Information
Projection: UTM, Zone 42 N
Datum: WGS 1984
Unit: Meter
Catch rate is standardized catch of target fish using Catch Per Unit Effort (CPUE) in kilogram per hour (kg/h).
Bycatch rate is standardized catch of non-target fish using Catch Per Unit Effort (CPUE) in kilogram per hour (kg/h).
CPUE is transformed to natural logarithm (log-kg/h).
Data source: Logbook of multiday mid-water trawlers operating in the northwest coast of India during 2017-2019.



Bycatch species distribution



0 200 km

Bycatch rate (log-kg/h)

