

GEOLOGICAL AND GEOMORPHOLOGICAL MAP OF THE FOLAFÓTUR PENINSULA, WESTFJORDS, ICELAND

Geodiversity and Cultural Sites



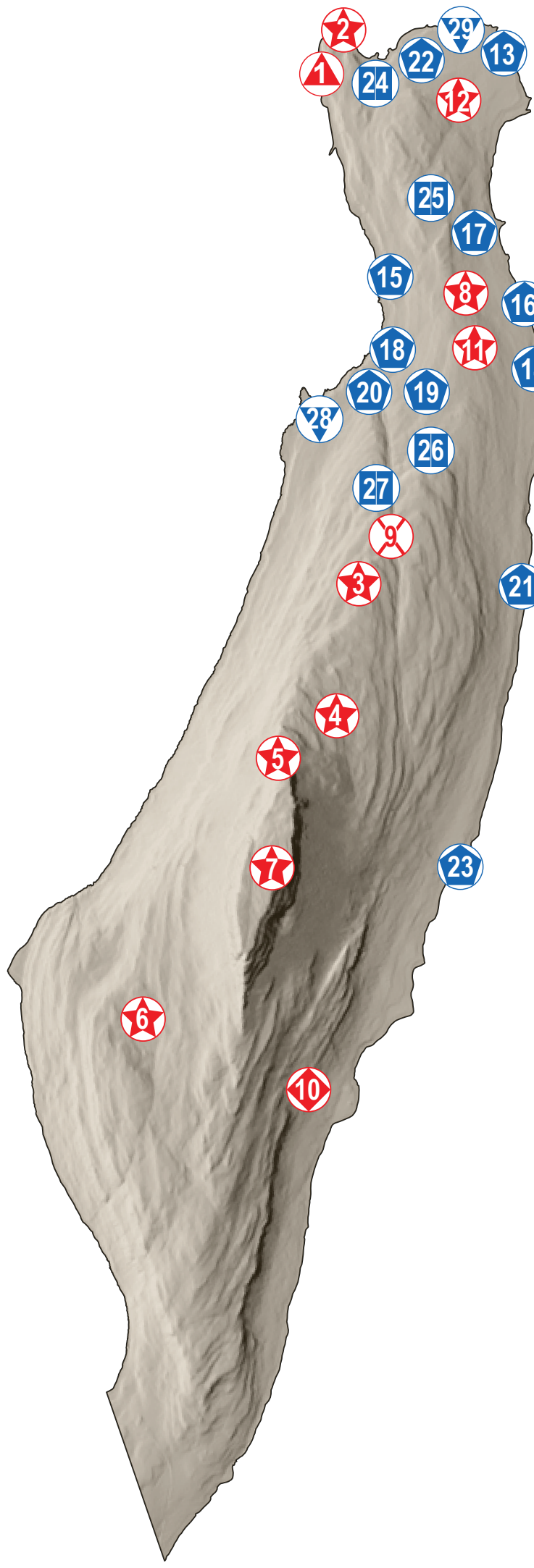
Alessandro Ellero¹, Björn Oddsson², Giuseppe Ottria¹

1. CNR - Istituto di Geoscienze e Georisorse, Pisa
2. Department of Earth Sciences-ETH Zurich, Sonneggstrasse 5, 8092 Zurich, Switzerland -
The Association Fofafotur Geopark - Nature Reserve and Cultural Heritage,
Laugavegur 47, 101 Reykjavik, Iceland

Topographic base redrawn from 10m resolution Digital Elevation Model (DEM) of Iceland-davailable from National Land Survey of Iceland (<https://www.lmi.is/en/>).
Coordinate System: WGS84 Pseudo-Mercator EPSG:3857.
All coordinates are in meters.
Local toponyms previously unpublished are compiled from descriptions documented in the archives of The Árni Magnússon Institute for Icelandic Studies, University of Iceland.
Original geological mapping made in July 2022.



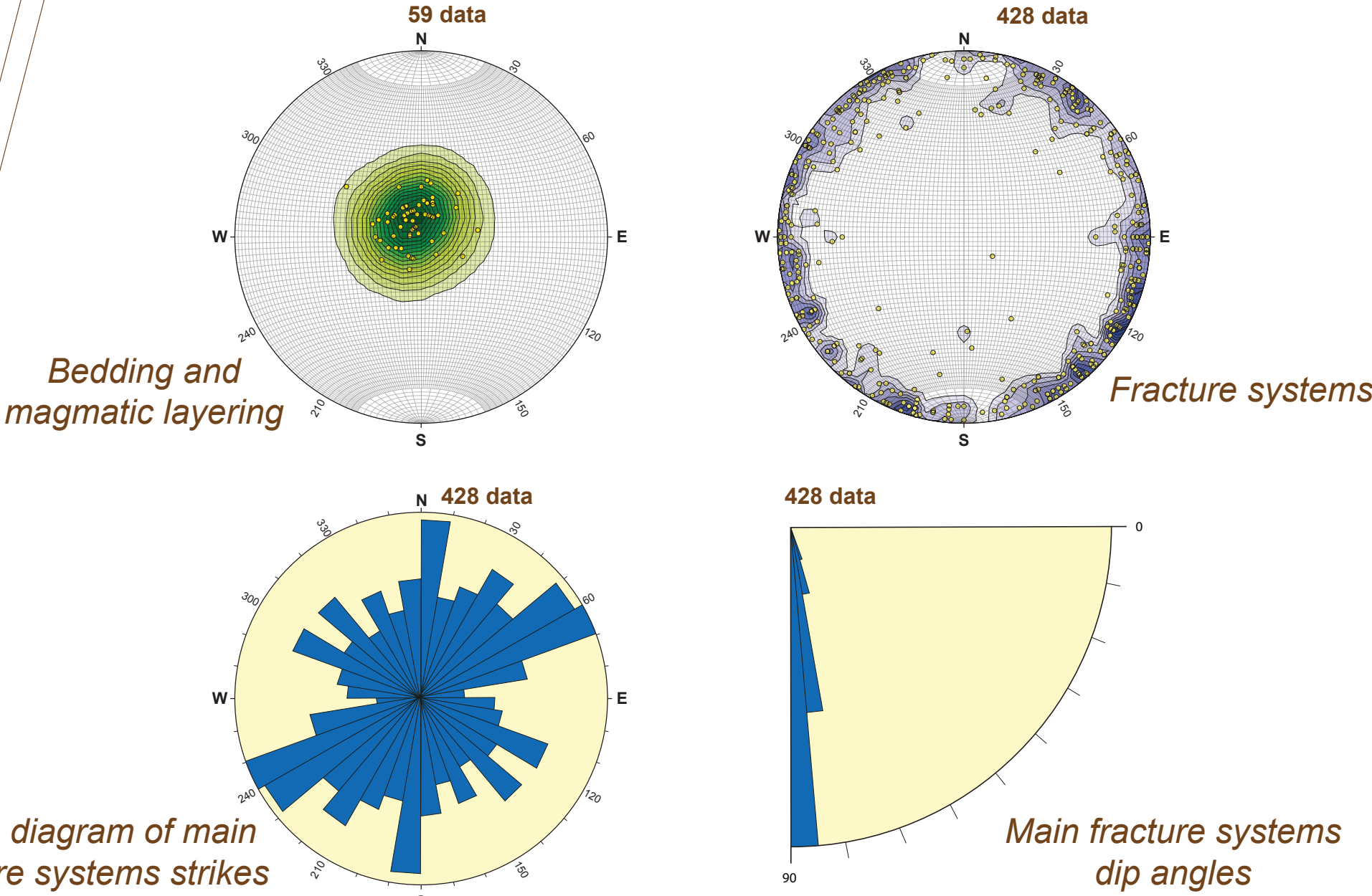
GEODIVERSITY AND CULTURAL SITES



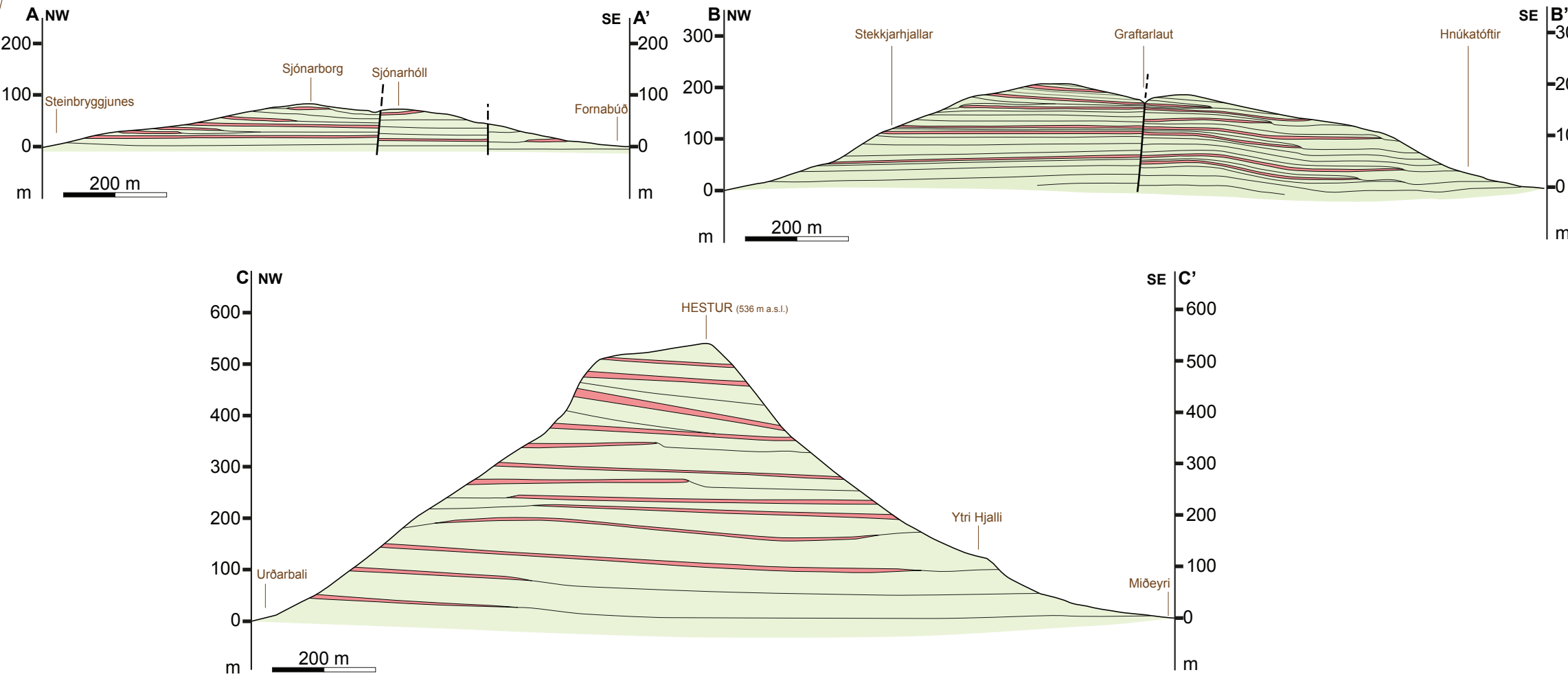
ID	GEODIVERSITY SITE	Primary Interest
1	Systratangi Basalt Dykes	▲ Magmatic
2	Sandvík Tafari	★ Geomorphological
3	Álfasiðta Boulders	★ Geomorphological
4	Álfavtn Lake	★ Geomorphological
5	Hásæti Tröllsins Natural Sculpture	★ Geomorphological
6	Faxadalsvatn Lake	★ Geomorphological
7	Hestur Ridge	★ Geomorphological
8	Fornubúðarvegur Boulder	★ Geomorphological
9	Álfalág Fault	✕ Tectonic
10	Nautahjalli Basalt Lava Flow and Sedimentary Deposits	◆ Lithological
11	Smérvörður Patterned Grounds	★ Geomorphological
12	Tjaldatangi Wave cut Platform	★ Geomorphological

ID	CULTURAL SITE	Primary Interest
13	Tjaldatangi Ruins	● Archaeological
14	Grjóthlað Ruins	● Archaeological
15	Fótatræðir Ruins	● Archaeological
16	Fornubúðarvegur Ruins	● Archaeological
17	Fornabúð Ruins	● Archaeological
18	Lókot Ruins	● Archaeological
19	Folakot Ruins	● Archaeological
20	Fótur Ruins	● Archaeological
21	Grænahlað Ruins	● Archaeological
22	Ljósavík Ruins	● Archaeological
23	Kolbeinseyri Ruins	● Archaeological
24	Ljósavík Beach	■ Literature
25	Sjónarhóll Viewpoint	■ Literature
26	Fótur Hills Viewpoint	■ Literature
27	Álfalág cleft of the helves	■ Literature
28	Langitangi Landing Place	▼ Historic
29	Einar Guðfinnsson's starting point	▼ Historic

STATISTICAL ANALYSIS OF MESOSCOPIC STRUCTURES (equal-area stereographic projection, lower hemisphere)



GEOLOGICAL CROSS-SECTIONS



LEGEND

Landforms and deposits

Fluvial and fluvio-glacial landforms and deposits

- Alluvial fan
- Lacustrine deposits

Slope landforms and deposits

- Talus deposits
- Colluvial fans

Glacial and periglacial landforms and deposits

- Blockfields
- Patterned ground
- Glacial tills

Marine landforms and deposits

- Modern beach deposits
- Marine terraces

Bedrock

- Basaltic dikes
- Sedimentary deposits (argillites, siltstones, sandstones and conglomerates)
- Tholeiitic and porphyritic basalts

Structural and Geomorphological Symbols

- Lithological boundary
- Fault
- Bedding
- Magmatic layering
- Fracture
- Striae on fault plane
- Boulder

Geological and cultural sites

Geodiversity sites

- ▲ Magmatic interest
- ✕ Tectonic interest
- ◆ Lithologic interest
- ★ Geomorphologic interest

Cultural sites

- Archaeological interest
- Literature interest
- ▼ Historic interest

A A' Cross-sections