

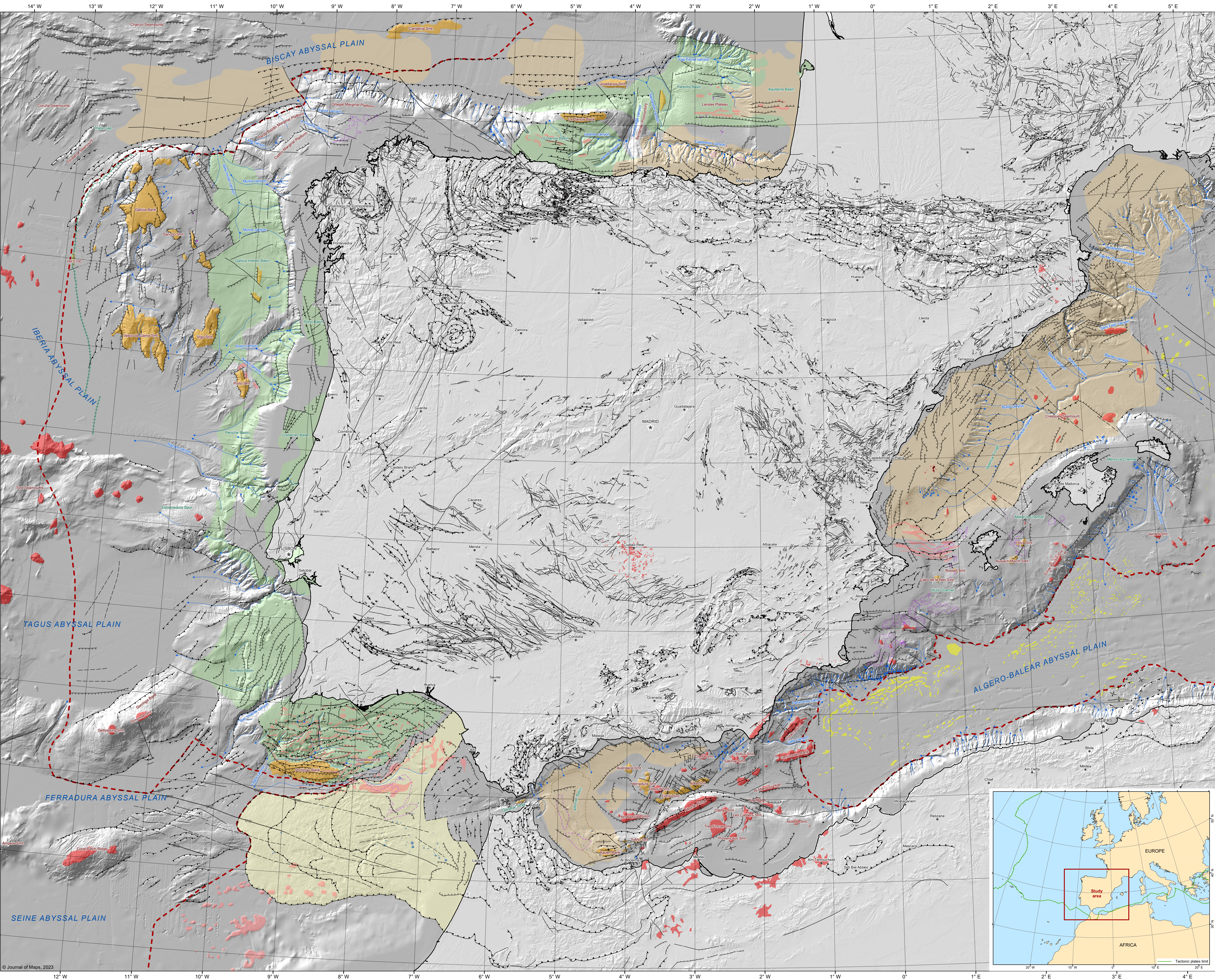
TECTONICS OF THE IBERIAN CONTINENTAL MARGINS AND ABYSSAL PLAINS

Authors: Druet, M.^{1,2}, Bohoyo, F.¹, Maestro, A.¹, Mink, S.¹, García-Senz, J.², Pedrera, A.², Rodríguez Fernández, L.R.¹

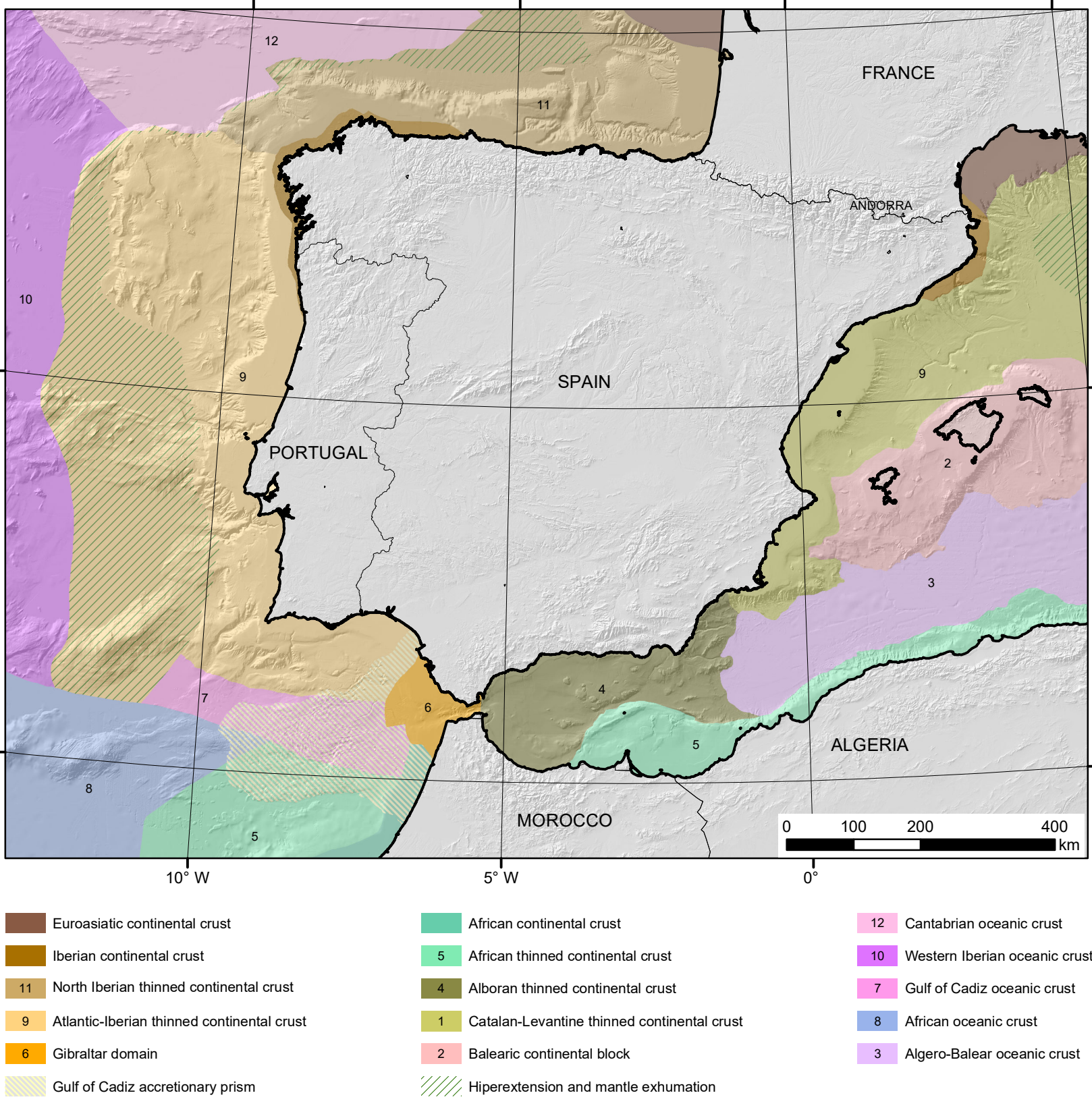
¹ Instituto Geológico y Minero de España (IGME-CSIC), C/ La Calera 1, Tres Cantos, 28760 - Madrid (Spain).

² Instituto Geológico y Minero de España (IGME-CSIC), Subdelegación de Gobierno, Pza. de España - Torre Norte, 41013 - Sevilla (Spain).

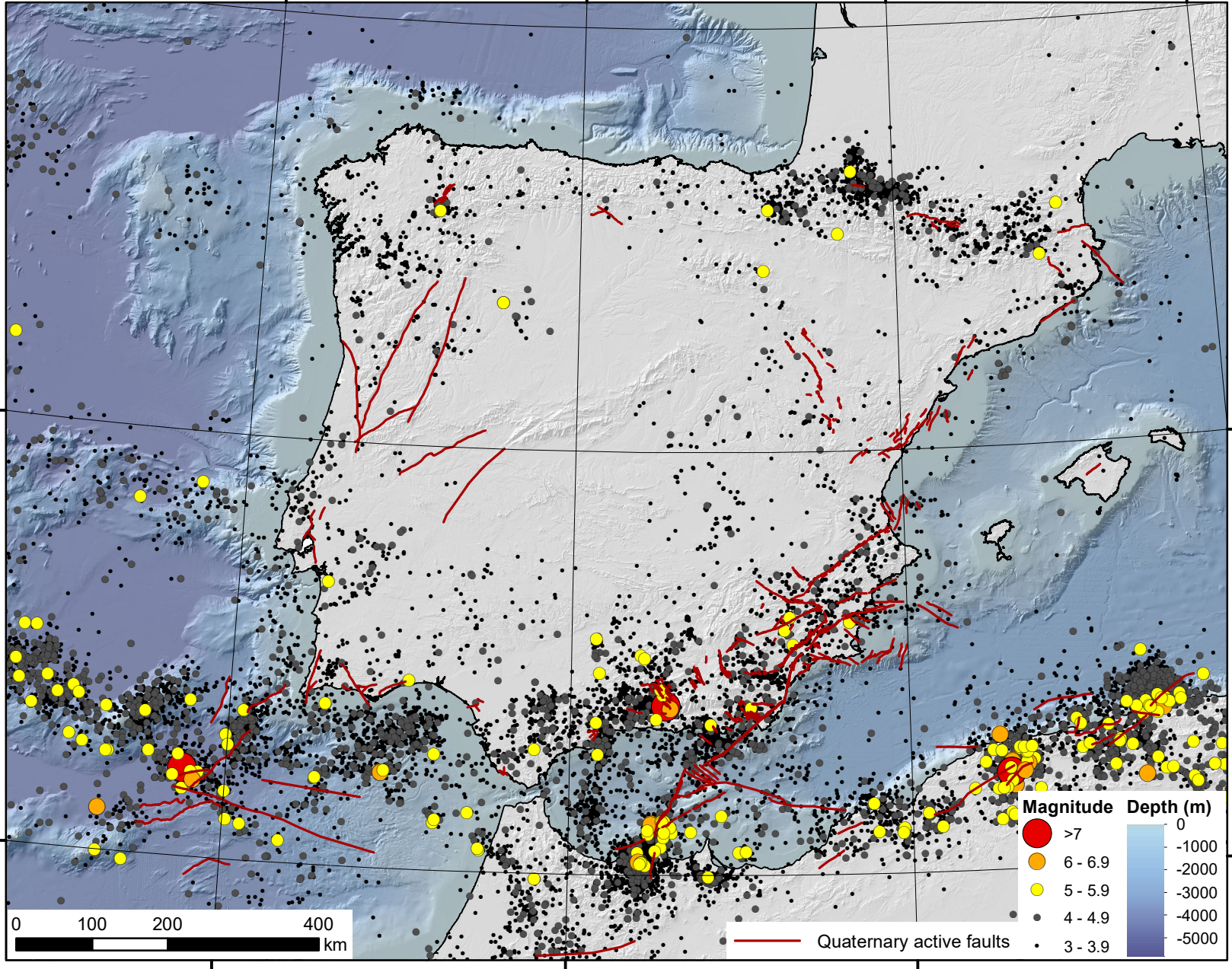
* Contact author: m.druet@csic.es



TECTONIC DOMAINS



SEISMICITY AND QUATERNARY ACTIVE FAULTS



Main Map Legend



Reference Scale: 1:1,750,000 Coordinate System: ETRS 1989 UTM Zone 30N

Shaded relief model from the digital elevation models compiled by the European Marine Observation and Data Network (EMODnet, EU) and the Shuttle Radar Topography Mission (NASA, USA). Illumination: Azimuth 315°, Altitude 45°.

This tectonic map is based on the compilation of previous works by other authors and the interpretation of the digital bathymetric model and other geophysical data. A complete list of the bibliographic references used to address this work is available as Supplemental material of this publication.

The offshore tectonic features mapped here are also available for download in ESRI Shapefile format as Supplemental material to this work, with additional information about their content and attributes.

This work was supported by the C.N. Instituto Geológico y Minero de España-CSIC via SEGYPAS and 3D Vasco Cantábrica own projects, and the Spanish Ministry of Science and Innovation projects SEASTORAGE (TED2021-129816B-I00) and ALGEMAR (PID2021-123825GB-I00).

