

Supplemental Material

Red Quantum-Dot Common Layer for Organic–Quantum-Dot Hybrid Light-Emitting Diodes for Full-Color Displays

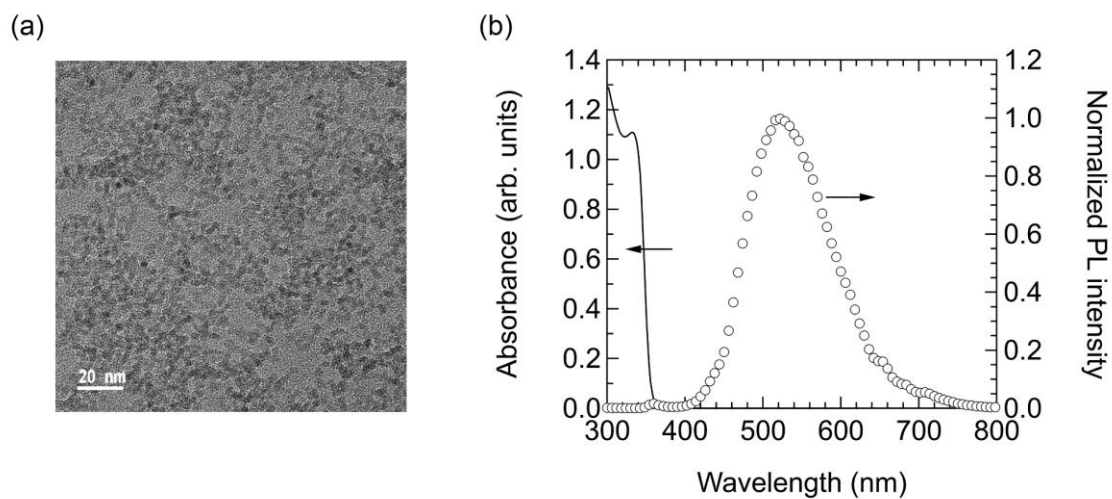


Figure S1. (a) TEM image of the ZMO nanoparticles and (b) their absorption and PL spectra dispersed in ethanol.

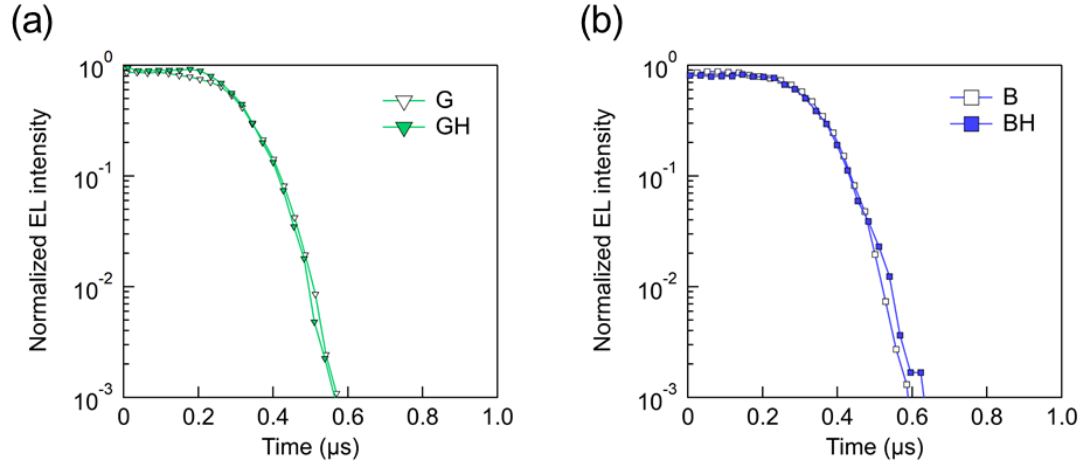


Figure S2. Transient EL decay curves of the devices (a) **G** and **GH**, and (b) **B** and **BH**.

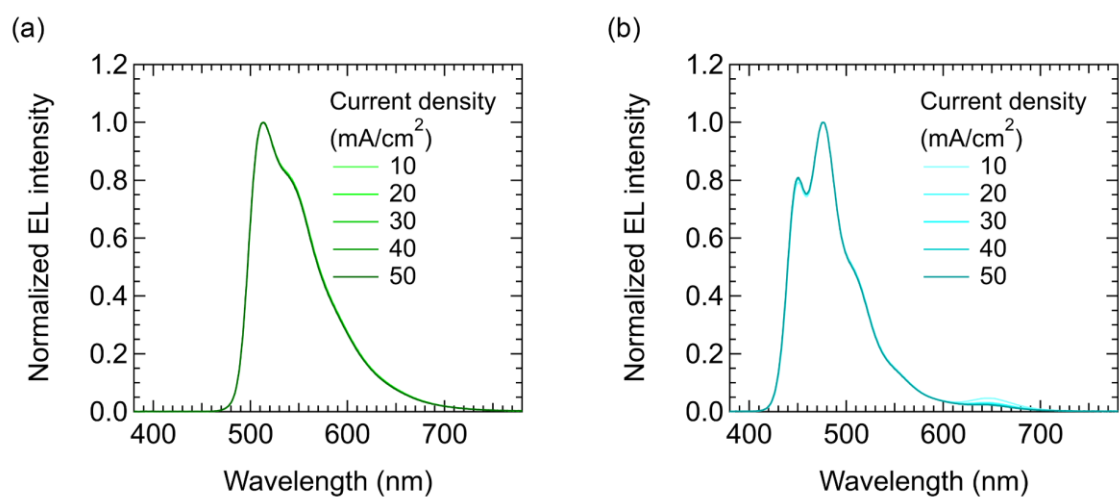


Figure S3. Normalized EL spectra of the devices (a) **GH** and (b) **BH** at various current density (10–50 mA/cm²).

Video S1. Demonstration of a full-color-emitting hybrid device in which the red, green, and blue sub-pixels are placed in parallel on a single substrate. Each pixel was biased with J of 1 mA/cm².