

# Main Map 1: Glacial geomorphology of terrestrial foreland of Nordenskiöldbreen, Adolfbukta, Svalbard

Marek W. Ewertowski<sup>1,2</sup>, David J.A. Evans<sup>1</sup>, David H. Roberts<sup>1</sup> and Aleksandra M. Tomczyk<sup>2,3</sup>

<sup>1</sup> Department of Geography, Durham University, Durham, United Kingdom  
<sup>2</sup> Faculty of Geographical and Geological Sciences, Adam Mickiewicz University, Poznań, Poland  
<sup>3</sup> Environment Department, University of York, Heslington, York, United Kingdom



**Surficial geology map units**  
**General**

- Glacier ice
- Sea
- Valley side bedrock

**Landform and structures**

- Moraine ridges and isolated hummocks
- Colluvial fan
- Alluvial fan
- Recent debris flow
  - debris flow scarp
  - debris flow channel
  - debris flow lobe
- Old debris flow

- Fluted till surface
- Debris covered glacier ice
- Ice-moulded bedrock
- Marine beach

**Moraine**

- Stable, high-relief moraine (probably still ice-cored)
- Degraded ice-cored moraine (no or low ice content)
- Recent, low-relief ice-cored moraine

**Ice-cored moraine structures**

- surface fractures and cracks related to dead-ice melting
- lineations (inherited glacial structures) in ice-cored moraine
- distinct collapsing edges
- moraine crests
- Escarpment
- Bedrock lineament

**Glacifluvial deposits**

- Active outwash
- Inactive outwash

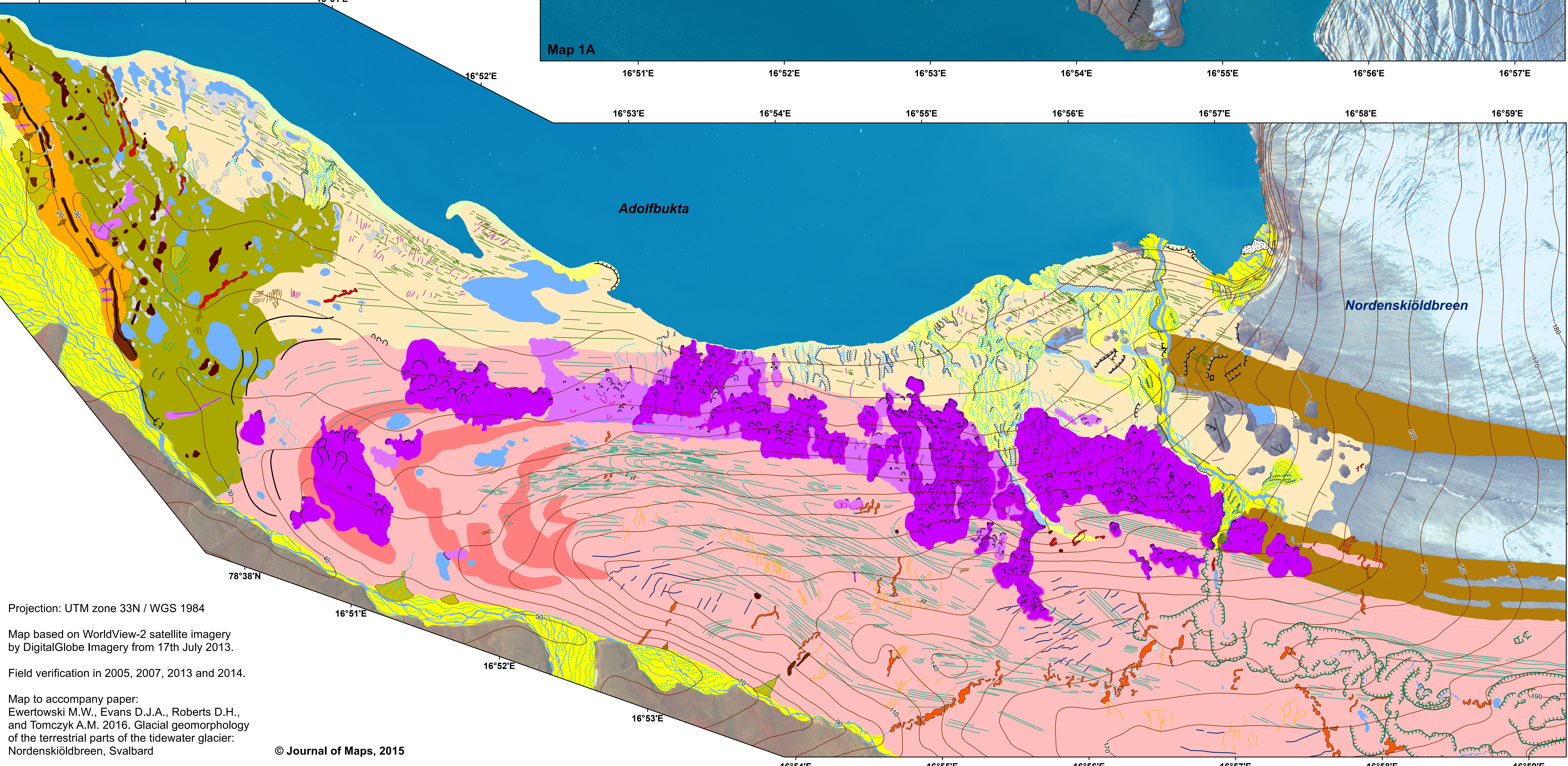
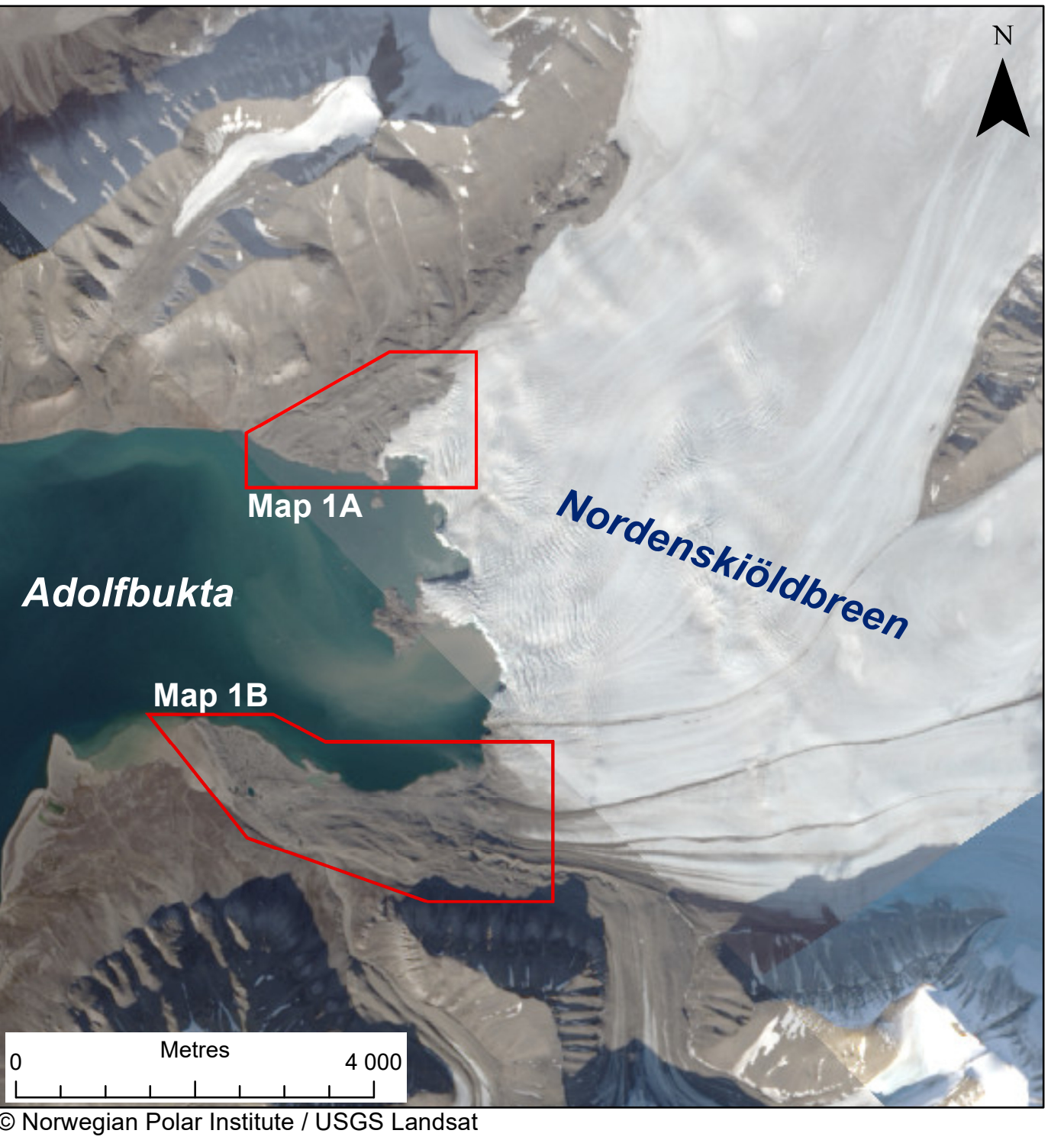
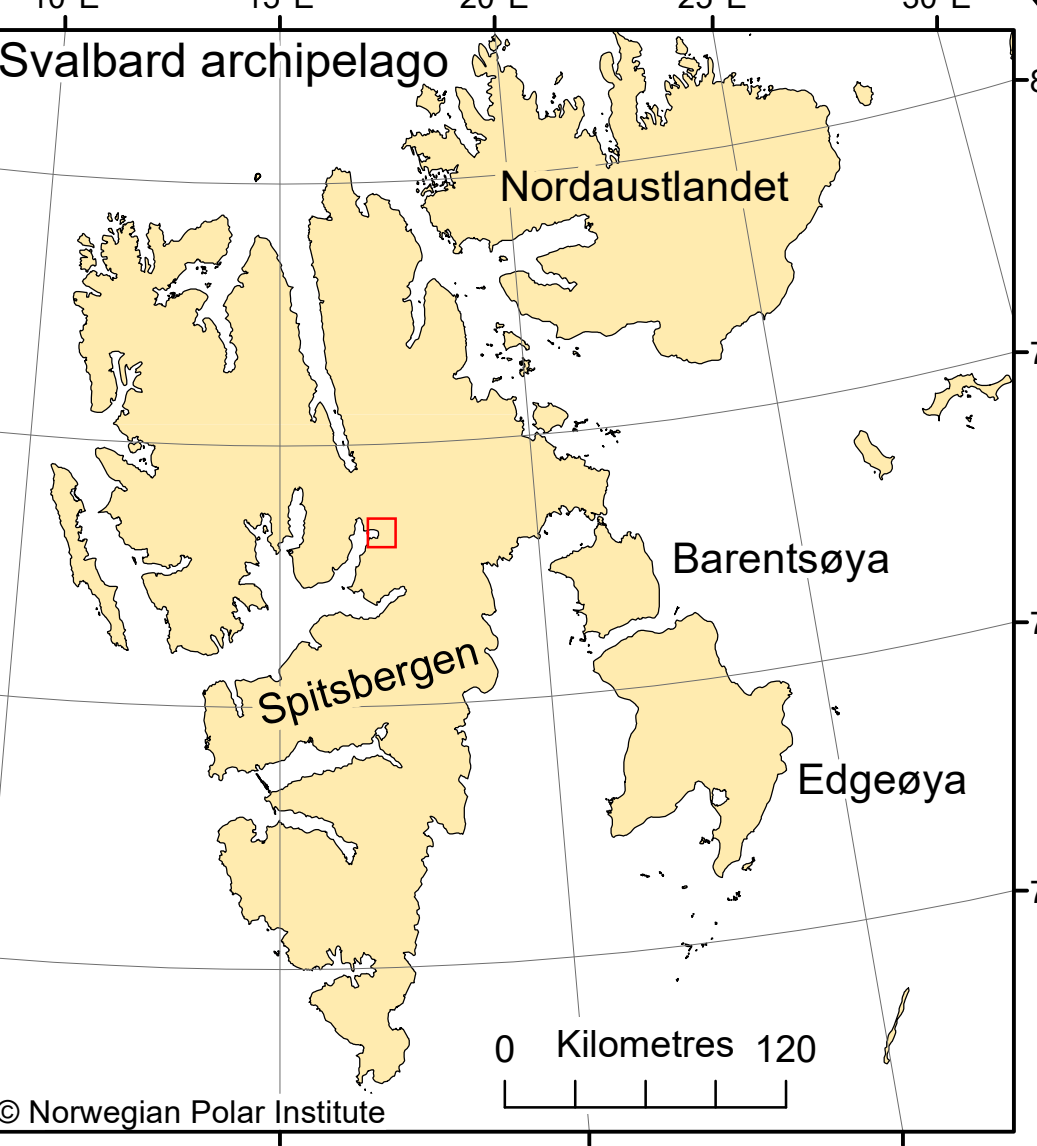
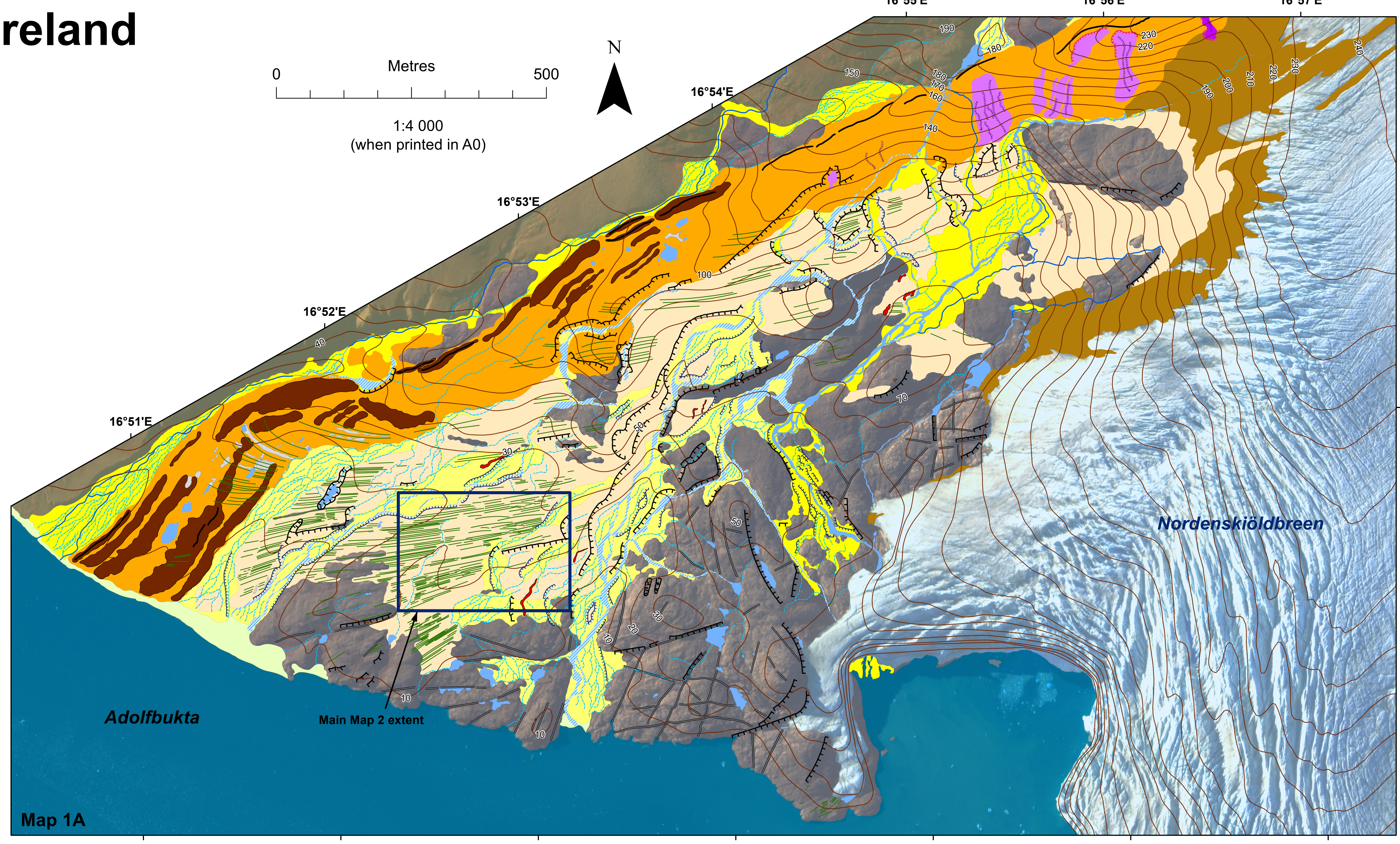
**Other features**

- Inland water (pond and active channel)
- Inactive channels
- Major terrace
- Depression
- Eskers
- Complex ridge networks (possible eskers and crevasse fills)
- Icing
- Flutings
- Geometrical ridges

- Overridden moraine

**Map symbols**

- Main Map 2 extent
- 10-meters contour



Projection: UTM zone 33N / WGS 1984  
Map based on WorldView-2 satellite imagery by DigitalGlobe Imagery from 17th July 2013.  
Field verification in 2005, 2007, 2013 and 2014.  
Map to accompany paper:  
Ewertowski M.W., Evans D.J.A., Roberts D.H., and Tomczyk A.M. 2016. Glacial geomorphology of the terrestrial parts of the tidewater glacier: Nordenskiöldbreen, Svalbard