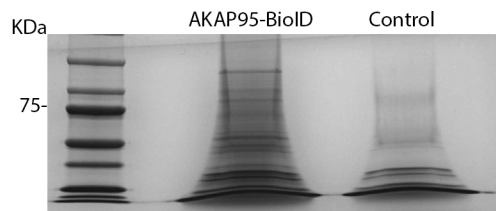
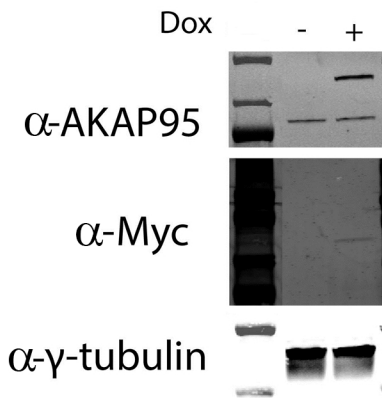


Supplementary Figure 2

A

B



C

P12270|TPR_HUMAN (100%), 267 289,3 Da
Nucleoprotein TPR OS=Homo sapiens GN=TPR PE=1 SV=3
76 exclusive unique peptides, 116 exclusive unique spectra, 184 total spectra, 850/2363 amino acids (36% coverage)

[illegible]