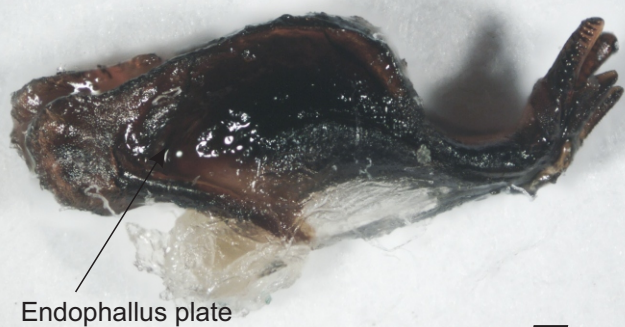
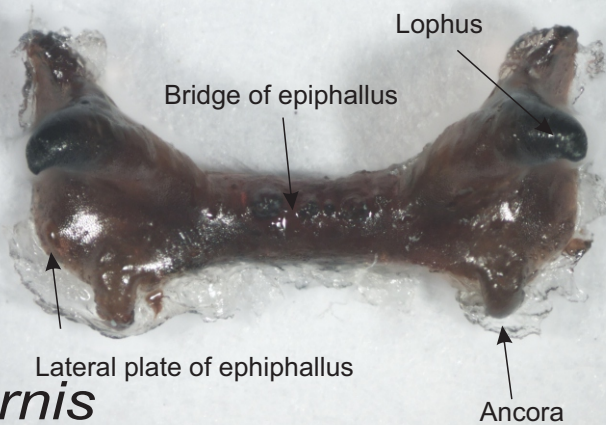


1



Endophallus plate

2



Bridge of epiphallus

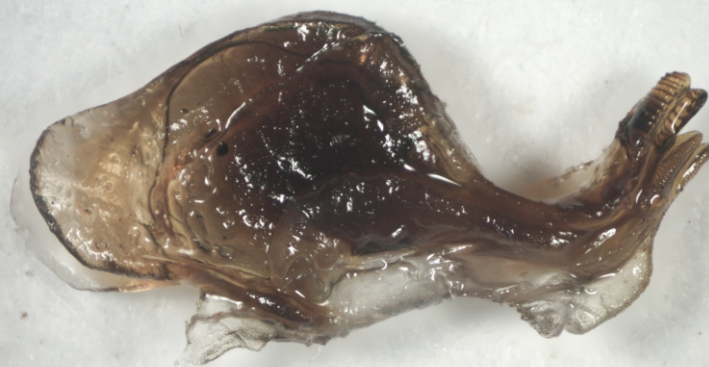
Lophus

Lateral plate of epiphallus

Ancora

*T. citricornis*

3



4

*T. gutturosa*

5

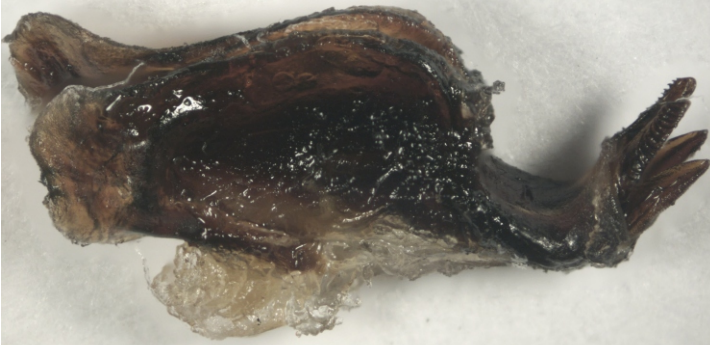


6

*T. varipennis*



7



8



*T. reticulata*

9

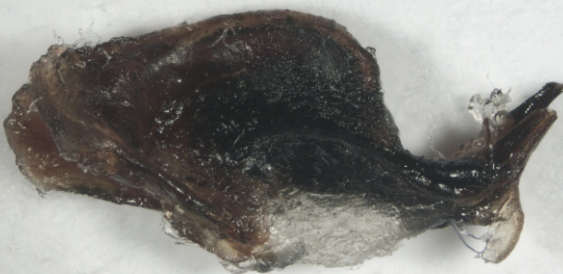


10



*T. auricornis*

11



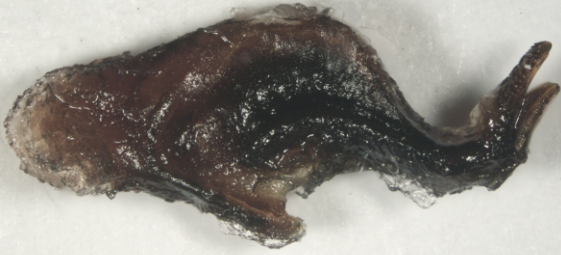
12



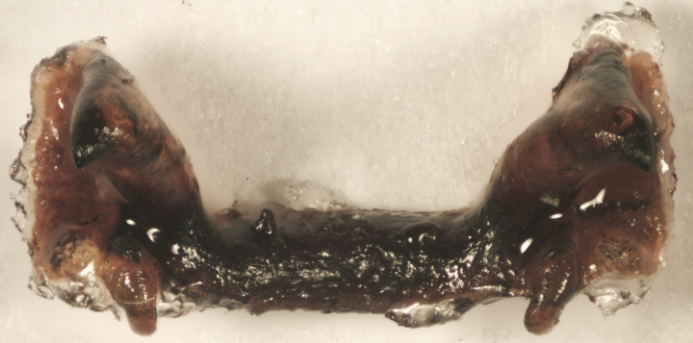
*T. centurio*



13

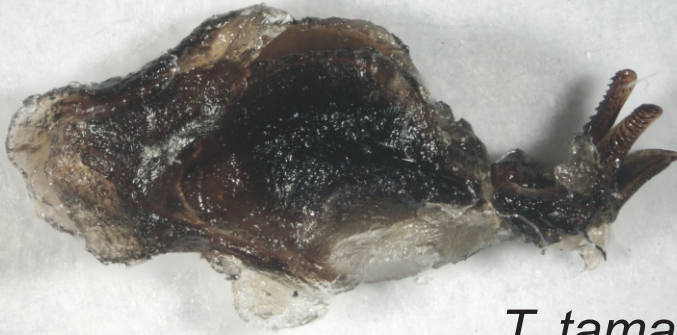


14

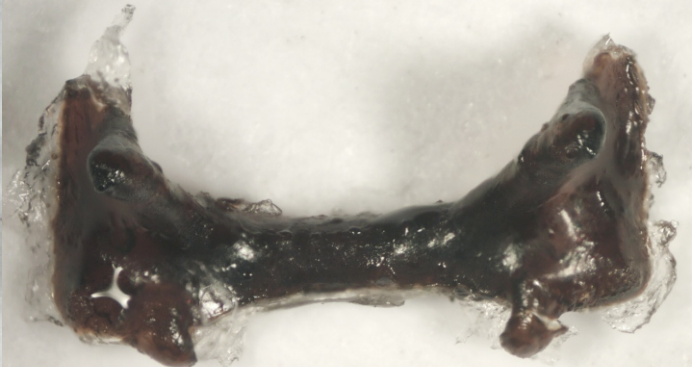


*T. eques*

15

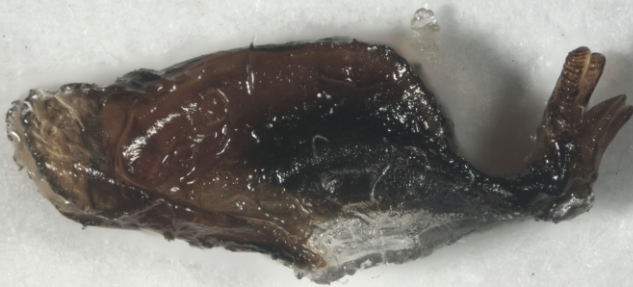


16

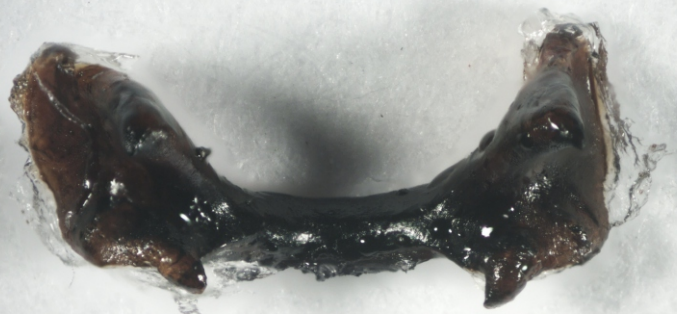


*T. tamaulipensis*

17



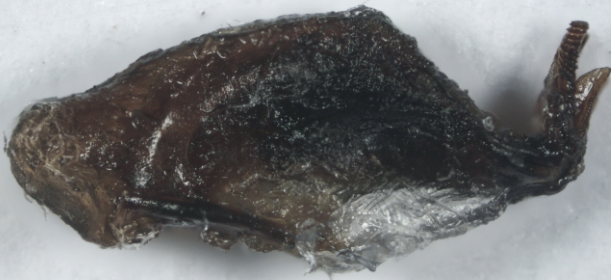
18



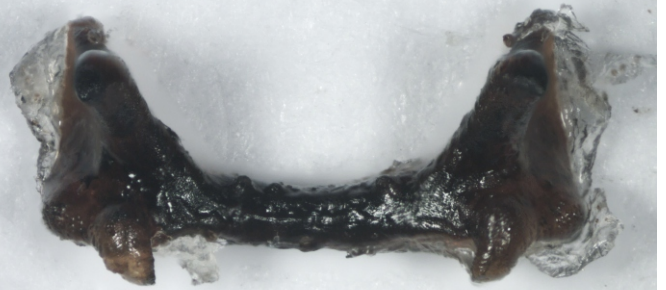
*T. stali*



19

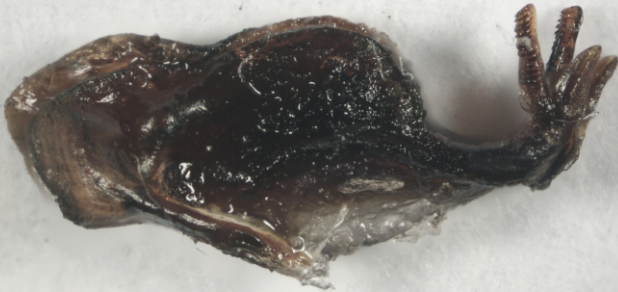


20



*T. picticornis*

21

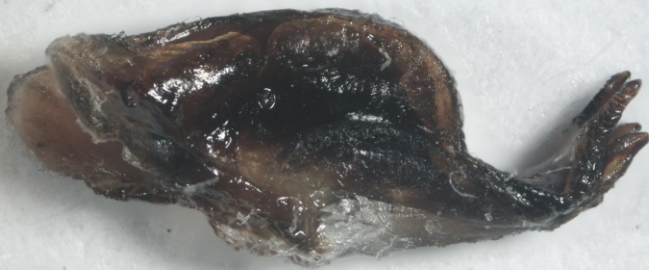


22



*T. obscura*

23



24



*R. microptera*