

Supplementary table S1. Actual and counterfactual changes in total disability-adjusted life years (DALYs) from rheumatoid arthritis, 1990 to 2015.

Location	Total DALYs, 1990	Expected from population growth scenario	Expected from population growth & aging scenario	Total DALYs, 2015	% change due to population growth	% change due to population aging	% change due to epidemiologic changes	Actual change
Global	4 004 636	5 566 205	6 703 593	6 333 406	39.0%	28.4%	−9.2%	58.2%
Nordic region	40 173	46 040	50 220	42 277	14.6%	10.4%	−19.8%	5.2%
Denmark	7286	8101	8980	9411	11.2%	12.1%	5.9%	29.2%
Finland	12 614	14 033	16 690	11 570	11.2%	21.1%	−40.6%	−8.3%
Greenland	50	49	73	87	−2.6%	48.1%	27.4%	72.9%
Iceland	240	307	371	326	28.1%	26.4%	−18.6%	35.9%
Norway	7256	8846	9109	6960	21.9%	3.6%	−29.6%	−4.1%
Sweden	12 727	14 598	15 386	13 923	14.7%	6.2%	−11.5%	9.4%

Figure 1. Age-standardized prevalence (95% UI) of rheumatoid arthritis by sex, 1990-2015

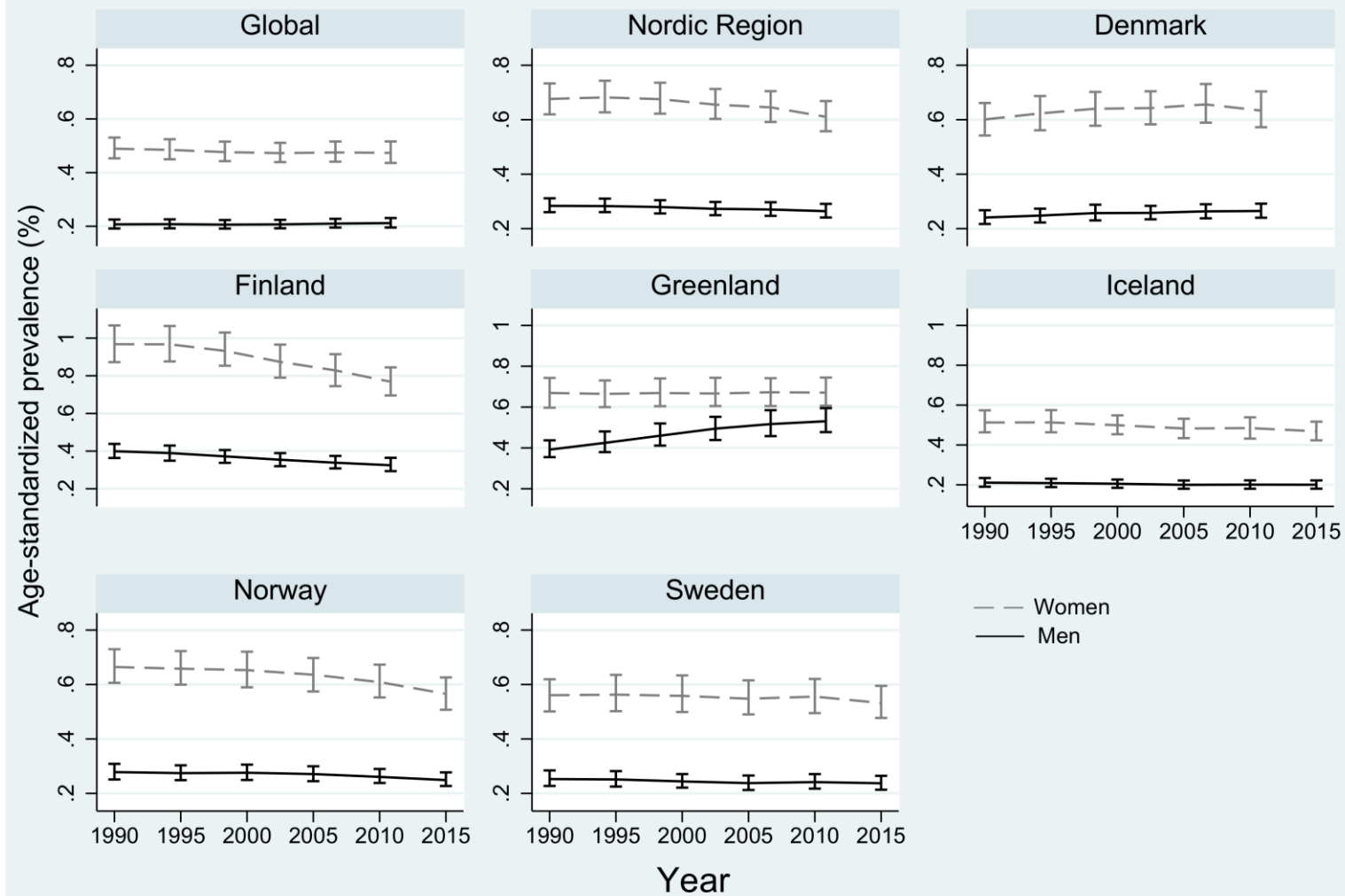


Figure 2. Age- and sex-specific prevalence (%) of rheumatoid arthritis in the Nordic region and the world, 2015.

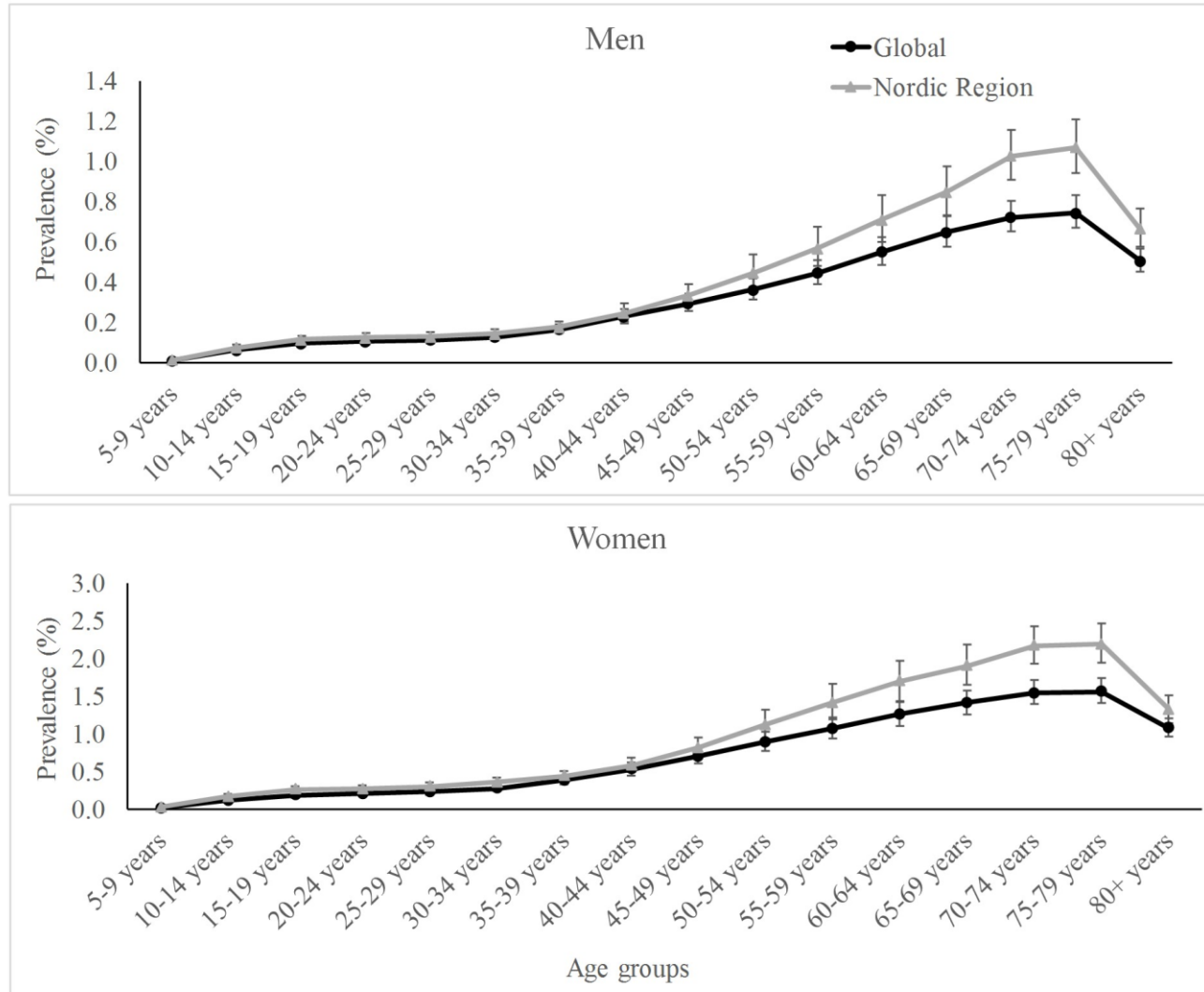


Figure 3. Age-standardized years life lost (YLL) from rheumatoid arthritis, 1990-2015

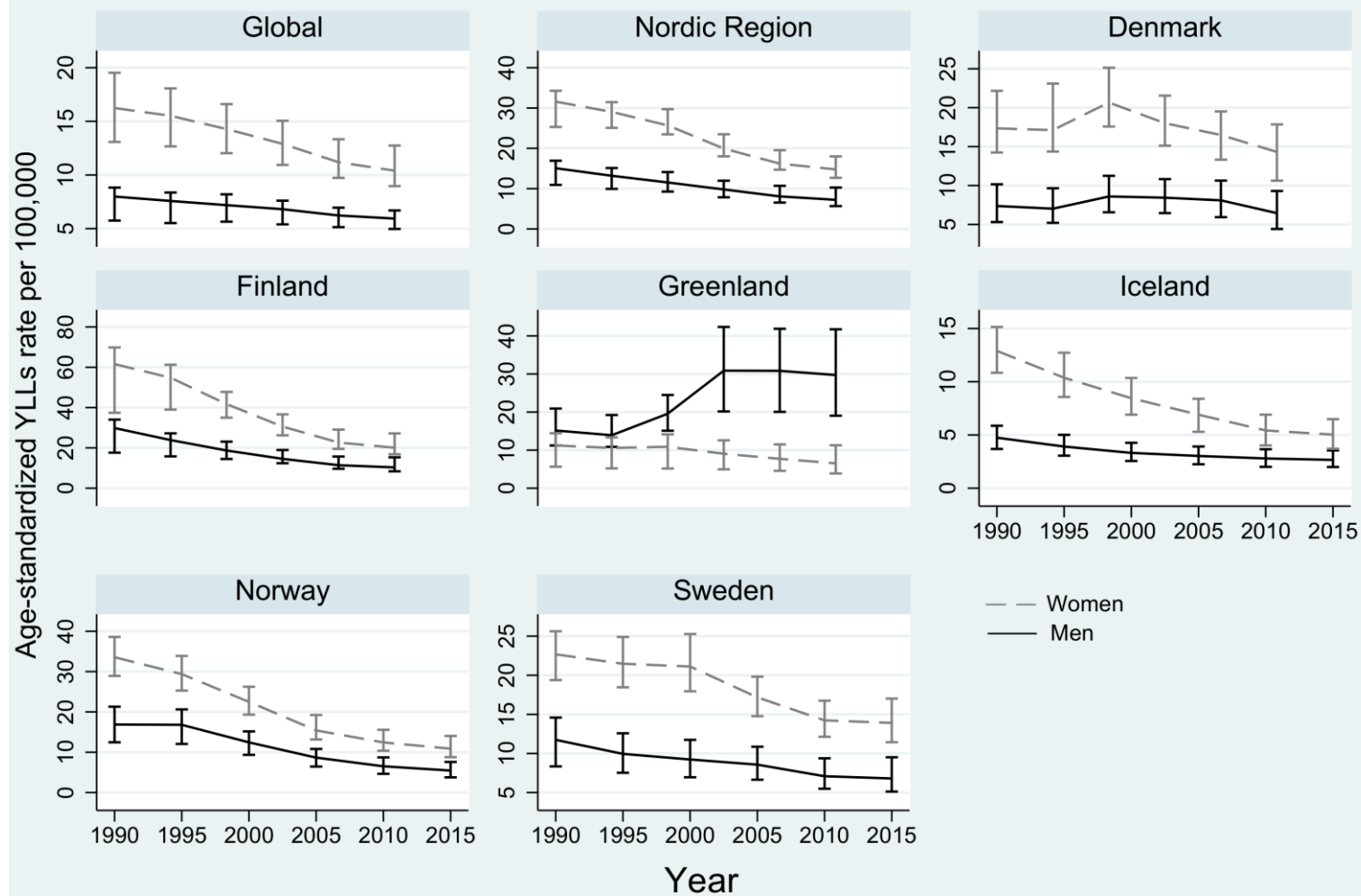


Figure 4. Burden of rheumatoid arthritis as a proportion of total years lived with disability (YLDs), 1990-2015

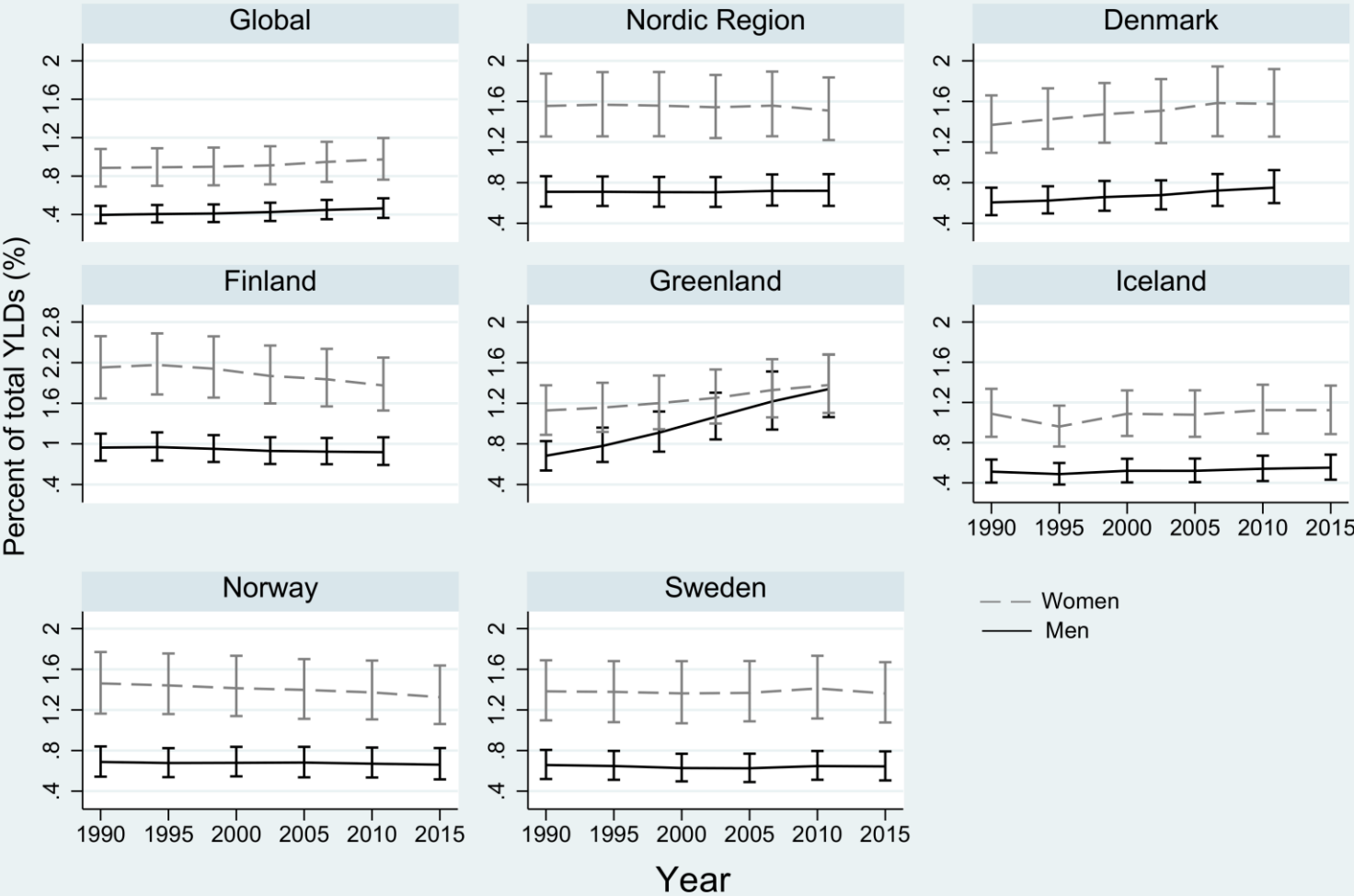


Figure 5. Age-standardized years lived with disability (YLDs) from rheumatoid arthritis, 1990-2015

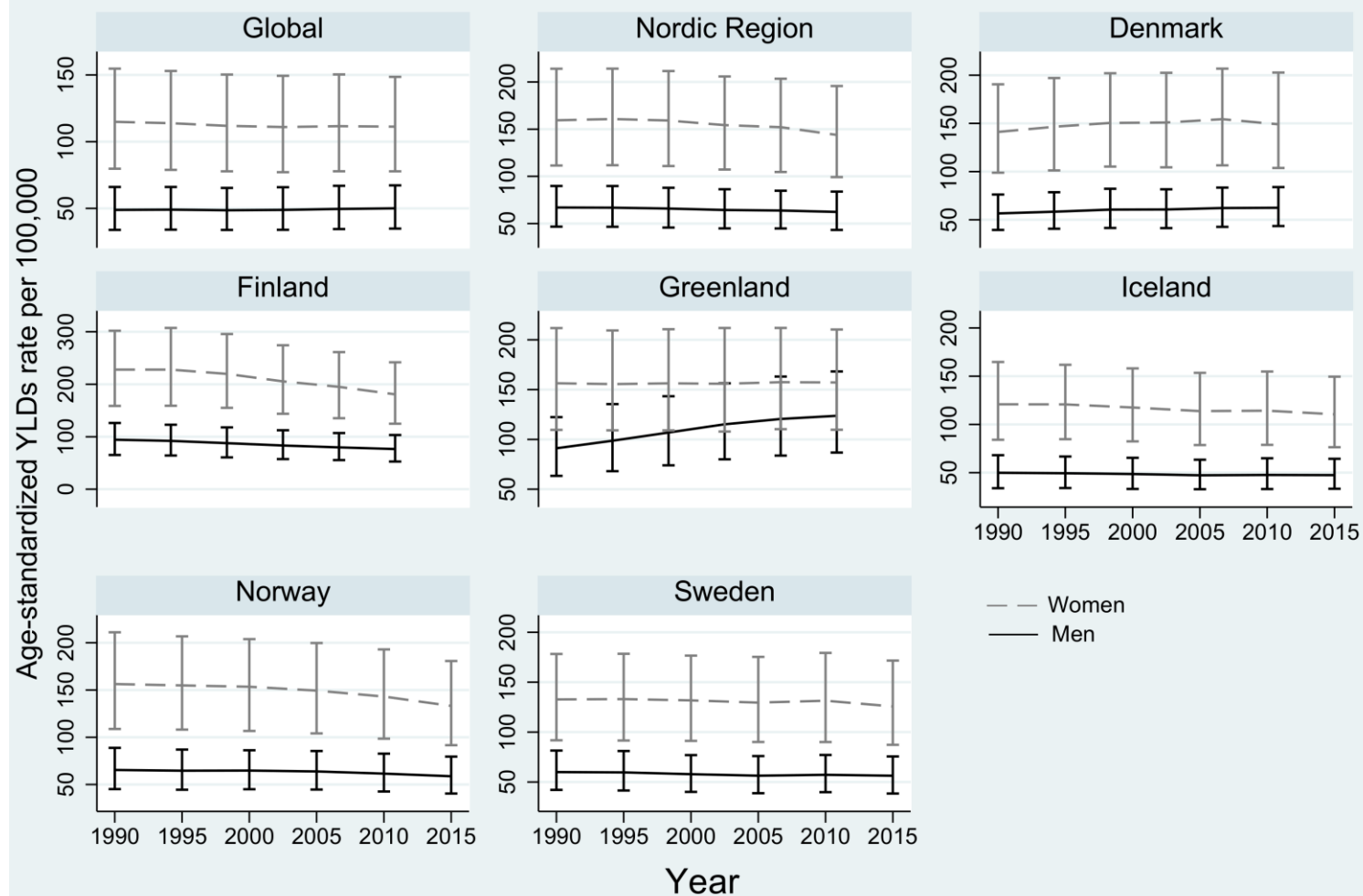


Figure 6. Burden of rheumatoid arthritis as a proportion of total disability-adjusted life years (DALYs), 1990-2015

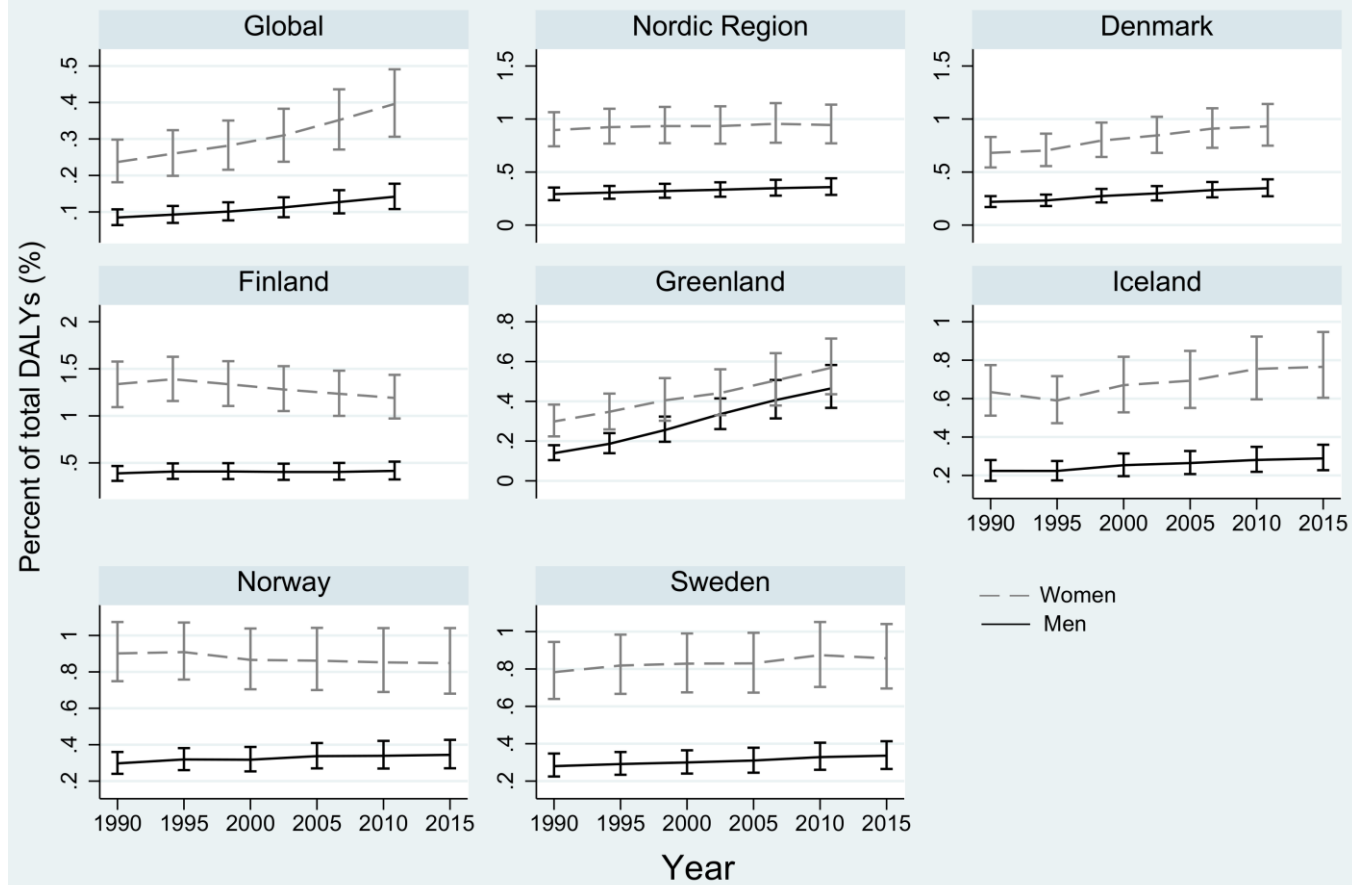


Figure 7. Age-standardized disability-adjusted life years (DALYs) from rheumatoid arthritis, 1990-2015

