

Report

Processing Report

11 July 2017



Survey Data

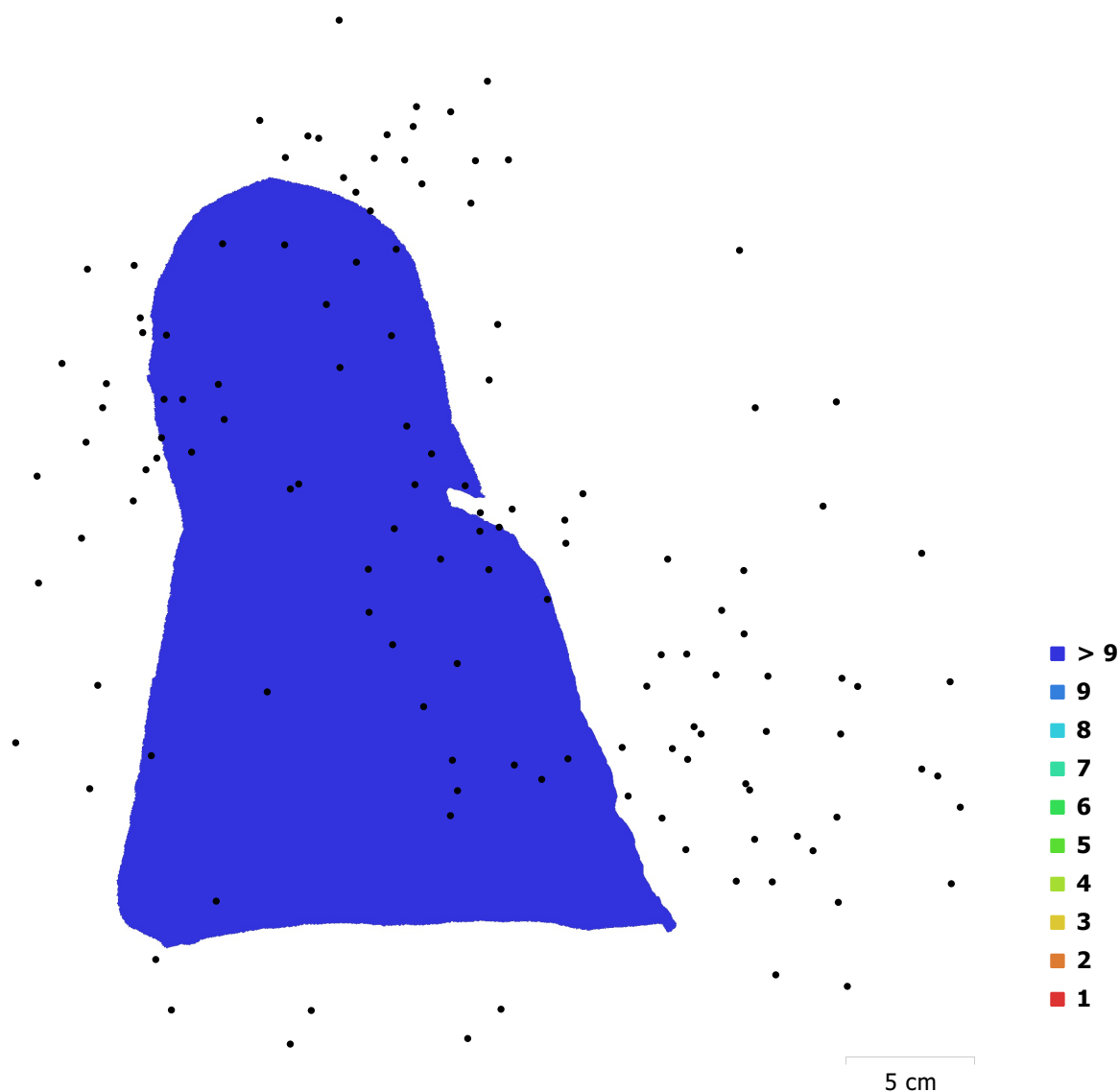


Fig. 1. Camera locations and image overlap.

Number of images:	133	Camera stations:	131
Flying altitude:	17 cm	Tie points:	233,518
Ground resolution:	0.0406 mm/pix	Projections:	953,049
Coverage area:	410 cm ²	Reprojection error:	1.15 pix

Camera Model	Resolution	Focal Length	Pixel Size	Precalibrated
DSC-RX100M2 (10.4 mm)	5472 x 3648	10.4 mm	2.44 x 2.44 μm	No

Table 1. Cameras.

Camera Calibration

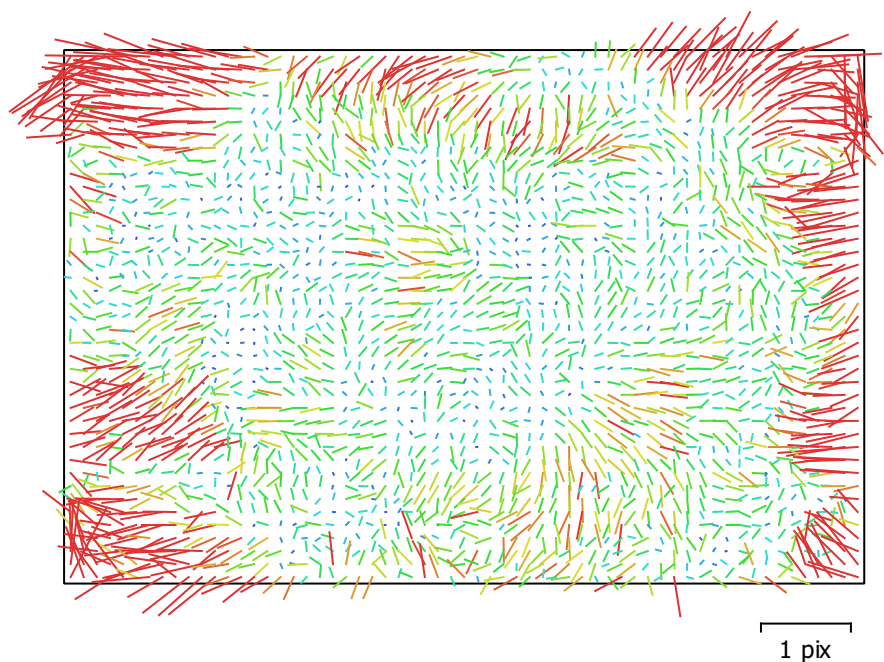


Fig. 2. Image residuals for DSC-RX100M2 (10.4 mm).

DSC-RX100M2 (10.4 mm)

133 images

Type	Resolution	Focal Length	Pixel Size
Frame	5472 x 3648	10.4 mm	2.44 x 2.44 μm
F:	4200.28		
Cx:	-7.71413	B1:	0
Cy:	13.5903	B2:	0
K1:	0.0100951	P1:	0
K2:	0.0259673	P2:	0
K3:	-0.046952	P3:	0
K4:	0	P4:	0

Scale Bars

Label	Distance (m)	Error (m)
42_32	0.19	1.48492e-14
Total		1.48492e-14

Table 2. Control scale bars.

Digital Elevation Model

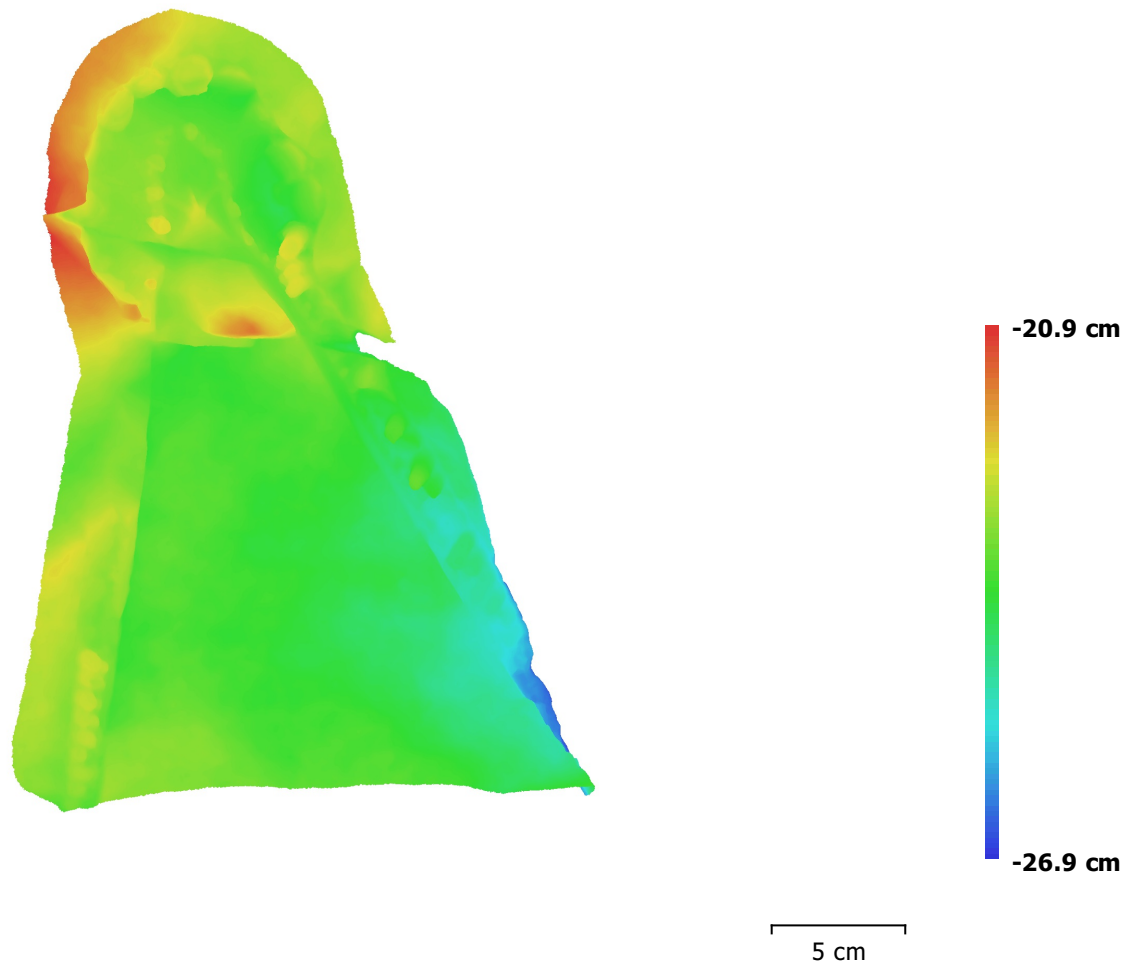


Fig. 3. Reconstructed digital elevation model.

Resolution: unknown

Point density: unknown

Processing Parameters

General

Cameras	133
Aligned cameras	131
Markers	2
Scale bars	1
Coordinate system	Local Coordinates (m)
Rotation angles	Yaw, Pitch, Roll

Point Cloud

Points	233,518 of 349,360
Reprojection error	1.15286 (3.49424 max)
Effective overlap	4.16461

Alignment parameters

Accuracy	High
Generic preselection	No
Reference preselection	No
Key point limit	400,000
Tie point limit	10,000
Constrain features by mask	No
Matching time	2 hours 46 minutes
Alignment time	1 minutes 51 seconds

Model

Faces	299,999
Vertices	151,810
Texture	3,000 x 3,000, uint8

Reconstruction parameters

Surface type	Arbitrary
Source data	Dense
Interpolation	Enabled
Quality	High
Depth filtering	Aggressive
Face count	0
Processing time	19 minutes 53 seconds

Texturing parameters

Mapping mode	Generic
Blending mode	Average
Texture size	3,000 x 3,000
UV mapping time	10 seconds
Blending time	14 minutes 45 seconds

Software

Version	1.3.1 build 4030
Platform	Windows 64