

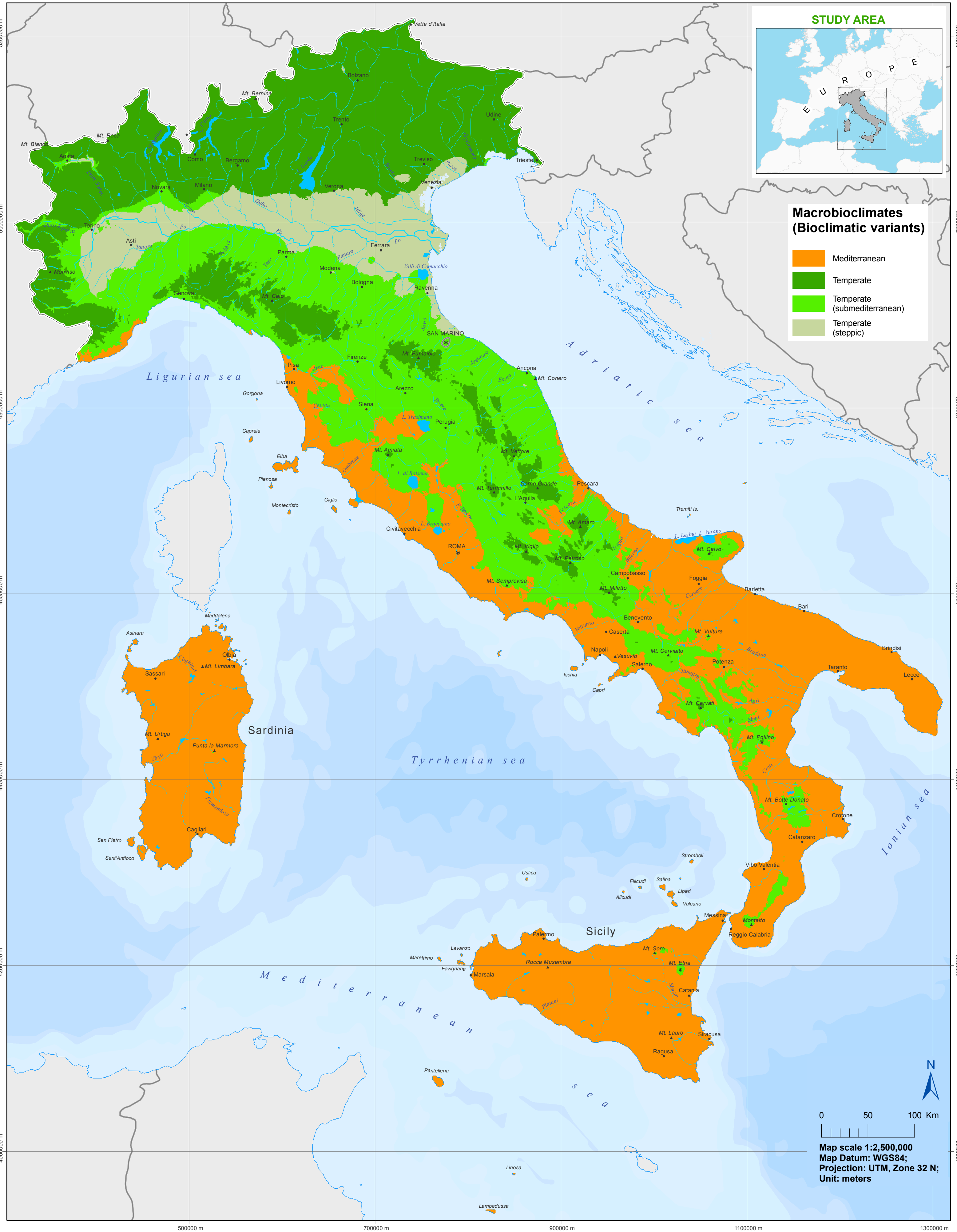
Bioclimates of Italy

Simone Pesaresi, Edoardo Biondi & Simona Casavecchia

Department of Agricultural, Food and Environmental Sciences, Marche Polytechnic University, 60131 Ancona, Italy - s.pesaresi@univpm.it

© Journal of Maps 2017

Macrobioclimates and Bioclimatic variants



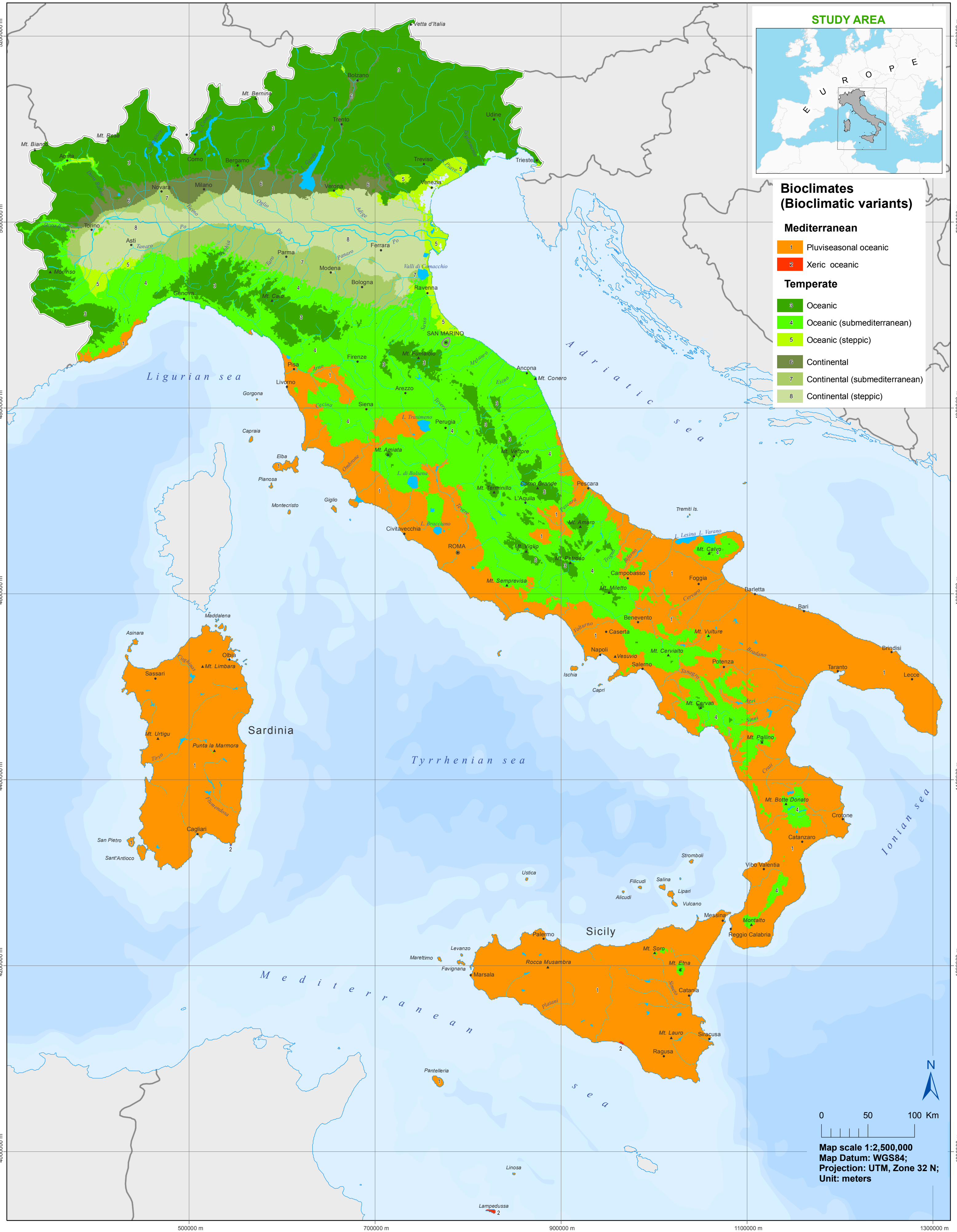
Bioclimates of Italy

Simone Pesaresi, Edoardo Biondi & Simona Casavecchia

Department of Agricultural, Food and Environmental Sciences, Marche Polytechnic University, 60131 Ancona, Italy - s.pesaresi@univpm.it

© Journal of Maps 2017

Bioclimates and Bioclimatic variants



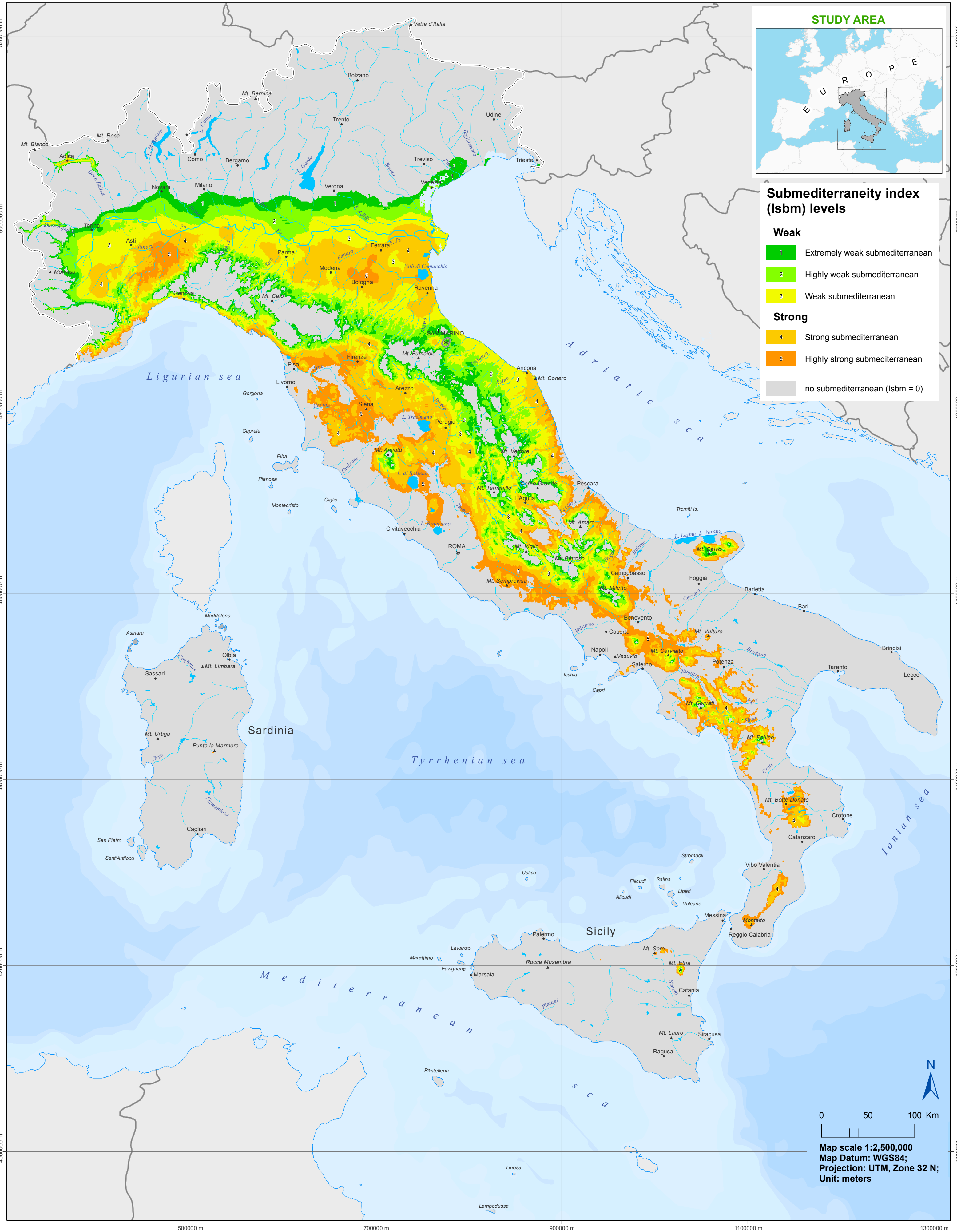
Bioclimates of Italy

Simone Pesaresi, Edoardo Biondi & Simona Casavecchia

Department of Agricultural, Food and Environmental Sciences, Marche Polytechnic University, 60131 Ancona, Italy - s.pesaresi@univpm.it

© Journal of Maps 2017

Submediterraneity index (Isbm)



Bioclimates of Italy

Simone Pesaresi, Edoardo Biondi & Simona Casavecchia

Department of Agricultural, Food and Environmental Sciences, Marche Polytechnic University, 60131 Ancona, Italy - s.pesaresi@univpm.it

© Journal of Maps 2017

Continentality



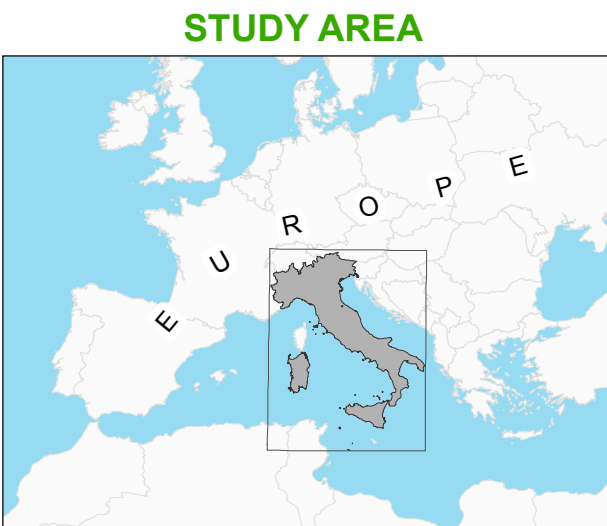
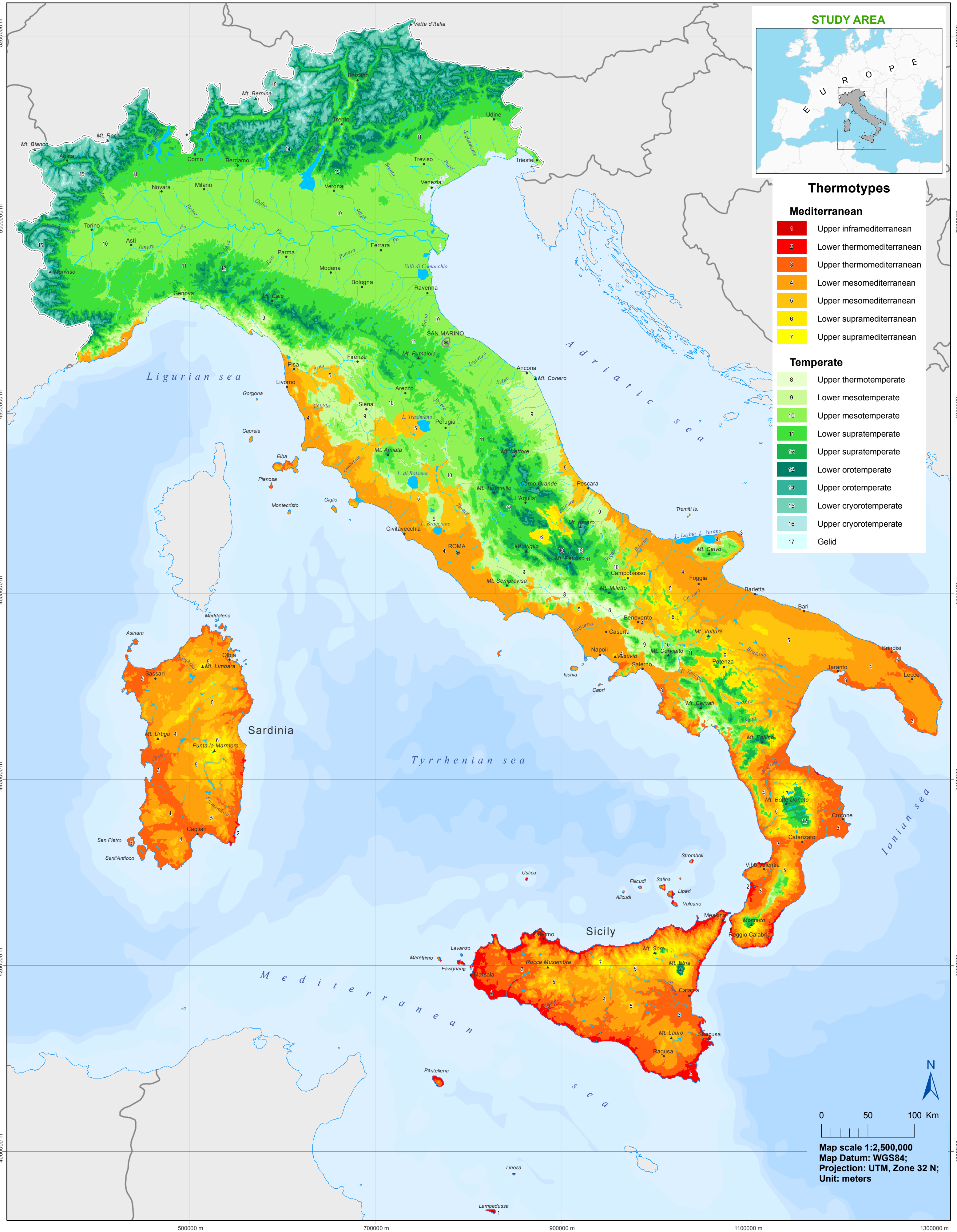
Bioclimates of Italy

Simone Pesaresi, Edoardo Biondi & Simona Casavecchia

Department of Agricultural, Food and Environmental Sciences, Marche Polytechnic University, 60131 Ancona, Italy - s.pesaresi@univpm.it

© Journal of Maps 2017

Thermotypes



Thermotypes

Mediterranean

- 1 Upper inframediterranean
- 2 Lower thermomediterranean
- 3 Upper thermomediterranean
- 4 Lower mesomediterranean
- 5 Upper mesomediterranean
- 6 Lower supramediterranean
- 7 Upper supramediterranean

Temperate

- 8 Upper thermotemperate
- 9 Lower mesotemperate
- 10 Upper mesotemperate
- 11 Lower supraterperate
- 12 Upper supraterperate
- 13 Lower orotemperate
- 14 Upper orotemperate
- 15 Lower cryorotemperate
- 16 Upper cryorotemperate
- 17 Gelid

0 50 100 Km

Map scale 1:2,500,000
Map Datum: WGS84;
Projection: UTM, Zone 32 N;
Unit: meters

Bioclimates of Italy

Simone Pesaresi, Edoardo Biondi & Simona Casavecchia

Department of Agricultural, Food and Environmental Sciences, Marche Polytechnic University, 60131 Ancona, Italy - s.pesaresi@univpm.it

© Journal of Maps 2017

Ombrotypes

