



UNIVERSITÀ DI PISA

# Geological map of Grande beach at São Francisco do Sul Island (Santa Catarina, Brazil)

Map scale: 1:50000

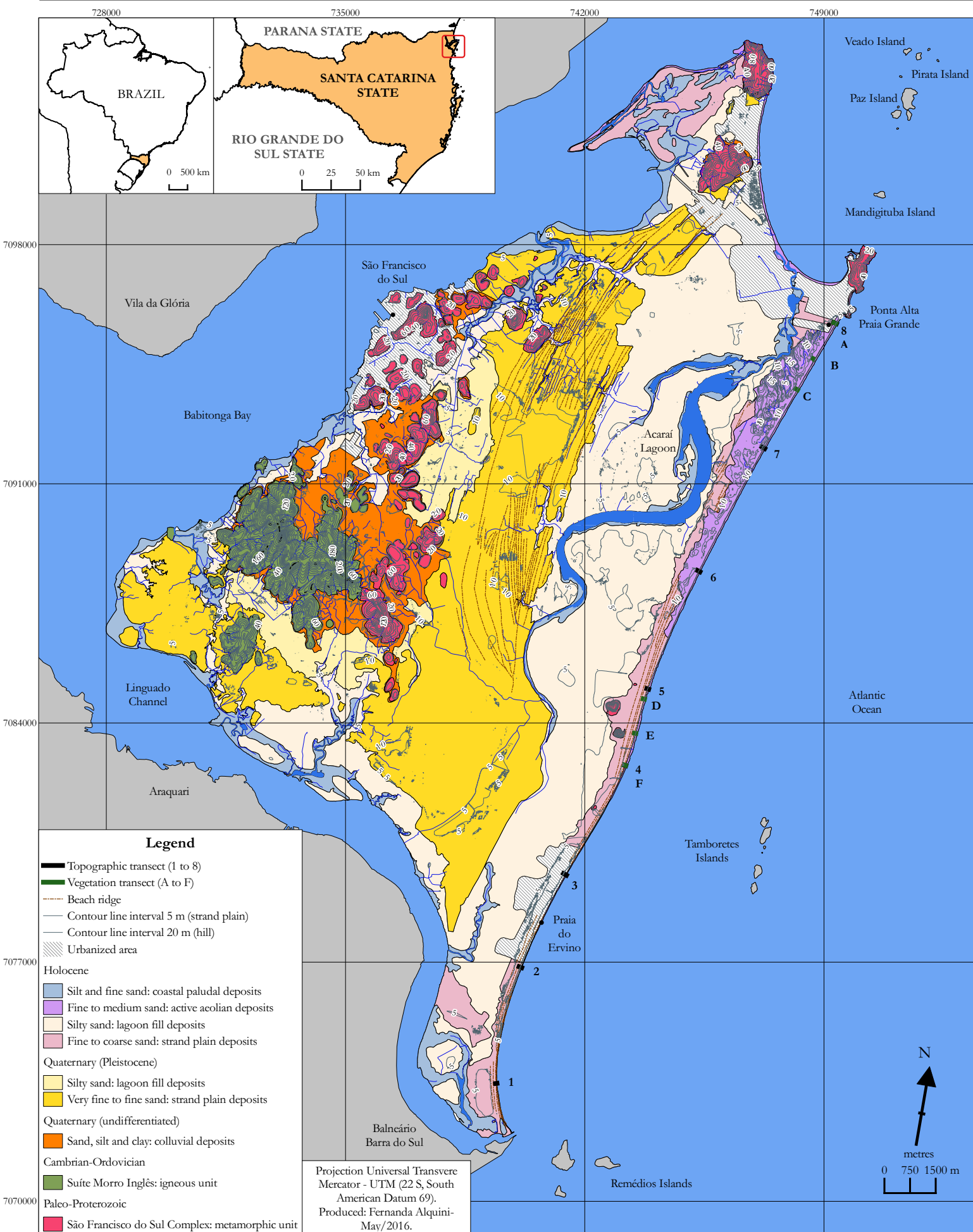
Alquini F. (1), Bertoni D.\* (1), Sarti G. (1), Vieira C. V. (2), Melo Júnior, J. C. F. (2)

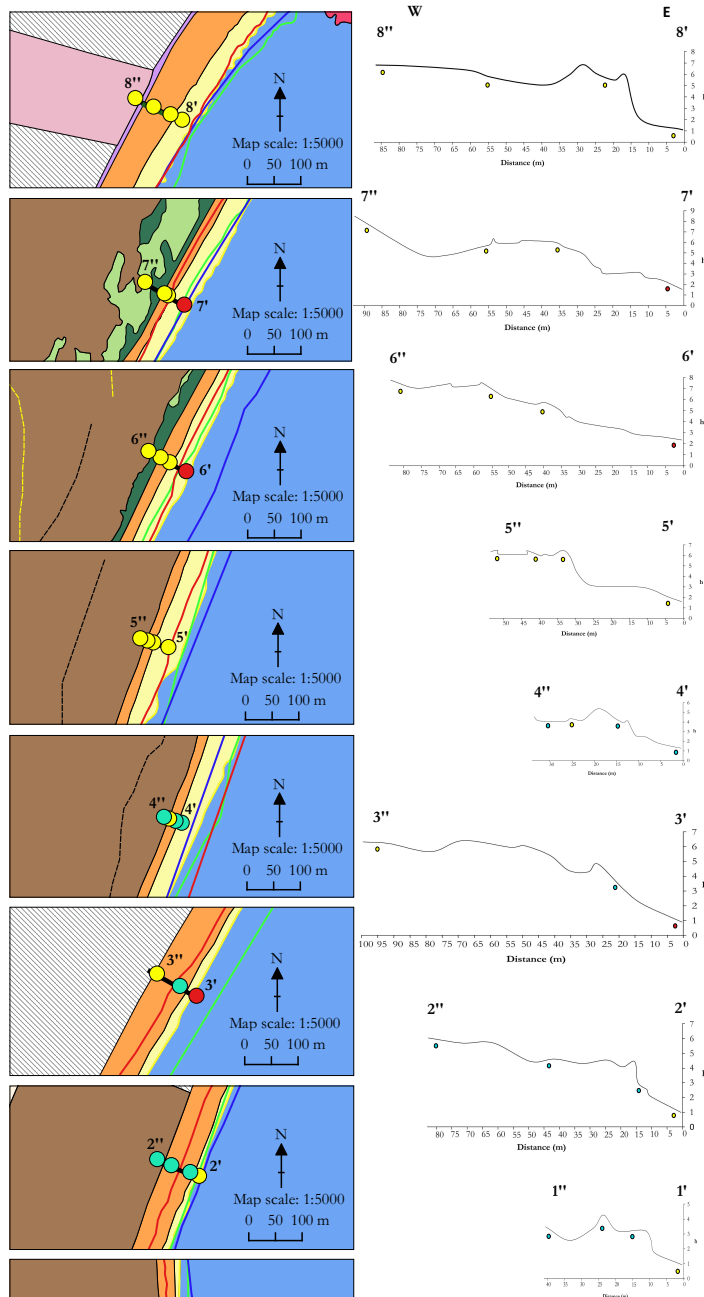
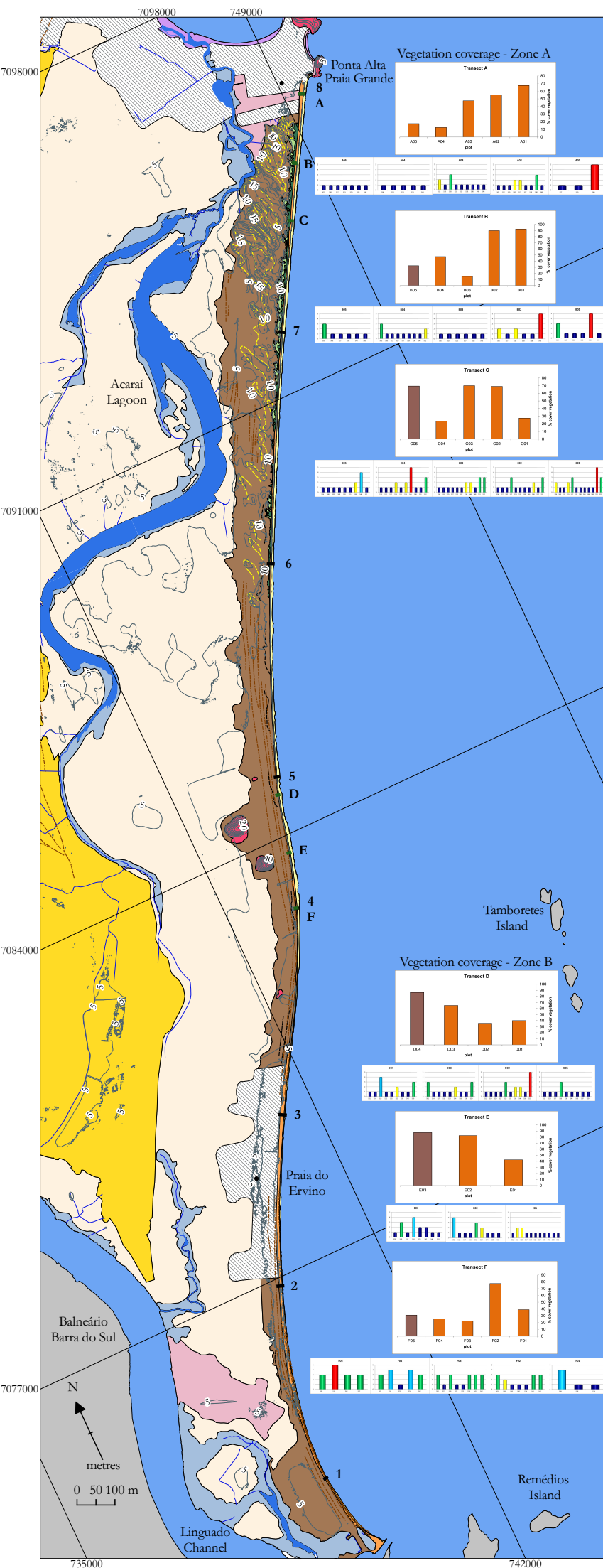
\*duccio.bertoni@unipi.it

1: Department of Earth Sciences, University of Pisa (Italy), 2: Department of Biology, University of the Region of Joinville (Brazil)

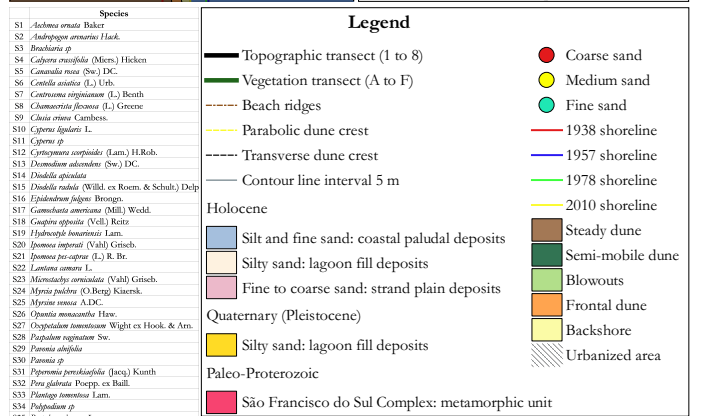


© Journal of Maps, 2017





Projection Universal Transverse Mercator - UTM  
 (22 S, South American Datum 69).  
 Produced: Fernanda Alquini - May/2016.



LEFT MAP: detail of the geological map concerning the Atlantic coastal area of São Francisco do Sul Island, showing the photo-interpretation of Grande beach; numbers and letters point out topographic and vegetational transects respectively. The plots show the vegetation cover and species occurrence percentage (according to the Causton scale) in the two zones (A and B) where vegetation sampling was carried out; bar colours on the plots are in accordance with dune type colours on the map. CENTER MAPS: detail of each topographic transect; dots of different colours represent each grain-size class. The lines of different colours show the evolution of the shoreline in the last 70 years. RIGHT PLOTS: topographic profiles of the beach; dots of different colours represent each grain-size class.