

Supplementary Information

Seasonal variations in the diet and food selection of the Algerian hedgehog *Atelerix algirus*

Chafika Mouhoub-Sayah, Hafsa Djoudad-Kadjji, Florian Kletty, André Malan, Jean-Patrice Robin, Michel Saboureau and Caroline Habold
African Zoology 2018. DOI: 10.1080/15627020.2017.1419072

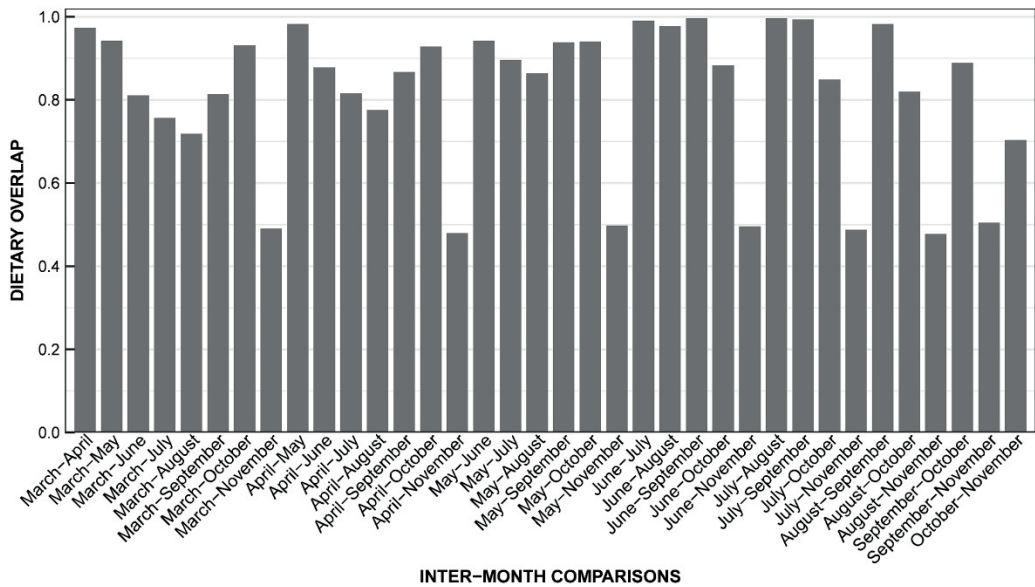


Figure S1: Overlap between months in the diet of the Algerian hedgehog *Atelerix algirus*, computed using Morisita's original index. Wide overlaps indicate that the food niches of the two months compared are similar.

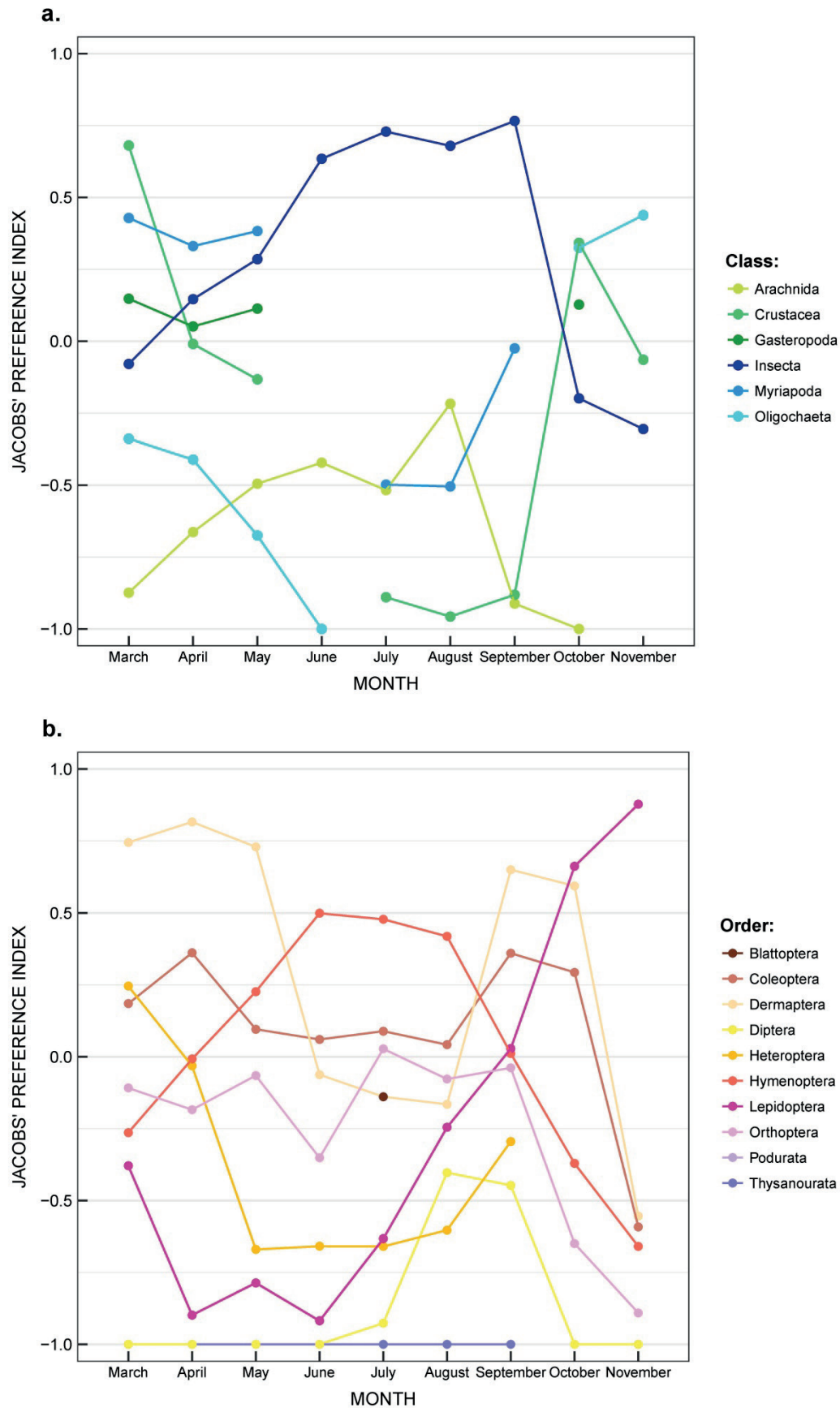


Figure S2: Variations in dietary preference of the Algerian hedgehog (*Atelerix algirus*) over months for prey classes (a) and insect's orders (b), computed with Jacobs' index. Values close to 1 indicate a great preference for the prey, those close to -1 a great avoidance, and those close to 0 indicate an absence of preference or avoidance.