

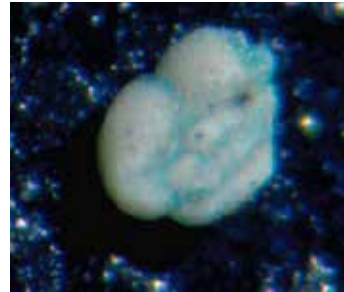
Appendix A. Photomicrographs of benthic and planktonic foraminifera

Sample: **CP17-109**

Benthic foraminifera

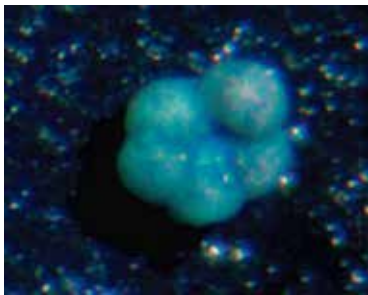


Amodiscus latus

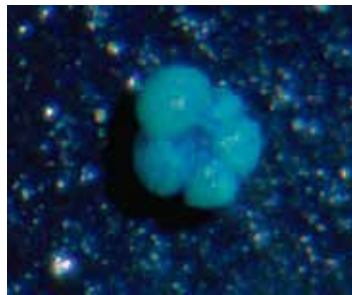


Anomalinoides semicribatus

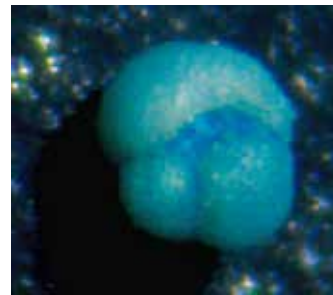
Planktonic foraminifera



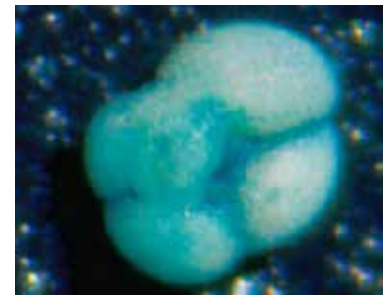
Globigerina ciperoensis
ciperoensis



Globigerina ciperoensis
angulisuturalis



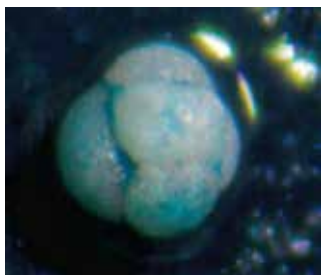
Globigerina tripartita



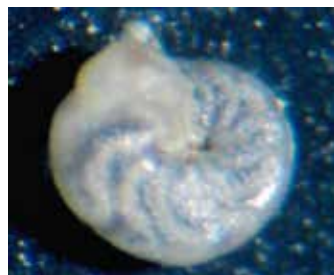
Catapsydrax dissimilis

Sample: **CP17-112**

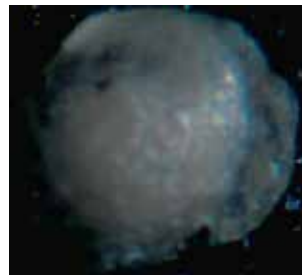
Benthic foraminifera



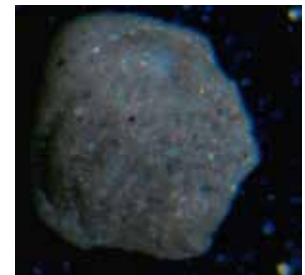
Catapsydrax dissimilis



Discorbinella sp.



Osangularia sp.

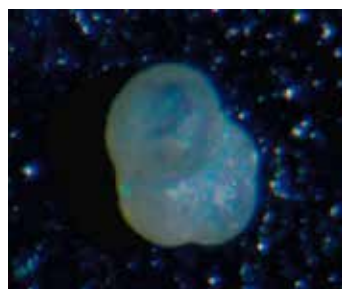


Spiroplectamina sp.

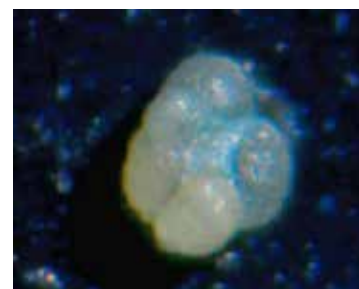
Planktonic foraminifera



Globorotalia opima
opima



Globorotalia opima
nana



Globigerina ciperoensis
ciperoensis