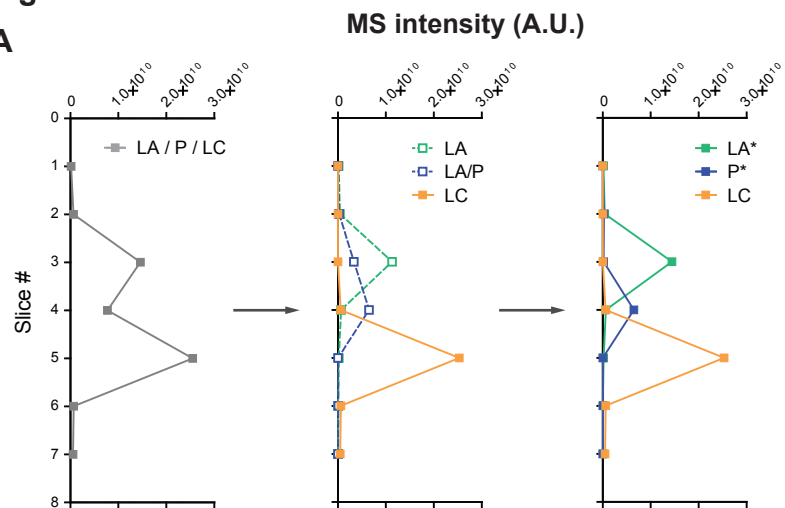


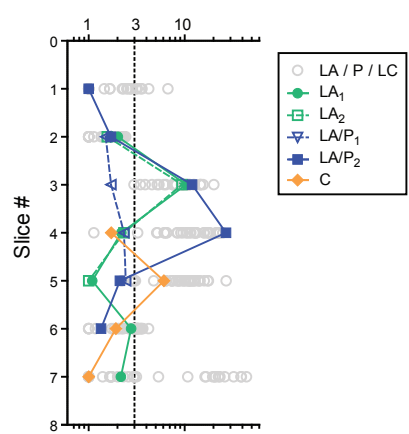
Figure S1

A

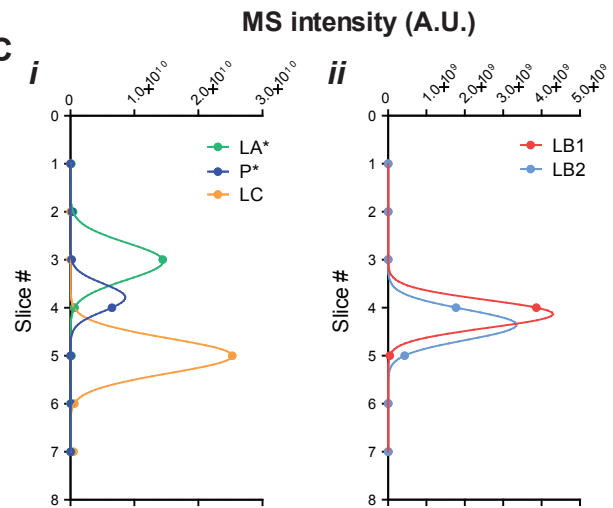


B

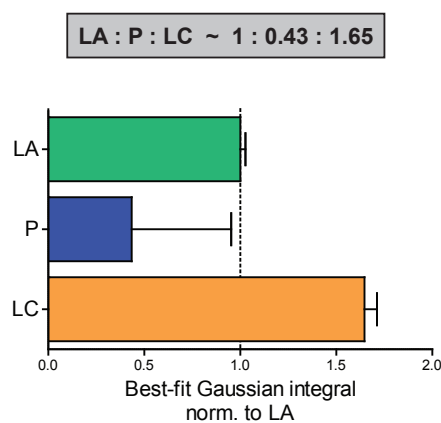
Peptide signal-to-noise ratio
= 1 / (Coeff. of Variation)



C



D



E

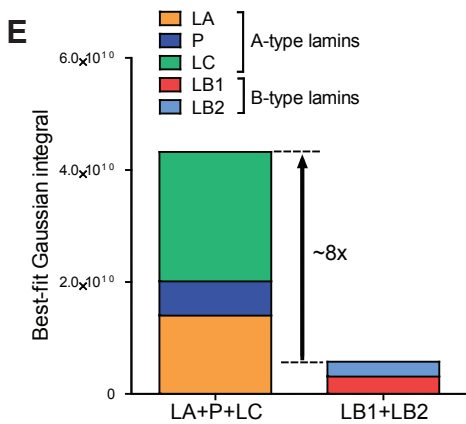
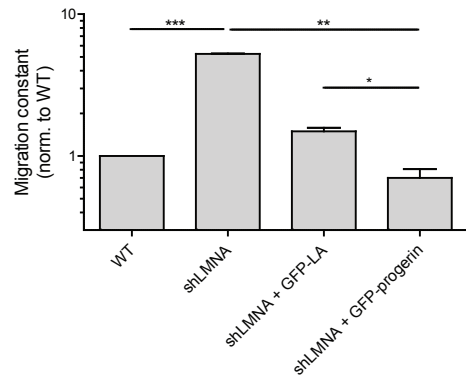


Figure S2

A



B

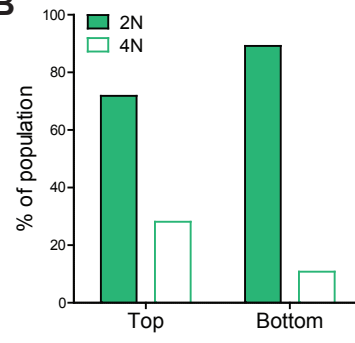


Figure S3

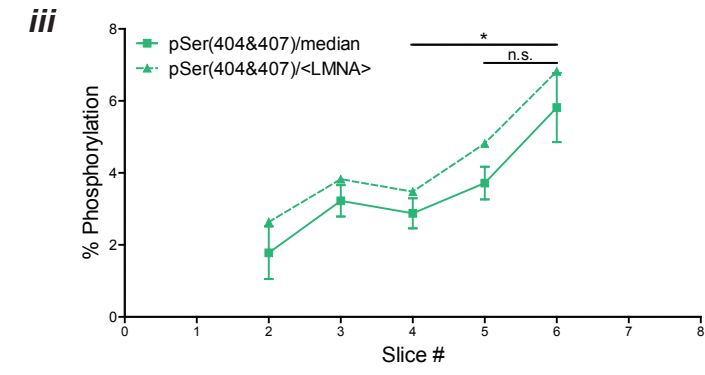
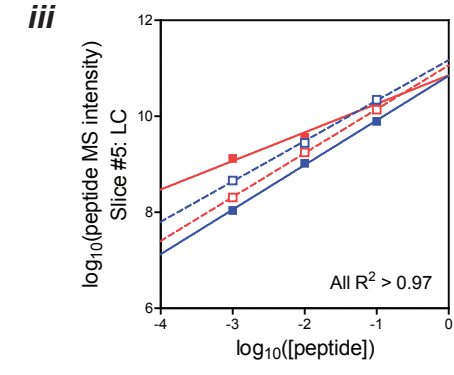
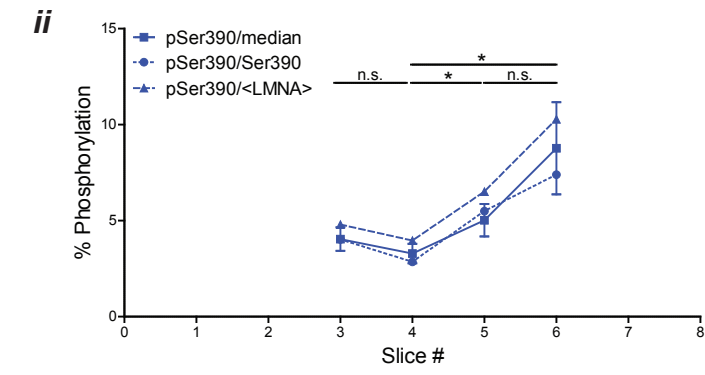
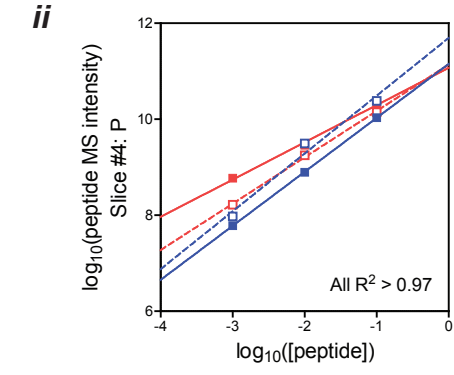
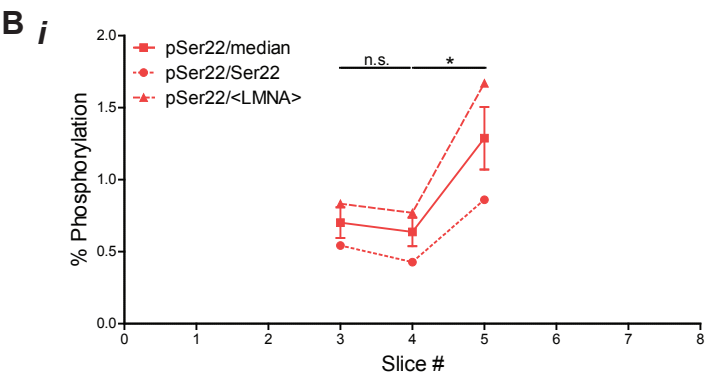
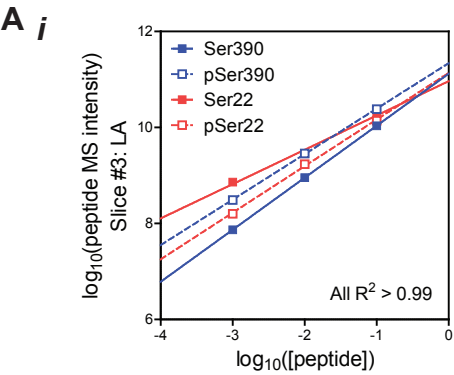


Figure S4

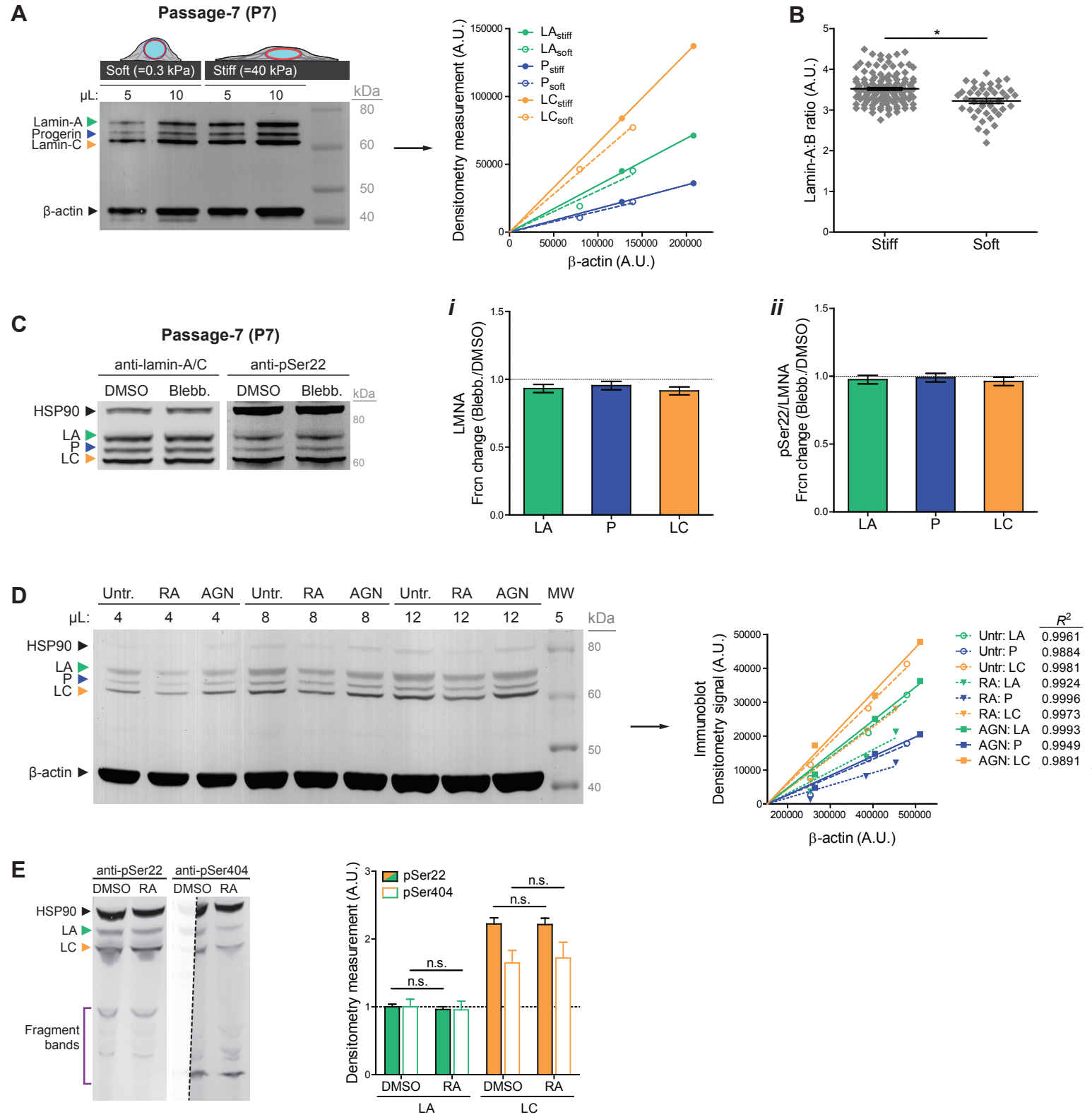


Table S1

# samples detecting phospho-peptide					# samples detecting non-phospho ctl			Detectability (%)		
LMNA	Peptide sequence	LA	P	LC	LA	P	LC	LA	P	LC
pSer18	SGAQASSTPLSPTR	0	1	1	4	4	4	0	25	25
pSer19	SGAQASSTPLSPTR	2	1	1	4	4	4	50	25	25
pSer22	SGAQASSTPLSPTR	1	1	1	4	4	4	25	25	25
pSer390	LRLSPSPTSQR	1	1	2	4	4	4	25	25	50
pSer404,407	ASSHSSQTQGGGSVTK	4	4	4	0	0	0	100	100	100

LMNB1	Peptide sequence	LB1	LB1	LB1
pSer23	AGGPTTPLSPTR	0	4	0
pSer391	LSPSPSSR	0	4	0
pSer393	LSPSPSSR	0	4	0

LMNB2	Peptide sequence	LB2	LB2	LB2
pSer37	AGGPATPLSPTR	0	4	0
pSer405	LSPSPSSR	0	4	0
pSer407	LSPSPSSR	0	4	0