

Supplemental material

Supplemental Table S1 Cox Regression models in predicting MACCEs according to combined categories of TyG and HGI (Tertile 1-2 vs. Tertile 3)

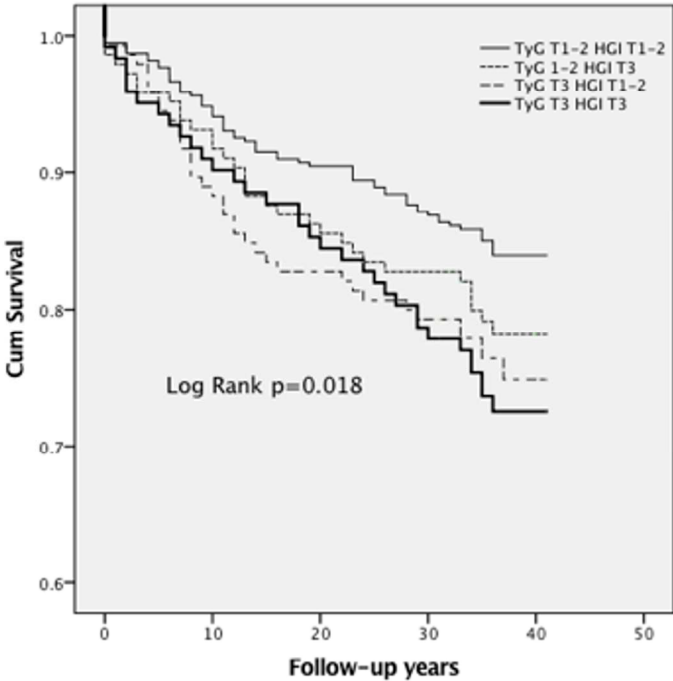
Hazard Ratio(95%CI)				
Category	TyG index T1-2 HGI T1-2	TyG index T1-2 HGI T3	TyG index T3 HGI T1-2	TyG index T3 HGI T3
(n, Events/subjects)	61/388	31/145	35/145	33/122
Unadjusted Model	Ref	1.418 (0.920-2.184)	1.637* (1.080-2.480)	1.820* (1.192-2.780)
Adjusted Model	Ref	1.467 (0.942-2.284)	1.714* (1.085-2.705)	2.101* (1.303-3.386)

Models were adjusted for age, sex, body mass index, hypertension, family history of CAD, smoke, HDL-C, non-HDL-C, creatinine, uric acid, hsCRP, Gensini score.

*p<0.05

Supplemental Figure S1. The event-free survival analysis according to combined category levels of TyG index and HGI (Tertile 1-2 VS Tertile 3)

For Peer Review Only



Supplemental Figure S1. The event-free survival analysis according to combined category levels of TyG index and HGI (Tertile 1-2 vs. Tertile 3)

297x420mm (300 x 300 DPI)