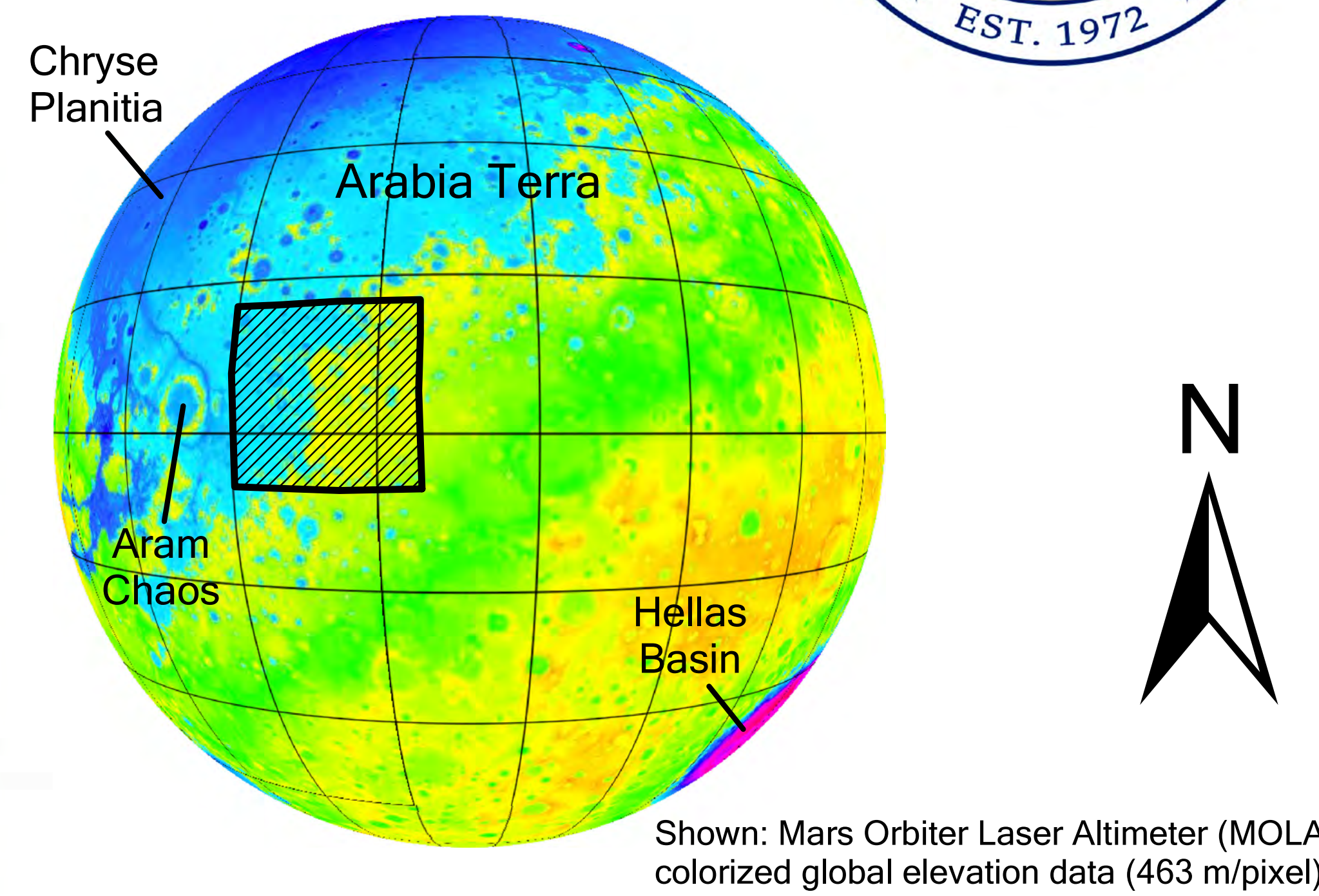
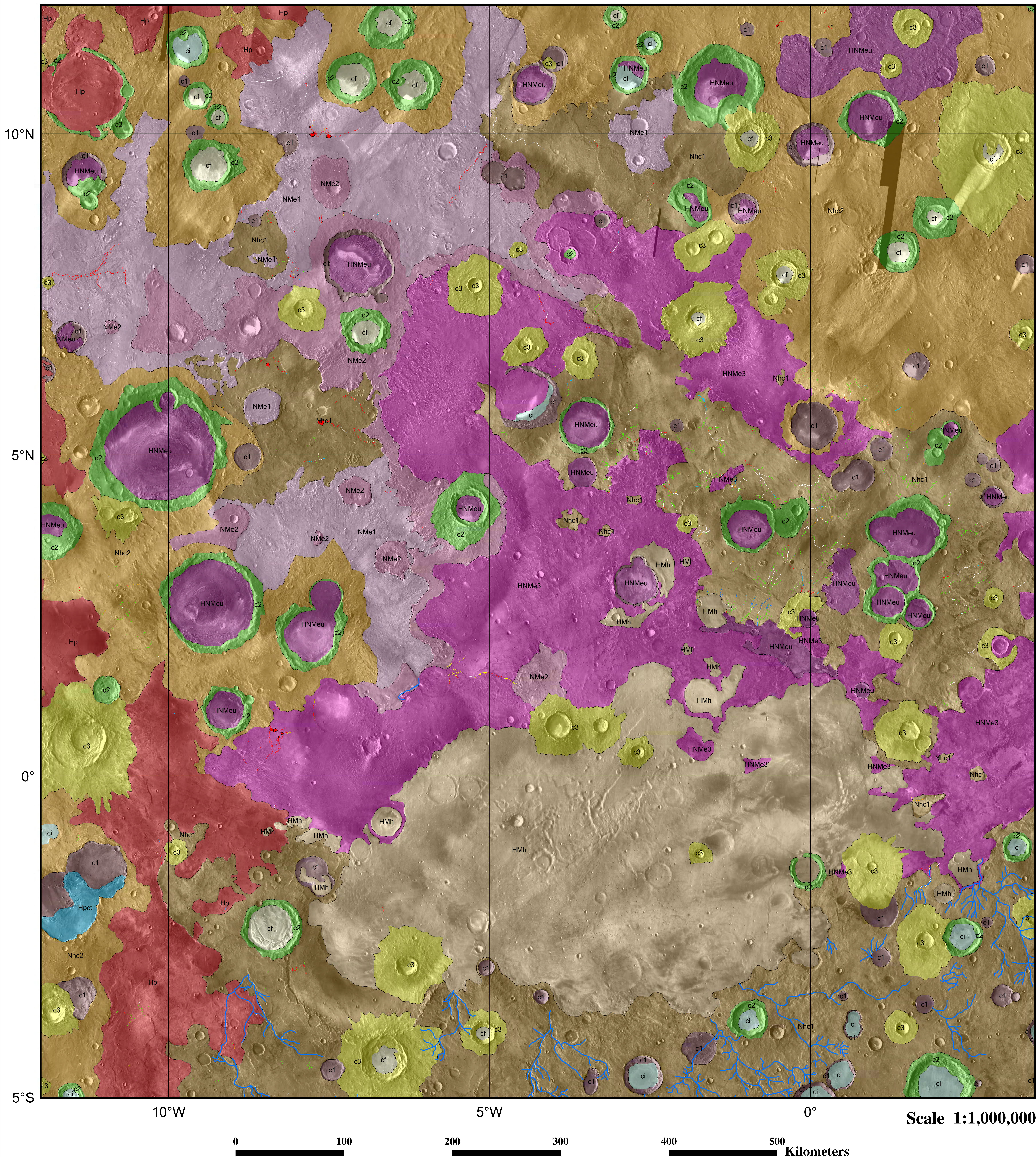
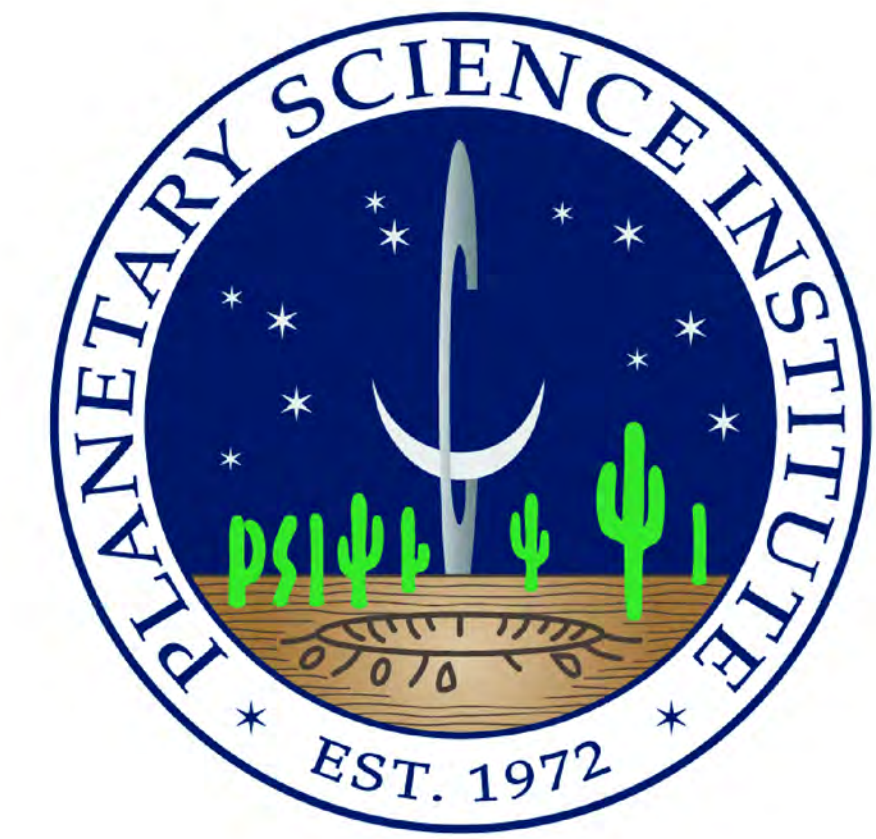


Valley Network Morphology in the Greater Meridiani Planum Region, Mars

Frank C. Chuang and Rebecca M. E. Williams

Planetary Science Institute, 1700 E Fort Lowell Rd., Suite 106, Tucson, AZ 85719 USA (e-mail: chuang@psi.edu)



LEGEND

Valley Network Morphologic Types

- Ridges (Ridge1-Ridge7)
- Troughs (Trough1-Trough2)
- Channels
- Pitted
- Knobs
- Two or more types
- Classic Valley Network

Candidate Paleolakes

Hynek et al. (2010) Valley Networks

Hynek and Di Achille (2017)

Geologic Units

- Chaotic (Hpct)
- Plains (Hp)
- Hematite (HMh)
- Undivided etched (HNMeu)
- Upper etched (HNMe3)
- Middle etched (NMe2)
- Lower etched (NMe1)
- Cratered (Nhc2)
- Subdued crater (Nhc1)
- Internal crater deposits (ci)
- Crater fill (cf)
- Well-preserved crater (c3)
- Moderately eroded crater (c2)
- Highly eroded crater (c1)

Geologic Contacts

- Approximate
- Certain

In stratigraphic order (oldest at bottom)

REFERENCES

Hynek, B. M., & Di Achille, G. (2017). Geologic Map of Meridiani Planum, Mars. U. S. Geological Survey Scientific Investigations Map 3356. Scale 1:20,000,000. <https://doi.org/10.3133/sim3356>.

Hynek, B. M., Beach, M., & Hoke, M. R. T. (2010). Updated global map of Martian valley networks and implications for climate and hydrologic processes. *Journal of Geophysical Research*, 115. doi:10.1029/2009JE003548.