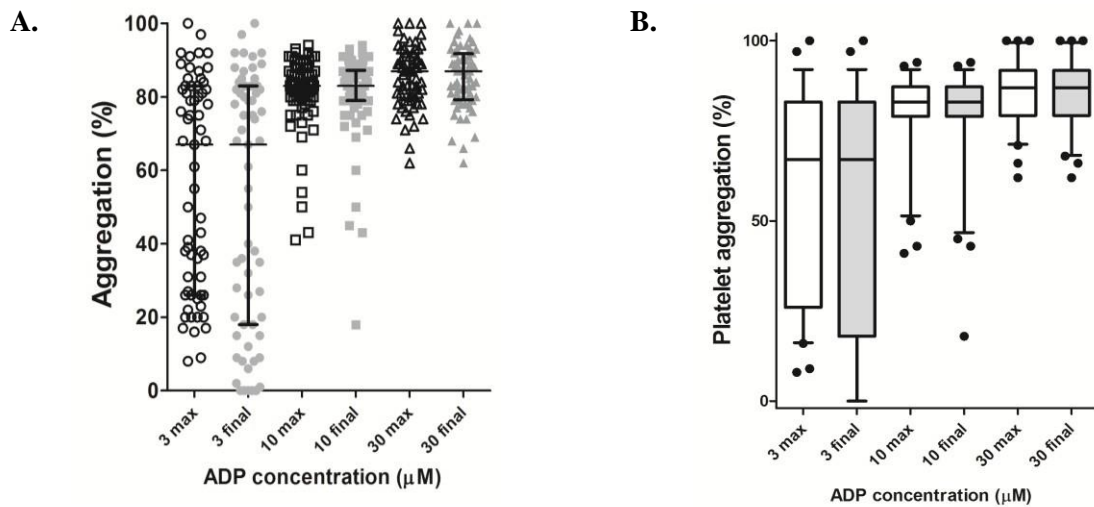
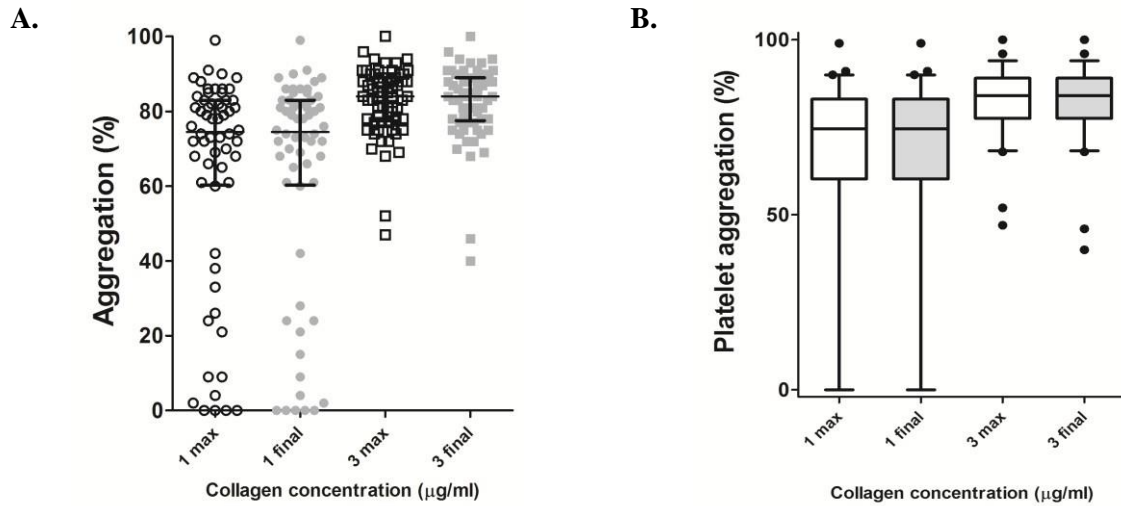


## Supplementary Figures

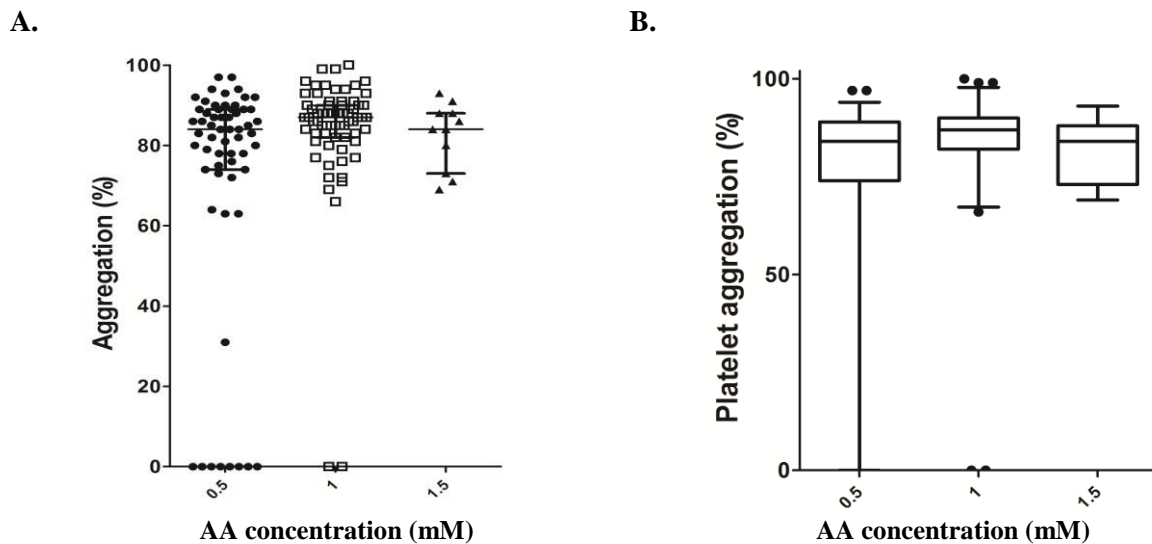
### Assessment of Platelet Aggregation and secretion in healthy volunteers.



**Supplementary Figure 1.1** ADP responses. For panel A, bars represent median and interquartile range. Black symbols represent maximal aggregation and grey symbols represent final aggregation 5 minutes after agonist addition. For panel B, boxes represent median and interquartile range, whiskers represent 5<sup>th</sup> and 95<sup>th</sup> percentiles and outlying points are represented by dots. Black symbols represent maximal aggregation, grey symbols represent final aggregation 5 mins after agonist addition.

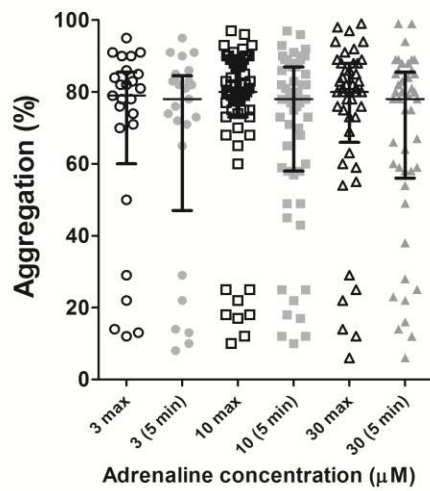


**Supplementary Figure 1.2** Collagen responses. For panel A, bars represent median and interquartile range. Black symbols represent maximal aggregation and grey symbols represent final aggregation 5 minutes after agonist addition. For panel B, boxes represent median and interquartile range, whiskers represent 5<sup>th</sup> and 95<sup>th</sup> percentiles and outlying points are represented by dots. Black symbols represent maximal aggregation, grey symbols represent final aggregation 5 mins after agonist addition.

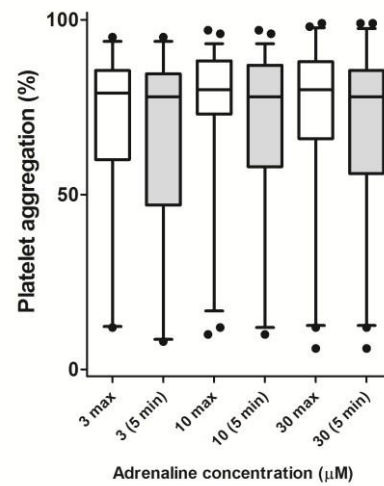


**Supplementary Figure 1.3** Arachidonic acid responses. For panel A, bars represent median and interquartile range. For panel B, boxes represent median and interquartile range, whiskers represent 5<sup>th</sup> and 95<sup>th</sup> percentiles and outlying points are represented by dots. Maximal aggregation only is shown (as no healthy volunteers showed deaggregation to arachidonic acid).

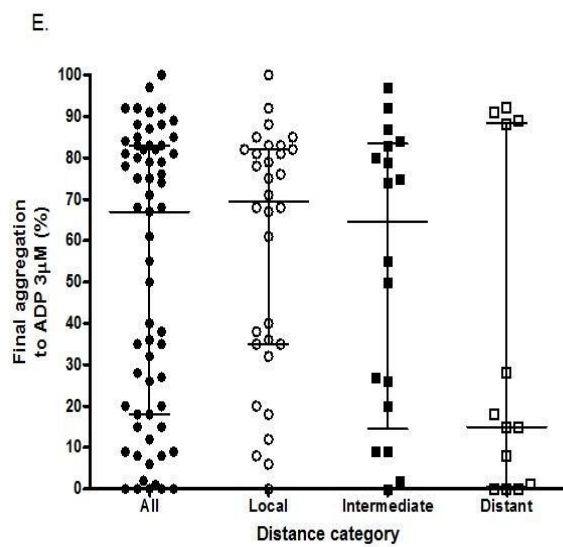
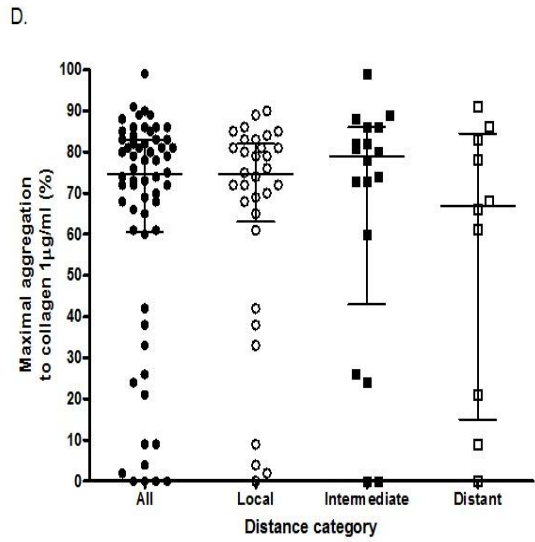
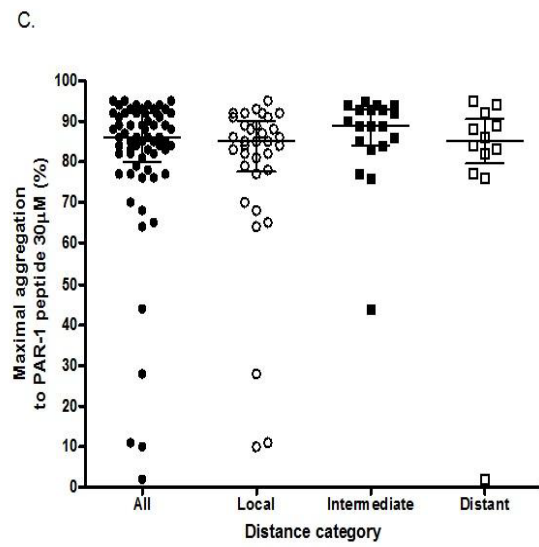
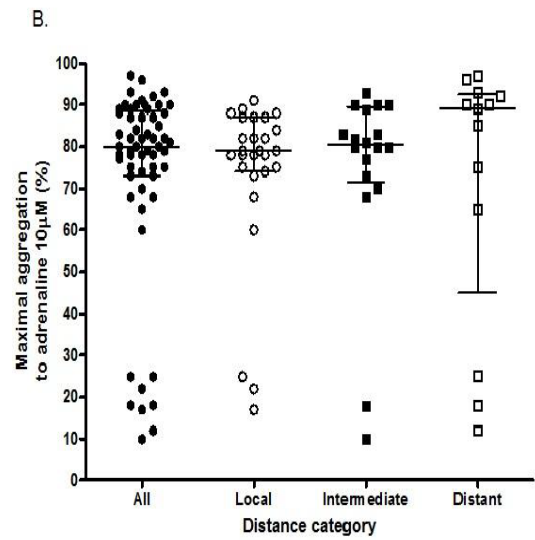
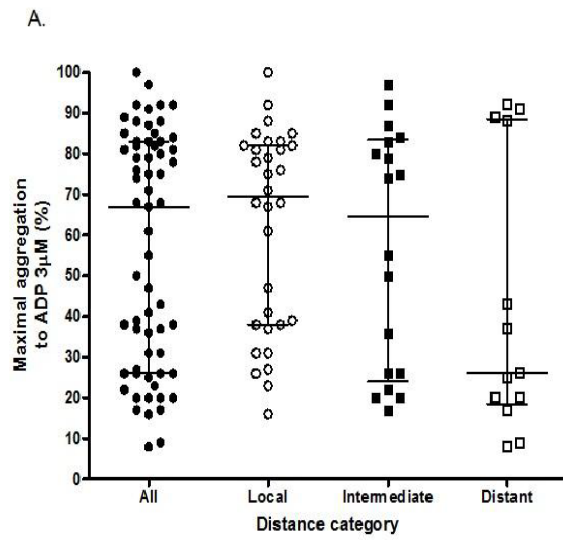
A.



B.



**Supplementary Figure 1.4** Adrenaline responses. For panel A, bars represent median and interquartile range. Black symbols represent maximal aggregation and grey symbols represent aggregation 5 minutes after agonist addition (aggregation was monitored for ten minutes in total for adrenaline). For panel B, boxes represent median and interquartile range, whiskers represent 5<sup>th</sup> and 95<sup>th</sup> percentiles and outlying points are represented by dots. Black symbols represent maximal aggregation and grey symbols represent aggregation 5 minutes after agonist addition (aggregation was monitored for ten minutes in total for adrenaline).



**Supplementary Figure 2.** Effect of distance travelled by sample. X axis for all panels shows all responses, and subcategories of local (testing and venepuncture performed in same city), intermediate (tested from a city less than 100 miles away) and distant (tested from a city 100 miles or more away) testing. Bars represent median and interquartile range. Panel A shows maximal aggregation to ADP 3 $\mu$ M, Panel B shows maximal aggregation to adrenaline 10 $\mu$ M, Panel C shows maximal aggregation to PAR-1 peptide 30 $\mu$ M, Panel D shows maximal aggregation to collagen 1 $\mu$ g/ml, and Panel E shows final aggregation at 5 minutes post agonist addition (allowing for deaggregation) to ADP 3 $\mu$ M. For all panels  $p > 0.05$  using Kruskal Wallis test to compare local, intermediate and distant groups. For all panels no  $p$  values  $\leq$

## **Supplemental Acknowledgements**

The members of the UK Genotyping and Phenotyping of Platelets Study Group are: Steve P. Watson, Marie Lordkipanidze (University of Birmingham); Andrew D. Mumford and Stuart J. Mundell (University of Bristol); Paul Gissen (University College London); Martina E. Daly (University of Sheffield); Will Lester and Justin Clark (Birmingham Women's Hospital); Mike Williams, Jayashree Motwani, Dianne Marshall, Natalie Lawson, Priscilla Nyatanga, Pat Mann, and Julie Kirwan (Birmingham Children's Hospital); Jonathan Wilde, Tracey Dunkley, Pam Green and April Greenway (University Hospital Birmingham); Michael Makris (Sheffield Haemophilia and Thrombosis Centre, Royal Hallamshire Hospital); Jeanette Payne (Paediatric Haematology Centre, Sheffield Children's Hospital); Sue Pavord, Richard Gooding and Rashesh Dattani (University Hospitals Leicester); Gerry Dolan Charlotte Grimley, Simone Stokley, Emma Astwood, Karyn Longmuir, Cherry Chang, Merri Foros, Michelle Kightley and Linda Trower (Nottingham University Hospitals); Jecko Thachil (previously Paula Bolton Maggs), Charlie Hay, Gill Pike, Andrew Will, John Grainger, Matt Foulkes, and Mona Fareh (Central Manchester National Health Service [NHS] Foundation Trust); Kate Talks, Tina Biss, Patrick Kesteven, John Hanley, Julie Vowles, Lesley Basey, Kevin Knaggs and Michelle Barnes (Newcastle upon Tyne Hospitals NHS Trust); Peter Collins, Rachel Rayment, Raza Alikhan, Ana Guerrero Rebecca Morris, and Dianne Mansell (Cardiff and Vale University Local Health Board); Cheng Hock Toh and Vanessa Martlew (Royal Liverpool University Hospitals); Elaine Murphy and Robin Lachmann (University College London Hospitals NHS Trust); Peter Rose, Oliver Chapman, Anand Lokare, Kathryn Marshall, and Naseem Khan (University Hospitals Coventry and Warwickshire); David Keeling, Nikki Curry and Paul Giangrande (Oxford Radcliffe Hospitals NHS Trust); Steve Austin, David Bevan and Jayanthi Alamelu (Guys'

and St. Thomas' NHS Foundation Trust); David Allsup, Andrew Fletcher, Katherine Gladstone, Jeanette Fenwick, Philippa Woods and Darren Camp (Hull and East Yorkshire Hospitals NHS trust, Castle Hill Hospital, Hull); Beki James, Suzie Preston and Chung Lai-Wah (Leeds Teaching Hospitals NHS trust); Angela Thomas (Royal Hospital for Sick Children Edinburgh); Bethan Myers (Lincoln County Hospital); Gillian Evans, Kim Elliot, Karen Davies, Charlotte Graham and Miranda Foad, (Kent & Canterbury Hospital).

Dr Neil Morgan has authorised authorship on behalf of the UK Genotyping and Phenotyping of Platelets Study Group.