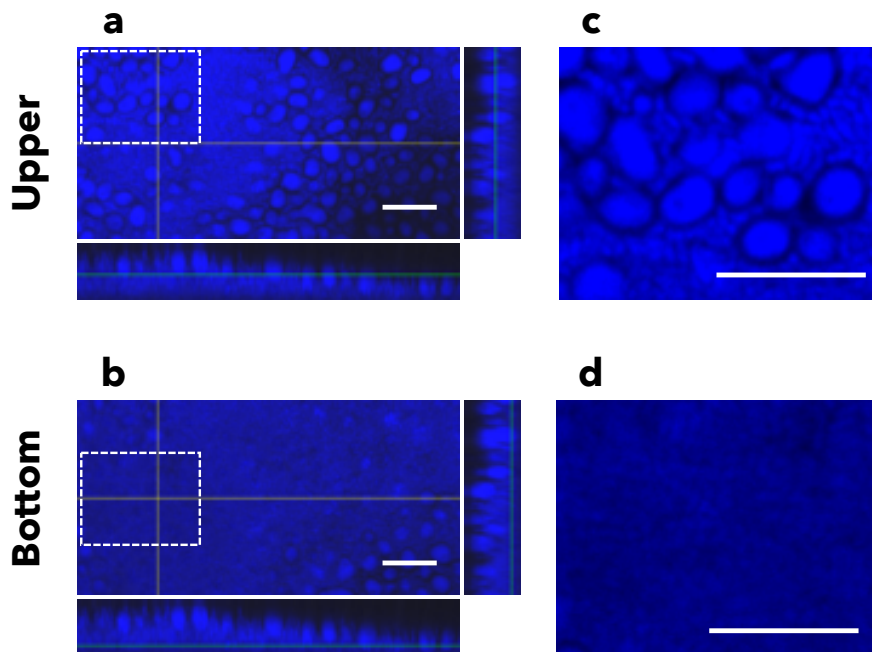
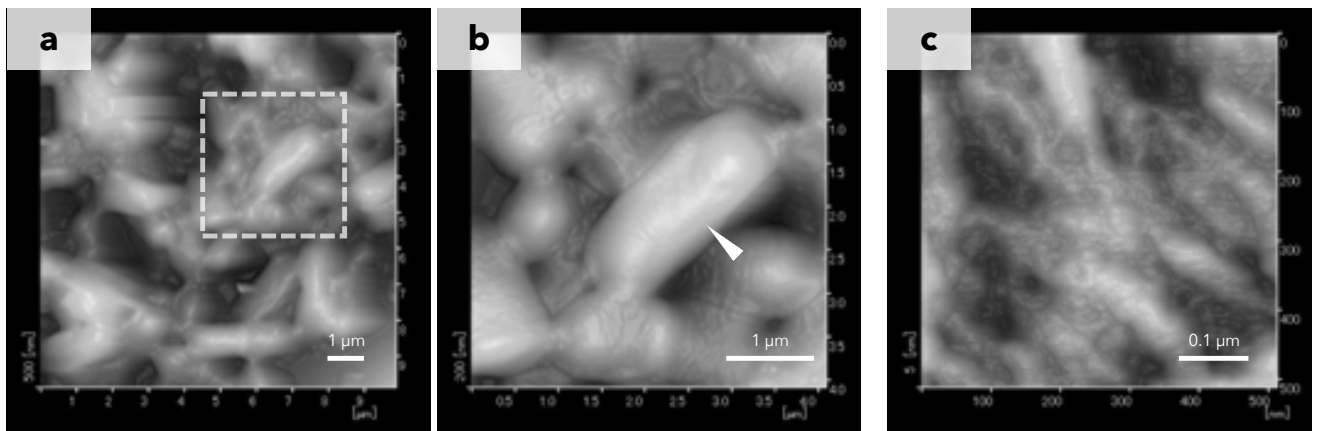


Supplemental Fig. S1 CLSM images of *L. plantarum* ML11-11 and *S. cerevisiae* BY4741 planktonic cells cultured individually. Scale bars represent 10 μ m.



Supplemental Fig. S2 DAPI images of the mixed-species biofilm formed by *L. plantarum* ML11-11 and *S. cerevisiae* BY4741. Each image represents the bottom (b, $Z=1.5\ \mu\text{m}$) and the upper parts (a, $Z=4.5\ \mu\text{m}$) of the biofilm. (c) and (d) represent enlarged views of the area enclosed by squares in (a) and (b), respectively. Scale bars represent $10\ \mu\text{m}$.



Supplemental Fig. S3 AFM images of the biofilm formed by *L. plantarum* ML11-11 single culture. The high magnification image of the area within the square in (a) is displayed in (b). The surface of the cell pointed by triangle in (b) is shown in (c).