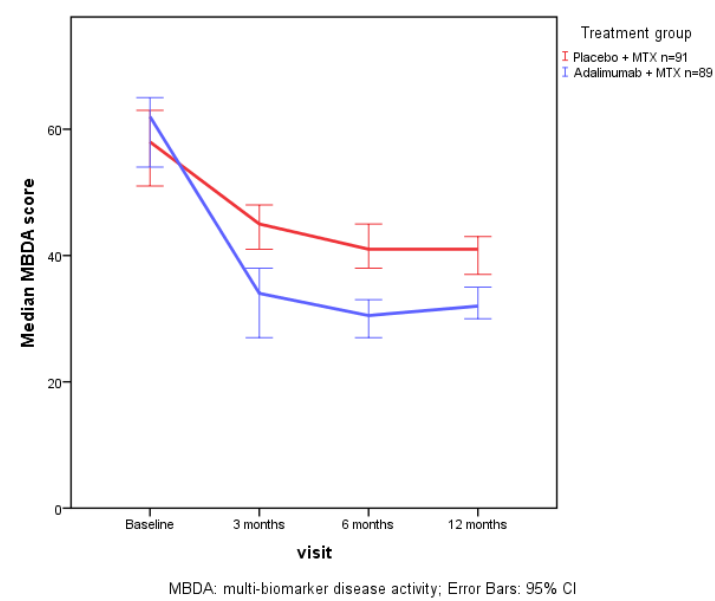
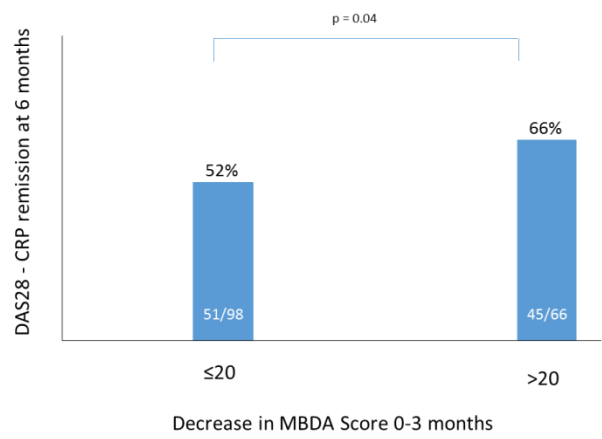


Supplementary figure S1 Median Δ MBDA score by treatment group



Supplementary figure S2 Patients with a decrease in MBDA score from 0-3 months (≤ 20 or >20) and achievement of DAS28 remission at 6 months



Supplementary table S1 Spearman's correlations of baseline MBDA score and Δ MBDA score versus changes in disease activity measures (CDAI, SDAI, CRP) after 6 and radiographic damage (JSN, ES) after 12 months

	ΔCDAI		ΔSDAI		ΔCRP		ΔJSN		ΔES	
	0-6 months						0-12 months			
	MTX group	MTX + adalimumab group	MTX group	MTX + adalimumab group	MTX group	MTX + adalimumab group	MTX group	MTX + adalimumab group	MTX group	MTX + adalimumab group
MBDA score _{baseline}	r = -0.403 (p<0.001)*	r = -0.266 (p=0.016)*	r = -0.470 (p<0.001)*	r = -0.398 (p<0.001)*	r = -0.762 (p<0.001)*	r = -0.761 (p<0.001)*	r = 0.237 (p=0.028)*	r = 0.060 (p=0.589)	r = 0.225 (p=0.044)*	r = 0.077 (p=0.481)
ΔMBDA score _{0-3 m}	r = 0.322 (p=0.003)*	r = 0.258 (p=0.022)*	r = 0.356 (p=0.001)*	r = 0.309 (p=0.006)*	r = 0.423 (p<0.001)*	r = 0.354 (p=0.001)*	r = 0.017 (p=0.881)	r = 0.303 (p=0.007)*	r = -0.049 (p=0.674)	r = -0.004 (p=0.971)

Δ : change; 0-3m: from baseline to 3 months; 0-6m: from baseline to 6 months; MBDA, multi-biomarker disease activity; CDAI, Clinical Disease Activity Index; SDAI, Simplified Disease Activity Index; CRP, serum C-reactive protein (mg/L) measured in a clinical laboratory; MBDA, multi-biomarker disease activity. Rho, Spearman correlation coefficient; p, p-value.
 Δ TSS: total Sharp score; Δ JSN: joint space narrowing; Δ ES: erosion score; MBDA: multi-biomarker disease activity; r: Spearman correlation coefficient; p: p-values calculated by Mann-Whitney U test; * p-value<0.05.