

SUPPLEMENTAL DATA

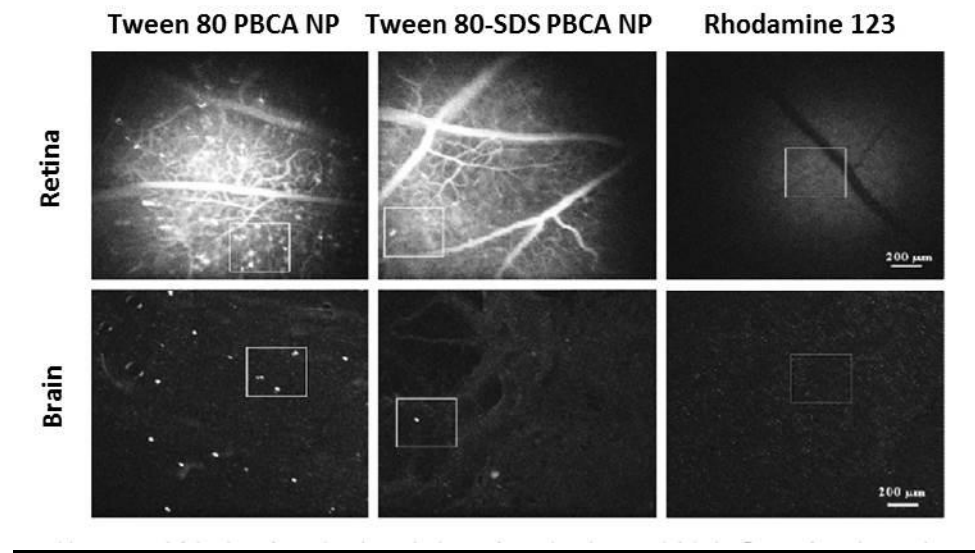


Figure S1. BBB versus BRB. We tested whether the results from our BRB model are also valid for the situation at the BBB by comparing ICON and brain slice image after injection. The High-permeable Tween 80 PBCA NPs, the low-permeable Tween 80-SDS PBCA NPs and Rhodamine 123 (fluorescent marker without NP as control group) showed comparable fluorescence signals between retina and brain tissue.