

Structural elements of the southern Thomson Orogen (Australian Tasmanides): a tale of megafolds

M. P. Doublier^a, D. Purdy^b, R. Hegarty^c, M. Nicoll^a, and H. Zwingmann^d

^a Geoscience Australia, GPO Box 378, Canberra, ACT 2601, Australia; ^b Geological Survey of Queensland, QLD Department of Natural Resources, Mines and Energy, PO Box 15261, Brisbane City East, QLD 4002, Australia; ^c Geological Survey of New South Wales, NSW Department of Planning and Environment, PO Box 344 Hunter Region MC, NSW 2310, Australia; ^d Division of Earth and Planetary Sciences, Graduate School of Science, Kyoto University, Sakyo, Kyoto, 606-8502, Japan

*E-mail: michael.doublier@ga.gov.au

SUPPLEMENTARY PAPERS

Australian Journal of Earth Sciences (2018) 65 (7+8),
<https://doi.org/10.1080/08120099.2018.1526213>

Copies of Supplementary Papers may be obtained from the Geological Society of Australia's website (www.gsa.org.au), the Australian Journal of Earth Sciences website (www.ajes.com.au) or from the National Library of Australia's Pandora archive (<http://nla.gov.au/nla.arc-25194>).

Supplementary papers

Figure S1. Major faults and shear zones of the southern Thomson Orogen on a semitransparent tilt derivative magnetic image (in colour), draped over a greyscale 1VD RTP magnetic intensity image; see Figure 1 for position.

Figure S2. Structural interpretation of the Mungallala Fault area showing sinistral dragging of magnetic features into the structure on a greyscale 1VD RTP magnetic intensity image (white corresponds to high magnetic intensity); see Figure 1 for position.

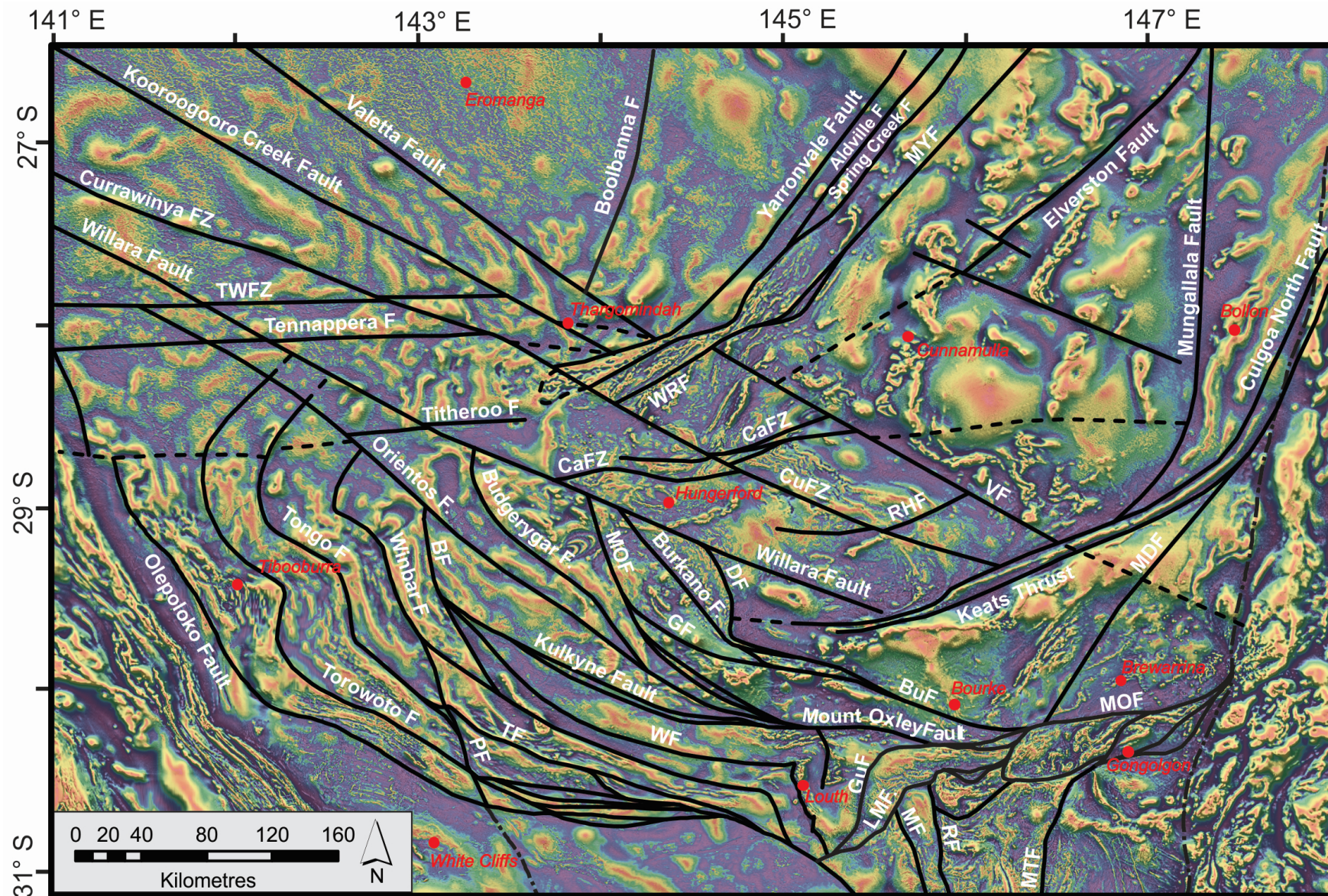


Figure S1. Major faults and shear zones of the southern Thomson Orogen on a semi-transparent tilt derivative magnetic image (in colour), draped over a greyscale 1VD RTP magnetic intensity image; see Figure 1 for position.

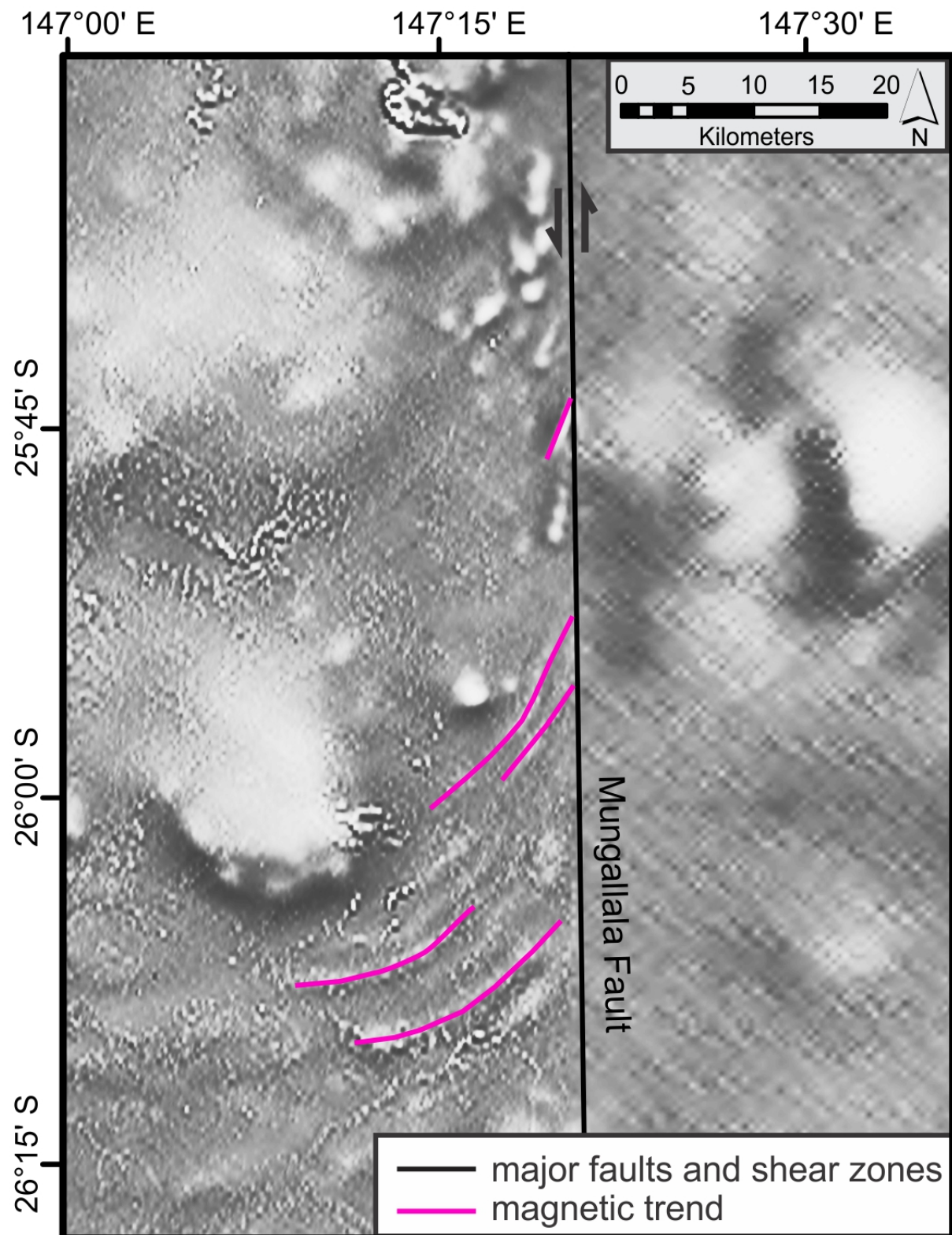


Figure S2. Structural interpretation of the Mungallala Fault area showing sinistral dragging of magnetic features into the structure on a greyscale 1VD RTP magnetic intensity image (white corresponds to high magnetic intensity); see Figure 1 for position.