

IFRA 1610563 - SUPPLEMENTARY FIGURES

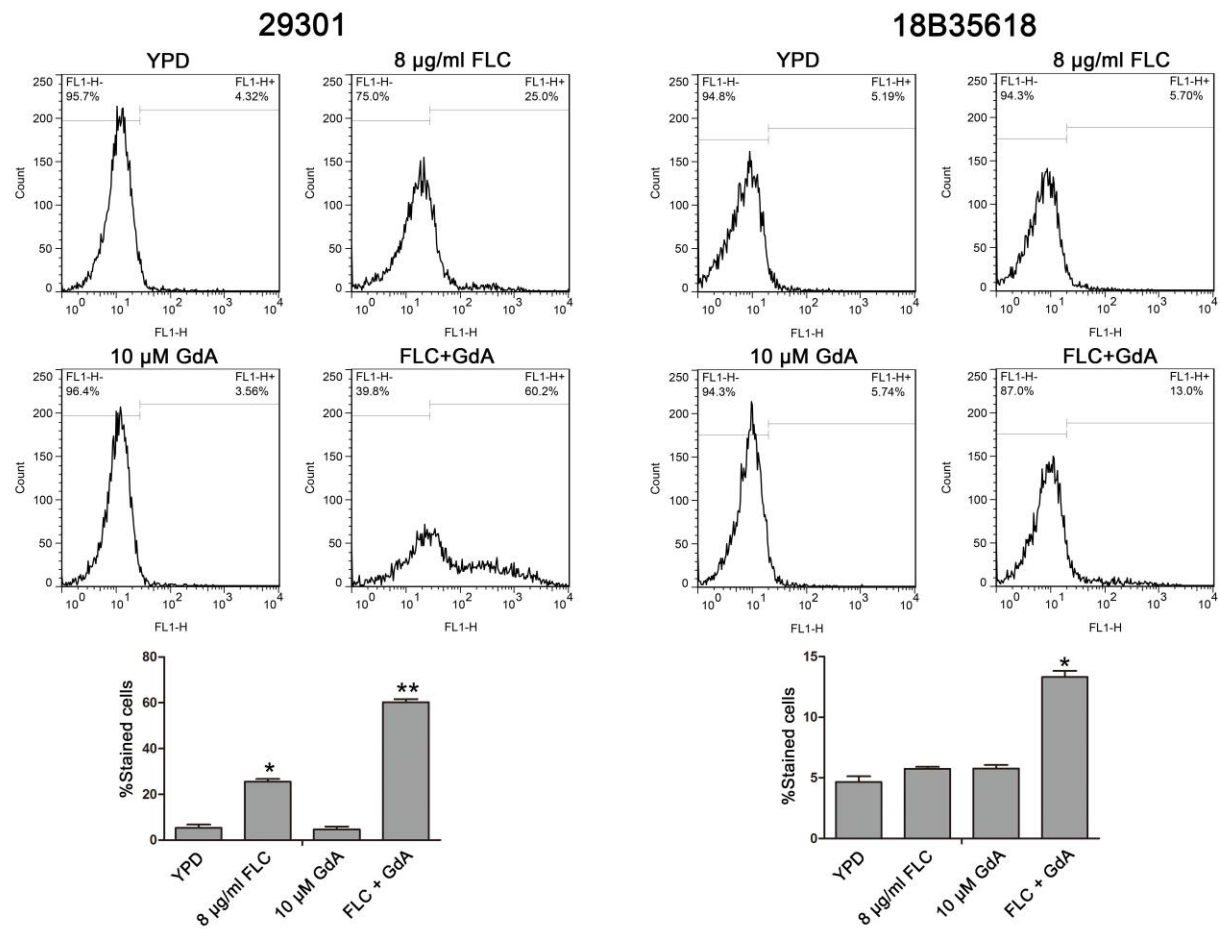


Fig. S1. Growth was determined in the fluconazole-sensitive strain (29301) and fluconazole-resistant strain (18B35618) after treatment by fluconazole, GdA, and fluconazole plus GdA for 24 h. Data was shown as mean \pm SD. * P <0.05, and ** P <0.01 indicate significant difference between treatment group and the YPD group

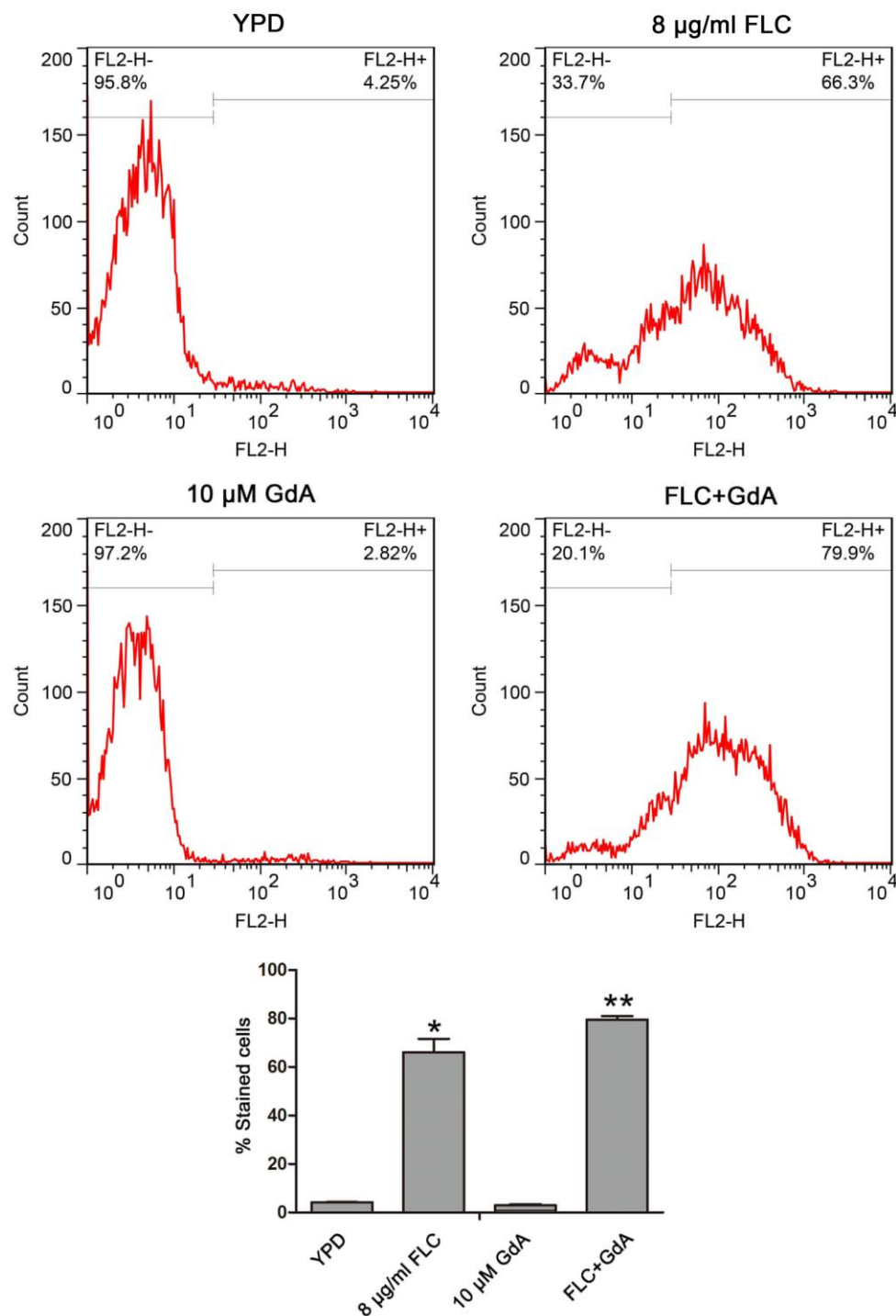


Fig. S2. ROS levels were measured in the fluconazole-sensitive strain (29301) and fluconazole-resistant strain (18B35618) after treatment by fluconazole plus GdA for 24 h. The histogram expressed the percentage of stained cells, and the data were exhibited as mean \pm SD. * $P < 0.05$, ** $P < 0.01$ versus the YPD group.

