

Supplementary Material

Influences of different definitions of the winter NAO index on NAO action centers and its relationship with SST

Yujie JING^{a,b}, Yangchun LI^{b,c,d}, Yongfu XU^{b,c,d} and Guangzhou FAN^a

^aSchool of Atmospheric Sciences, Chengdu University of Information Technology, Chengdu 610225, China; ^bState Key Laboratory of Atmospheric Boundary Layer Physics and Atmospheric Chemistry, Institute of Atmospheric Physics, Chinese Academy of Sciences, Beijing 100029, China; ^cLaboratory for Regional Oceanography and Numerical Modeling, Qingdao National Laboratory for Marine Science and Technology, Qingdao 266237, China; ^dDepartment of Atmospheric Chemistry and Environmental Sciences, College of Earth Science, University of Chinese Academy of Sciences, Beijing 100049, China

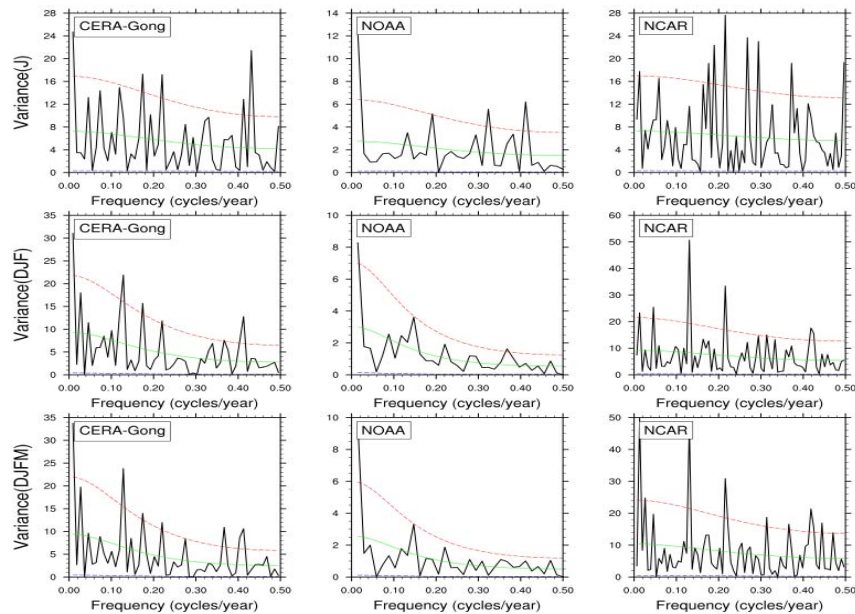


Figure S1. Power spectrum of three sets of observation-based NAO indexes. The time

ranges for $\text{NAO}_{\text{Gong-obs}}$, $\text{NAO}_{\text{NOAA-obs}}$, and $\text{NAO}_{\text{NCAR-obs}}$ are 1901–2010, 1950–2017, and 1865–2017, respectively.