

Appendix

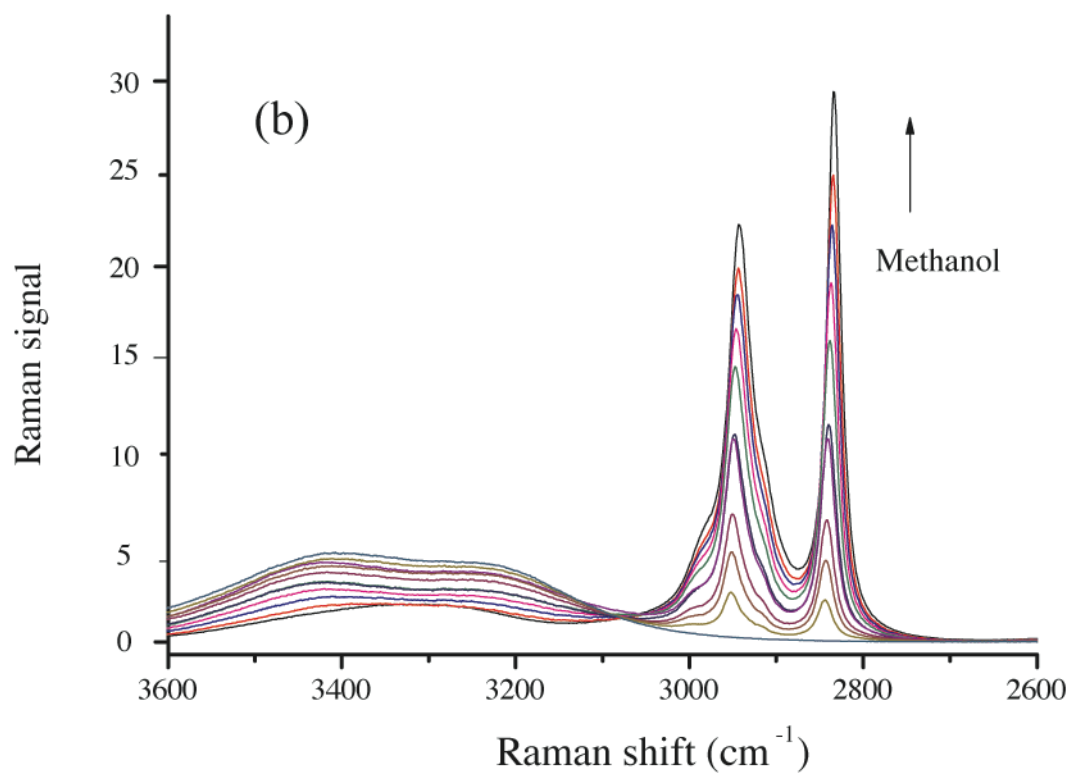
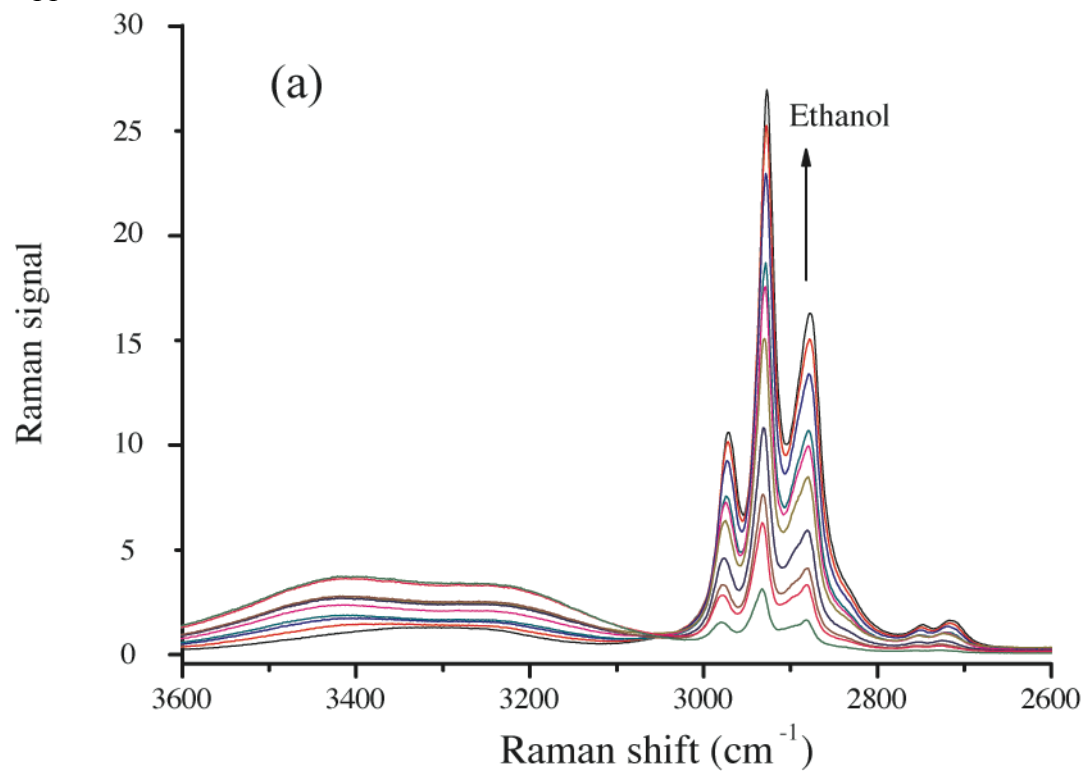


Figure 1S Raman spectra of ethanol-water (a), methanol-water (b), and ethanol-methanol binary solutions with different mass fractions (c).

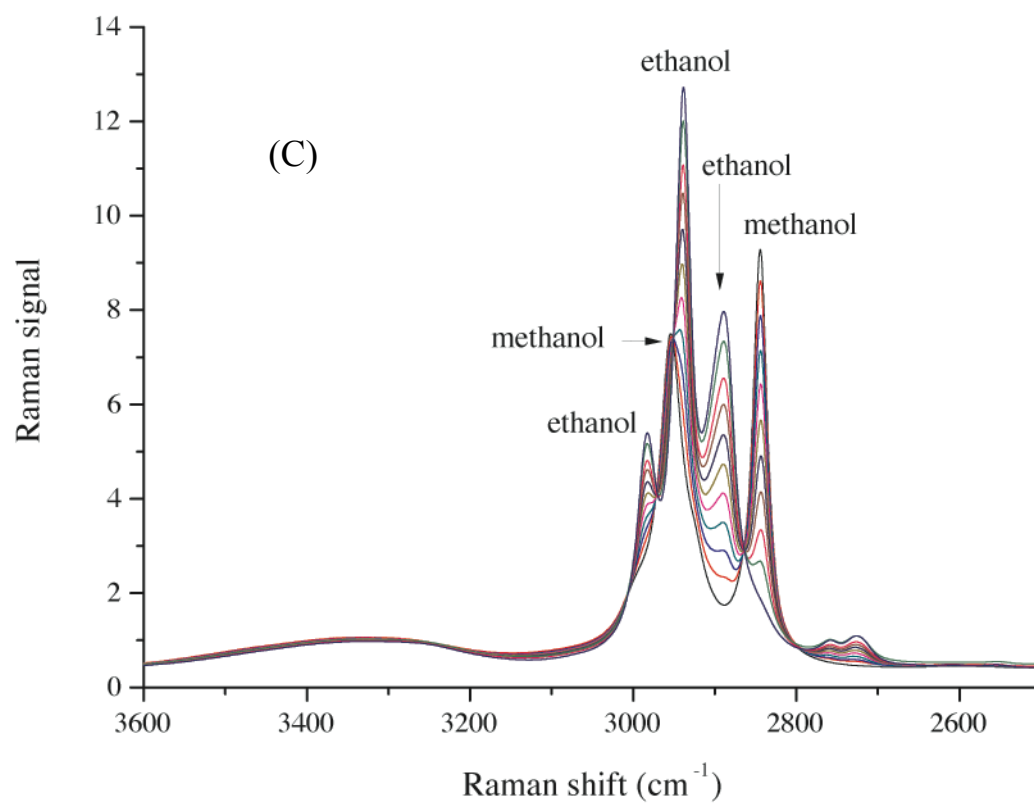
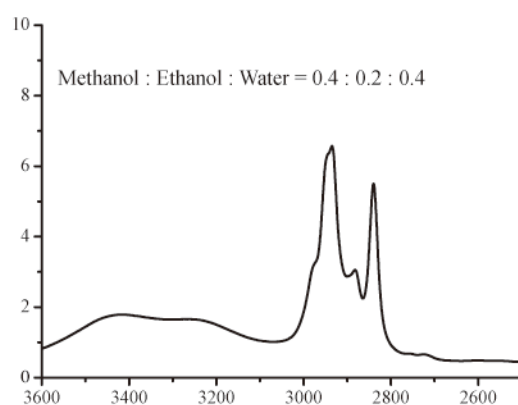
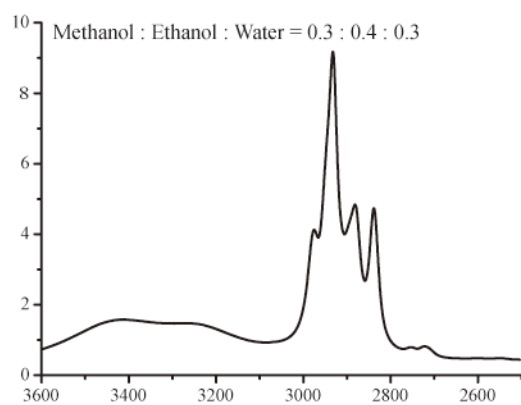
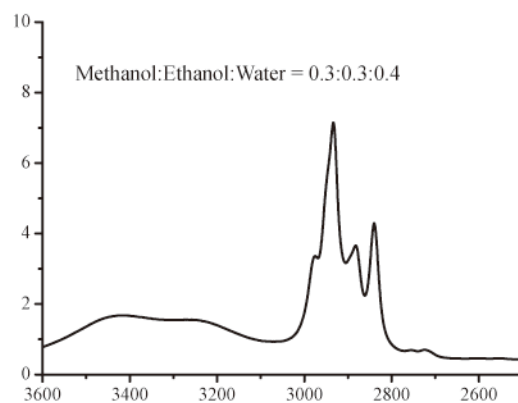
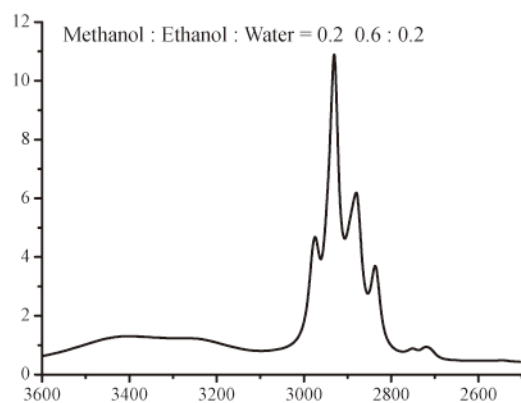
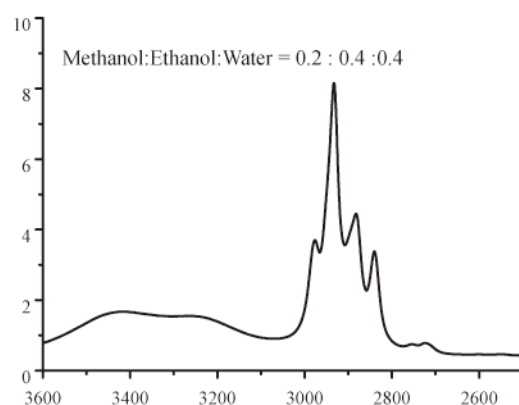
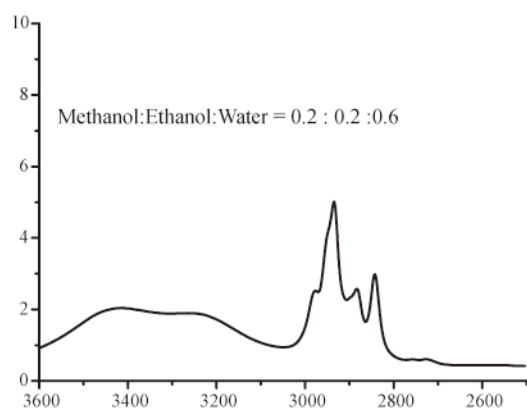


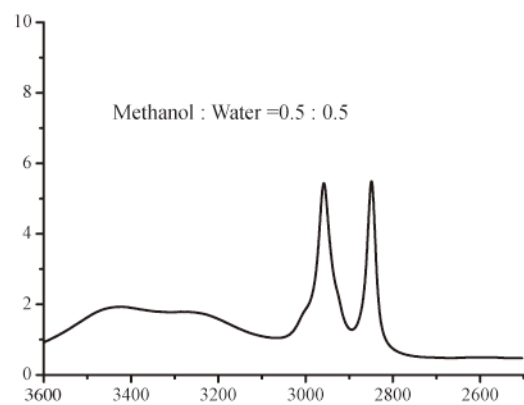
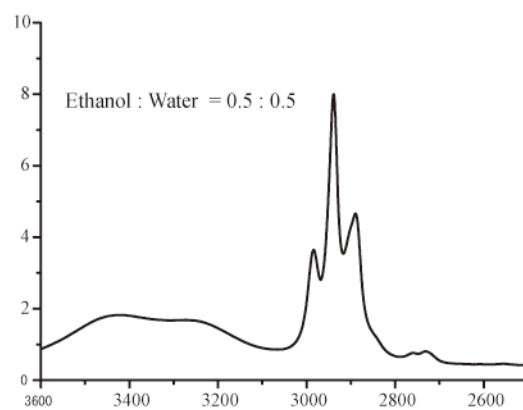
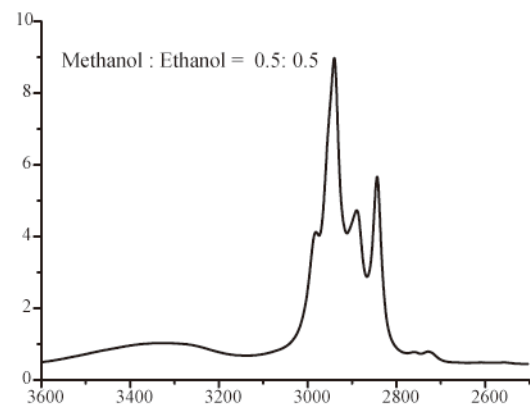
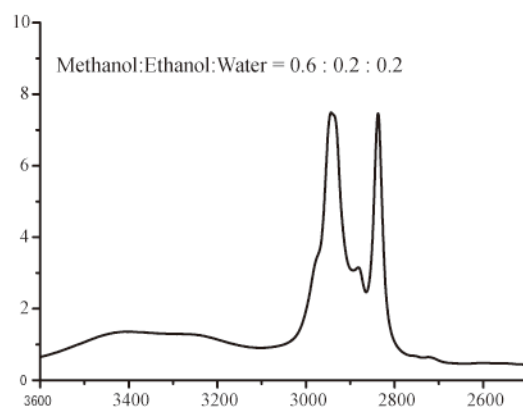
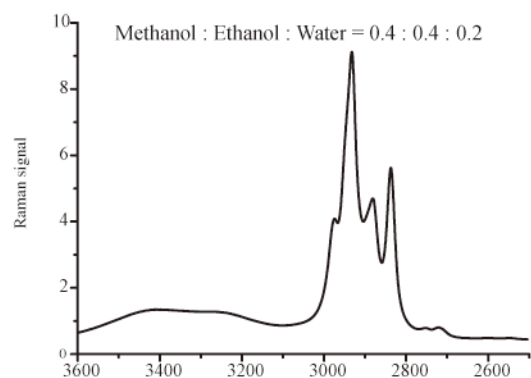
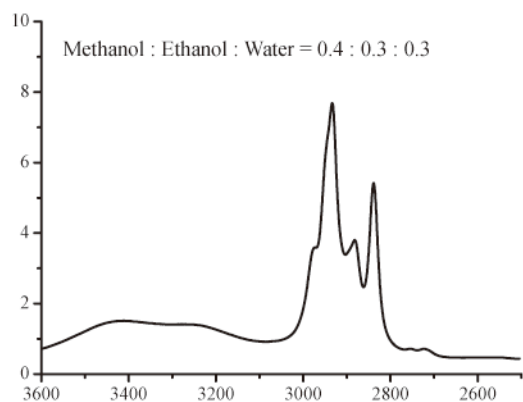
Figure 1S Continued.



Raman shift ( $\text{cm}^{-1}$ )

Raman shift ( $\text{cm}^{-1}$ )

Figure 2S. Raman spectra of ethanol-methanol-water ternary solutions with different mass fractions.



Raman shift (cm<sup>-1</sup>)

Raman shift (cm<sup>-1</sup>)

Figure 2S. Continued.