

Supplemental Figures

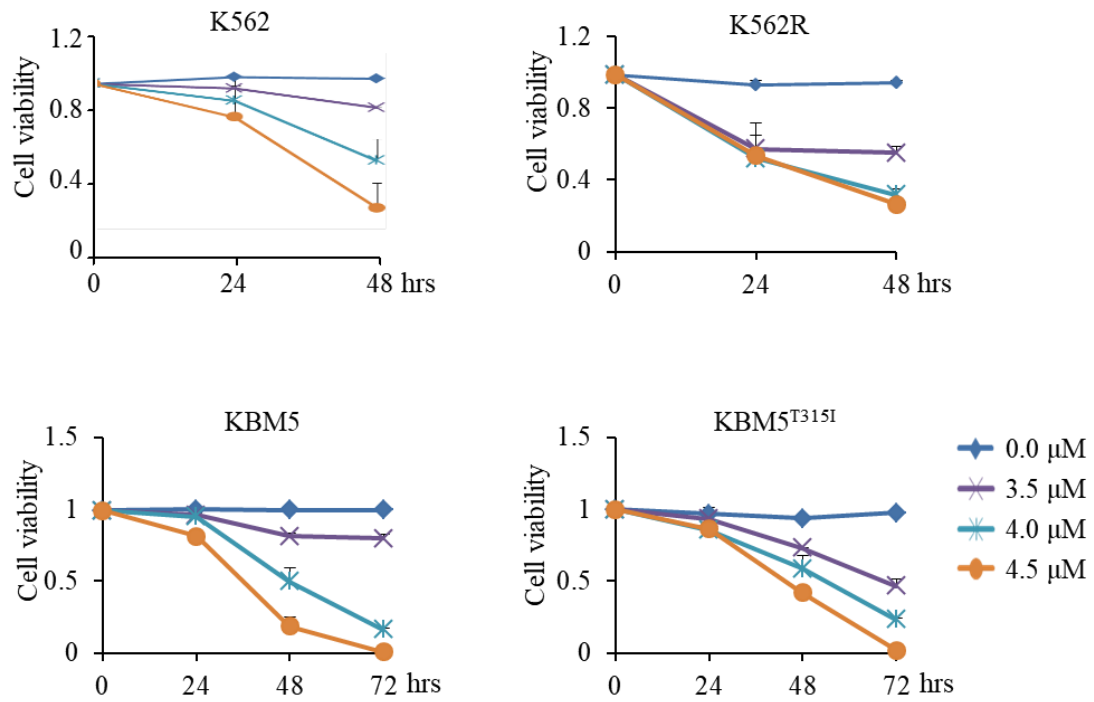


Figure S1 QC reduces cell viability in CML cell lines. CML cell lines were treated with different concentrations of QC at different times and cell viability was measured by the CCK-8 assay.

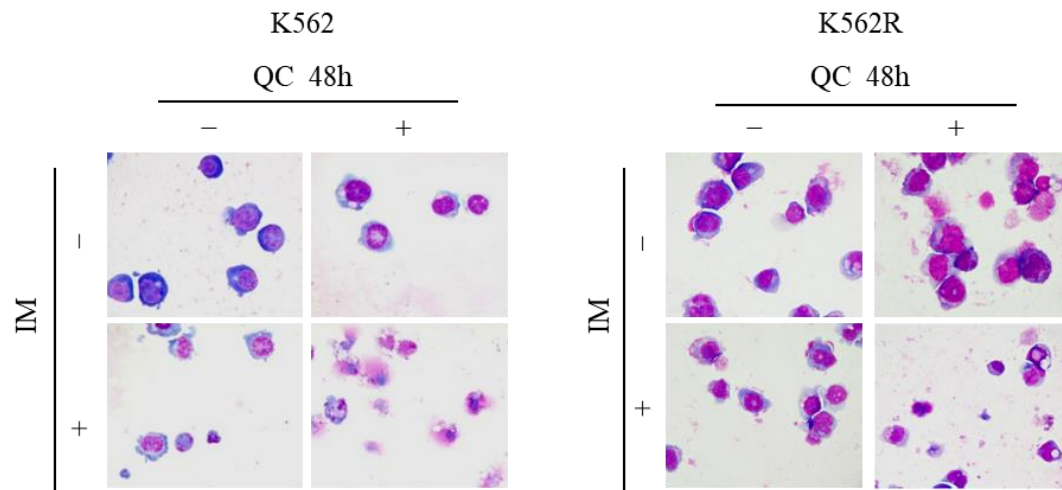


Figure S2 Morphological staining of CML cells after QC and IM treatment. CML cell lines were treated with QC (4 μ M) and IM (0.4 μ M) 48 hours and cell morphology was measured by Giemsa staining. Image magnification: 400 \times .