

## SUPPLEMENTARY APPENDIX

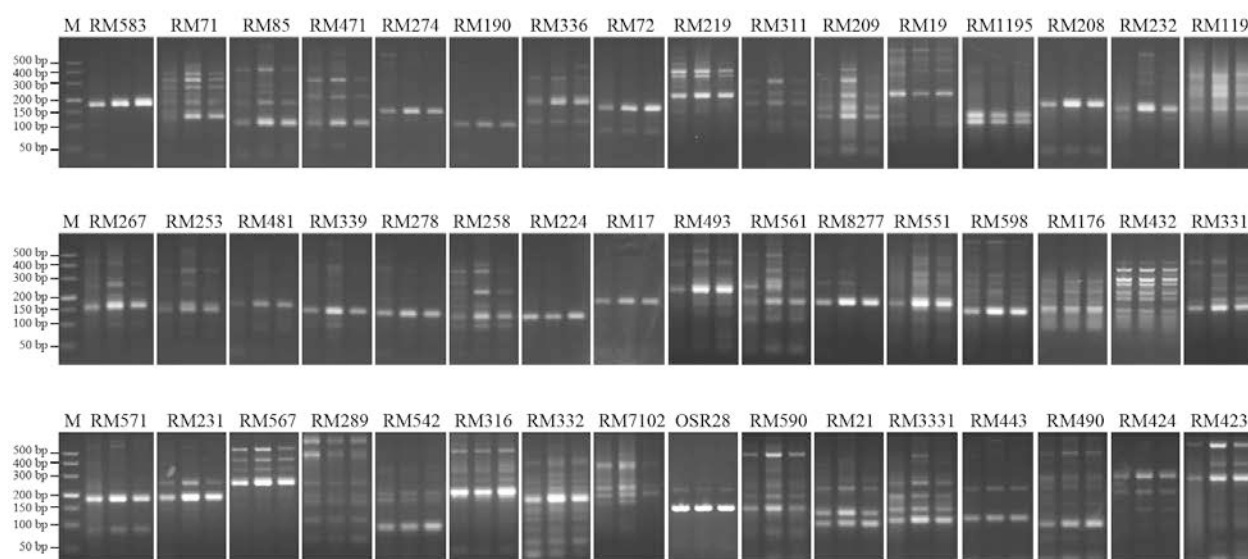
This appendix has been provided by the authors to give readers additional information about their work.

Supplement to:

**Improving blast resistance of the rice restorer line, Hui 316, by introducing *Pi9* or *Pi2* with marker-assisted selection**

Dagang Tian, Xinrui Guo, Zhujian Zhang, Mo Wang and Feng Wang

Biotechnol. Biotechnol. Equip. 2019, **33**



**Supplemental Figure S1** Determination of genome recovery of Hui 316-Pi9 and Hui 316-Pi2 to Hui 316 using 48 fingerprinting markers spanning the whole genome. The marker names are listed above the PCR amplification patterns. For each marker, the loading order is: Hui 316, Hui 316-Pi9 and Hui 316-Pi2 (left to right). M: DNA ladder (DL500, Takara, 3590A).