

Supplementary Materials

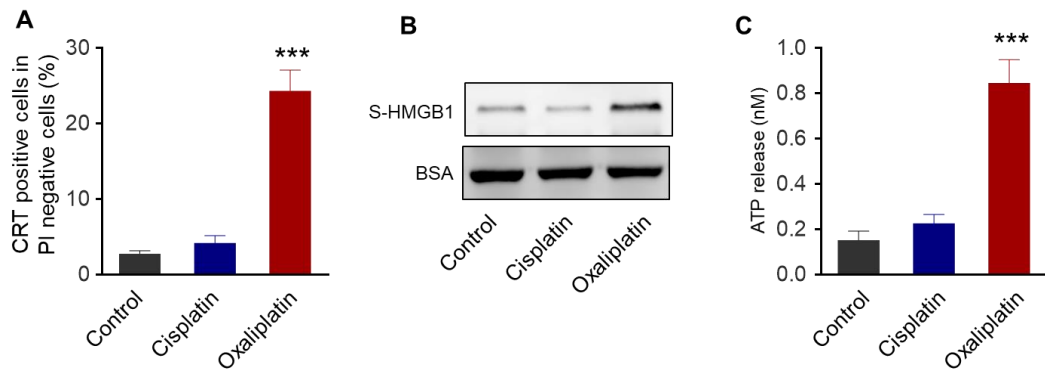


Figure S1. Oxaliplatin induces an ICD response in KLN205 cells. (A) The ratio of CRT positive cells in PI negative cells was quantified based on the results of flow cytometry detection after treated with 20 μ M Cisplatin or Oxaliplatin for 24 h. (B) Released HMGB1 (S-HMGB1) in the PBS, Cisplatin and Oxaliplatin treated KLN205 cells. (C) Amount of released ATP in the PBS, Cisplatin and Oxaliplatin treated KLN205 cells. Data represent means \pm SD. *** $p < 0.001$, one-way ANOVA.