

Appendices

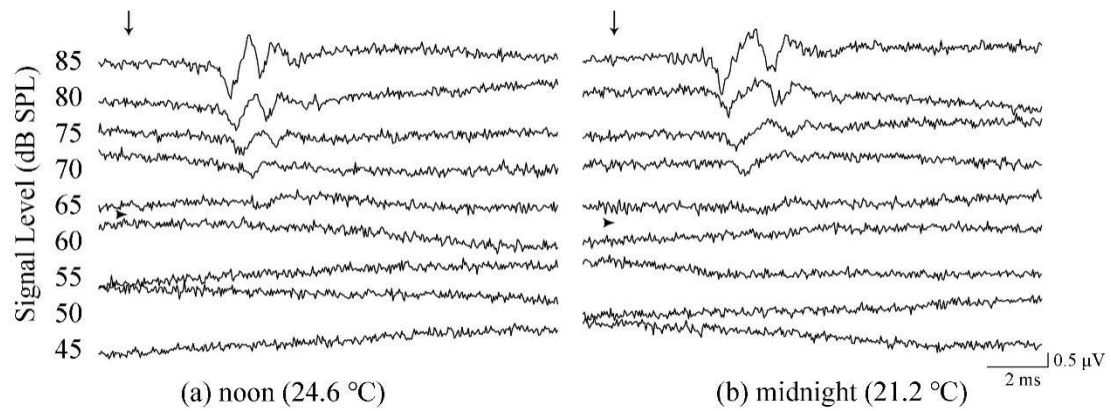


Figure S1. Auditory Brainstem Response (ABR) as a function of stimulus intensity evoked by tone pips of 2.0 kHz at noon (a) and midnight (b) at two similar temperatures obtained from the same frog, both of which exhibit thresholds of 65 dB SPL. The downward-pointing arrows depict the start time of the stimulation. The right-pointing arrowheads depict the visually detected thresholds for each stimulus frequency.

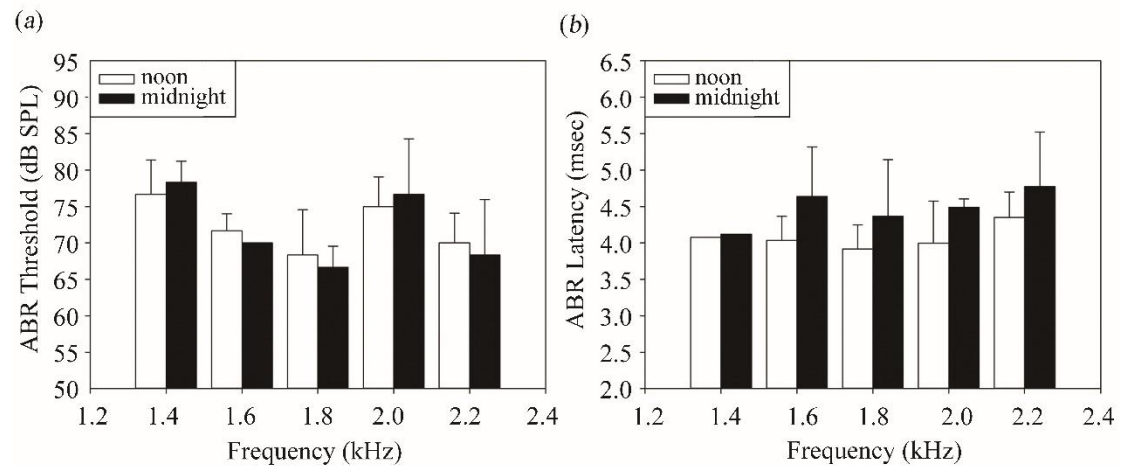


Figure S2. ABR thresholds (a) and ABR latencies (b) of three individuals at similar temperatures at noon ($24.07 \pm 0.61^{\circ}\text{C}$) and midnight ($20.23 \pm 1.19^{\circ}\text{C}$) (mean \pm SD).