

Figure. S1

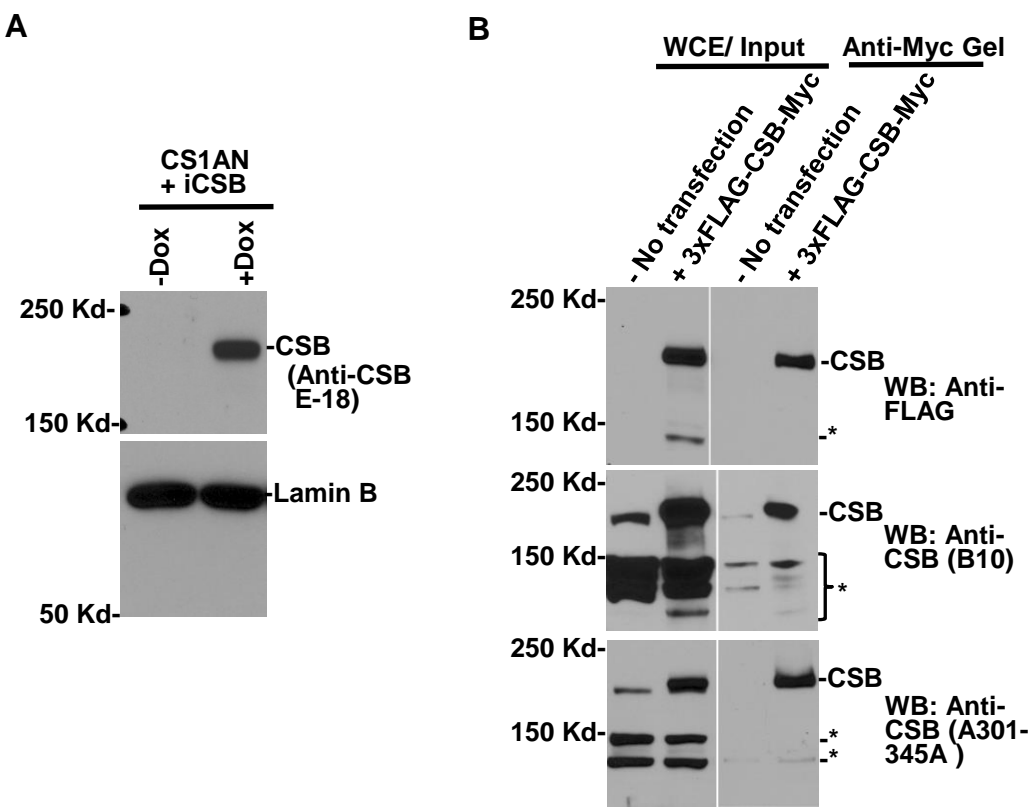


Figure. S1. (A) Whole cell extracts (WCE) from corrected CSB-deficient CS1AN cells with doxycycline (Dox)-inducible CSB expression were Western blotting analyzed using CSB antibody E-18. (B) HeLa cells were transfected with mammalian expression constructs expressing 3xFLAG- and Myc-tagged CSB (3xFLAG-CSB-Myc). The WCE made in RIPA buffer from non-transfected and transfected cells were subjected to immunoprecipitation by anti-Myc gel. The immunoprecipitates were detected with Anti-FLAG, anti-CSB A301-345A, anti-CSB B10 antibodies. The specific CSB bands were showed as annotated while non-specific bands recognized by used antibodies were marked by asterisks (*).