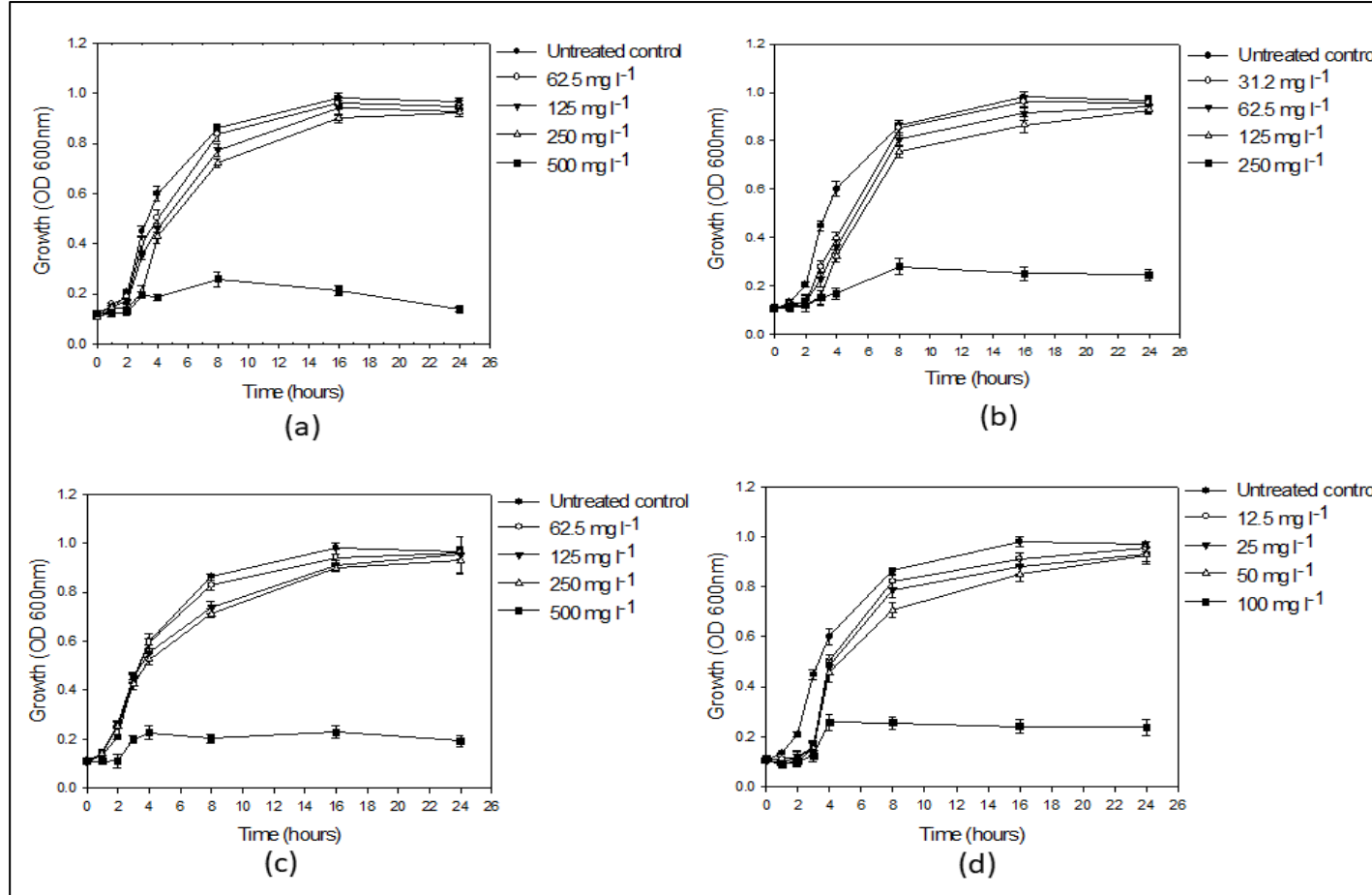
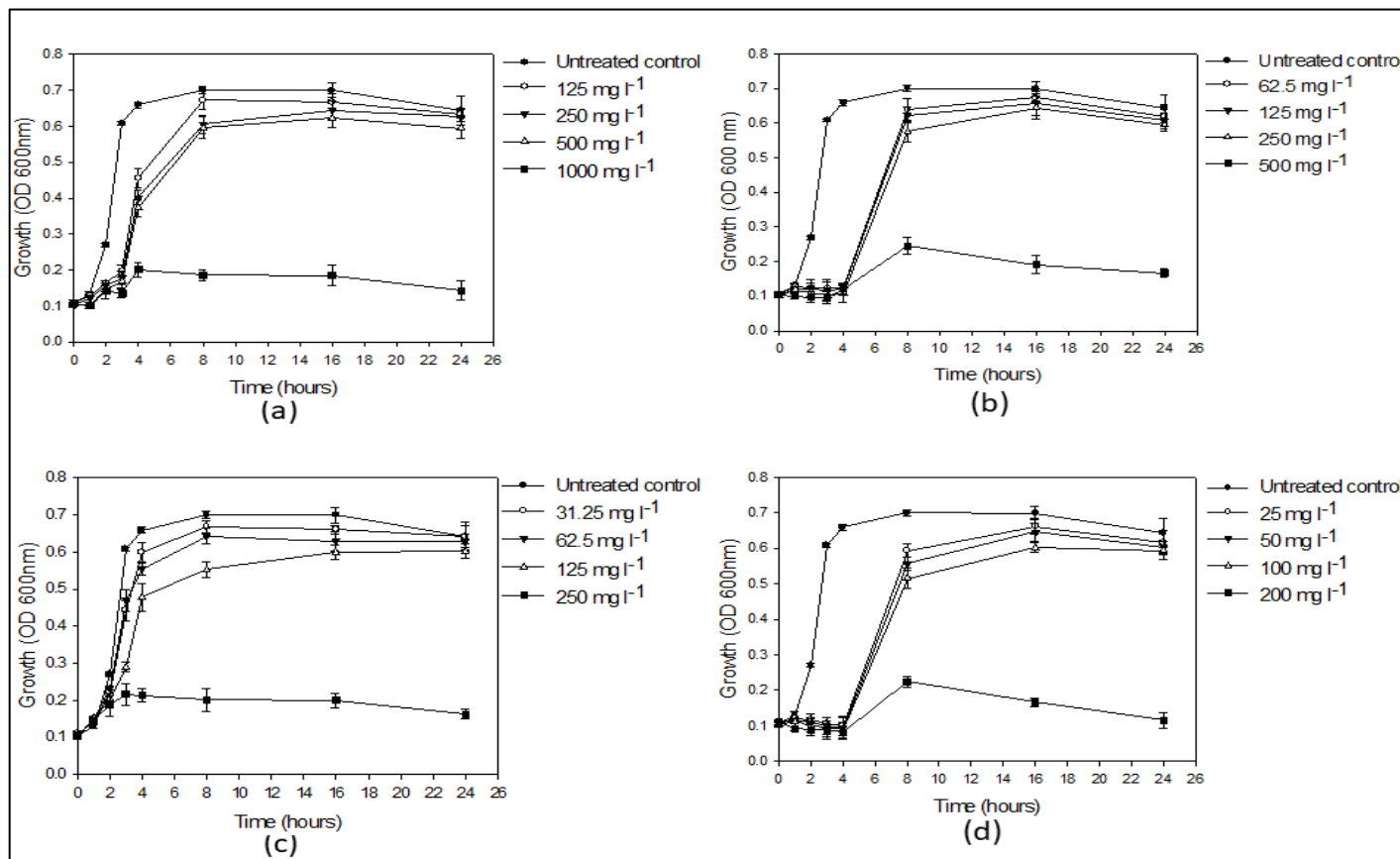


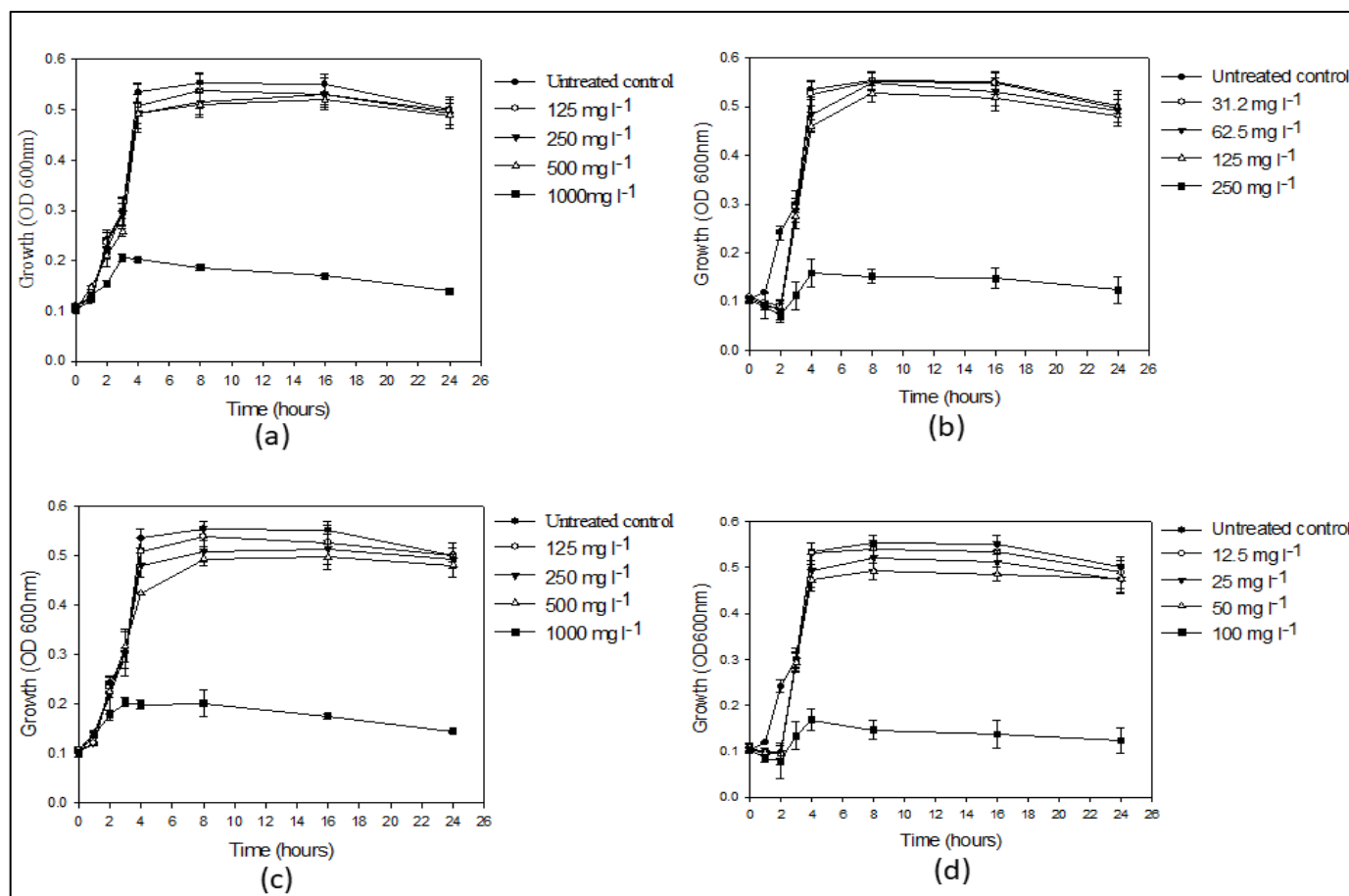
# Supplementary Figure



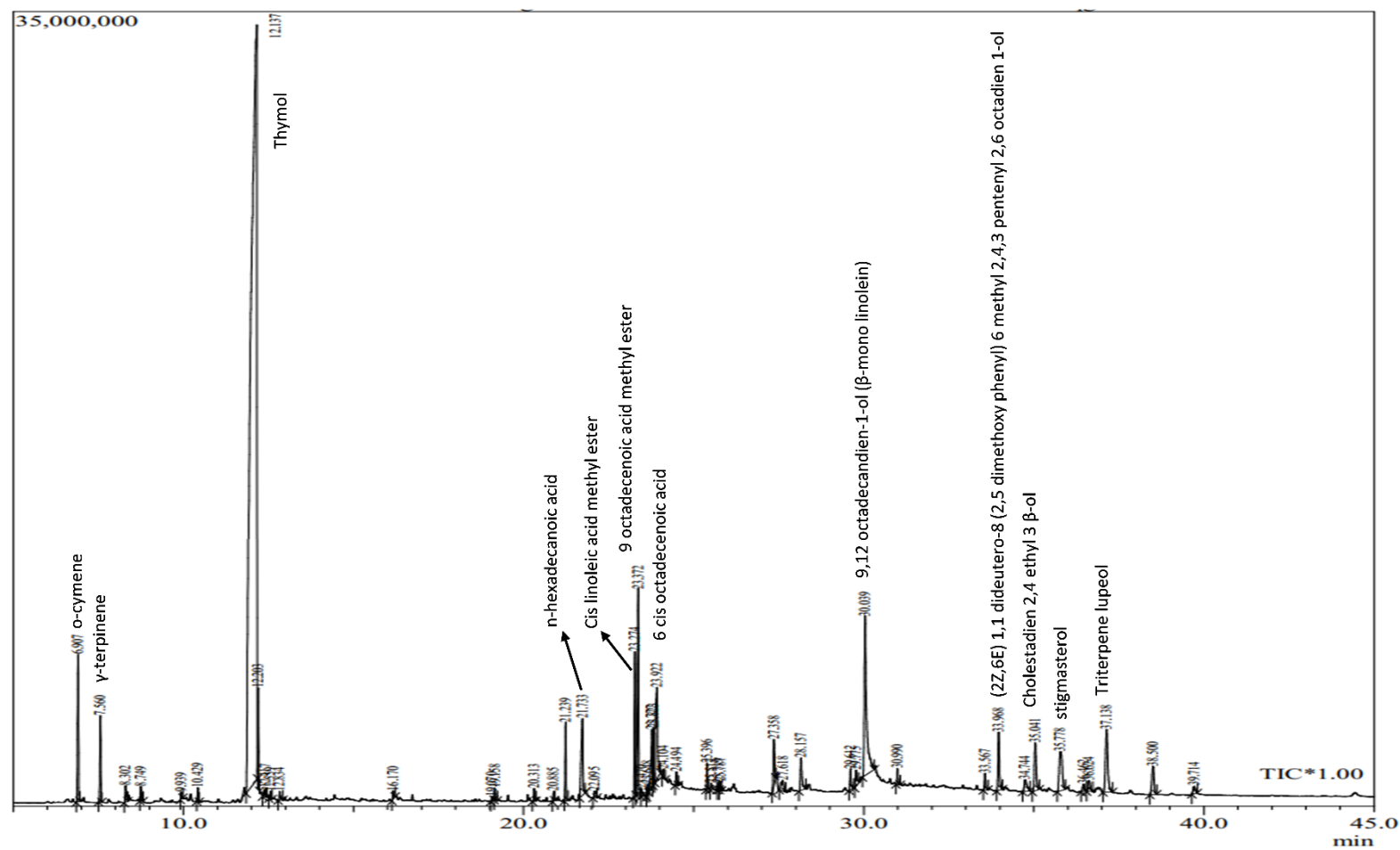
**Supplementary Fig S1.** Growth curves of *K. pneumoniae* KPMA19 in the presence of *C. copiticum* at MIC and sub-MICs. (a) Methanolic extract; (b) Hexane fraction; (c) Ether fraction; (d) Thymol.



**Supplementary Fig S2.** Growth curves of *E. coli* ECM4 in the presence of *C. copiticum* at MIC and sub-MICs. (a) Methanolic extract; (b) Hexane fraction; (c) Ether fraction; (d) Thymol.



**Supplementary Fig S3.** Growth curves of *E. cloacae* ENM36 in the presence of bioactive extracts of *C. copiticum* at MIC and sub-MICs. (a) Methanolic extract; (b) Hexane fraction; (c) Ether fraction; (d) Thymol.



**Supplementary Fig S4.** Gas chromatography–mass spectrometry (GC-MS) chromatogram of methanolic extract of *C. copticum*; Numbers above the peak refer to retention time. The name of compounds corresponding to selected peaks are shown.