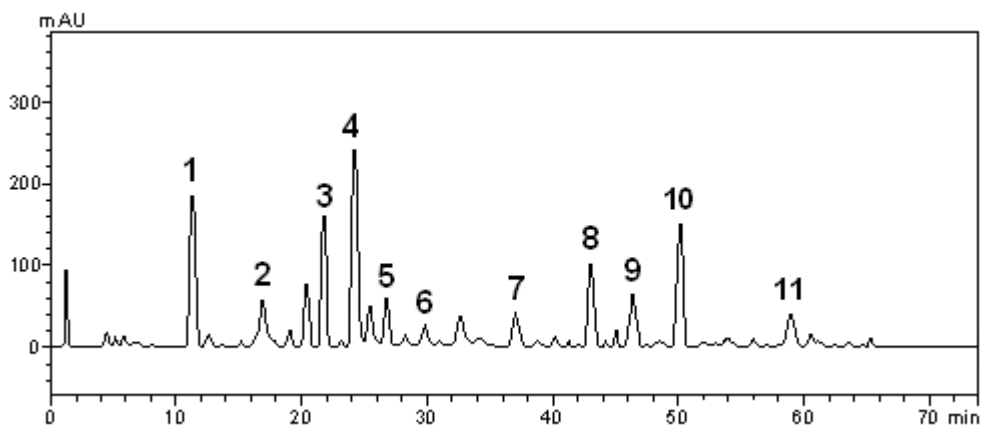


Supplementary Figure 8 – Representative high performance liquid chromatography profile of *Phyllanthus Amarus* extract. Gallic acid (peak 1), catechin (peak 2), chlorogenic acid (peak 3), ellagic acid (peak 4), epicatechin (peak 5), rutin (peak 6), quercitrin (peak 7), isoquercitrin (peak 8), quercetin (peak 9) and kaempferol (peak 10).



Supplemental Figure 9 – Representative high performance liquid chromatography profile of *Momordica charantia* extract. Gallic acid (peak 1), catechin (peak 2), chlorogenic acid (peak 3), caffeic acid (peak 4), ellagic acid (peak 5), epicatechin (peak 6), rutin (peak 7), quercitrin (peak 8), isoquercitrin (peak 9), quercetin (peak 10) and kaempferol (peak 11).