

SUPPLEMENTARY MATERIALS

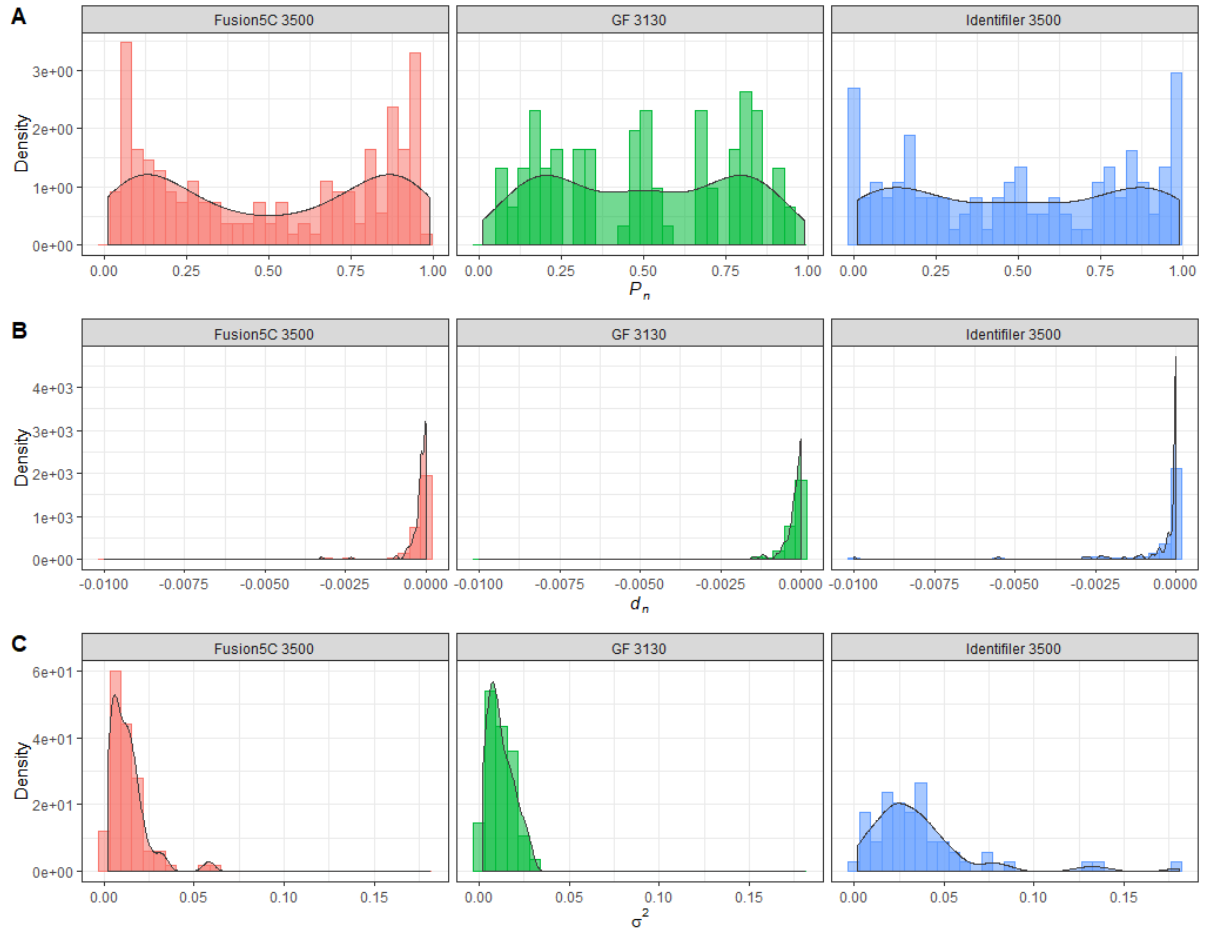


Figure S1: Density plots and density histogram of the optimised values, P_n (A), d_n (B), and σ^2 (C), for each kit, PowerPlex® Fusion (Red), GlobalFiler™ (Green), and Identifiler™ (Blue).

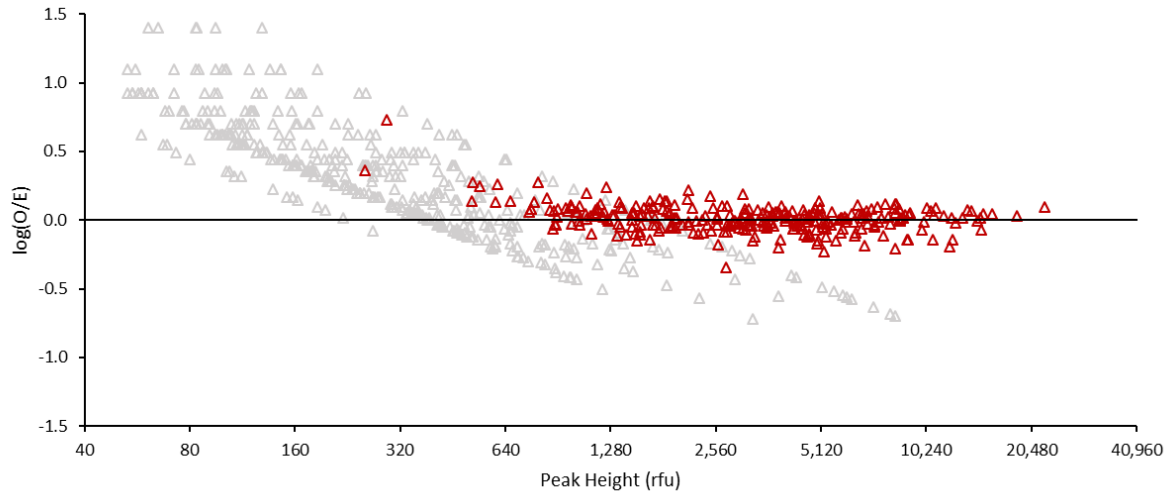


Figure S2: Plot of $\log\left(\frac{O}{S}\right)$ versus allelic peak height for Identifiler™ profiles analysed using an ABI 3500 genetic analyser where missing stutter data were imputed by sampling from $U[0,50]$. Observed back stutter peaks are designated using a red triangle, and imputed back stutter peaks are designated using a grey triangle.

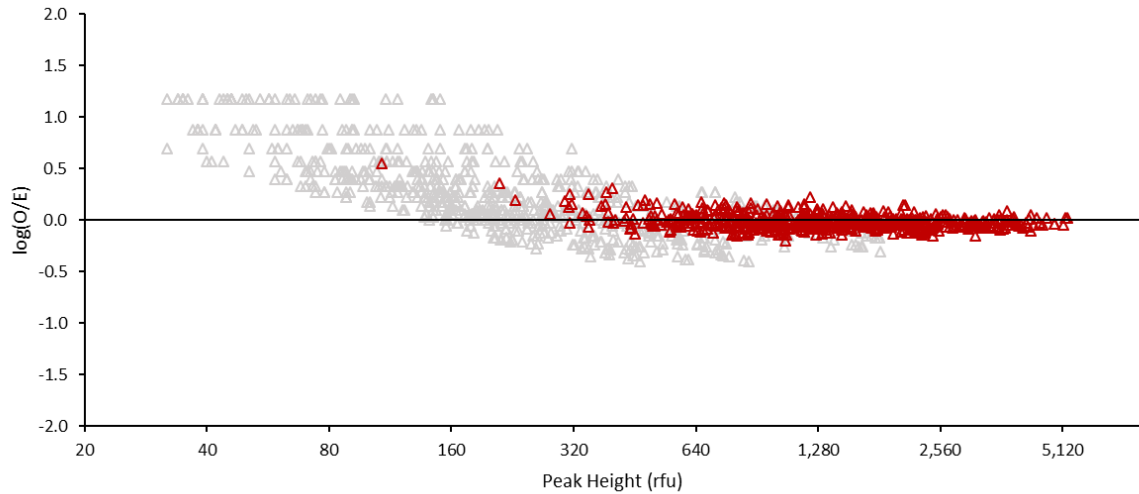


Figure S3: Plot of $\log\left(\frac{O}{S}\right)$ versus allelic peak height for GlobalFiler™ profiles analysed using an ABI 3130 genetic analyser where missing stutter data were imputed by sampling from $U[0,30]$. Observed back stutter peaks are designated using a red triangle, and imputed back stutter peaks are designated using a grey triangle.

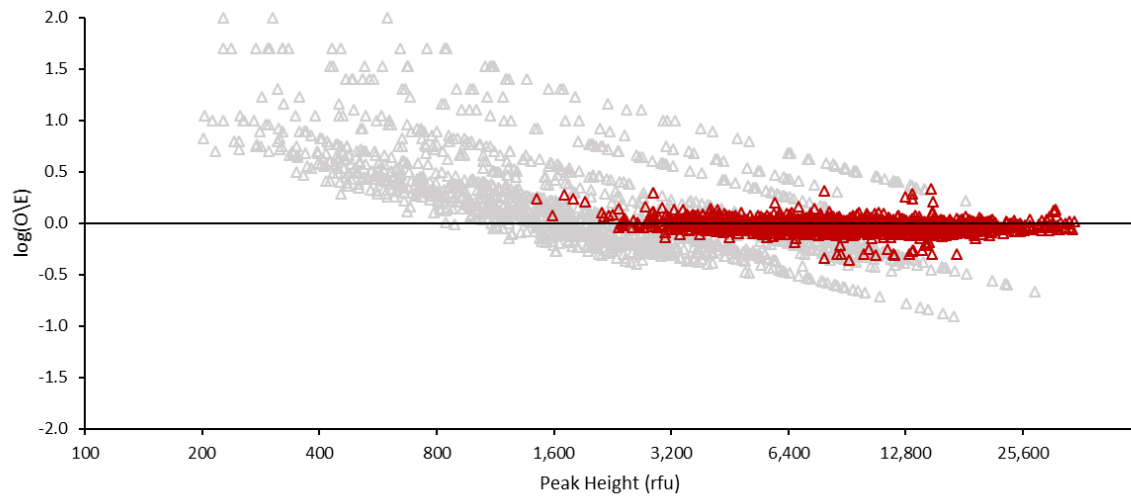


Figure S4: Plot of $\log\left(\frac{O}{E}\right)$ versus allelic peak height for PowerPlex® Fusion profiles analysed using an ABI 3500 genetic analyser where missing stutter data were imputed by sampling from $U[0,200]$. Observed back stutter peaks are designated using a red triangle, and imputed back stutter peaks are designated using a grey triangle.