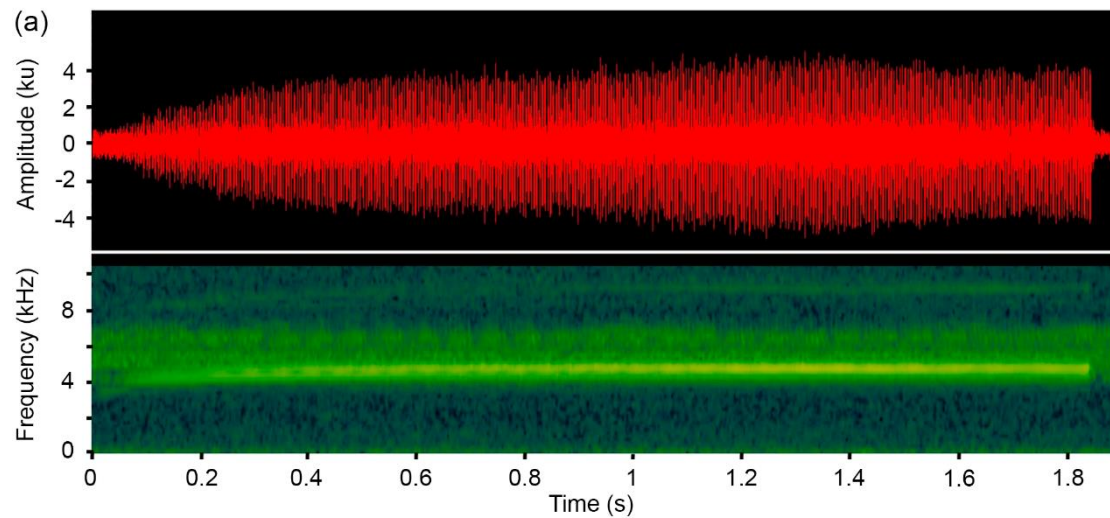
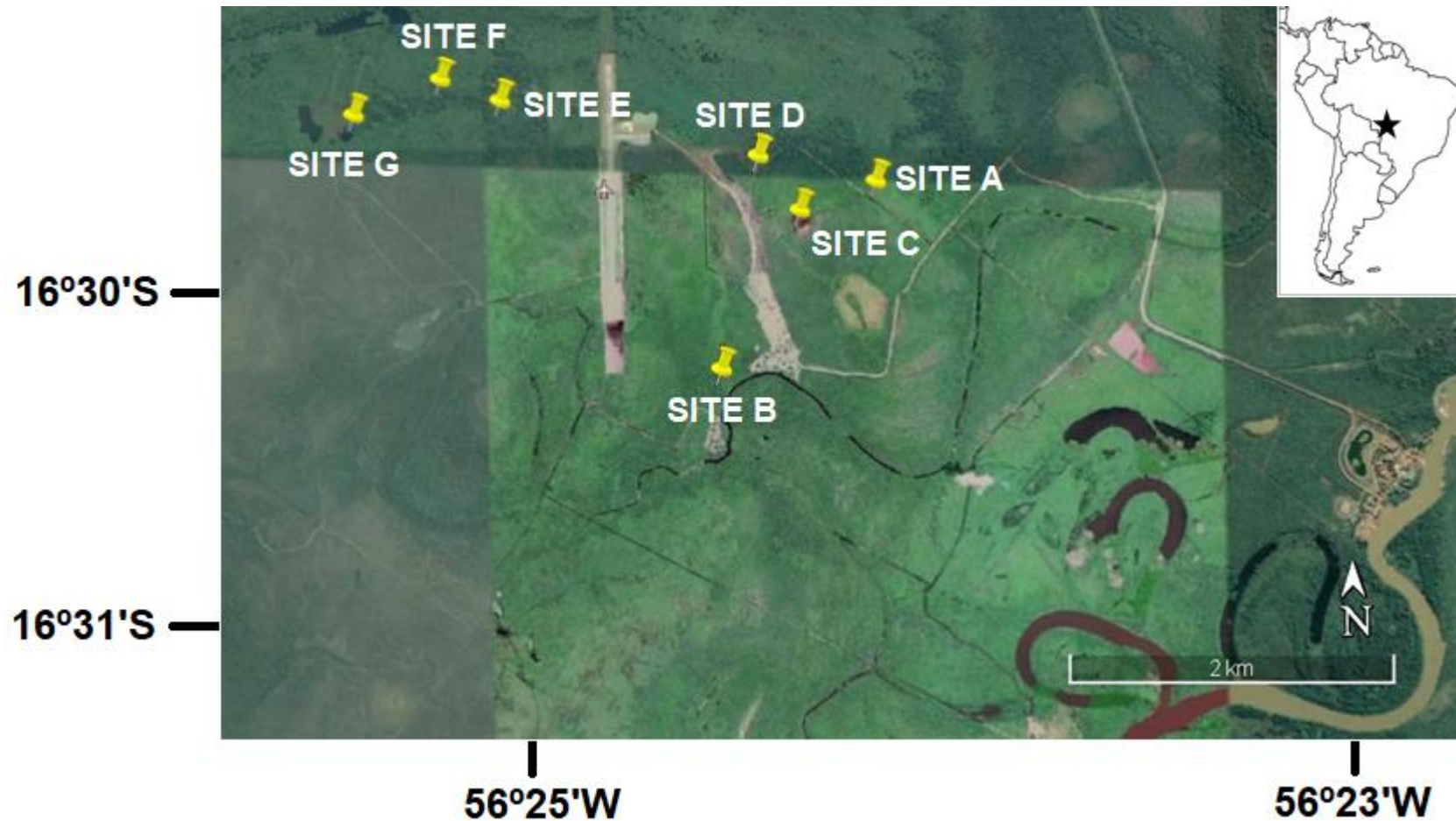


Online Resource 1: Viewer image shows the oscillogram (Amplitude, ku) and audiospectrogram (Frequency range, kHz) (a) of a typical call from *Elachistocleis matogrosso* (b). The call was recorded in the Pantanal Matogrossense, Brazil, by a Song Meter SM2 on 23 November 2013. Photo: T. F. Dorado-Rodrigues



Online Resource 2: Locations of the seven monitored sites (yellow pins) in the SESC Pantanal, Mato Grosso, Brazil. The inset shows the location of the study area (star) in Brazil. The Cuiabá River is shown in the lower right corner of the image. Image was extracted from Google Earth, 3<sup>rd</sup> February 2019 (wet season). Scale bar: 1 km



Online Resource 3: Monthly detections of *Elachistocleis matogrosso* at seven monitored sites around the SESC Pantanal, Mato Grosso, Brazil

Recording site <sup>a</sup>	January	February	March	April	May	June	July	August	September	October	November	December
A	X	X								X	X	X
B	X	X										
C	X	X	X	X	X							
D	X	X	X	X	X							
E	X	X	X	X								X
F	X	X	X	X								
G	X	X	X	X								X

<sup>a</sup>Site A was monitored from 15 November 2013 to 14 November 2014; Sites B-G were monitored from 8 June 2015 to 2 June 2016