

SUPPLEMENTARY APPENDIX

This appendix has been provided by the authors to give readers additional information about their work.

Supplement to:

Determination of residual monomer content in dental acrylic polymers and effect after tissues implantation

Milena Kostić, Jelena Stanojević, Ana Tačić, Nikola Gligorijević, Ljubiša Nikolić, Vesna Nikolić, Marko Igić and Marija Bradić Vasić

Biotechnol. Biotechnol. Equip. 2020, **34**

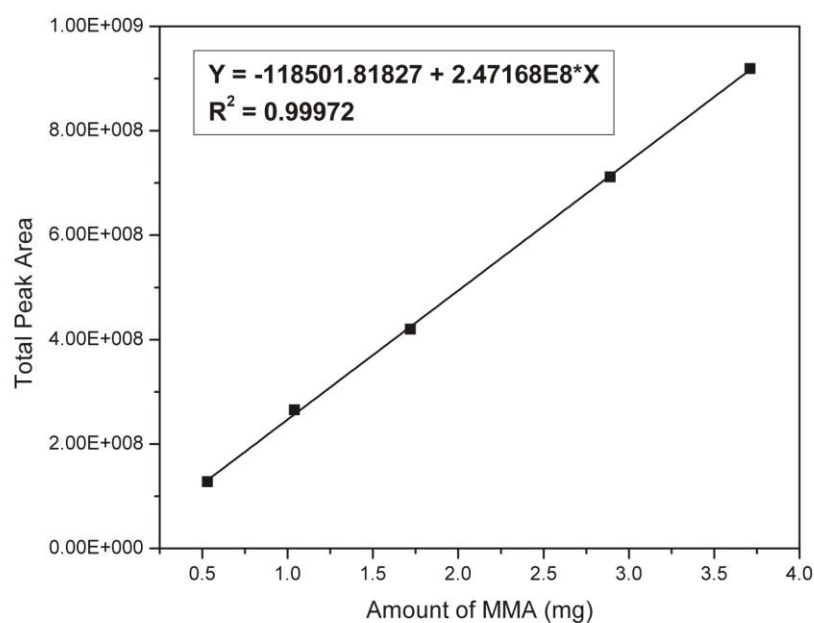


Figure S1 Calibration curve of MMA obtained by MHE-GC-MS and GC-FID analysis.

Note: The calibration curve represents the dependence of total peak area for ten successive extractions on MMA mass.