

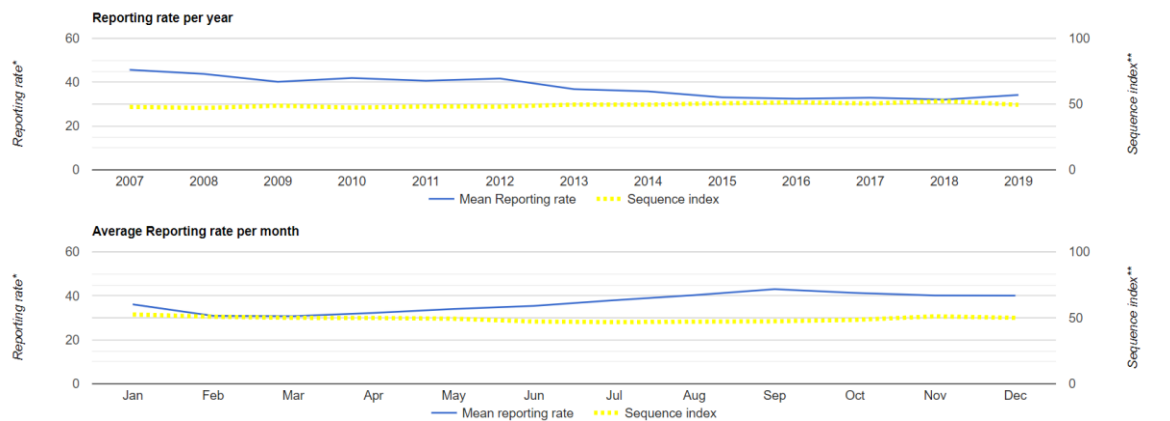
SUPPLEMENTARY INFORMATION

African Zoology 2020: 1-6

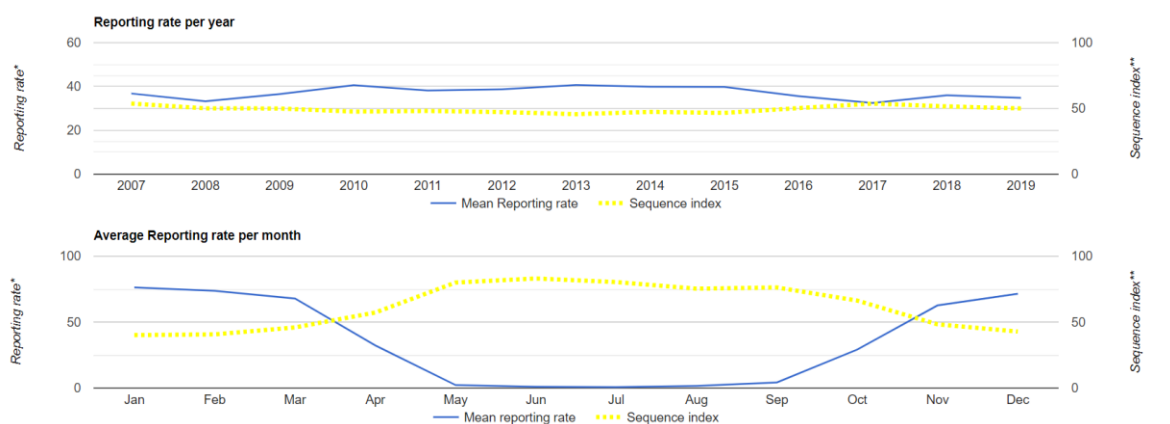
BirdLasser: The influence of a mobile app on a citizen science project

Alan TK Lee and Henk Nel

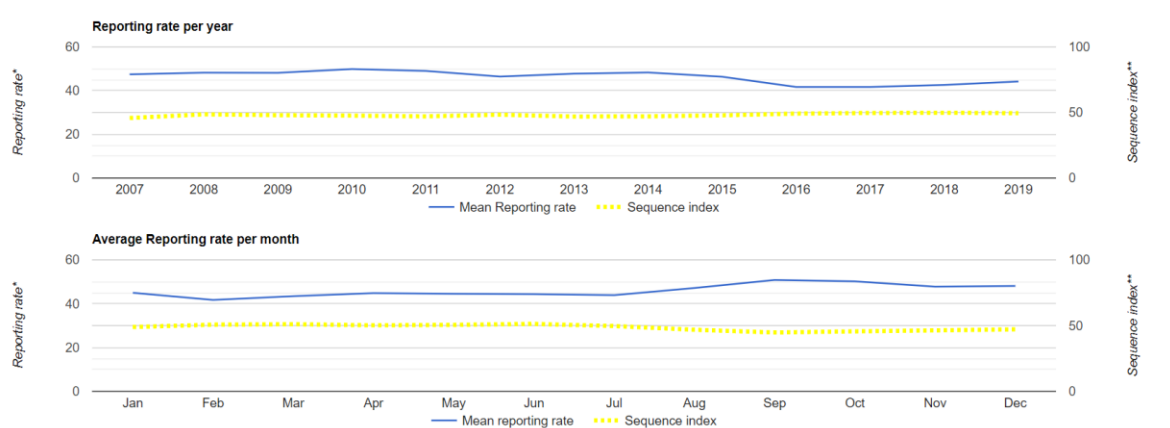
This supplementary information document presents screenshots from the sabap2.adu.org website of trends in reporting rate and sequence index (measures of abundance) by year and month for five example species. Screenshots were taken from webpage <http://sabap2.adu.org.za/species/733#pgcontent>; where in this case 733 is the species number for European Starling. All screenshots were taken 9 December 2019. This set of species illustrate the small, but significant declines in reporting rate with time, or stable trends for species where population increase is suspected (Pied Crow). In all cases, there is no change in the sequence index. Studies that wish to identify ecological correlates of abundance and population trends are encouraged to recognise that the data submission pathway (in the case the use of BirdLasser) may be an additional confounding factor that will need to be considered.



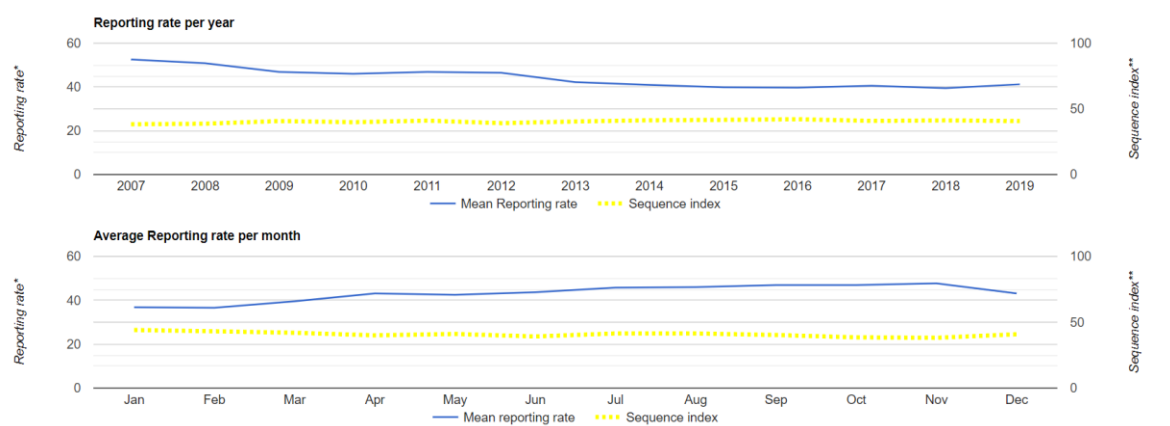
Cape Weaver



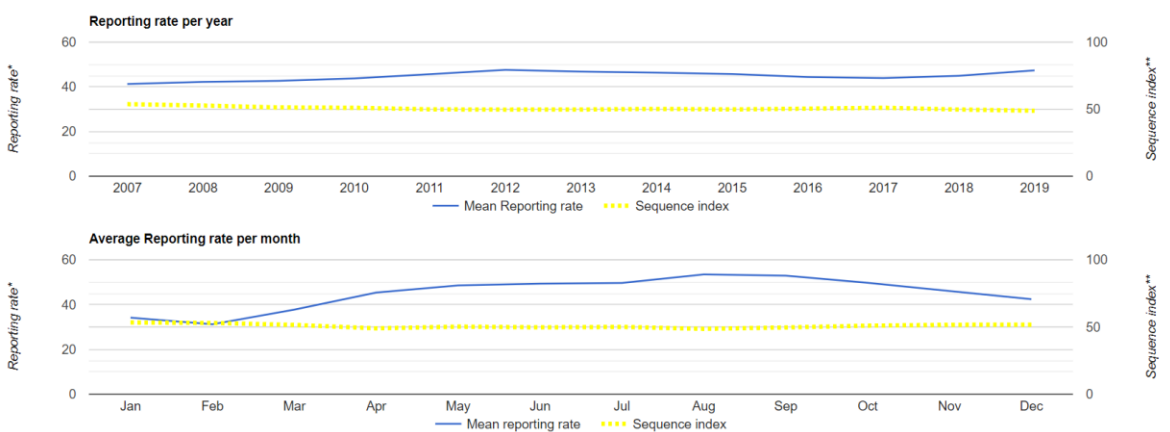
European Swallow



Southern Boubou



European Starling



Pied Crow