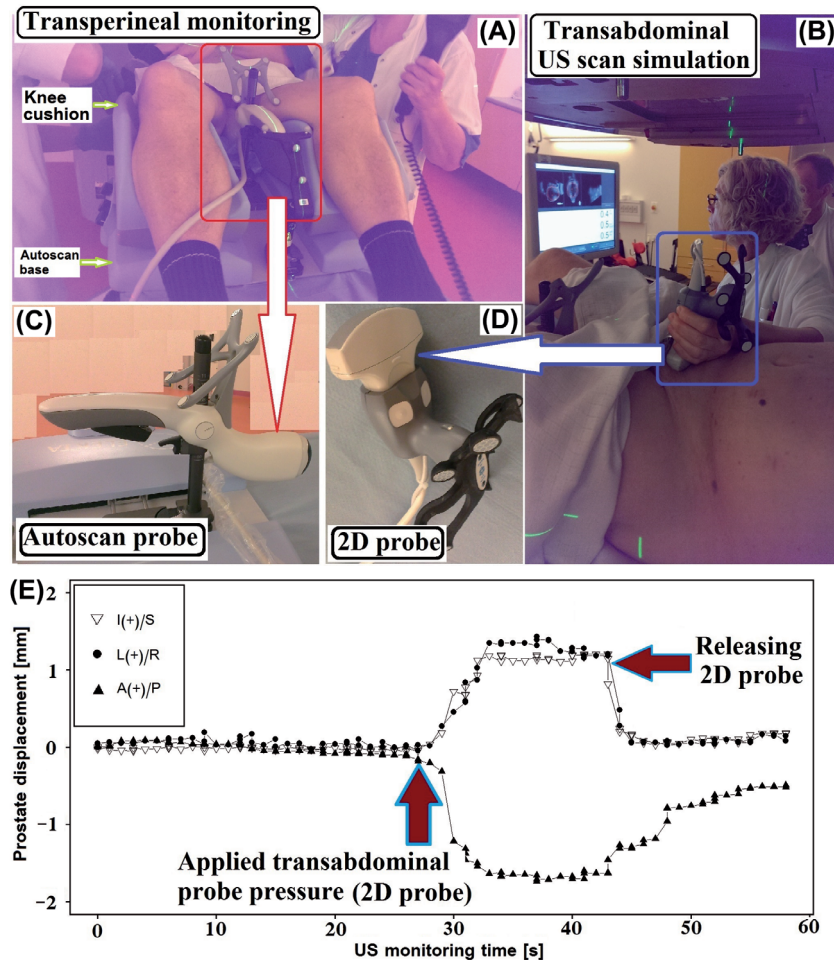
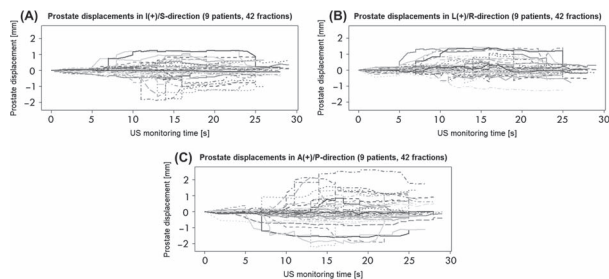


Supplementary material for Baker M and Behrens CF, Prostate displacement during transabdominal ultrasound image-guided radiotherapy assessed by real-time four-dimensional transperineal monitoring, *Acta Oncol*, 2015;54: 1508–1514.



Supplementary Figure 1. Clarity Ultrasound system; (A) The autocan attached to a patient, (B) Transabdominal ultrasound simulation using the 2D probe, (C) The autocan probe, (D) The 2D probe, (E) The prostate monitoring curve, indicating the impact of applied TAUS probe pressure.



Supplementary Figure 2. Prostate displacement; (A–C) Monitoring graphs show the prostate displacement due to applied probe pressure for total 42 US scans in I/S, L/R, and A/P directions.