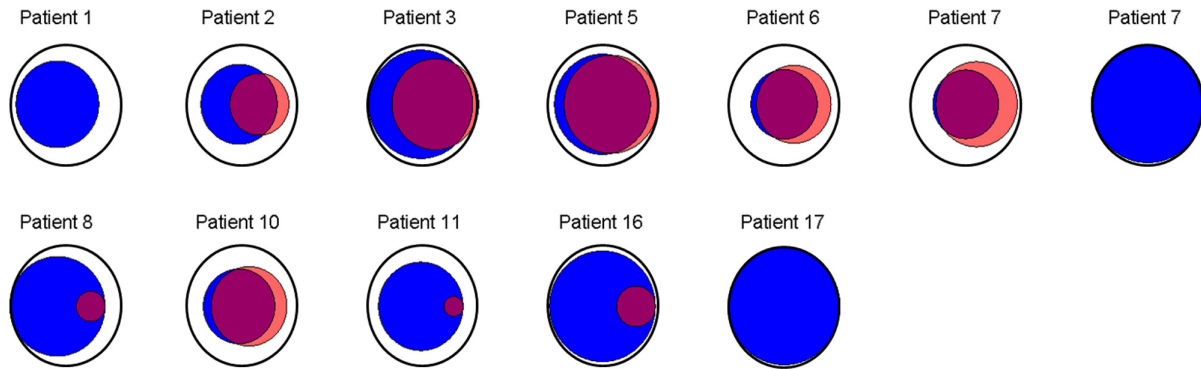
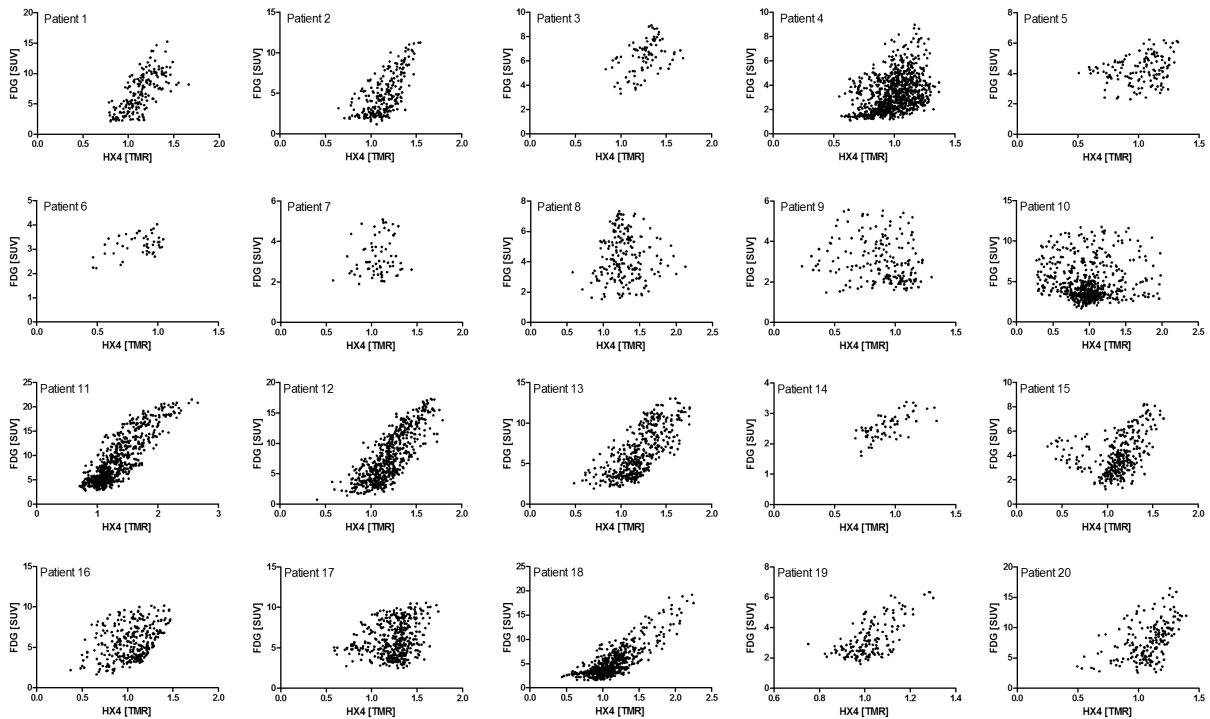


Supplementary information for Zegers et al., Imaging of tumour hypoxia and metabolism in patients with head and neck squamous cell carcinoma, Acta Oncol, 2015; doi:10.3109/0284186X.2015.1062913



Supplementary Figure 1. Visual representation of the overlap of $[^{18}\text{F}]\text{FDG}$ high fraction (blue) and $[^{18}\text{F}]\text{HX4}$ high fraction (red) for the metastatic lymph nodes (black) of all patients.



Supplementary Figure 2. Voxel wise comparison of the $[^{18}\text{F}]\text{HX4}$ (tumour-muscle ratio) and $[^{18}\text{F}]\text{FDG}$ PET (SUV) uptake within the primary lesions.