

Appendix A



Figure A1: Occupant kinematics with and without buckle pretensioning in 40.2 km/h (25 mph) rear sled tests.

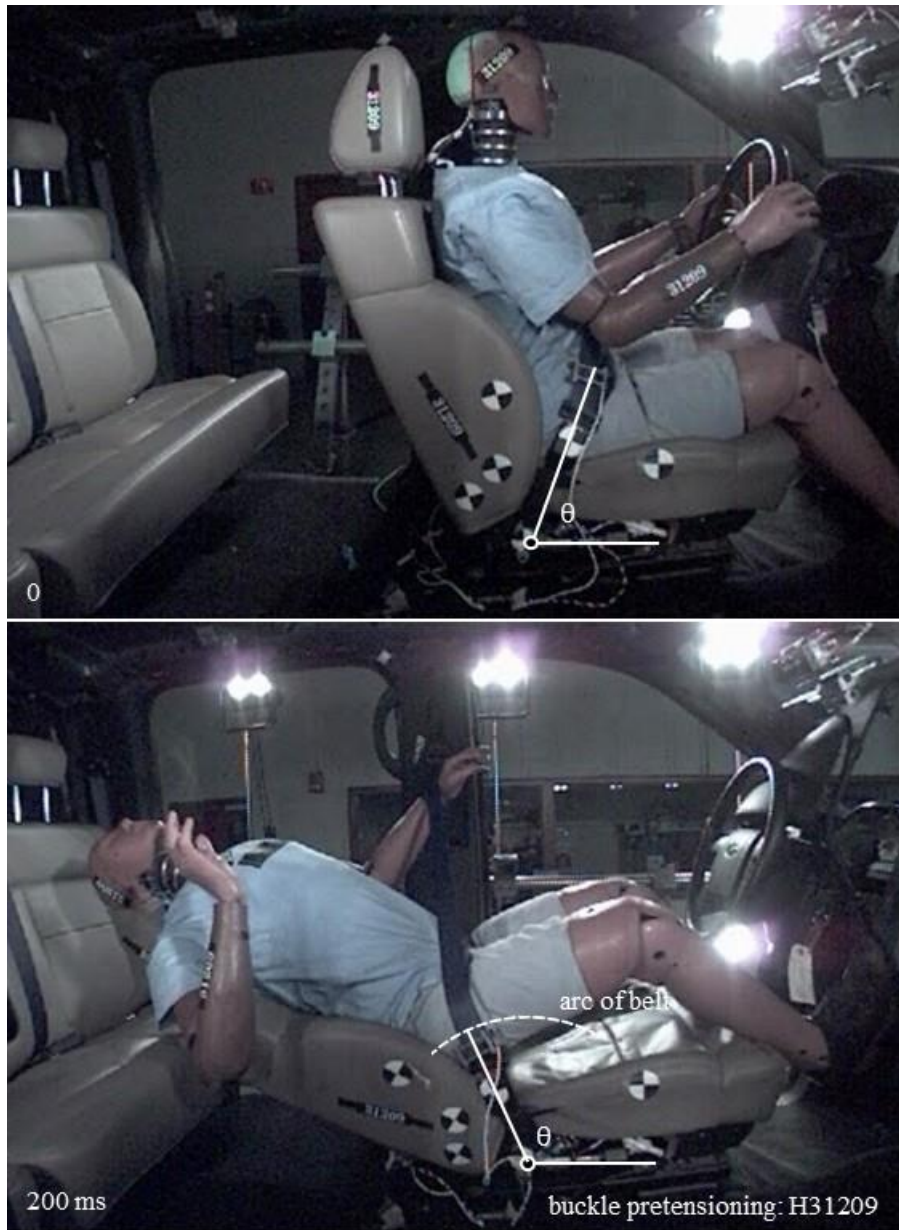


Figure A2: Kinematics at 0 and 200 ms in test H31209 with buckle pretensioning.

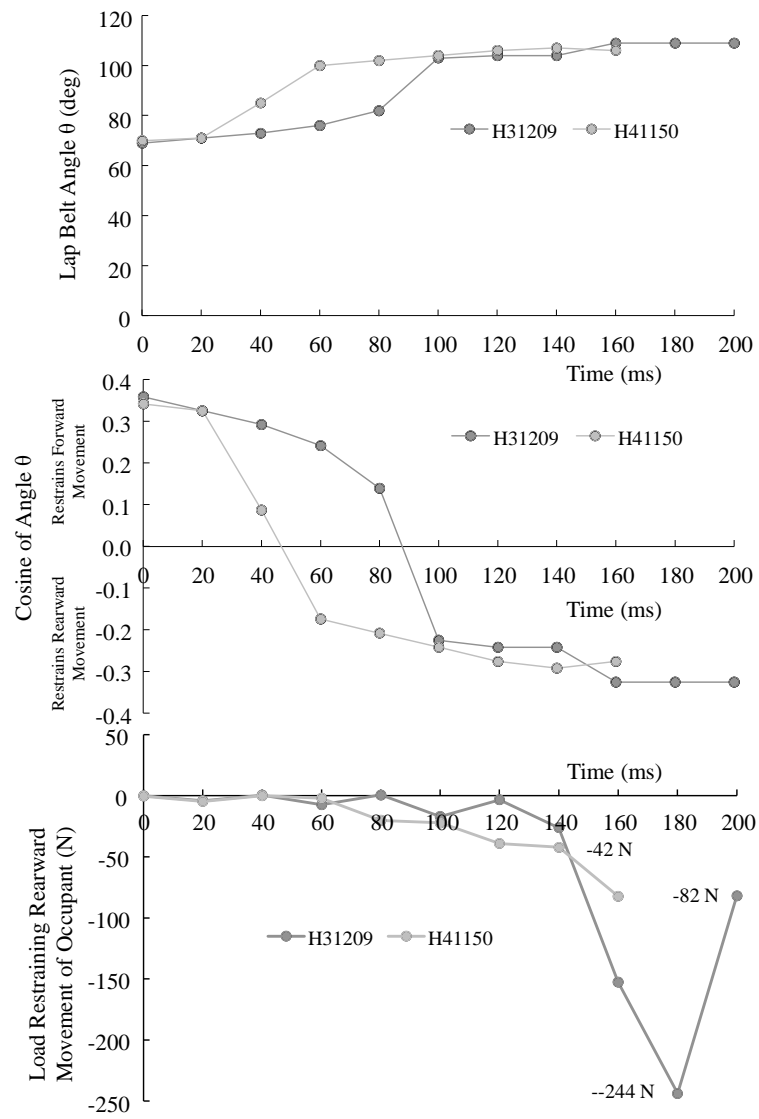


Figure A3: Lap belt angle, cosine of the angle and lap-belt load in the horizontal direction in H31209 and H41150.

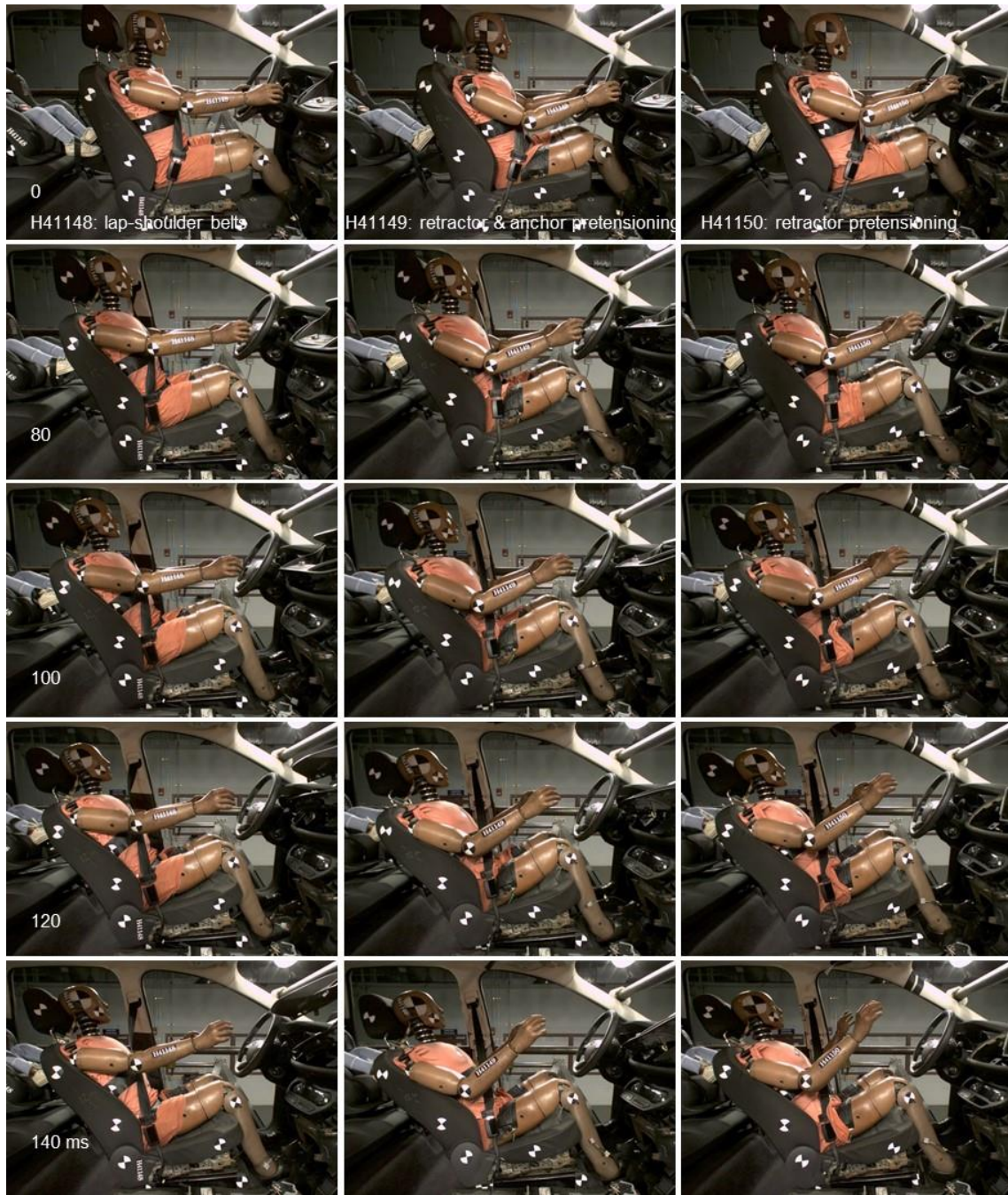


Figure A4: Occupant kinematics in matched tests with and without retractor and retractor and anchor pretensioning in 40.2 km/h (25 mph) rear sled tests.

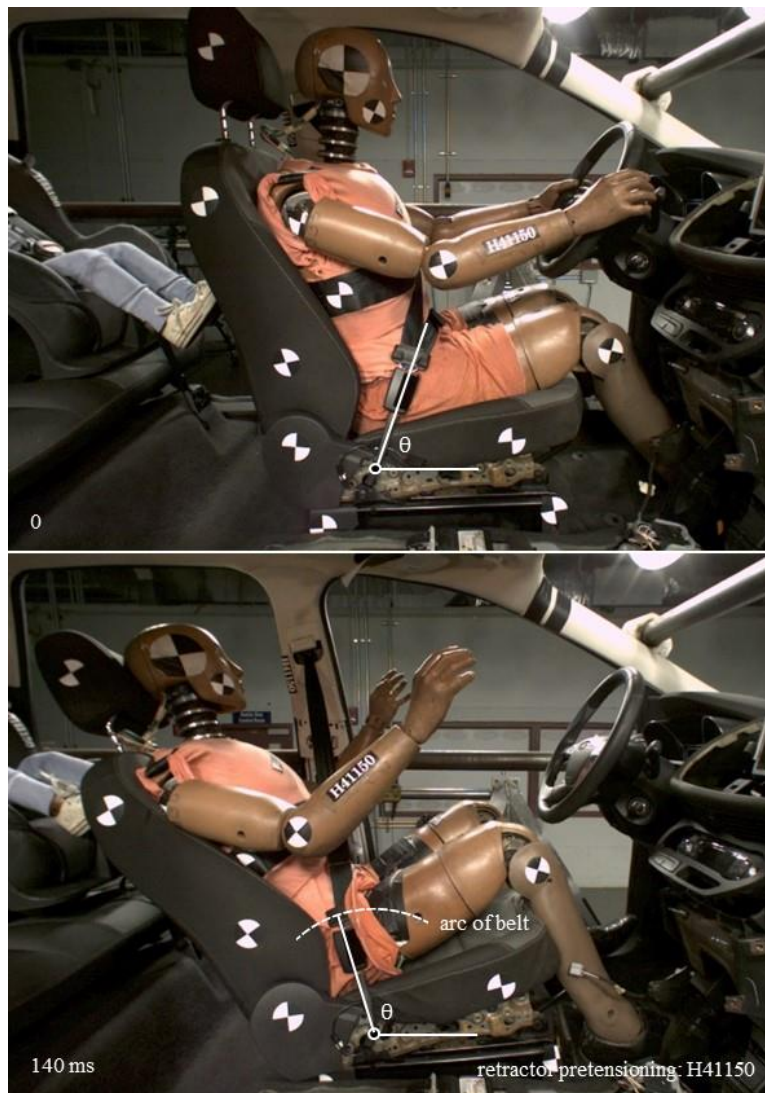


Figure A5: Kinematics at 0 and 150 ms in test H41150 with retractor pretensioning.