

Supplementary material for Liu et al., “The combination of linagliptin and metformin rescues bone loss in type 2 diabetic osteoporosis”,
Journal of Drug Targeting, 2023

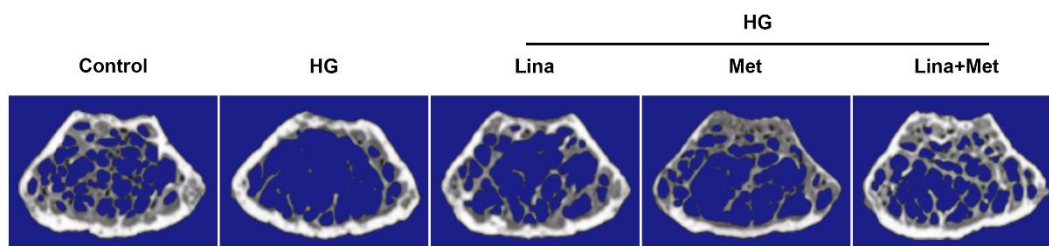


Figure S1. Representative bone micro-architecture images of femurs in type 2 diabetic osteoporosis rats with the treatment of linagliptin and metformin.

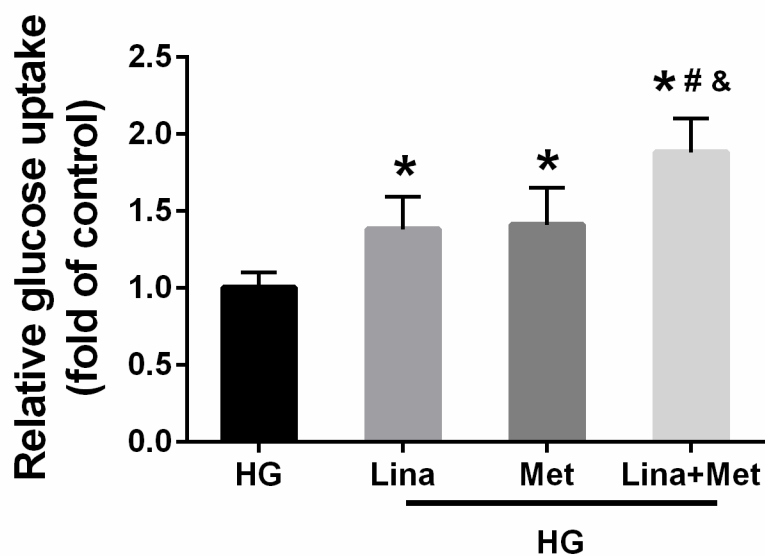


Figure S2. Linagliptin and metformin promoted glucose uptake of MC3T3-E1. Data was shown as mean \pm SD, $n=3$. * $P < 0.05$ vs. HG treatment, # $P < 0.05$ vs. Lina group, & $P < 0.05$ vs. Met group.